

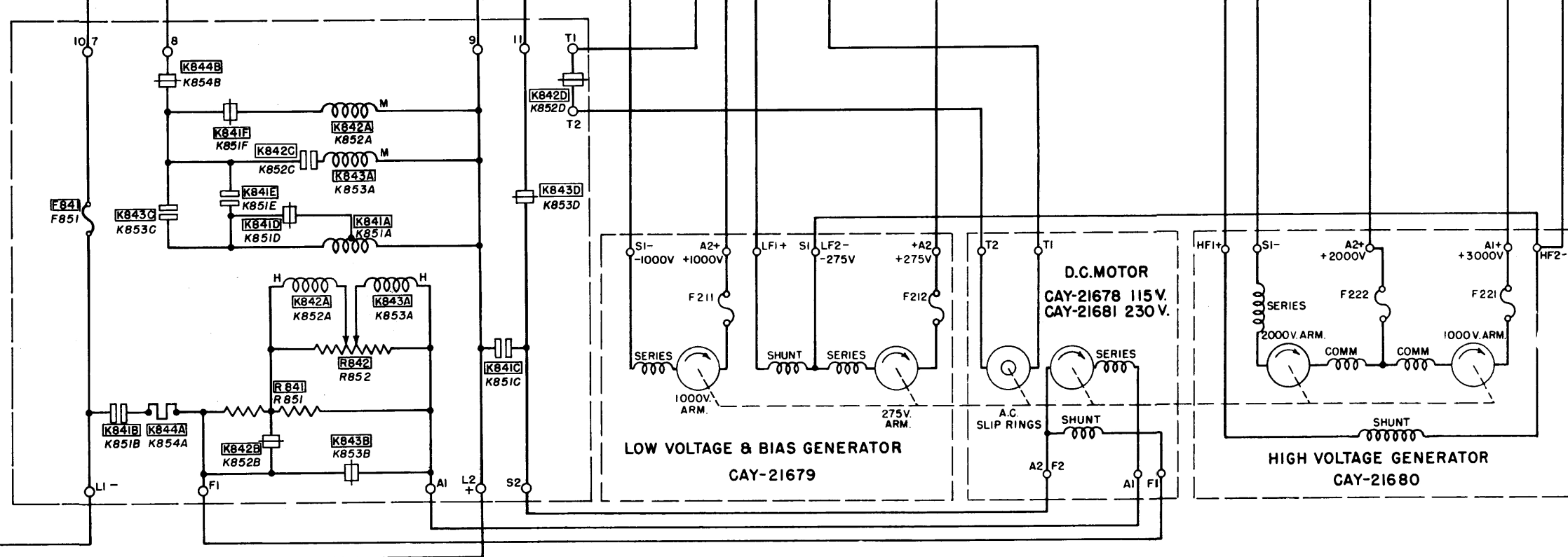
TRANSMITTER  
CAY-52217 115V. D.C.  
CAY-52218 230V. D.C.

CONNECTION TABLE

BEFORE INITIAL OPERATION ADJUST THE FOLLOWING CIRCUITS AS INDICATED IN THIS TABLE FOR PARTICULAR TYPE OF POWER SUPPLY AND CONTROL CIRCUITS.

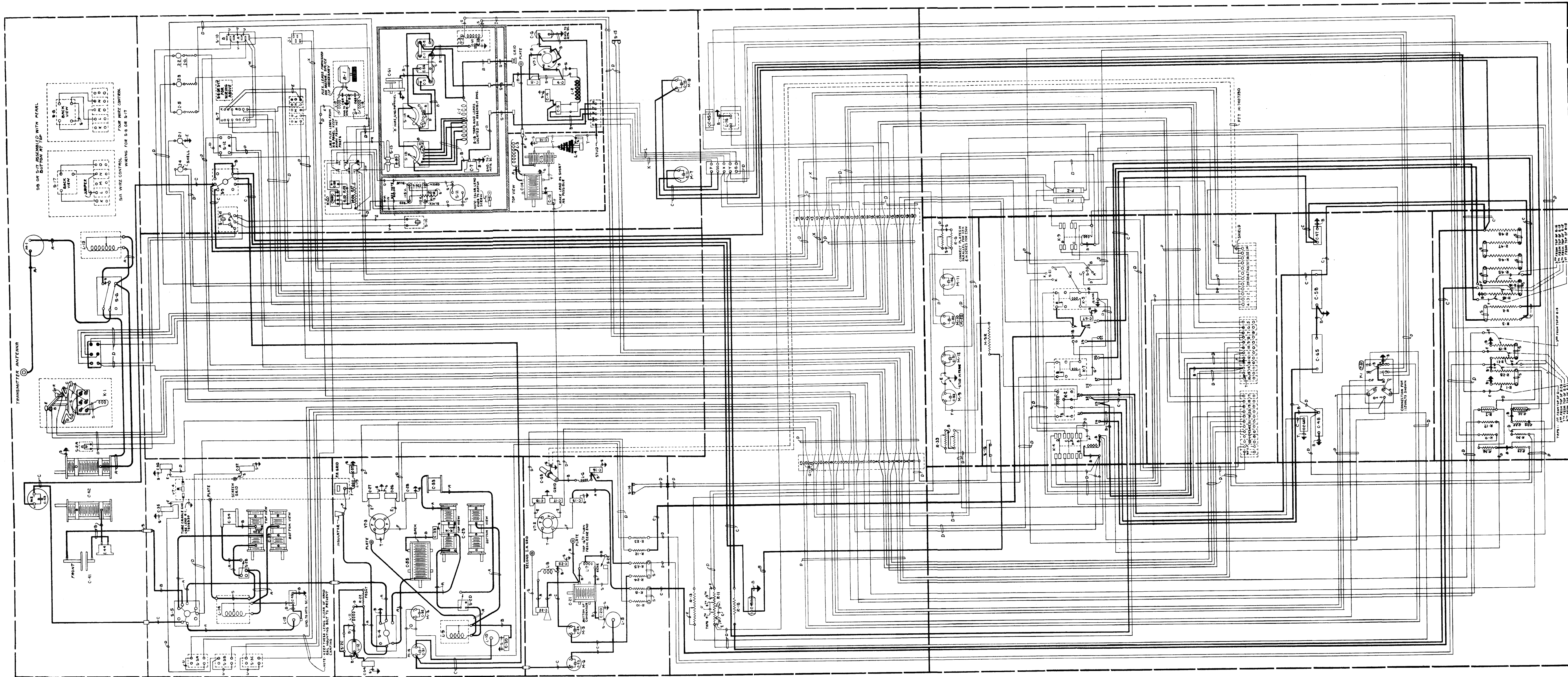
ALL PARTS WITH SYMBOLS LETTERED VERTICALLY (R1) ARE FOR 115 OR 230 VOLT SUPPLY  
ALL PARTS WITH SYMBOLS LETTERED SLANT (R1) ARE FOR 230 VOLTS ONLY  
ALL PARTS WITH SYMBOLS LETTERED IN BOX (R1) ARE FOR 115 VOLTS ONLY

CIRCUIT	115 VOLT CONNECTION		230 VOLT CONNECTION	
	4-WIRE CONTROL	6-WIRE CONTROL	4-WIRE CONTROL	6-WIRE CONTROL
S 21	H TO K	H TO J	H TO K	H TO J
S 18	OPEN	CLOSED	OPEN	CLOSED
S 20	A TO C	A TO D	A TO B	A TO D
T 1	1 TO 5 & 2 TO 6	1 TO 5 & 2 TO 6	2 TO 5	2 TO 5
R 26	PARALLEL CONNECTION LINKS IN 115V POSITION		SERIES CONNECTION LINKS IN 230V POSITION	
R 7	USE DUMMY RESISTOR		REPLACE DUMMY WITH R 7	
R 32	USE DUMMY RESISTOR		REPLACE DUMMY WITH R 32	
R 34 R 35	USE R 35		USE R 34	
R 29 R 36	NOT USED RESISTOR POSITION LEFT BLANK		USE R 29 & R 36 IN PROPER POSITIONS	
R 56 R 57	USE R 56		USE R 57	
R 49 R 58	USE R 58		USE R 49	
I 2 I 6	USE I 2		USE I 6	
S 8 & S 19	USE S 8 & CONNECT AS FOLLOWS K BLANK L TO S 8 COMMON M TO S 8 N TO S 8 O BLANK	USE S 17 & CONNECT AS FOLLOWS K TO S 17 B L TO N M BLANK N TO S 17 A & B COMMON O TO S 17 A	SAME AS FOR 115 VOLT 4 WIRE CONTROL	SAME AS FOR 115 VOLT 6 WIRE CONTROL



115 OR 230 VOLTS D.C.  
4.5 KW

FIG. 14. SCHEMATIC DRAWING TBK-20 D.C. EQUIPMENTS SHOWING UNITS (DWG. W-7300718) 7-14



SYMBOL	DESCRIPTION
A	1/8" THIN COPPER TUBING (SEE NOTE)
B	NO. 8 TINNED BARE COPPER
C	3500 VOLT CABLE V.C.L.C. T OF #20
D	500 VOLT CABLE V.C.L.C. T OF #32
E	FLEXIBLE CABLE
F	FLEXIBLE CABLE
G	NO. 18 TINNED COPPER #20 B.S. BROWN
H	CABLE
I	CABLE
J	CABLE
K	CABLE
L	CABLE
M	CABLE
N	CABLE
O	CABLE
P	NO. 18 TINNED COPPER #20 B.S. BROWN
Q	NO. 18 TINNED COPPER #20 B.S. BROWN
R	NO. 18 TINNED COPPER #20 B.S. BROWN
S	NO. 18 TINNED COPPER #20 B.S. BROWN
T	NO. 18 TINNED COPPER #20 B.S. BROWN
U	NO. 18 TINNED COPPER #20 B.S. BROWN
V	NO. 18 TINNED COPPER #20 B.S. BROWN
W	NO. 18 TINNED COPPER #20 B.S. BROWN
X	NO. 18 TINNED COPPER #20 B.S. BROWN
Y	NO. 18 TINNED COPPER #20 B.S. BROWN

FOR WIRE BILL OF MATERIAL SEE DWG. 7708749

NOTE: ALL LEADS TO METER ARE TO BE LEFT LONG ENOUGH AND FLEXIBLE ENOUGH TO PERMIT REMOVAL OF THESE METERS FROM THE FRONT OF THE SET ON LEAD COVERED LEADS. LEAD A SUFFICIENT DISTANCE TO PREVENT NECESSARY PERMANENCY.

NOTE: EXTREME CARE SHOULD BE TAKEN TO BEYOND THE RUNNING OF THE CABLE OVER SCREENING OR OTHER SHARP PROJECTIONS OR EDGES WITHOUT PROPERLY PROTECTING CABLE WITH FELT OR OTHER SUITABLE MEANS.

NOTE: S-B IS SHOWN IN THE OPERATE POSITION.  
NOTE: OUTSIDE TURN OF CHOICE C-12 IS SHOWN BY SOLID DOT.

NOTE: ON CONTACTOR K-19, CONTACT "B" IS NEAREST TO CONTACTOR PANEL.

NOTE: FOR 115 VOLT OPERATION R-7 AND R-32 ARE BUNNY RESISTORS.  
NOTE: CIRCUIT PARTS WHOSE SYMBOLS ARE UNDEVELOPED WITH A DOTTED LINE ARE FOR 115 VOLT OPERATION ONLY. CIRCUIT PARTS WHOSE SYMBOLS ARE UNDEVELOPED WITH A SOLID LINE ARE FOR 230 VOLT OPERATION ONLY.

TRANSFORMER CONNECTIONS		
SYMBOL	115 VOLTS	230 VOLTS
T1	LINK 1 TO 5	LINK 5 TO 2
T16	AND 2 TO 6	
USE FOR LEADS	1 AND 6	1 AND 6

FIG. 15. WIRING DIAGRAM, TRANSMITTER UNIT, TYPE CAY-52217, 115 V. D.C. OPERATION, AND TYPE CAY-52218, 230 V. D.C. OPERATION. (DWG. W-7500446) 7-15