



# RTTY SWEEPSTAKES CONTEST

OCTOBER 30, 31, 1959

Last month's RTTY carried the announcement of the fall RTTY contest. Details are as follows: starting at 1500 EST Friday, October 30, and running until 2400 EST Saturday, October 31, thus giving thirty-three hours of operating time. Stations will exchange messages consisting of message number, originating stations call, check, or RST report of two or three numbers, ARRL section of originator, local time (0000-2400 preferred), date, and band used. Score one point for a message received and acknowledged by RTTY. For score, multiply total message points by the number of different ARRL sections (see page 6 QST) worked. Two stations may exchange message again on a different band for added points, but the section multiplier does not increase when the same section is worked on another band. Each foreign country counted by ARRL for DXCC credit is treated as a new section for RTTY multiplier credit. Suggested frequencies are 3620, 7140, 14090, 14340, 21090. Logs should be mailed to RTTY, INC., 372 Warren Way, Arcadia, California, not later than November 15th.

Those few who have mailed their logs in for past contests, have said for the most part, "had a grand time, lots of fun, etc." So why not this time, send the logs in, regardless of the score that you may make. This is one way that we can show to other amateurs, just how well we do with RTTY, and our newer form of amateur communications. You do not have to be in the Top Ten to enjoy an SS contest, but rather to try your own equipment in competition with

others. We each have selected a terminal unit (TU), an FSK exciter, various switching circuits to enable you to operate rapidly, and then the receivers and transmitters as well as the antennae which we operate from day to day. Where else can you find an opportunity to find out the answers to some of these questions, as to how good and so on. It does not take Tape equipment to do a good job in such a contest, but rather knowing your own gear and operating it properly.

Pass the word along to those who you work before the SS contest, and set up contacts if you wish, but be sure and take part this year, and SEND IN THAT LOG. See you on all of the bands.

## CONTEST PERIOD

Starting Friday, October 30

EST 1500  
CST 1400  
MST 1300  
PST 1200  
HST 1000  
GMT 2000Z

Ending Saturday night, October 31

EST 0000  
CST 2300  
MST 2200  
PST 2100  
HST 1900  
GMT 0500

# RTTY SWEEPSTAKES CONTEST

## OCTOBER 30, 31, 1959

# AUTOMATIC CARRIAGE RETURN

## For Model 26 Teletypewriter

SAM P. CARROLL, K5SPU

Sam P. Carroll, K5SPU  
2904 Solano Drive, N.E.  
Albuquerque, N. M.  
June 8, 1959

Here is the photographs and drawings of my design for an automatic carriage return for the model 26 teletypewriter. I am also sending you under separate cover a complete unit made up and ready to go.

The unit does not make any attempt to incorporate automatic line feed in its design as I have never found it to be too tiring to reach up and turn the crank if I fail to receive a line feed signal from the transmitting station. It is all mechanical in its design so it does not require any wires, power supplies or other inconvenient things to disconnect or remove when removing the typing unit from the base. It mounts on the two threaded holes in the back of the typing unit casting using the two  $\frac{1}{4}$ " x 20 bolts provided. While I do not claim it to be superior to the Auto-mate 26, I do think it is simpler, and easier to duplicate, and it performs the most desirable function without the complications of wires, solen-

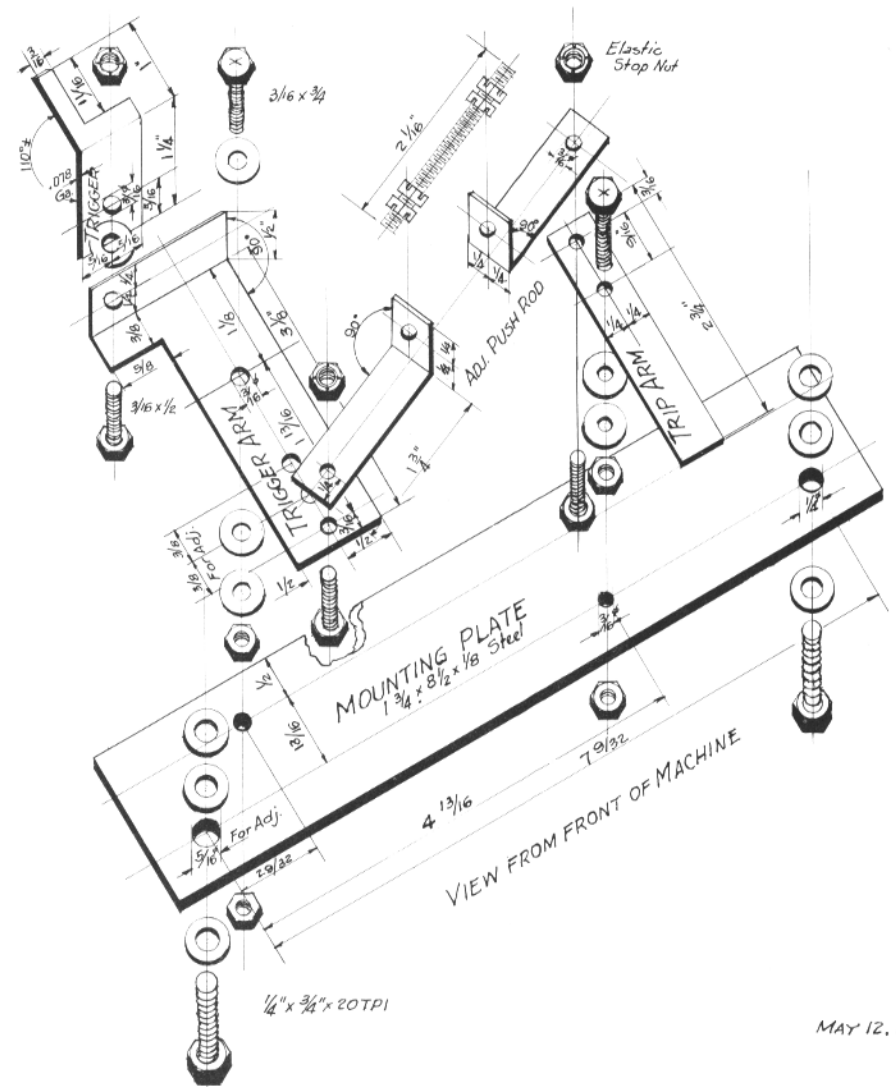
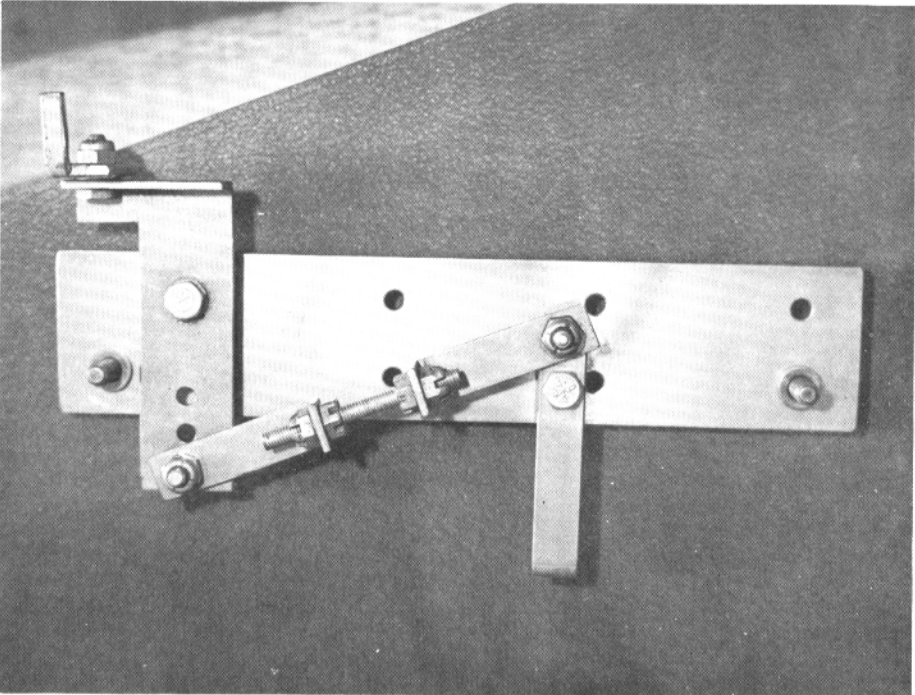
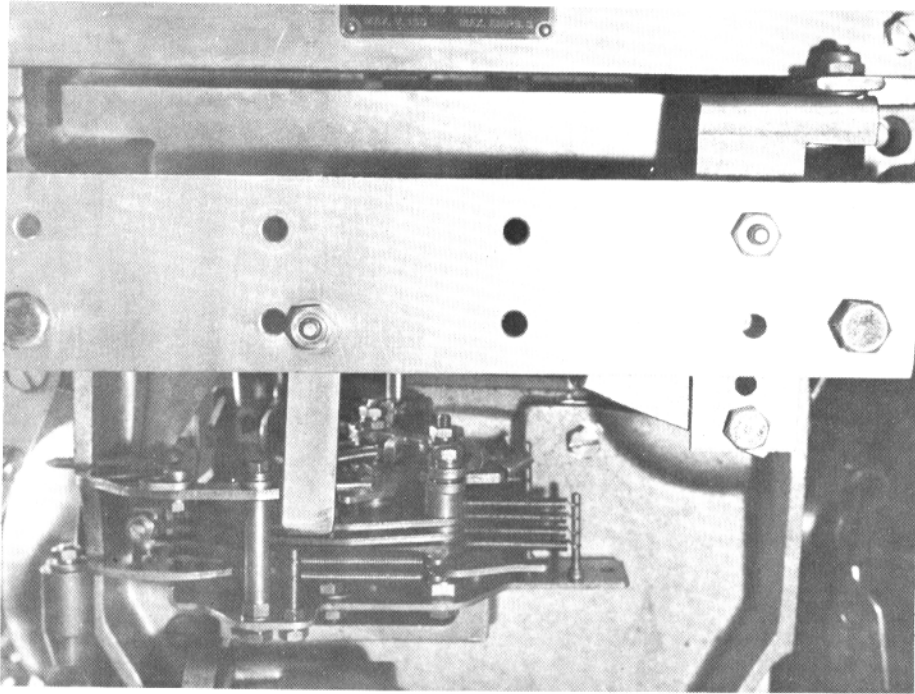
oids, and micro-switches. It has been adjusted to return the carriage at the end of a standard 72 character line but the adjustment might not be correct for another machine. The adjustment for this is the threaded push rod. The mounting holes have been enlarged to provide more lee-way in mounting and adjusting. The washers provided on the mounting bolts are necessary to provide proper spacing from the working parts of the machine.

The photographs show the unit assembled and viewed in place on the machine and the assembly off the machine viewed from the front. The drawings and sketches give the dimensions for the various parts but it may be difficult to duplicate these pieces exactly and even unnecessary as the main thing I am trying to put across is the idea of how the gadget works. This unit I am sending you is the third one I have made and I have the parts cut out for one more. By the way these parts are cut out by hand using a hacksaw and a file. They were made from surplus iron fastenings found in the junk box at the telephone company where I used to work.

- 0 -

### TO OUR READERS . . .

Please take a look at your name and address on this issue, you will note a date below the town and state. If it shows a date before current date, this will be last issue mailed you. Costs of printing the bulletin are too high to continue carrying subscription beyond expiration date.



MAY 12, 1957

## AUTOMATIC CARRIAGE RETURN For Model 26 Teletypewriter

SAM P. CARROLL, KSSPU

# NCARTS RTTY Demonstration At San Jose Pacific Division ARRL Convention



Left Foreground Model 26, background 14 reperf  
On table: HT-32, 75A-4, URA-8TU and 14 TØ  
At right, Model 15



Where is that CQ tape?  
Russ Stedinger, K6ZBL



Sincere thanks to the RTTY gang for their many expressions of good wishes—and especially for the cheery autographed card from the NCARTS dinner at the El Rancho April 17th. Next to being there in person—that was the most! The terminal unit here at W6NKP is steadily improving and when the shift returns to a semblance of normalcy, we hope to be back in circulation again—tho possibly on a somewhat restricted basis.

The P. T. and T. Co. in San Jose are agreeable to furnishing teleprinter equipment for exhibition and demonstration at the RTTY section of the Pacific Division A.R.R.L. convention to be held in San Jose July 3, 4 and 5. This will be in addition to printers, tape distributors, reperfs, converters, etc. which our exhibitor members will have in operation. This convention will be the best ever—Let every NCARTS member put in a plug for it on each RTTY contact. I have already received word of hams coming from as far as Salt Lake City.

We learned on a recent RTTY broadcast that due to the tremendous multiplication of high power transmitting equipment—some early warning scanners emitting peak power of 10 megawatts—the ether is simply seething with ergs of electrical energy. In a dreamy moment, like Scratchi, I was struck by a tremendous idea—the drawing board is evolving a receptor system for intercepting, concentrating and converting this boundless energy into useful power to light and heat the home, cook the food and have plenty left over to operate the Model 26, converter and associated gear. Just as soon as we have tried it out—the RTTY gang will be the first to get the dope in an upcoming issue of "Mark-Space-Gram."—Finis. 73. Doc, W6NKP

— 0 —

Do you know if it is possible to purchase the cabinets and front panels for the URA-8. I wrote Hoffman Radio, and they did not reply. —W1AFN

I just received the model 26 and am enclosing the completed waiver form. The machine arrived in good shape and kicked right off as soon as I hooked it up. It's rather interesting that the first ham signal I copied was yours in QSO with a Ham in Phoenix, Arizona. Both signals were food and the machine gave excellent copy.

As you can see the machine is doing fine. —My typing is the only reason any mistakes are being made.

I want to take this opportunity to thank you very much in extending me the courtesies you have and in helping me obtain the machine. I hope to be on the air within the next few days and am looking forward to working you on RTTY. If I can be of any help to you or your organization in this area do not hesitate to let me know and I will be most happy to assist in any way I can. I enjoy your Bulletins very much and consider them excellent.

**Subscription Rate \$2.75 Per Year**

**RTTY is the Official Publication  
of the  
RTTY Society  
of Southern California**

**and is published for the benefit of all  
RTTY Amateurs and Experimenters**

Permission to copy is granted  
provided credit is given.

For Information Regarding the  
Society Contact the Following:

W6AEE — Merrill Swan

W6SCQ — Lewis Rogerson

For Traffic Net Information:

W6FLW W6IZJ

For "RTTY" Information:

W6DEO W6AEE

Donald S. Merten. 166-96 23rd Avenue, Whitestone 57, New York. Located 18 miles due east of Times Square but still within the city limits of New York City.

Age 41, wife Jeannie. Daughter — Donna Jean WV2CFY age 17.

Graduated University of Wisconsin B.E.E. Northwestern M.E.E. Served as prof. of electronics 4 years ass't. chief engineer, Sperry Gyroscope Corp. electronics plant. 3 years, U. S. Air Force Colonel. 4 years. Presently employed as president Eldico Electronics. Manufacturers of military, commercial and amateur communication equipment. Originally licensed as W8FIT then W9ROI. Now K2AAA at residence and W2UOL at summer home at Montauk Point, Long Island, New York. Hold first class radio telephone and telegraph commercial licenses. Have BPL, A-1- OPS, WAS, WAC, 30 WPM CP, DXCC - CW - PHONE - SSB for both K2AAA and W2UOL.

Other hobbies, deep sea fishing, hunting, photography. Rigs at K2AAA may be anything and change from week to week—Nice to be in business—Hi, at present, two Eldico SSB-100 F's drive and of the five amplifiers. Can operate on any two bands at the same time—two finals—pair of 4-250 A's modulated by a pair of 4-250 A's. One final pair of 4CX 250A's linear amplifier. One final three 4CX300's . . . One final single 4X250A driving water cooled version of 4CX-1000.

Receivers, four. Two Collins 75-4's, one Collins 51J4, one Hammarlund SX 600.

Antennas . . .; four. Rotary beam—W3DZZ tri-band, long wire, trap long wire, vertical ground plane.

RTTY gear—One Kleinschmidt model 150 Page printer, one Kleinschmidt model 120 reperforator, receiver converters two, one surplus URA-8A, one Eldico M-105, Keyer—FSK. Two Eldico M-104.

Mobile—Eldico SSB-100M all bands.

Emergency—6 KW diesel generator that starts automatically on power failure.

(Ed Note: It was Don's daughter, Donna Jean who recently made the round the world trip on the "Flying Enterprise II," with Cap't. Kurt Karlsen, W2ZXM/MM and during first month of school was still at sea and all lessons handled via RTTY between K2AAA and W2ZXM/MM enabling Donna Jean to maintain her grades.)

— 0 —

It was certainly nice of you to send me the back issues of your fine publication and I have enjoyed them no end.

Enclosing photo of my home station. As you will see I am using Model 26, home made converter and RME receiving equipment. Rack on left contains all RTTY gear, and the two transmitters are Temco's, antenna multiband 50 feet high.

Have enjoyed RTTY,—pointing towards developing three point County wide net.

Your help is certainly appreciated and will keep you posted on progress of Florida RTTY Society, since I am acting Secretary.

73—FRED, W4RWM

— 0 —

Have had the usual troubles with my model 26 but will say that I have certainly learned a lot about this model in the past year.

Not active transmitting for a while here due to moving the shack from the second floor down to the recently remuddled basement, but have the receiver and converter and printer going.

Several stations in this area are now active on six meter AFSK RTTY. In fact, the six meter band locally is the most active amateur band, mainly for AM phone.

The main problem here at the moment is in getting a new antenna feedline run in to the new shack. With the real severe winter weather we are having, it may be some time before I get on the air again.

73 from Snowbound Michigan,

RUSS MERCER W8JST

— 0 —

The essentials are a W9LKB converter with some modifications, a WIBGW control center, again with modifications, and a W6AEE scope setup. The scope is the only unit that is finished completed and it works like a charm. I hope to have the rest of the stuff finished by the beginning of the summer. The whole outfit is racked in an 8 foot rack.

Cal Poly is working toward getting their station, W6BHZ, back on the air. We have a new Johnson Ranger with 6N2, an NC-300 with all converters, beams for 2 and 6 and a Johnson matchstick for the lower bands. Everything should be on the air by the middle of spring, I hope.

MICHAEL, K6TNA

— 0 —

Sure sorry did not get to work K6USA, altho I hear tell you were kinda very busy. Managing to have fine contacts with Eric, VK3KF each weekend, and got in a land-line QSO with Cas shortly before he closed up his RTTY-shop. ZL1AHO and ZL1AKW seemingly got going on fifteen long enuff to work Eric. I have not been having the usual Sunday morning QSO with them on 80 metres, since we got our additional FSK-allocation, and its amazing how soon one can get out of touch with the "goings on" or the lack of it! Eric and I have had fine contacts also with Allen W4 IYP, San Mateo, Fla. and made second and third contact respectively with K8JON! Stateside activity on fifteen would seem to have "eased off" considerably this year, but I am sure it is only a "passing phase" and it won't be too long before the fellows are back there with us. Hear WOAJL on the high end of twenty calling very consistently but not able to attract his attention! Both Eric and myself are out of touch with the Bay area, but I expect to raise friend Bob W6NRM/6 at any time. Alec, ZL3HJ is getting under way, and should be appearing on the air shortly. The "grape-vine" tends to indicate that Bill Scarborough ZK1BS (Rarotonga) continues to talk "RTTY," so mayhap he will be "on" one day. No information available from Jack, VR2AC. Feel perhaps Jack may arrive back in New Zealand one of these years, and may then find the time to punch the green keys.

Commercially, "RTTY" downunder appears to be in the grip of multifarious problems of propagation, and numerous "pow-wows" taking place on the "why's and wherefores," so it may be interesting to see what comes out of it all. Latest information indicates that the Royal New Zealand Air Force will be testing AFSK to the island outposts of the Fiji group.

For the next week while I am going to try to get onto fifteen metres from 0300 onwards, 21081 kcs, throughout the week days in the hope of "scaring" up some of the gang.

I wonder if anyone is interested in long haul RTTY using narrower shift, of the order 425 or 170 cps? Keeping a listen on forty frequently, but commercial BC stations seem to have taken complete charge down here!

SSB is extremely popular down here in New Zealand currently, and phasing rigs

taking the honours. Considerable interest in being shown in the ceramic filter put out by Clevite Electronic Components in Ohio, altho none available here in New Zealand! Maybe, one of these days . . .

Hope to be "on" with my filter rig shortly probably fifteen and ten metres.

So, Merrill, hope you had a nice trip east, and guess Margaret was thrilled that you both could make it this year. I believe the Boston "tea party" was a wonderful show, and I am looking forward to reading about it in due course. I was able to have a grand contact on CW with Mary, K6OWQ, recently. Long time since I worked them.

Merrill, hope I can have some RTTY contacts with you very soon, and with others of the LA gang. I am hoping to meet Dick W6AFX during his visit to Wellington, NZ, even tho he tells me his time will be very limited! 73. Bruce

- 0 -

Please note the change of address card enclosed. I am leaving July 1st, for a two year period, for Seoul, Korea. Although I am not sure whether I may be licensed by the Korean government, I am taking a receiver, a Johnson Valiant transmitter and associated gear. I'm leaving my model 26 with local friends who will ship the printer to Korea if I can get on the air.

If I am licensed in Korea, I will try to get the RTTY in operation. I will be in the market for a good TU in that case. Hope to CU as an HL.

Sincerely yours,

W. M. Shenkel

- 0 -

I had hoped that I would be able soon to end my 4-year leave-of-absence from A.R.T.S. but recent events here seem to be ordering otherwise. The illness in the family is still with us—took the XYL back to the hospital Thursday (the umpteenth time since early 1955) and have returned to my old task of corridor pacing. It leaves me a great deal of time to make new plans—but no time at all to put them into effect!

There has been one bright side to the picture, however. The large amount of time I have stayed at home because of the XYL's condition (she cannot be left alone and we only have a nurse part time). I have put to use improving my equipment and doping out some brand new gizmos. In the years between 1946 and 1955 I always was so tied up with A.R.T.S. affairs I had to curtail a

lot of my constructing activities. I have been able to catch up a bit in this respect lately.

Most of my on-the-air RTTY work is by auto-start on the V.H.F. as you know—I am a dyed-in-the-wool VHF-er. The half gallon on 80 and ditto on 20 meters has been gathering dust for years. I do have a panoramic-scanning auto-start receiver on 80 though—and sometimes I treat the local gang on two to tape perforated on this unattended setup from 80. Can't do much "live" two-meter RTTY work however. My home is down-in-the-valley for VHF and local zoning restrictions forbid putting up a pole high enough to remedy the situation. So all but strictly local RTTY QSO's are from this location at A.R.T.S. Unfortunately I can't usually get over here in the evening, when the local RTTYers are on, so I frequently cut my lengthy tapes at home and bring them over whenever I get by here. At the same time I tear off traffic directed to me. Not very satisfactory, you are probably thinking — you are so right, Merrill — but it is better than being off the air, isn't it?

Built a home-made computer out of an awful mess of RTTY gear and a magnetic-core "memory" unit I designed for a code-translating job originally. Found a simpler way to do the code translation so that left me with a core-storage unit into which I had some \$200 bucks invested. Believe me—the RTTY gang ought to take more interest in electronic "brains"! Once the original investment is made there isn't very much additional expense to make it do completely new jobs. I got mixed up in this deal by being retained by a local factory who bought a British-made computer-programmed machine-tool system, to iron out some of the "bugs." I took the job on a nearly break-even basis in order to get my nose into the "gizzard" of the English computer.

Am now the proud owner of a brand-new Kleinschmidt high-speed printer which didn't cost me a penny. I have typed on just about every printer model there is but—brother!—this one is the tops! Even the model 28 takes a back seat to this (although I would like to have a 28 to round out my collection). I now have a museum collection

—which will someday become the property of the society—of teleprinters. I have the (old) Morkrum machines, the Barclay Page printer, Buckingham, Creed, Siemens, an old Edison ticker, an early Kleinschmidt, 2 7-unit RCA printers, one complete and one almost-complete "radiotype" (6-unit code), a Great-Northern Morse-to-teletype converter (mechanical). A Murray multiplex, a Lorenz (it is almost like a model 15 but has a 4-row keyboard and all screws have metric thread), (picked this up in a Philadelphia military surplus outfit but they were unable to tell me how a German machine got there). I swapped a model 26 with a British ham for a British teletype machine and now understand why the Canadians prefer to use U.S.A. printers, hi!

As usual—my letters are very infrequent but lengthy! Just wanted to prove that—I am still keeping my hand in. In fact I am rather getting to like my "retirement" from society affairs for the simple reason that I am getting much more accomplished in personal projects. Never did want to get so deeply involved in the organizational phases of A.R.T.S. but the gang seemed to expect it of me.

Don't feel obliged to turn around and answer this, Merrill. I have kept pretty good tabs on your activities through "RTTY" although it would be nice to have a letter from you. I miss the nice interchange of letters I used to have with Shep, W6LS. I still have over 100 letters, notes and hamograms he wrote me over a period of several years. Leo used to keep me filled in solid on the doin's of the gang out that-a-way since the very start of RTTY there and, although I never met him personally, felt that I knew him as if I met him every day.

Don't mind the faded TTY paper this is written on—tons of it released on surplus locally—it is World-war II stuff—some of the boys here say it could be Civil War surplus! We'll never use it all up! Hi!

Personally regards,

John Williams, W2BFD

- 0 -