

RECEIVED FEB 05 1982

RTTY

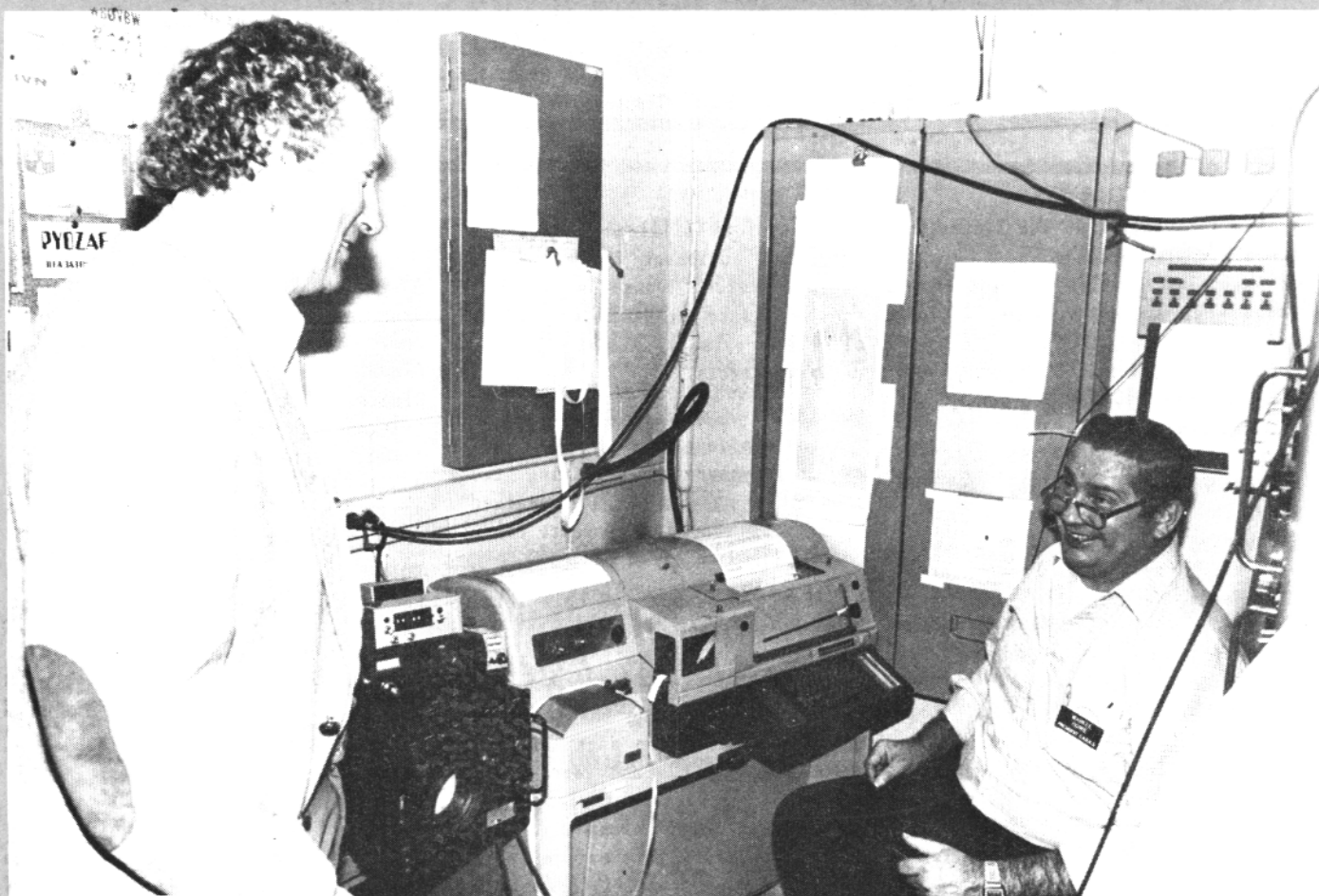
VOLUME 30 NO.2

FEBRUARY 1982

Journal

85 CENTS

EXCLUSIVELY AMATEUR RADIOTELETYPE



SEE PAGE 8 COLUMN 3 FOR WHO'S WHO HERE
CONTENTS
CONTESTS

RTTY JOURNAL

DEE CRUMPTON, N6ELP
OWNER-EDITOR
POST OFFICE BOX RY
CARDIFF-BY-THE-SEA, CA 92007

JOHN P. GOHEEN, K6GNYK
ASSOCIATE EDITOR

BUSINESS OFFICE
1155 ARDEN DRIVE
ENCINITAS, CA 92024
TELE: 714-753-5647

POSTMASTER SEND FORM 3579 TO:
POB 179, CARDIFF, CA 92007

SUBSCRIPTION RATES

USA	\$ 7.00 PER YEAR
CANADA, MEXICO	7.50 " "
CANADA AIR MAIL	8.50 " "
MEXICO AIR MAIL	8.50 " "
FOREIGN	7.50 " "
FOREIGN AIR MAIL	13.50 " "

BACK ISSUES

A DUPLICATE OF ANY BACK ISSUE MAY BE OBTAINED FROM RED WILSON, 4011 CLEARVIEW DRIVE, CEDAR FALLS, IA 50613. \$1.00 PPD & SASE. REPRINTS OF ALL (2) UART ARTICLES \$2.00PPD.

MANAGERS

JEAN HURTAUD, F8XT
CHILLAC
16480 BROSSAC, FRANCE

DR. ARTHUR GEE, G2UK
21 ROMANY ROAD, OULTON BROAD
LOWESTOFT, SUFFOLK
NR32 3PJ, ENGLAND

KANJI YAMAMURA, JH2FH
2-42 UENOKI, IZUMI-MACHI
TOKI-CITY, GIFU-PREF
JAPAN MAIL NO. 509-51

THE PUBLISHER ASSUMES NO RESPONSIBILITY FOR ERRORS, OMISSIONS AND ASSUMES NO LIABILITY FOR SUCH. REPRODUCTION OF THIS MAGAZINE MUST BE ACCOMPANIED BY CREDIT TO THE JOURNAL AND THE AUTHOR. THE RTTY JOURNAL IS PUBLISHED 10 TIMES PER YEAR WITH MAY/JUNE AND JULY/AUGUST COMBINED. PUBLICATION WILL BE ON OR ABOUT THE 20TH OF THE MONTH. SUBSCRIPTIONS AND ADS MUST BE PAID FOR BY CASH, CHECK OR MONEY ORDER IN UNITED STATES FUNDS ONLY.

CONTINUED FROM PAGE 15

following stations on the listed frequencies:

Transmitting Station-NAM U.S. Naval Comm. Area Master Station, Norfolk, Virginia.

Frequency in KHz: 4005, 7645, 14400.

NPG-U.S. Naval Comm. Station, Stockton, California.

Frequency (KHz) 4010, 7365, 13927.5

NAV-HQ Navy-Marine Corps, MARS Station, Cheltham, Maryland.

Frequency (KHz) 7385, 13975.5

WAR- U.S. Army Station Radio Station Fort Meade, Maryland

Frequency (KHz) 4030, 6997.5, 14403.5

AIR-2045th Comm. Group Andrews AFB, Washington, D.C.

Frequency (KHz) 6995.5, 13997.5

RADIOTELETYPEWRITER RECEIVING TEST.

The radioteletype "RTTY" receiving test will transmitted at 60 Words per minute. Radio Station "AIR" will transmit using 850 hertz (wide) shift All others will transmit using 170 hertz (narrow) shift. A ten-minute CQ call for tuning purposes will begin at 16/0335 UTC. The special Armed Forces Day message from the Secretary of Defense will be transmitted at 16/0345 UTC. This test is to exercise

the technical skill in aligning and adjusting equipment by the Amateur radio operator. Transmission will be from the same stations and frequencies as previously listed for the CW receiving tests.

SUBMISSION OF TEST ENTRIES

Transcriptions of the CW and/or radioteletypewriter receiving tests should be submitted "as received". No attempt should be made to correct possible transmission errors.

A. Time, frequency and call letters of the military station copied as well as the name, call sign and address (including zip code) of the individual submitting the entry must be indicated on the page containing the message test. Each year, a large number of acceptable copies are received with insufficient information or the necessary information was attached to the transcription and was separated, thereby, precluding the issuance of a certificate.

3. Entries must be postmarked no later than 22 May 1982 and submitted to the respective military commands.

Stations copying NAM, NAV or NPG send entries to:

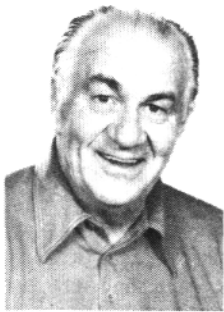
Armed Forces Day Test, HQ, Navy-Marine Corps MARS, 4401 Massachusetts Avenue, N.W., Washington, D.C. 20390. Stations copying WAR send entries to: Armed Forces Day Test, Commander, 7th Signal Command, Attn: CCN-PO-OR, Fort Richie, MD 21719.

Stations copying Air send entries to: Armed Forces Day Test, 2045th CG/DONJM, Andrews AFB, Washington D.C. 20331.

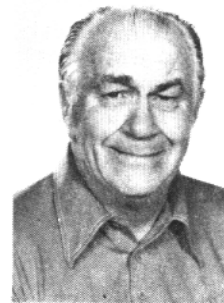
NOTE FROM THE EDITOR:

For those of you that are not contest buffs, my sincere apologies for having all of the JOURNAL devoted to contests this month. This is the season for contests however, and the contesters must have their day also. Debuting in this issue will be Bill, W0LHS in the DX column. Bill has been licensed for 49 years and holds extra class and 1st and 2nd radiotelegraph licenses, he is an instrument rated pilot and a retired industrial photographer. Bill's was the 1st RTTY station in North Dakota in 1952 with a model 12 ITY. He was formerly VQ4EHG, and VQ3GHE. In his next column he can let you in on what equipment he uses and where/when he may be found on the bands. Send DX material to his QTH.

DEE, N6ELP.



DX RTTY



BY BILL

I GOT HIM

WØLHS SNYDER, 1514 S. 12th Street, Fargo, ND 58103

HE GOT AWAY

JA1JDD reports from Tokyo that JA1-MIN and JA1BK are planning a trip to Macao in February. This is welcome news for us who missed the last RTTY adventure in 1981.

15FOS reports working 9M2MW in Penang and hearing YC2CGW.

9G1JX in Ghana, CX2GB in Uruguay, CT2AK in the Azores and HT5JAR are new ones for WSHEZ.

ON4UN, an honor roll SSber with 316/336 is a recent convert to RTTY. His honors include 5 band WAZ #1 and 3074 counties! He reports 5NOKWS, SV9PI and CT1HQ as new ones. John has worked over 60 countries and 42 states in his first four weeks on the mode. He's a DX tiger!

KG4AH recently put Guantanamo Bay on the RTTY map. Have heard him on 15 and 20.

CR9JA QSL cards are rumored as going out.

HT5JAR in Nicatagua appeared on RTTY December 22nd and created a mini-pileup. W2LFL was his second QSO with PJ3SF right behind.

FY3AQ (Box 89, Cayenne 97301) reports three other FY7 stations on RTTY. FY7YM and FY7B0 complete the trio. All work the three high bands.

LX1JE is quite active from Luxembourg. Others recently worked are LX2BG, LX2LH and LX1JI.

OX3FG is the only RTTY station in Greenland. Look for Walther weekends on ten after 1700Z. Ask him about his world-wide adventures...like climbing Mt. Kilimanjaro in Africa, and hiking in Nepal!

C31CJ is a new one for ON4PL.

ADOS of Kingman Reef and Palmyra Island fame is planning another DX-pedition to an undisclosed place. George says he would like to take RTTY gear on the 1983 adventure.

HC1JX John, has been very active on 10 meters around 1600Z, QSL POB

691, Quito Ecuador.

WB5HBR is the QSL manager for DU1EFZ.

KX6QC QSLs to Cliff Sides POB 65, APO San Francisco, CA 96555.

KG4AH on Gitmo, 20 meters around 1500Z QSLs to Mike Waldrop POB 73, FPOB Norfolk, VA 23593.

As you have noticed from the heading, Bill has taken over the duties of the RTTY JOURNAL DX EDITOR. I hope that everyone will give him the same support that I have received these past almost five years. I have enjoyed this job very much and look forward to helping Bill from time to time. I will be in Australia, Singapore, Hong Kong and the Phillipines during the later part of this year and next year and will be on the air from DU and VK land. So hope to print with some of you from there.

.....73 de "SKIP".....

AWARDS SECTION

DXCC # 64 dated 17 December 1981 goes to WB6CYA, Karl "Skip" Prinsen.

DXCC #65 dated 19 December 1981 goes to JA1MIN, Michio Ogawa.

W.A.C. #21 all on 15 meters dated 20 December 1981 to ON7EU, Jan Cassimon.

KONTEST KORNER

B.A.R.T.G. 20-22 Mar 82 Feb 82

USA RTTY 4 April 1982 Jan 82

VK/ZL/Oceania June 1982 coming

S.A.R.T.G. 14-15 Aug 82 Feb 82

C.A.R.T.G. October 1982 coming

W.A.E.D.C. November 1982 coming

CONTESTS*CONTESTS*CONTESTS*CONTESTS*

12th S.A.R.T.G. WORLDWIDE CONTEST RULES:

1. TEST PERIODS:

A. 0000-0800 GMT Sat. Aug. 14

B. 1600-2400 GMT Sat. Aug. 14

C. 0800-1600 GMT Sun. Aug. 15

2. BANDS: Use all bands: 3.5-7-14-21-28 MHz.

3. CLASSES: A. Single operator

B. Multi-operator, single operator.

C. SWL's.

NOTE: Logs from multi-operator stations must contain the names of all operators involved.

4. EXCHANGE: RST and QSO number.

5. POINTS: QSO with own country five points. Other country in same continent ten points. Other continent fifteen points.

In USA, Canada and Australia, each call-district will be considered as a separate country. The same station may be worked once on each band for QSO and multiplier credits. Only 2-way RTTY QSO's will count.

6. MULTIPLIERS: Use the DXCC list and each district in W/K VE/VO and VK.

NOTE: Contact with a station which would count as a multiplier must be found in at least 5 logs, or contest log from the multiplier station must be received in order to be valid.

7. SCORING: Sum of QSO points x sum of multipliers.

8. SWL's: Use same rules for scoring but based on stations and messages copied.

9. LOGS: Must be received by October, 10th, 1982.

NOTE: Logs must contain: band, date, time GMT, callsign, exchanges sent and received, points and multipliers. Use a separate sheet for each band and enclose a summary sheet showing the scoring, classification, callsign, name and address; in case of multi-operator stations, the names

continued on page.

and callsigns of all operators involved. Comments will be very much appreciated. Send logs to: S.A.R.T.G. Contest & Award Manager, OZ2CJ, C.J. Jensen, POB 717, DK-8600 Silkeborg, Denmark.

10. AWARDS: To the top stations in each class, country, W/K, VE/VO and VK call district.

Results of the 11th S.A.R.T.G. World-wide RTTY Contest 1981 are as follows

WORLD TOP SCORES	SINGLE OPERATOR
T5K GK	444,500
I5PCV	388,220
I2DMI	369,360
SM6ASD	286,650
I2ZGP	277,160

MULTI OPERATOR

LZ2KRR	380,600
SJ9WL	190,485
DFOMN	163,240
OK3KFF	155,770
Y21BB/A	114,245

SHORT WAVE LISTENERS

OK3-27OLO	304,000
H. Ballenberger	282,975
OK1-11857	253,650
G8CDW	181,020
OZDR 2135	160,860

SINGLE OPERATOR

CALL	POINTS	CALL	POINTS
6.ON5WG	275,025	28.WA4DRU	74,520
7.ON7AZ	252,225	29.WB5HBR	72,500
8.W3FV	251,905	30.G4KHX	66,960
9.OZ1CRL	247,680	31.GW3EHN	62,880
10.LU1HCE	236,800	32.SM5FUG	54,540
11.K7BV	231,385	33.Y39XN	53,795
12.HB9LP	220,545	34.JA2VFW	52,030
13.HB9CIH	220,440	35.XE1VV	47,300
14.I8JRA	218,680	36.Y43ZK	47,000
15.Y39UO	188,650	37.VK5IF	46,360
16.OZ9GA	160,860	38.K6WZ	40,920
17.DK1BX	149,240	39.DF6AI	39,375
18.G4CTQ	136,160	40.WA6WGL	34,650
19.Y27NN	133,515	41.Y33TA	29,200
20.I4JXE	103,845	42.WØLHS	33,250
21.JA3AHQ	94,905	43.I2DJX	32,400
22.JH1BIH	88,750	44.LA7QM	27,690
23.JR2TZL	88,245	45.PAØCWI	24,795
24.ON6HF	85,785	46.DL1VR	23,120
25.WB3FSN	82,800	47.SM6AEN	22,940
26.W5HEZ	78,945	48.DK9CK	20,475
27.VE3CYX	74,880	49.SM5HEV	20,100

CALL	POINTS	CALL	POINTS
50.W6RJM	18,630	67.DF6ZY	7,600
51.WA6B0B	15,990	68.YU2CB	7,000
52.DJ9MH	14,985	69.DJ2QF	6,480
53.SP1PBW	13,650	70.PP7GAI	6,480
54.Y34XF	13,350	71.HA2MV	5,530
55.OH8TA	13,260	72.SM5AAY	4,400
56.SM6CYZ	12,900	73.ON7EU	3,920
57.Y56YF	12,880	74.DJ2YE	3,150
58.VE7DOC	11,270	75.I8AMP	2,280
59.W2KHQ	11,235	76.Y51ZF	2,450
60.Y44XI	10,640	77.Y23NE	2,280
61.KD4QM	10,605	78.DU1EFZ	1,560
62.LA2IJ	9,585	79.DK4IS	1,215
63.Y32ZF	9,460	80.NN4K	880
64.WB4UBD	8,835	81.DK7JY	735
65.OZ7XE	8,670	82.TG9SO	540
66.SM6CAL	8,200	83.G3HJC	120

Multi-operators

6.HA5KBM	90,565	9.SP3KEY	45,225
7.OK1KRY	56,160	10.HA5KKC	33,200
8.HA6KVD	49,500		

SWL

6. Y2-2814/M	143,370
7. DE1GMH	86,420
8. Kurt Wüstner	84,300
9. Y2-10521 O	54,880
10. Y2-EA-11633 L	14,560
11. Y2-11065 F	10,400
12. Y2-11032/F	4,320
13.NL 4483	2,775

Check Logs from: SM5HDL, W6JOX, SM6ICD, GW3IGG, SM6DDW, SM7BBJ, Y64UL, Y46RF, I2JIN, OZ1DAF.

B.A.R.T.G. SPRING RTTY CONTEST 1982

When- 0200 GMT Saturday March 20th until 0200 Monday March 22, 1982. The total contest period is 48 hours but not more than 30 hours of operator is permitted. Time spent as listening periods counts as operating time. The 18 hours of non-operating time can be taken at any time during the contest period but off periods may not be less than 3 hours at a time. Times off the air must be summarised on the Summary sheet.

Who- There will be separate categories for Single Operator, Multi-Operator and SWL stations.

Bands- 3.5, 7.0, 14.0, 21.0 and 28 MHz Amateur Bands.

Stations- Stations may not be contacted more than once on any one band but additional contacts may be made with the same station if a different

band is used.

Countries- The ARRL DX Countries List will be used, and in addition each W/K, VE/VO and VK call area will be counted as a separate country. Note: W/K, VE/VO and VK count once only for QCA purposes.

Messages- Messages will consist of: Time in GMT. This must consist of a full four figure group and the use of the expression "Same" or "Same as yours" will not be acceptable, RST and message number. The message must consist of a three figure group starting at 001 for the first contact made.

Points- Points can be claimed as follows: All two-way RTTY contacts with other stations within one's own country will earn two points. All two-way contacts with other stations outside one's own country will earn ten points. All stations can claim a bonus of 200 points for each country worked, including their own. Note that any one country may be counted again if worked on a different band but continents are counted once only. Note: proof of contact will be required in cases where the station worked does not appear in any other contest log received or the station worked does not submit a check log. Scoring- Two-way contact points times total of countries worked. Total country points times 200 times number of continents worked (maximum 6). Add total of the above to obtain the final score.

Logs and Score Sheets- Use a separate sheet for each band and indicate all times on the air. Logs to contain- Date, Time GMT, Callsign of station worked, RST and message number sent, Time, RST and message number received and points claimed. Note: Logs received from SWLers must contain call sign of station heard, report sent by that station call sign of the station being worked. Also Time GMT that the QSO was logged. Incomplete loggings are not eligible for scoring. The Summary Sheet should show the full scoring, the times ON the air and in the case of multioperator stations, the names and call signs of all operators involved with the operation of the station during the

continued on page 5

contest.
 All logs must be received by May 31, 1982 in order to qualify.
 Summary and Log Sheets are available from the Contest Manager at the address shown below as follows: In the United Kingdom, on receipt of a large stamped addressed envelope of at least 9" by 6". All other countries require no envelope but will need 2 IRC's to cover cost of postage. Send your contest or check log to: Ted Double, G8CDW at 89 Linden Gardens, Enfield, Middlesex, England EN1 4DX. The judge's decision will be final and no correspondence can be entered into in respect of incorrect or late entries and all logs submitted shall remain the property of the BARTG.
 Certificates will be awarded to the leading stations in each of the three groups, the top station in each continent and to the top station in each W/K, VE/VO and VK call area.
 Additional Notes: If a contestant manages to contact 25 or more different countries on two-way RTTY during the contest, a claim may be made for the Quarter Century Award issued by the British Amateur Radio Teleprinter Group and for which a charge of 3 dollars US or 15 IRC's is made. Holders of existing QCA awards should indicate and list any new countries to be added to their existing records. Make your claims at the same time that you send in your log. Additionally, if any contestant manages to contact stations on two-way RTTY within each of the six continents and the BARTG Contest Manager has received either a contest log or a check log for each of the six stations concerned, a claim may be made for the W.A.C. Award issued by the RTTY JOURNAL.
 There are two minor changes in the Rules for this contest compared with the rules in previous years. 1. SWLers are now only required to log the message from the station heard, and not the messages from both stations involved in the contact. 2. Holders of existing QSA awards are requested to list any new additions in the way of countries to be added to their records. In the past this has been done by the contest manager automatically, but the revised system will be speedy,

DARC "CORONA" 1981 CONTEST

CALL	SCORE	CALL	SCORE
1.4X6CV	945	14.DL8GAM	465
2.0Z1CRL	798	15.I8JRA	432
3.I7FKO	738	16.DF5FW	190
4.I2WEG	735	17.DLØ8D	176
5.EA8RG	676	17.DL8CX	176
6.DKØFR/A	648	19.KØJH/4	168
7.N8ES	624	20.VE3CYX	160
8.TI2DO	602	21.WA6WGL	136
9.DF6ZV/A	570	22.DK4IS	99
10.DL6MBZ	561	23.SM6CQV	72
11.WA1VEC	492	24.DF7FB	60
12.DL8QP	468	25.DK9CK	25
12.DF9NW	468	26.KD4OM	9

SWLers

1. Stig Kahr	1,280
2. Kurt Wuestner	884
3. Vaclav Cesak	512
4. Werner Ludwig	465
5. F.V. Oostenbrugge	275
6. H. Ballenberger	117
7. Dick de Puyt	64

RTTY DX-PEDITION
 March 2 & 3 to VP2E-Anguilla, FS7-Fr. St. Martin, PJ7-Netherlands St. Maarten. February 22-March 5, 1982 most of the operation will be on Anguilla with several days from St. Martin. Operators will be, among others, Everett Jackson WA8CZS and Jeff Maass K8ND/VP2EV. RTTY equipment will include HAL CT2100/KB2100 communications terminal with MSG2100 programming and HAL CWR-685A Tele-reader. Information on special schedules may be obtained from Everett Jackson Jr. WA8CZS, 3085 Primrose Drive, Zanesville, OH 43701. Telephone 614-452-7971.

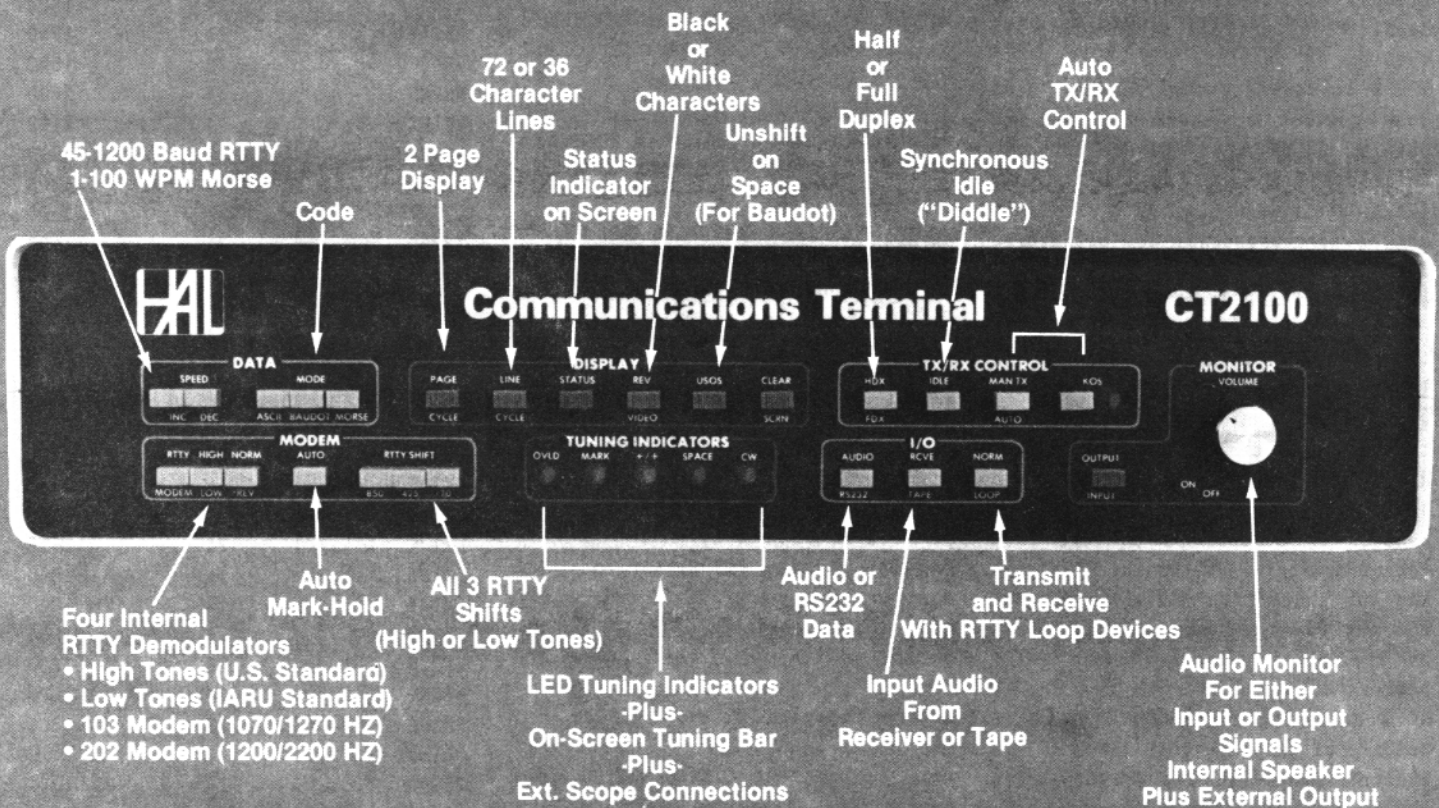
"BAND SCANNING"

Call Sign	MHZ	Time
5Z4RT	14	1700
8P6AY	14	1100
9Q5HU	14	1900
CE3CEW	21	2100
CE3VM	14	100
CN8BI	14	2000
CN8BI	14	1030
CT1AVE	14	0
CT1BBZ	14	1000
CT2AK	14	1900
CT4SP	28	1400
EA30L	14	2000
EA4YD	14	1900
EA5ANZ	28	1600
EA9KS	21	1800
EI4EH	14	1400

Call Sign	MHZ	Time
F6EGK	28	1350
FG7BG	14	1300
FY7AQ	14	100
G4BMR	28	1700
G4CTQ	14	1030
GI4AHP	21	1600
GM4JYZ	21	1900
HB9AQA	14	1600
HB9AXA	21	1740
HB9BFU	28	1500
HH2MC	14	2000
HK1BNP	14	1100
HK1BNP	14	1200
HT5JAR	14	1300
I2ILK	21	1500
I3ZNG	21	1400
ISØZPH	21	1930
JA1JDD	14	400
JA3CZY	21	100
JA7COI	21	100
KG4AH	21	1800
LA2IJ	28	1600
LU3ADT	28	2200
LX1JE	14	1000
LX1JE	14	1030
LX1JE	21	1410
LX1JT	14	1800
LX1JT	14	1000
LX2BG	28	1400
LX2LH	28	1600
OE6WK	14	1400
OX3FG	28	1600
OZ1HBY	21	1420
OZ9OU	14	1030
PAØCWI	21	1400
PAØGKO	14	1000
PJ3SF	14	1300
PP7AF	14	330
PT2BW	14	1400
PY2WT	14	300
SM3BCV	28	1430
SM4AWC	28	1500
SM7OS	21	1400
SV1DE	14	1030
T32AB	21	2100
TF3KC	14	1900
TI2AEB	14	10
TI2DO	14	200
V2AR	28	2000
V2AR	14	1200
V2AW	14	1200
VK4ALS	14	1200
XE1XA	28	1700
Y43YK	28	1700
YV5ARY	14	300
ZS1FP	28	1800

CT2100

HAL Puts MORE Behind The Buttons



CT2100 System:

- CT2100 Communications Terminal
- KB2100 Keyboard
- Video Monitor
- Printer (300Bd Serial ASCII-MPI-88G)
- RM2100 Rack Adapter
- MSG2100 2000 Character "Brag Tape" ROM

- 24 Line Display
- 2 Pages of 72 Character Lines
- or-
- 4 Pages of 36 Character Lines
- Split Screen (with KB2100)



HAL COMMUNICATIONS CORP.
Box 365
Urbana, Illinois 61801
217-367-7373

**NOW! HAL Equipment is
in stock at leading Amateur
Dealers.**

HITS & MISSES

by GEORGE

GEORGE HAMMON, WA6CQW
14215 Pecan Park Lane Space 73
El Cajon, CA 92021

CUTBACKS

A forthcoming report of the FCC commission's "program evaluation task force" will in several ways decide key issue's concerning Amateur Radio. This task force is composed of FCC members. They are reviewing all commission activities to determine what can be eliminated or cutback. A present 12% across-the-board cut is proposed.

This task force could decide that enforcement or worse still consolidation of FCC local office's to be their prime targets. Amateur Radio it appears, will get the short end. Senator Goldwater's bill S.929 would permit Amateurs to assist the FCC in exam administration and enforcement. FCC services are certain to be cut.

SAROC 1982 CONVENTION

to be held at Aladdin Hotel in Las Vegas, Nevada, 1-4 April. Advance registration \$17 per person post-marked before 1 March 1982. After that \$19 per person. Non-paying guests visiting exhibits to be issued ID badges good for admission to exhibit area. Extra drawing tickets for main drawing \$1 each. Send check or money order to SAROC, POB 14217, Las Vegas, NV 89114. SAROC Aladdin Hotel room rates are \$36 per night (plus room tax).

The gang from the RTTY JOURNAL will be there so stop and say hello.

CONVENTION

I attended the Southwestern ARRL convention in Scottsdale and sat in on the ARRL forum.

Discussion focused on more member participation at the individual and club level. I suggested we call clubs who exhibit a high degree of this participation S.T.A.R. clubs (support to Amateur Radio). I would like to hear your thoughts on this. The need for all of us to promote Amateur Radio has never been more important.

Local Radio Clubs are the main strength of Amateur Radio.

DX RECORDS

I have just completed a program to keep track of my DX records. The program is for the Apple Computer. I am writing it up for the JOURNAL. The program is simple and requires 48K of memory and a one disk drive.

DUSTY DUNN

W8CQ, Dusty Dunn, former editor, publisher of the RTTY JOURNAL is not enjoying good health. I hope the RTTY gang will drop him a line at 1021 Marywood Drive, Royal Oak, MI 48067.

RTTY ART CONTEST

The Chicago RTTY Repeater Society has announced its first RTTY Art Contest which will run until February 28, 1982. The contest is open to all radio Amateurs and their families, and entries must be original and not have been transmitted before November 1, 1981. Entrants must supply one unspliced 5 level tape and three prints for each entry submitted. There is no limit on running time, and a maximum of 72 characters per line may be used. Entries must be compatible with machines which downshift on space. At least 3 functions must be used to terminate each line-carriage return, line feed, letters. Winner will be awarded a model 33 ASR with modem. Send entries to Howie, WA9KEK, 1752 North Austin Avenue, Chicago, IL 60639.

I will close my column for the month. I hope the holidays were enjoyable for all and now lets roll up our sleeves for the New Year. How about an article for the JOURNAL??? So long for now, George, WA6CQW....



ARGONNE AMATEUR RADIO CLUB EXHIBIT
Richard W. Doering WA6CFM
1037 Cornish Drive
San Diego, CA 92107

The photos included herein were taken by Richard at an open house at Argonne National Laboratory, Argonne, Illinois (near Chicago).

On this months cover, Bill Coons, KD9I (on left) and Howie Olson, WA9KEK look over the RTTY equipment at the Argonne Amateur Radio Station, W9QVE. The station includes HF and VHF transmitters and receivers in addition to a Flesher TU-170, Model 28, and model 33. Howie is the President of the C.A.R.R.S. (Chicago Area Radioteletype Repeater System) repeater on 145.31 MHz. Bill is the Secretary.

The other pictures are captioned as follows:

Picture #1

Howie Olson, WA9KEK "hams it up" on the green keys. Howie and others regularly entertain Chicago area RTTY buffs Friday evenings on 145.31 MHz, by sending pictures on request, over the air.

Look elsewhere in this issue for contest rules for the CARRS RTTY Art Contest Rules for their first RTTY art contest.

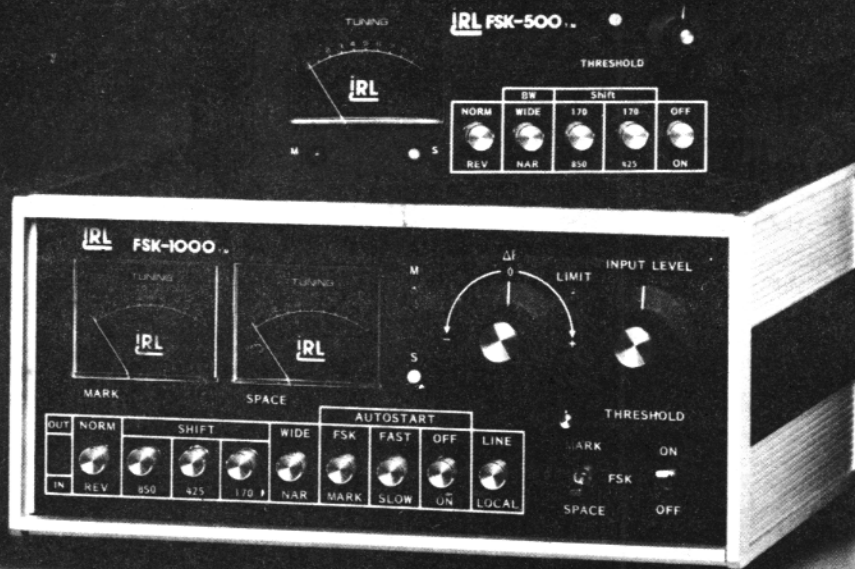
Picture #2

RTTY artwork being shown by Bill Karaker, W9AVE to an exhibit visitor. The pictures were transmitted by Dale Travis, AG9H on 2 meters FM using 100 WPM ASCII, to the Argonne Amateur Radio Club display in the Argonne National Laboratory Cafeteria. The receiving setup for the 12 mile path included an HW-2036A, Flesher TU-170, and a Model 33.

Picture #3

Bill Coons, KD9I, gets a laugh over the "toilet seat" paper tape being punched on W9QVE's Model 28.

A RTTY DXers' Dream



IRL
T.M.

700 TAYLOR RD.
COLUMBUS, OHIO 43230
(614) 864-2464

VISA OR MASTER CHARGE ACCEPTED
IMMEDIATE DELIVERY

At IRL, we believe that the RTTY ham should be limited by his skill as an operator—not by his demodulator. The FSK-1000 and FSK-500 were conceived and specifically engineered for use on the crowded HF ham bands, to give the serious DXer, contest operator, or MARS station a competitive edge when the QRM gets rough.

CHECK THESE OUTSTANDING FEATURES!

FSK 1000 TERMINAL UNIT

- Unparalleled selectivity achieved with sophisticated true limiterless design
- Ultra sharp active filters
- Tuneable shift (80-1000hz)
- Selectable bandwidths (100/55hz)
- Three mode autostart
- Positive dynamic range indicator
- Extruded aluminum enclosure
- Rugged commercial quality
- Adjustable "mark hold"
- Keyboard activated transmit
- Optional AFSK keyer
- Internal loop supply
- RS232 or TTL
- Full one year warranty

FSK 500 TERMINAL UNIT

- Superior selectivity
- Selectable bandwidths
- All standard shifts
- 3 shift AFSK keyer included
- Narrow shift I.D. included
- Preselector included for QRM suppression
- Economically priced
- Fully wired and tested
- Compact size
- RS232 or TTL
- Full one year warranty
- Optional loop supply

Both the FSK-1000 and FSK-500 are easily interfaced to your APPLE, TRS and HEATH computer.

Call for further details.

VHF COLUMN

by JOHN

JOHN CUNNINGHAM, WA9WJG
POST OFFICE BOX RY
PERRYSVILLE, IN 47974

Greetings from "The Indiana Iceberg". The wx has been terrible here too. My activities on the Wabash River have consisted of an occasional run along the bank in the Jeep or just looking out the window at the ice floating downstream. Sure is good wx for radio'n.

Have you seen any of the national weather bureau reports on Amateur RTTY? The guys on the Champaign-Urbana, Illinois repeater can call up the latest wx report on K9GWT's MSO, real nice!

Received a letter from Jerry, WB3FSN. He tells about a RTTY aeronautical mobile. It seems that Jerry's a/s system was on 146.58, he was in the shack working on a pix when he heard the tones. The a/s system begins to copy, "RYRYRYRY de WB3CWN--George, Aeronauticle mobile--Pilot Jeff Fichter--RTTY operator, George, WB3CWN--somewhere in Chester county, Pennsylvania--January 2, 1982--Happy New Year to all".

George did this pre-recording the message on his tape recorder and then playing it into his two meter rig. After printing George's message WB3FSN, Jerry, and another friend, WA3DLH, Bill, in Newark, Delaware contacted George on fone.

Jerry says that the group there around West Chester, PA. monitors 146.58 simplex and will be glad to chat with you even if you are "aeronautical RTTY mobile".

Jerry's P.S. reads, "Bet HAL wishes that George had that new portable model in the plane. Would have made a great advertisement. HI HI Trying to talk him into it."

By the way, Jerry runs the DS3100, ST-6000 and an assortment of mechanical stuff.

Very interesting letter, Jerry, thanks a lot. I sure hope to receive more like it.

Another letter comes from Dave, W9VY, in Peoria, Illinois. Dave remarks that he does not believe that there is RTTY on 2 meters. He says he monitored the Gridley repeater for a week and heard nothing. He feels that someone lied to him, had a better antenna system than his or else things have changed drastically since they told him that there was RTTY on 2 meters.

Well Dave, it all too often seems that way, but whatever you do... do not give up. Some days you catch one guy on there and then on another day you can't get off. That's when the XYL says, "Good grief, doesn't that thing ever stop." Keep in mind Dave, and everyone else too, that if everybody is listening...nobody hears anything. Nuff said?

Looking to hear from all of you--
-- 73 -- de John, WA9WJG.

FROM THE EDITOR...Sorry to have changed your callsign in last months' issue of the JOURNAL John. The finger slipped I guess. WA9WJG de Dee, N6ELP. Hey OM/YL/XYL how about giving WA9WJG a hand getting information on nets, repeaters, people etc. on the RTTY bands? You might send a copy of your clubs bulletin/newsletter along to him also.

HAM HELPS

From Charles Svoboda, WOCR, POB 218, Chapman, KS 67431. "Before Bomark, Incorporated, of Florida closed up, I got one of their ST5A boards and parts. I got the diagram also but before I got to put it together I lost it. Do you know where I could get a diagram and instructions to put it together? I would like to get in touch with someone who has them."

Can anyone help WOCR??

NEW PRODUCT ANNOUNCEMENT

Macrotronics has announced the introduction of Code Class, a Morse Code Tutorial for the IRS-80 Model I or Model III microcomputer. Code Class is a machine language program written by licensed Hams who understand the problems of learning Morse Code. It is simple to use and exceptionally effective. Unlike the traditional Morse tapes and records, Code Class is interactive and presents code in a variety of formats in non-repetitive sequences at user adjustable speeds.

For the newcomer, there is a code tutorial that assumes no previous knowledge of Morse Code.

The code practice portion of Code Class is designed to increase your speed and accuracy in copying Morse Code.

Improves your fist. With Code Class it is easy to learn to send clean, correct Morse Code. When coupled with a Macrotronics Ham interface, listed below, Code Class will copy handsent code.

Requires a IRS-80 Model I (16K, level II BASIC) or Model III (16K, model III BASIC), To receive Morse Code add a Morse code key and a Macrotronics Ham interface (M80, M83, CM80, CM83, TM80, TM83 or TERMINALL). Add any audio amplifier for super sound effects.

Specify cassette (\$29) or disk (\$39) Model I or Model III version.

FROM James Henry McAdams, W4YZ... Marvin Bernstein, W2PAT, 1137 Hope Rd, Asbury Park, NJ 07712 sells a set of 5 chips for \$16.50 that will convert ASCII to Baudot and the reverse, it takes also a xstr and restr or two conversion is based on a 8035 chip. A board is available from Bill Penner 333 River Rd., Naperville, IN (IL???) 60540 for \$6.00

I just got me a Sinclair ZX81 and they are going like hotcakes here in Alabama.

continued on page 15



Expand your station versatility....

DRAKE [®] **Theta 7000E**
Microprocessor-Controlled
Communications
Terminal

The perfect addition to any amateur radio installation! Complete, automatic send/receive of Morse code (cw) Baudot code (RTTY) and ASCII code (RTTY). Works with any video monitor.



New versatility for the old bear in your station...

Model 7000 Drake Theta 7000E Terminal
 Model 7009 Drake TR-930 Video Monitor

7-Channel Battery Back-Up Memory, the Theta 7000E has seven keyboard-selectable, non-volatile, random access memory channels each of which can hold 64 characters. Data in these memories is alterable at any time and is retained when power is removed. Messages in these memory channels can be repeated 1 to 9 times via keyboard command. All channels may be daisy-chained for continuous read-out. Channel number in use is indicated on display.

Wide Range of Transmitting and Receiving Speeds, 5 to 50 wpm in Cw with autotrack on receive. Standard RTTY speeds of 60, 67, 75, and 100 wpm Baudot code and 110, 150, 200, and 300 Baud ASCII code.

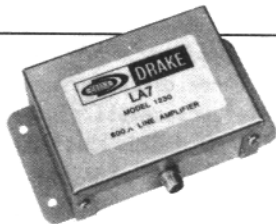
Self Contained Demodulator, three-step shift selects either 170 Hz, 425 Hz or 850 Hz shift with manual fine tune control of space channel for odd shifts. High/low tone pair select. Mark only or space only copy capability for selective fading.

CONVENIENT KEYBOARD FEATURES, automatic keyboard-operated transmit, (KOX) or manual keyboard transmit. **Unshift on space**, reverts to LETTERS case after reception of each space character in Baudot code. **CR/LF is automatically inserted** every 60, 72 or 80 characters while transmitting. **Cw identification**, in RTTY mode. **Echo function**, prerecorded cassette tapes can be read and transmitted. **Test messages**, "RY" and "QBF". **Transmit word mode**, characters can be transmitted in word groupings.

Crystal Controlled AFSK Modulator:

High Tone Pairs	Shift	170 Hz	425 Hz	850 Hz
	Mark	2125	2125	2125
	Space	2295	2550	2975
Low Tone Pairs	Shift	170 Hz	425 Hz	850 Hz
	Mark	1275	1275	1275
	Space	1445	1700	2125

- **Printer Interface for Hard Copy**, all modes for parallel ASCII printers. Loop keyer for conventional teleprinters.
- **Composite Video Output**, for any standard video monitor.
- **Kansas City Standard AFSK Output**, KCS tone pair for ASCII.
- **Large Capacity Display Memory**, two page display memory contains 32 X 16 lines per page.
- **Split-Screen**, with a keyboard command, the display can be divided in two; the upper half for transmit and the lower half for receive. Messages can be composed while receiving.
- **Buffer Memory**, 53 character type-ahead keyboard buffer.
- **Word Wrap-Around**, in receive mode, word wrap-around prevents the last word on a line from becoming split in two. Moves whole word to next line.
- **Automatic Letters Code Insertion**, if desired, LETTERS (diddle) code can be transmitted continuously in a pause of transmitting from the keyboard.
- **Audio Monitor**, a built-in audio monitor circuit with automatic transmit/receive switching enables checking of the transmit/receive tones.
- **Transmitter Keying Circuitry**, keys either grid block, cathode keyed, or solid-state transmitters.
- **Power Requirement**, The Theta 7000E requires only 13.6 Vdc @ 1 amp. Plugs into 13.6 Vdc accessory jack on PS7 or PS75 power supplies.
- **Effective Packaging for RFI Protection**, well designed metal cabinet and protective circuits prevent RFI.
- **Terminal Size**: 15.8" W x 11.8" D x 4.7" H (40 x 30 x 12 cm)
- **Weight**: 11 lbs (5 kg)
- **Monitor Size**: 8.7" W x 9.8" D x 8.9" H (22.1 x 24.1 x 22.6 cm)
- **Weight**: 11 lbs (5 kg)



Model 1230 **LA7 Line Amplifier**

Line output, input levels as low as 15 mV rms (47 kilohm) will result in an output of 1 mW nominal into a 600 ohm balanced line. Output level adjustable by internal pre-set level control. Interfaces low level audio to RTTY

terminal unit or phone line that requires a 600 ohm balanced/unbalanced input. One 36" phono to phono cable supplied. • **Size**: 4.5" L x 1.3" H x 2.5" W (11.4 x 3.3 x 6.4 cm). • **Weight**: .3 lbs. (.14 kg).

Specifications, availability and prices subject to change without notice or obligation.

R. L. DRAKE COMPANY



540 Richard St., Miamisburg, Ohio 45342, USA
 Phone: (513) 866-2421 • Telex: 288-017

CLASSIFIED ADS

30 WORDS \$3.00, ADDITIONAL WORDS 5¢ EACH CASH WITH COPY--DEADLINE 1st of month for following month.

ENGINEERS: RETIRED from Industry, I now operate a search firm assisting professionals secure positions with producers of military and commercial electronics systems. I need Engineers with analog and digital design experience; also QC, Manufacturing and Test Engineers. No fee. Carl Steavenson, P.E., K6WZ, 13638 Sproule, Sylmar CA. 91342. 213-362-1306.

SALE! SALE! SALE! SALE! SALE! SALE! Heavily inked UPI ribbons, fits all Teletype machines \$6.50 doz; Perforator tape 11/16" wide x 8" diameter, case of 40 rolls \$19.50; strip printer tape 3/8" wide, white, un gummed, box of 25 rolls \$12; roll paper white or canary 5" dia, case of 12 rolls \$29 or \$4 per roll; Model 28 TD, self contained, stand alone \$99; Model 28 stand alone typing reperforator with 3 speed gearshift \$120; Single speed \$99; Model 28 TD self-contained, stand alone with 3 speed gearshift \$225; Model 28 auxillary reperf type LARP, complete with motor, base & mounting studs to fit inside model 28 ASR cabinet above TD \$65; Gears: Model 28 ASR 100 WPM Printer \$9.50, TD \$10.50. Also available everything you need from Model 14 to Model 35 machines and parts. All prices are FOB Brooklyn, NY. Call for price. Atlantic Surplus Sales, 3730 Nautilus Ave, Brooklyn, NY 11224. 212-372-0349.

WORLD PRESS RADIOTELETYPE STATION lists. Over 50 different worldwide press services contained in 3 lists. By time, by frequencies and ITU combination list. All transmitting in English. 24 hours. Hundreds of confidential and fascinating RTTY news stations in these up to date lists. Utilize your present equipment. Book with lists \$5.95 plus \$.50 shipping. Universal Electronics, 1280 Aida Dr., Reynoldsburg, OH 43068.

WANTED: 425 Hz discriminator for my ST-6 TU. Clauge Sweger, W5SHC, Box 1842, Ft. Stockton, TX 79735.

SEE IT PLAYING BEFORE PAYING. MINT 28ASR \$300. ST-6 AK-1 UT-4 \$400. Take both get SB-610 scope. Another 28 ASR needs rewiring \$200. Drake L4B \$750. K2JW 609-234-3255 evenings.

WAREHOUSE SALE: Must clear out Teletype machines immediately at fantastic savings. Have everything from a Model 14 through 35. Large discounts. List available or call ED at Atlantic Surplus Sales, 3730 Nautilus Ave, Brooklyn, NY 11224. Tel. 212-372-0349.

WANTED SPARE PARTS FOR Teletype Corp, Kleinschmidt Corp. and Mite Corp. machines. Please send list. Phil Rickson, W4LNW, POB 70, Morrisonville NY 12962.

RTTY FOR SALE: 35 KSR (2) \$295 ea., 28 RO compact/gearshift (2) \$275 ea.; 28 keyboard typing reperf (3) \$195 ea.; 34ASR (28ASR in 35ASR cabinet (2) \$495 ea., 28 LXD stand-alone TD (10), 100 WPM \$95 ea., 60 WPM \$117 ea., Prices less shipping and packing Send SASE for 5-page list and prices. Lawrence R. Pflieger, K9WJB, 2600 S. 14th St., St. Cloud, MN 56301. Phone 612-255-9794.

FOR SALE: 7th edition of the LIST OF RTTY STATIONS IN FREQUENCY ORDER, now contains 2067 frequencies monitored in 1980-81 of commercial stations like press, aeronautical, weather, telex, military, diplo, maritime etc, on shortwave. Schedules of 88 news agencies on 741 frequencies are included, plus an alphabetical index to these press service stations. This offset printed list is airmailed to you for \$17.00 (check or cash) from Joerg Klingenfuss, Panoramstrasse 81, D-7400 Tuebingen, West Germany.

QUALITY RTTY kits and PC boards available for all applications. The Rack Line Boards are all 6½ x 4½ with edge connector mounting for easy servicing. Choose from the following kits and boards. 1. UT4D Uart speed converter kit \$109.95 board alone \$22.95. 2. UT2 Regen Repeater kit \$39.95, board alone \$13.95. (3) TU Loop Supply kit \$31.99. (4) TU LV Supply kit \$34.99. (5) Complete TU Supply kit \$56.99. Board alone \$8.95. (6) XB6 clock kit for UART use \$29.90. Board alone \$8.95. (8) Crystal controlled AFSK kit \$29.95. Board alone \$8.95. Other kits available but not in size format as above. (9) AFSK

tone mixer for CWID kit (Nov. 1979 JOURNAL) \$10.95. Board alone \$3.50. (10) Single voltage power supply kit (specify voltage - or +) \$13.95 Board alone \$4.75 (11) RTTY ID Generator kit (please supply what you wish coded up to 32 positions) \$24.95. Board alone same size as the ST-6 Boards. Sale priced \$2.50. All orders add \$2.00 for shipping & handling. Catalog of over 1000 electronic parts available for stamp. Visa/MC accepted Daytapro Electronics, 3029 N. Wilshire Ln, Arlington Hts, IL 60004. Phone evenings 312-870-0555.

TELETYPE EQUIPMENT AND SUPPLIES. Model 28ASR \$150; Model 28 RO \$125; Model 28 stand-alone TD (LXD) \$75; Model 28 R-T (2 units and cabinet) \$250; Model 28 3-speed compact RO \$200. Roll paper (case of 12) \$25; Fanfold \$14/box; ribbons \$7.50/doz; reperf tape 11/16 x 8 \$18/40 rolls. Wanted: TD gears for 28ASR 60 speed (158005 and 158006); Manuals for Teletype equipment. Wanted for collection: MXD 7.42 UC on 60; 28 Mark I KSR and ROTR manuals. New 1982 equipment list now available with many reduced prices. Please include SASE. Will consider trade for postage stamp collections or accumulations—send brief description. Write now! Poul Andersen, 115 Boyken Rd, Rochester, MI 48063. 313-652-3060.

WORLD PRESS SERVICES FREQUENCIES LIST AND MANUAL. A comprehensive manual completely covering the field of Radioteletype news monitoring—contains all needed information on antennas, receivers, terminal units, monitors, how to receive, frequencies and times of transmission for most world radioteletype news and press services. Monitoring these news sources is fascinating shortwave listening. All listed stations transmit in English. Contains three different master lists of times of transmission, frequencies used plus the ITU list of over 50 different news services in all parts of the world. Universal Electronics 1280 Aida Dr. #J, Reynoldsburg, 43068

LIST OF WORLDWIDE RADIOTELETYPE STATIONS IN FREQUENCY ORDER (7th edition)

Over 2,000 frequencies of stations which have been logged in the last part of 1981. Frequency, call sign, name of the station, ITU country symbol, times of reception and details are included. All types of stations are listed, including schedules of 82 news agency stations on 641 frequencies. 178 special RTTY operation abbreviations are listed. A list of 208 GENTEX destination indicators is attached. Covers all RTTY stations from 3 MHz to 30 MHz, air, metro, government, military, diplomatic services. The only accurate RTTY list in existence. A must for the serious RTTY enthusiast. Universal Electronics, Inc. 1280 Aida Dr, #J, Reynoldsburg, OH 43068.

BARGAIN: Model 33 ASR \$200; 33 KSR \$150; both very good. Pick-up only, WINJN, Danvers. MA (617) 774-3767.

RTTY AUTOSTART TRANSMITTER. HEATH DX-60B. 90 watts on 80-10 meters. Includes external super stable XT-4 (2 HZ) FSK crystal oscillator with switchable mark frequencies of 3602.5 KHZ, 3612.5 KHZ, 3627.5 KHZ and 3637.5 KHZ using the existing HA type crystals. XT-4 plugs into accessory socket on DX-60B. DX-60B includes built-in voltage regulator and coax antenna relay. This package includes DX-60B manual and a complete set of new spare tubes (including 6146B). \$85 plus shipping. W6RLL-Joe Young, 16808 W. Goodvale Rd, Canyon Country, CA 91351. (805) 251-2135.

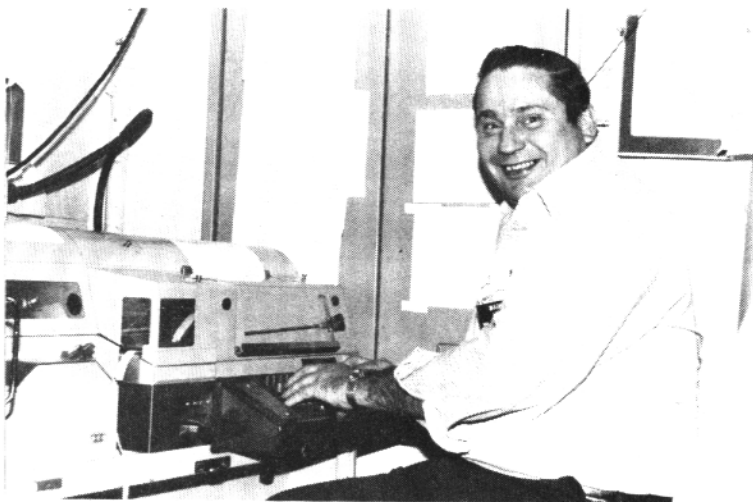
FOR SALE: KENWOOD VFO-820-New \$125, 4-1000A tube \$50, ST-6 TU excellent condition \$250 (crystal tones), Heath IG-18 sine-square wave generator \$65, Johnson low pass (1KW) filter \$15. Vibroplex key (bug) good condition \$10 (with padded case). W.L. Brown, K5FL, 425 Magnolia St, Denton, TX 76201. (817)-382-0351.

TELETYPE MODEL 28RO including matching table, loop power supply, 10 rolls paper, extra ribbons, motorized paper winder, paper rack, factory manuals, new platen, uninstalled auto LF/CR mod, felt vibration pad, friction feed, 60, 67, 100 WPM shift. Best offer over \$150 accepted. Frate collect. Jack Mathias, W9FMW, 721 S. Meadow Rd, Evansville, IN 47715. A/C 812-477-2516 after 1900 CST.

MODEL 28 (free standing) reperfs with keyboards. Use as is or on line with your set \$75 delivered. Loads of Teletype machines and accessories. SASE for list. C.B.Goodman, 5454 South Shore, Chicago, IL 60015. 312-753-8342.

TELETYPE PARTS WANTED. Any quantity, any models, highest prices paid. 201-464-5310, Van W2DLT, Box 217, Berkeley Heights, NJ 07922.

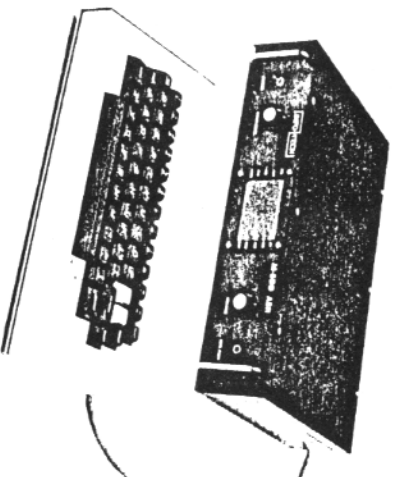
Suscribe to Ham Radio Magazine now. \$16.50 per year. Greenville, NH 03048



A TRUE STATE-OF-THE-ART COMMUNICATIONS TERMINAL!

NEW M-500 ASR

from
INFO-TECH



\$1475.00
(with 12" Monitor)
\$180.00
MEMORY EXPANSION BOARD
(10K of Memory)

(contains mailbox systems)

For use by amateur radio operators in the transmission and reception of RTTY (ASCII & Baudot) and Morse code. Microprocessor controlled with 20K of memory (8K ROM, 8K RAM, 4K video RAM).

User programmable messages. Set-Cal. WPU, mailbox, real time clock, large running buffers for printers, basic word processing for on-screen editing, full and half duplex, cassette tape interface, split screen formats, ASCII or Baudot printer outputs, auto-start, push to talk, accessory switches, provisions for battery back-up, many other features.

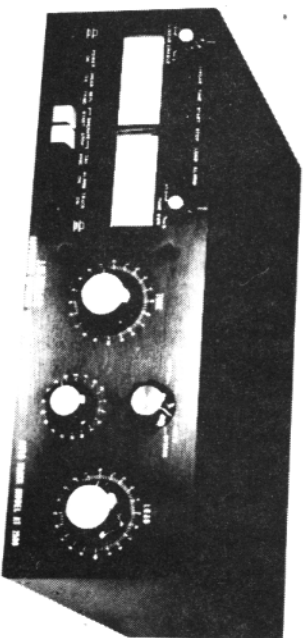
The M-500 consists of three parts:

1. KEYBOARD. Connected to mainframe by 5-ft. umbilical cord for maximum operating flexibility. Entire system keyboard controlled.
2. MAIN FRAME. Houses 95% of the electronics; all I/O jacks, power supplies, modulator/demodulators. Metal frame cabinet is table top or rack mounted.
3. 12" VIDEO MONITOR. High quality to insure undistorted video, provide flexibility for operating position placement.

Order direct or from these dealers:

Carlin 5640 W. 116th Ave. Miami, Florida 33173 (305) 575-2633	Delta Amateur Radio Supply 217 48th St. Madison, WI 53703 (608) 241-8727	Gift Associates, Inc. 52 Park Ave. New Jersey 07056 (201) 391-7887	N & B Distributing 7201 NW 72nd St. Miami, Florida 33148 (305) 592-9851; 783-8170
C. J. Pugh 14903 Bachman Ave. White Rock, B.C., Canada V8B1N8 (604) 536-3058	Electronic Equipment Bank 516 Mill St. Vienna, Virginia 22180 (703) 598-3350	Radio World Terminal Building Orlando County Airport Orlando, Florida 32931 (305) 783-3624	1974 J. W. Miller Radio 1424 J. W. Miller Rd. Chaparral, Florida 33516 (813) 535-1416
INFO-TECH ELECTRONIC EQUIPMENT	Ohio Radio Center 3343 Ohio Blvd. St. Louis, Missouri 63132 (314) 738-0470	Universal Amateur Radio 1280 Acad Dr. Reynoldsburg, Ohio 43068 (614) 866-4287	
Manufactured by: DIGITAL ELECTRONIC SYSTEMS, INC. 1833 Victoria Court • Englewood, Florida 33533 813-474-5118	Special Communications 606 Cocoa Beach Blvd. Cocoa Beach, Florida 32931 (305) 783-3624	Michigan Radio 38270 Mast Mt. Clemens, Michigan 48045 (313) 469-4658	

New Automatic Antenna Tuner Auto-Track AT 2500



Designed and Built by J. W. Miller Div.

Check these state-of-the-art specifications

- Power Capability: 2500 W PEP
 - Frequency Range: Continuous 3.0 to 30 MHz (including WARC Bands).
 - Impedance Matching: 10 ohms to 300 ohms to 50 ohms resistive.
 - Direct Reading SWR Meter: 1:1 to infinity.
 - Direct Reading Power Meter: Two meter scales from 0 W to 250 W and 0 W to 2500 W. Front panel switch selects FWD or Reflected Power (illuminated panel meters).
 - Power meter displays RMS with continuous carrier and automatically displays PEAK when driven with SSB signal.
 - Average "Automatic" tune-up time: 15 seconds or less.
 - Tune-up time not affected by power level; can be as low as 1 W (5-10 W preferred).
 - Power requirements are 115/230 VAC 50-60 Hz, 10 W operating/5 W standby, or 13.5 VDC, 1 A operating/5A standby.
 - Antenna tuner packaged in cabinet 17" W x 5 3/4" H x 14" D (Front panel handles or rack mount optional at extra cost.)
- Write for literature.
- Specifications subject to change without notice.

Dealer
Inquiries
Invited



J. W. Miller Division
BELL INDUSTRIES

19070 REYES AVE. ■ P.O. BOX 5825
COMPTON, CALIFORNIA 90224

continued from page 10

Would like to correspond with anyone who has one and is using it on RATT.

The magazines to go with it are "SYNCH" and "SYNTAX" and there is a newspaper (reminds me a good bit of the RTTY JOURNAL) that Marty Irons, K2MI, 46 Magic Circle Drive, Goshen, NY 10924 prints. He is writing it only for Hams and ZX80 & ZX81 owners. He is not charging for it but asks for donations to cover costs. (I sent him \$5.00--he notes that he returned a \$10 donation as too much). I also would like also like to see home made 16K, 32K or 48K RAM setups for the Sinclair.(they sell them, of course, and the 16K schematic has been published.) And of course, any other peripheals and in/output circuit."

Thanks for all the letters for help and information. When space permits we shall continue to print information about products, new and old and letters requesting information regarding RTTY and related subjects. Send to the RTTY JOURNAL office, 1155 Arden Drive, Encinitas, CA 92024

One more news release that we would like to get into the JOURNAL this month is from the United States Navy regarding Armed Forces Day Communications Test. I do hope that all contests that include or are exclusively RTTY will have the rules and results of contests sent to the JOURNAL DX editor or this office, preferably to both.

This year's observance of Armed Forces Day marks the 33rd anniversary of communications tests between the Amateur radio fraternity and military communication systems. Since 1950, this event has been scheduled during the month of May and has emphasized a continuing climate of mutual assistance and warm esteem. Saturday, 15 May 1982 has been designated as the 33rd Annual Armed Forces Day.

A featured highlight of the nationwide celebration will be the traditional military-to-Amateur cross band communication tests. These tests give Amateur operators an opportunity to demonstrate their individual technical skills and to receive recognition from the Secretary of Defense or the appropriate military radio station for their proven expertise.

The proceedings will include operations in continuous wave (CW), single sideband voice (SSB), radioteletype (RTTY) and slow scan television (SSTV).

Special commemorative QSL cards will be awarded to Amateurs achieving a verified two-way radio contact with any of the participating military radio stations. Those who receive and accurately copy the Armed Forces Day CW and/or RTTY message from the Secretary of Defense will receive a special commemorative certificate from the Secretary. Interception by short wave listeners (SWL) is not acknowledged by QSL cards, however, anyone can qualify for a certificate by copying the Secretary's message.

CROSSBANDS RADIO CONTACTS - The military-to-Amateur crossband operations will be conducted from 15/1300 UTC (Universal Time Coordinated) to 16/-245 UTC May 1982. Military stations will transmit on selected military frequencies and listen for Amateur stations on those portions of the Amateur bands, indicated below. The military operators will specify the particular frequency of the Amateur band to which he/she is listening. Duration of the contact should be limited to 3 minutes.

STATION-NAV HQ Navy-Marine Corps MARS Radio Station, Cheltenham, MD

Military Frequency (MF) 7385 KHz on RTTY, Amateur Band (AB) 7090-7100 KHz
13975.5KHz (MF) on SSTV 14225-14250 KHz.

STATION NMH-U.S. Coast Guard Radio Station, Alexandria, VA

(MF) 4040 KHz on CW (AB) 3500-3650KHz
(MF) 7346.5 KHz on LSB (AB) 7150-7300 KHz.

(MF) 14440 KHz on RTTY (AB) 14080-14100 KHz.

(MF) 20937.5 KHz on USB (AB) 21270-21450 KHz.

STATION NPG - U.S. Naval Comm. Station, Stockton, California

(MF) 4008.5 KHz on LSB (AB) 3800-4000 KHz.

(MF) 4010 KHz on CW (AB) 3650-3750KHz

(MF) 6970 KHz on CW (AB) 7025-7150KHz

(MF) 7301.5 KHz on LSB (AB) 7250-7300 KHz

(MF) 7365 KHz on CW (AB) 7025-7150KHz

(MF) 13827.5 KHz on RTTY (AB) 14080-14100 KHz

(MF) 13927.5 KHz on CW (AB) 14025-14075 KHz

(MF) 14470 KHz on USB (AB) 14200-14350 KHz.

(MF) 20950 KHz on CW (AB) 21000-21200 KHz.

(MF) 20998.5 on USB (AB) 21360-21450 KHz.

STATION NPL- U.S. Naval Comm. Station San Diego, California

(MF) 7380 KHz on RTTY (AB) 7090-7100 KHz.

(MF) 14385 KHz on SSTV (AB) 14225-14250 KHz.

Note- SSTV from NPL will run from 1600-2400 UTC 15, May 1982.

STATION- NZJ Marine Corps Air Station El Toro, California

(MF) 7375 KHz on RTTY 7090-7100 KHz

(MF) 14480 KHz on USB (AB) 14275-14350 KHz.

STATION AIR-2045th Comm. Group, Andrews Air Force Air Base, Washington, D.C.

(MF) 4025 KHz on LSB (AB) 3800-4000 KHz.

(MF) 6995.5 KHz on CW (AB) 7025-7150 KHz.

(MF) 7313.5 KHz on LSB (AB) 7225-7300 KHz.

(MF) 13997.5 KHz on CW (AB) 14025-14075 KHz.

(MF) 14390.5 KHz on USB (AB) 14275-14350 KHz.

(NO RTTY FROM WASHINGTON D.C.????)

STATION WAR- HQ U.S.Army, Washington, D.C.

(MF) 4018.5 KHz on LSB (AB) 3775-4000 KHz.

(MF) 6997.5 KHz on CW (AB) 7000-7150 KHz.

(MF) 14403.5 KHz (see operating schedule below.)

(MF) 20995.5 KHz on USB (AB) 21270-21450 KHz.

14403.5 operating schedule-
ON RTTY AT 1300, 1500, 1900, 2100, 0100, 0300 UTC on (AB) 140-14100 KHz.
on CW at 1500, 1700, 2100, 2300 UTC on (AB) 14025-14075 KHz.
on USB at 1700, 1900, 2300, 0100 UTC, on (AB) 14200-14350 KHz.

CW RECEIVING TEST. The "CW" receiving test will be conducted at 25 words per minute. The broadcast will be a special Armed Forces Day message from the Secretary of Defense to any Amateur or SWL operator desiring to participate. A 10 minute call for tuning purposes will begin at 16/0300 UTC. The Secretary's message will be transmitted 16/0310 UTC from the

continued on page 2.

MPC-1000R BY DOVETRON

MULTIPATH CORRECTION, IN-BAND DIVERSITY, SIGNAL REGENERATION,
UP-DOWN SPEED CONVERSION, 200 CHARACTER FIFO MEMORY,
KEYBOARD-CONTROLLED WORD CORRECTION & DIGITAL AUTOSTART



THE MPC-1000R REGENERATIVE RTTY TERMINAL UNIT

The DOVETRON MPC-1000R is a complete Transmit-Receive modem designed for optimum radio teleprinter communications on land, sea and in the air.

Standard features include a high level loop supply and keyer (neutral or polar), EIA and MIL FSK outputs, a phase-continuous AFSK Tone Keyer with three selectable Mark - Space - Shift tone pairs, Mark, FSK & Digital Autostart, Automatic Markhold, an internal RY Generator for terminal unit Self-Test and circuit adjustment, and a Signal Loss Alarm circuit.

The MPC Series is available in six different models to meet your exact requirements.

Complete specifications are
available on your request,
or call 213-682-3705.



627 Fremont Avenue
South Pasadena,
California 91030, U.S.A.

RTTY Journal

PO BOX RY

Cardiff by the Sea, CA. 92007

SECOND CLASS PERMIT PAID
AT ENCINITAS, CA 92024