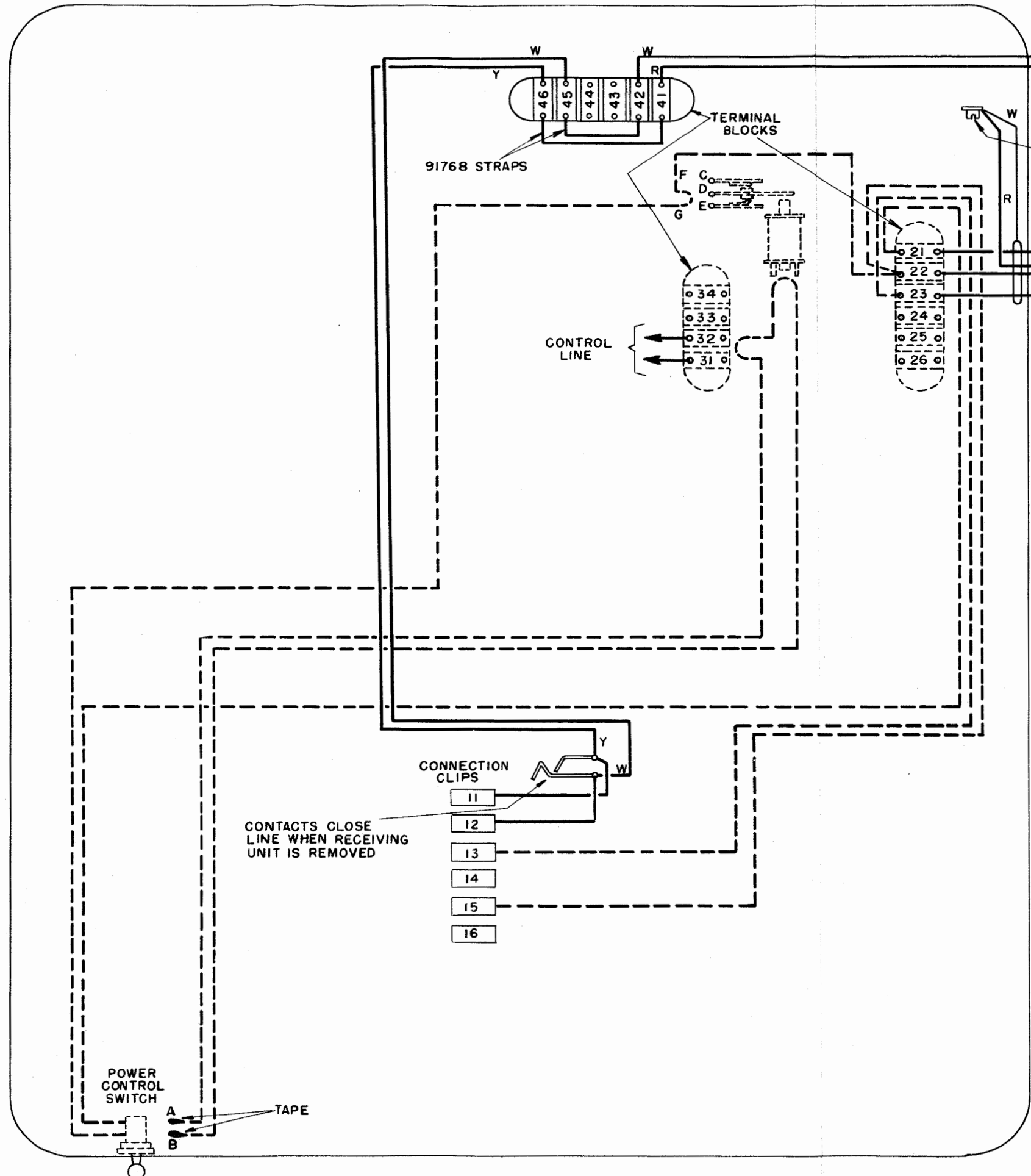


REVISIONS		
(C)	9-7-44	35535
(D)	12-21-45	39405
(E)	12-15-49	48714



RECEIVING LINE
89472 CORD WITH PLUG
(RED SHELL)

GROUND TERMINAL

110 V. A.C.
95052 CORD WITH CAP

PLUG SHOWN AS VIEWED
FROM PRONG END.

NOTES:

BASE WIRING SHOWN WITHOUT CONTROL RELAY. WHEN CONTROL RELAY IS USED REMOVE WIRES CONNECTED TO POWER CONTROL SWITCH. SPLICE & TAPE.

REMOVE TAPE FROM WIRES MARKED A & B, CONNECT TO POWER CONTROL SWITCH.

CUT LOOP AT CONTROL RELAY AND CONNECT TO CONTROL RELAY TERMINALS.

CUT LOOP AT 4 TERMINAL BLOCK AND CONNECT WIRES TO TERMINALS 31 & 32.

CUT LOOP AT CONTROL RELAY CONTACTS. CONNECT "F" TO "D" THEN FOR BREAK OPER. CONNECT "G" TO "E" FOR MAKE OPER. CONNECT "G" TO "C".

ASSOCIATED CABLES

- COLOR CODED
- - - ALL BLACK WIRES

106884 CABLE

FB 208 IS NOT EQUIPPED WITH AN 89472 LINE CORD AND A 95052 POWER CORD.

CONTACTS CLOSE
LINE WHEN RECEIVING
UNIT IS REMOVED

WIRE COLOR CODE	
CODE	SOLID COLOR OR TRACER IN WHITE WIRE
BK	BLACK
BR	BROWN
R	RED
W	WHITE
G	GREEN
Y	YELLOW

WD-2231-E
5-20-43

WIRING DIAGRAM
FOR
14 TYPE
RECEIVING-ONLY
BASE
FB 43,203,208
MOTOR GOV. ARR. 15

DRAWN J.J.F.	APPROVED
ENGRD. S.J.	R.T. M.T.G.

TELETYPE CORP.