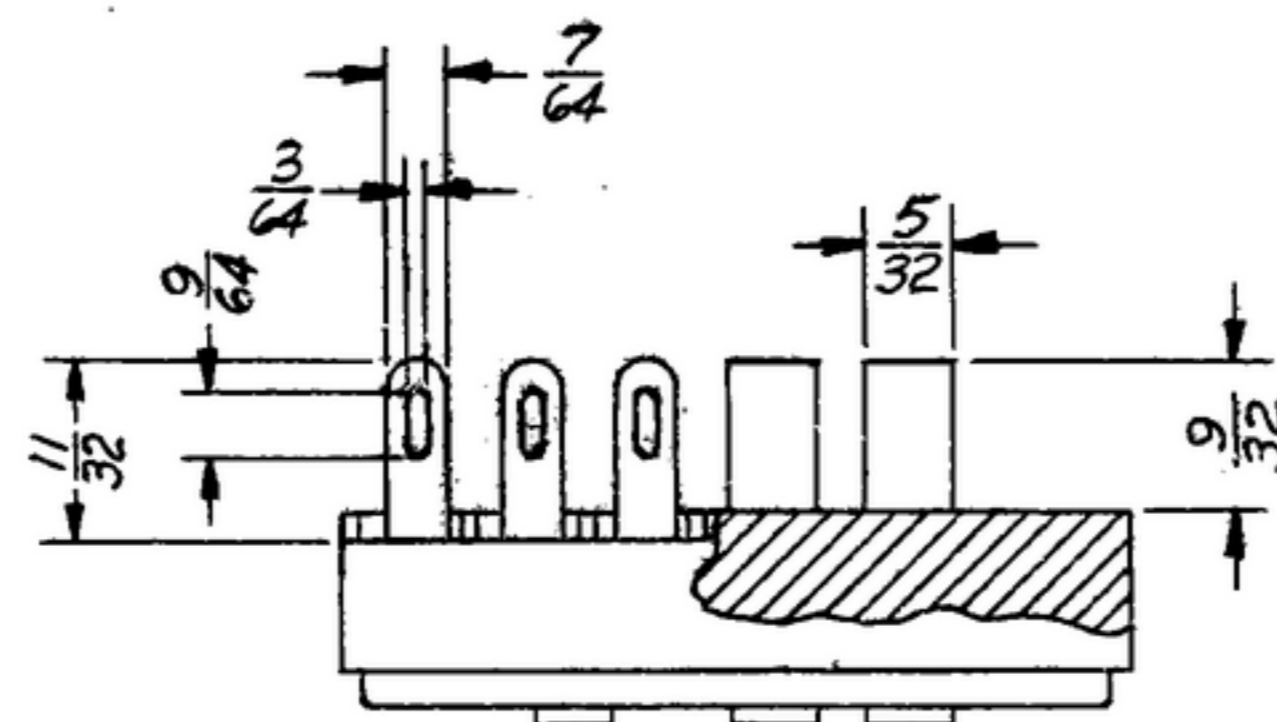
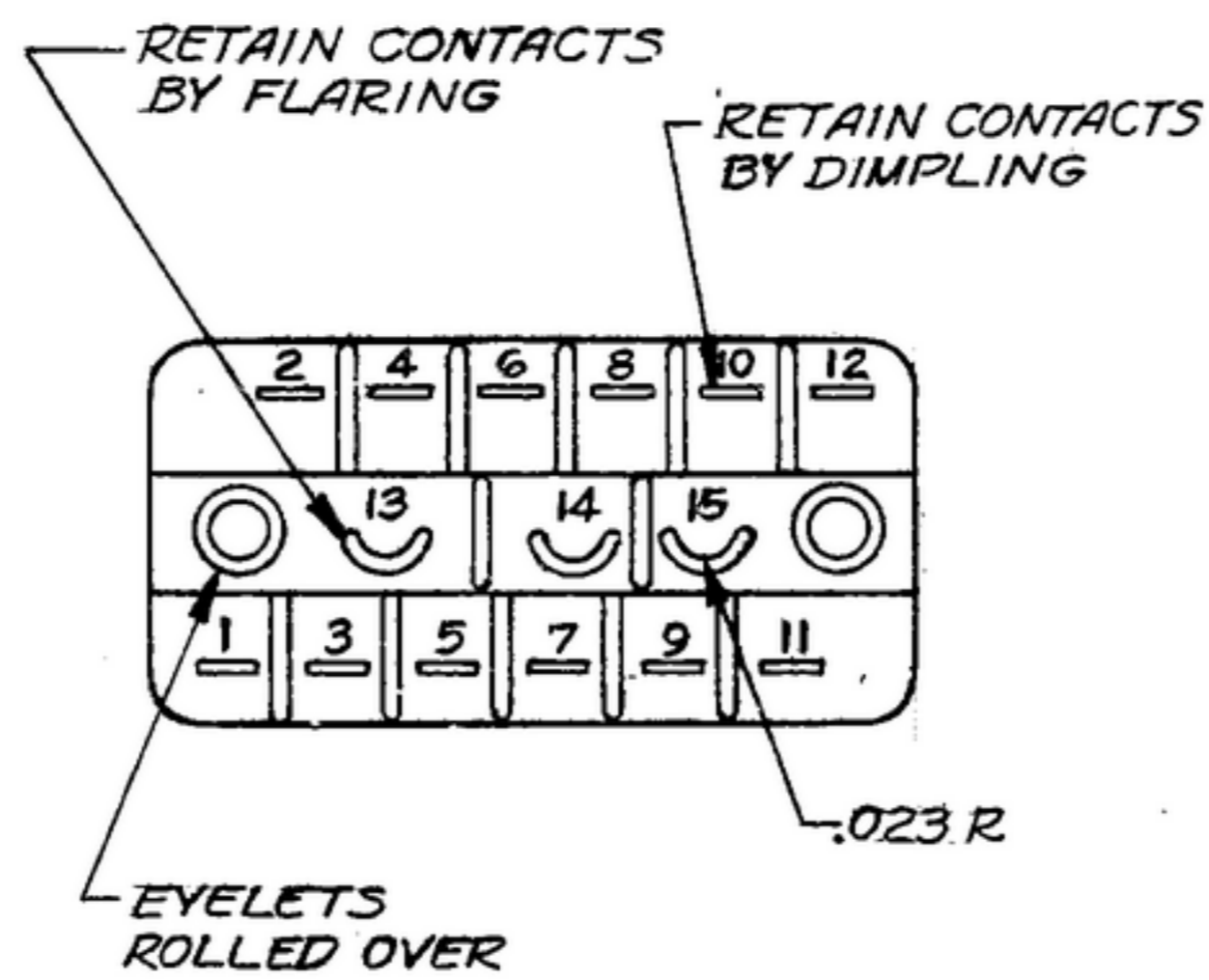
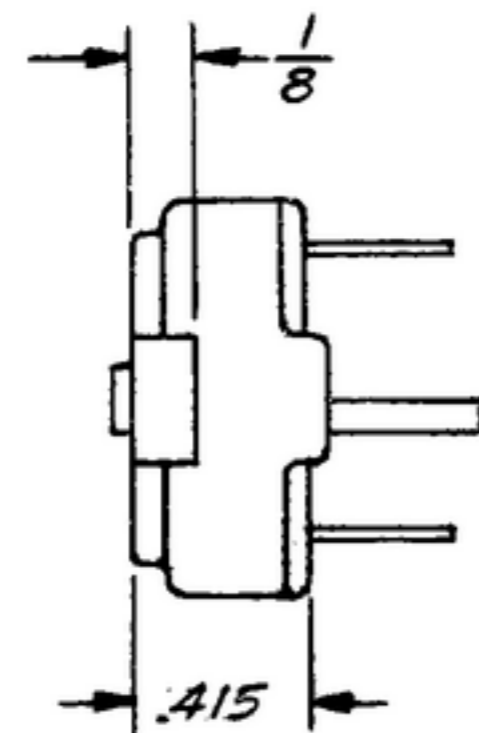
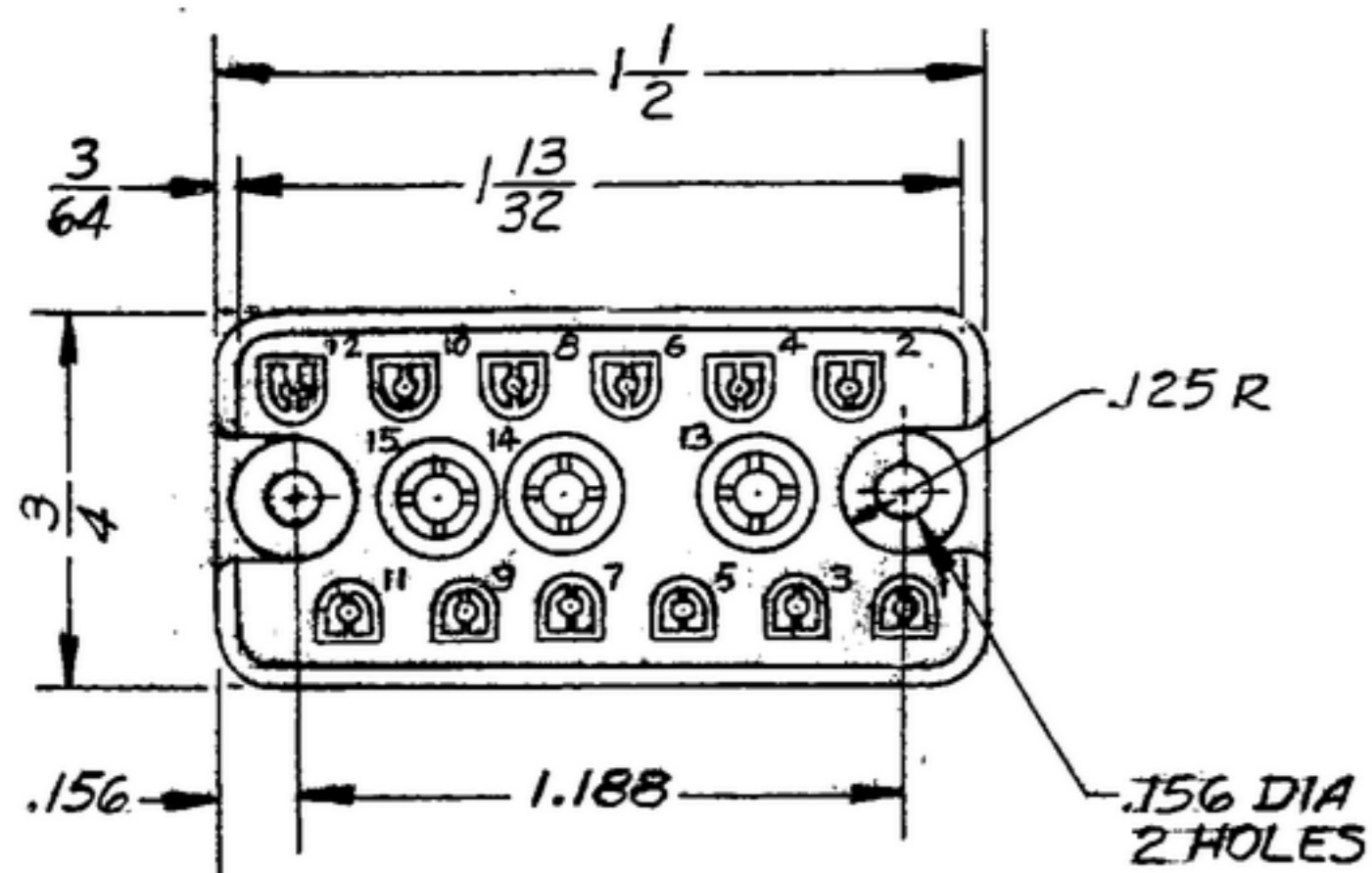


REC-PM 79746

REVISIONS			
LTR	DESCRIPTION	DATE	APPROVED
F	REVISED AND REDRAWN.	18 JAN 65	JLC EJ FOR



- NOTES:
- CONNECTOR TO BE MOLDED OF MFE THERMOSETTING PHENOLIC RESIN PER MIL-M-14.
  - CONTACTS TO BE OF BERYLLIUM COPPER, COND AT PER QQ-C-533 & GOLD FLASH AFTER FINISH M311 PER MIL-F-14072.
  - PLUG NO. 126-150 AS SUPPLIED BY AMPHENOL CORP, BROADVIEW, ILL., OR EQUAL.
  - CONTACT IDENTIFYING NUMBERS, AS INDICATED, SHALL BE MOLDED ON THE SURFACE.
  - PLUG SHALL MATE PROPERLY WITH SC-C-41380.
  - PULL REQUIRED TO REMOVE .040 ± .001 DIA SMOOTH PIN FROM SMALLER CONTACTS SHALL BE 1 1/2 OUNCES MIN. PULL REQUIRED TO REMOVE .093 ± .001 DIA SMOOTH PIN FROM LARGER CONTACTS SHALL BE 6 OUNCES MIN. LARGER CONTACTS ARE NUMBERS 13, 14 & 15.
  - CONTACTS TO BE SECURELY HELD IN MOLDING MATERIAL.
  - CONNECTOR SHALL MEET THE APPLICABLE REQUIREMENTS OF SPEC MIL-C-8384.
  - MARKING SHALL BE IN ACCORDANCE WITH SPEC MIL-M-13231.

ITEM NO.	QTY REQD	PART OR IDENTIFYING NUMBER	NOMENCLATURE OR DESCRIPTION	SPECIFICATION	NOTE
PARTS LIST					
			AUTHENTICATION		
			DRAWN FTR		
			CHECKED		
			VERIFIED P.D BR.		
NEXT ASSY			USED ON		
APPLICATION					
UNLESS OTHERWISE SPECIFIED DIMENSIONS ARE IN INCHES TOLERANCES ON FRACTIONS DECIMALS ANGLES ±1/64 ±.005					
			APPROVED P.D. BR.		
			DATE 11 JUL 51		
		SIZE C		CODE IDENT NO. 80063	
		SCALE 2/1		SC-C-41149	
				SHEET	

WHEN REFERRING TO THIS DRAWING STATE DRAWING NO., APPLICABLE ISSUE LETTER, IF ANY, & DATE