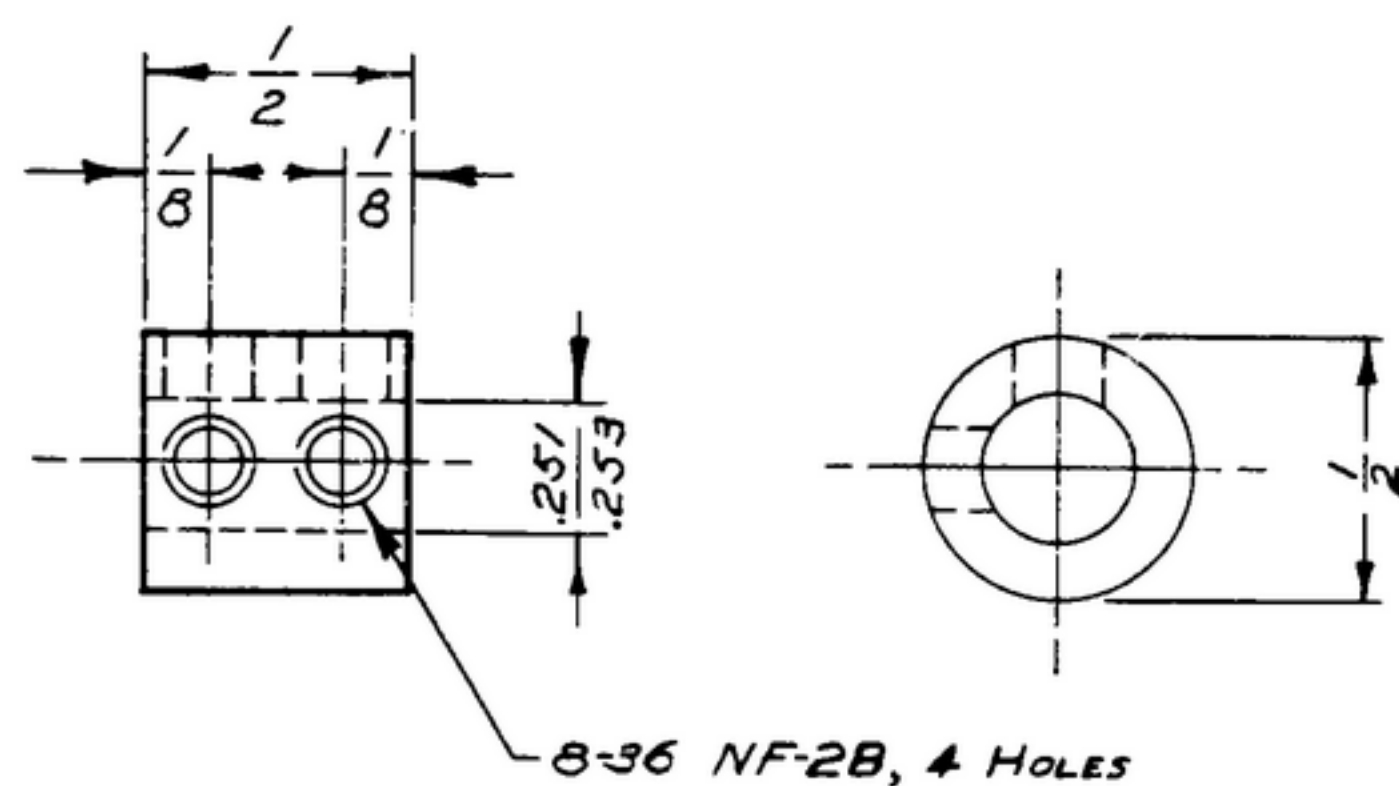


NOTICE: When Government drawings, specifications, or other data are used for any purpose other than in connection with a definitely related Government procurement operation, the United States Government hereby denies any responsibility or any obligation whatsoever; and the fact that the Government may have formulated, furnished, or in any way supplied the said drawings, specifications, or other data is not to be regarded by implication or otherwise as in any manner favoring the holder or any other person or corporation, or conveying any rights or permission to manufacture, use or sell any patented invention that may in any way be related thereto.

NEXT ASSEMBLY	USED ON	SWE *	REVISIONS			APPROVAL
			SYM	DESCRIPTION	DATE	
SM-B-178431	SC-DL-170759	APPROVAL				
(A ₂) SM-D-248818	SC-DL-248775	S Y M 100424	A ₂	A ₁ - NOTE 1 WAS 'QQ-B-611; ADDED NOTE 2. A ₂ - ADDED APPL. SM-D-248818, SM-D-343620, SC-DL-248775.	8 OCT. 59	42428-PC-59-AI-51 REV'D PME
SM-D-343620						

NOTE:

*FOR INFORMATION ONLY,
CONTRACTOR MAY AT HIS
OPTION DEVIATE FROM
THESE PROCESS DETAILS

NOTES: (A₁)

- BRASS, COMP 22 1/2 HARD, PER SPEC QQ-B-626.
- FINISH: M 262 A PER SPEC. MIL-F-14072.

UNLESS OTHERWISE SPECIFIED	AUTHENTICATION	COUPLER	DEPARTMENT OF THE ARMY SIGNAL CORPS ENGINEERING LABORATORIES PORT MONMOUTH NEW JERSEY
DIMENSIONS ARE IN INCHES	DRAWN 21832-PH		
TOLERANCES ON	TRACED PHOTO		
FRACTIONS ± 1/100	CHECKED <i>Phm</i>		
DECIMALS ±	VERIFIED P.O.B.R.		
ANGLES ±	APPROVED P.O.B.R.		
COMMERCIAL TOLERANCES APPLY TO STOCK SIZES	REVIEWED PME	SCALE 2/1	FINISH 90-4B1
ALL SURFACES ✓	DATE 28 APR 53	SM-B-178433	

WHEN REFERRING TO THIS DRAWING STATE DRAWING NO., APPLICABLE ISSUE SYMBOL AND DATE