

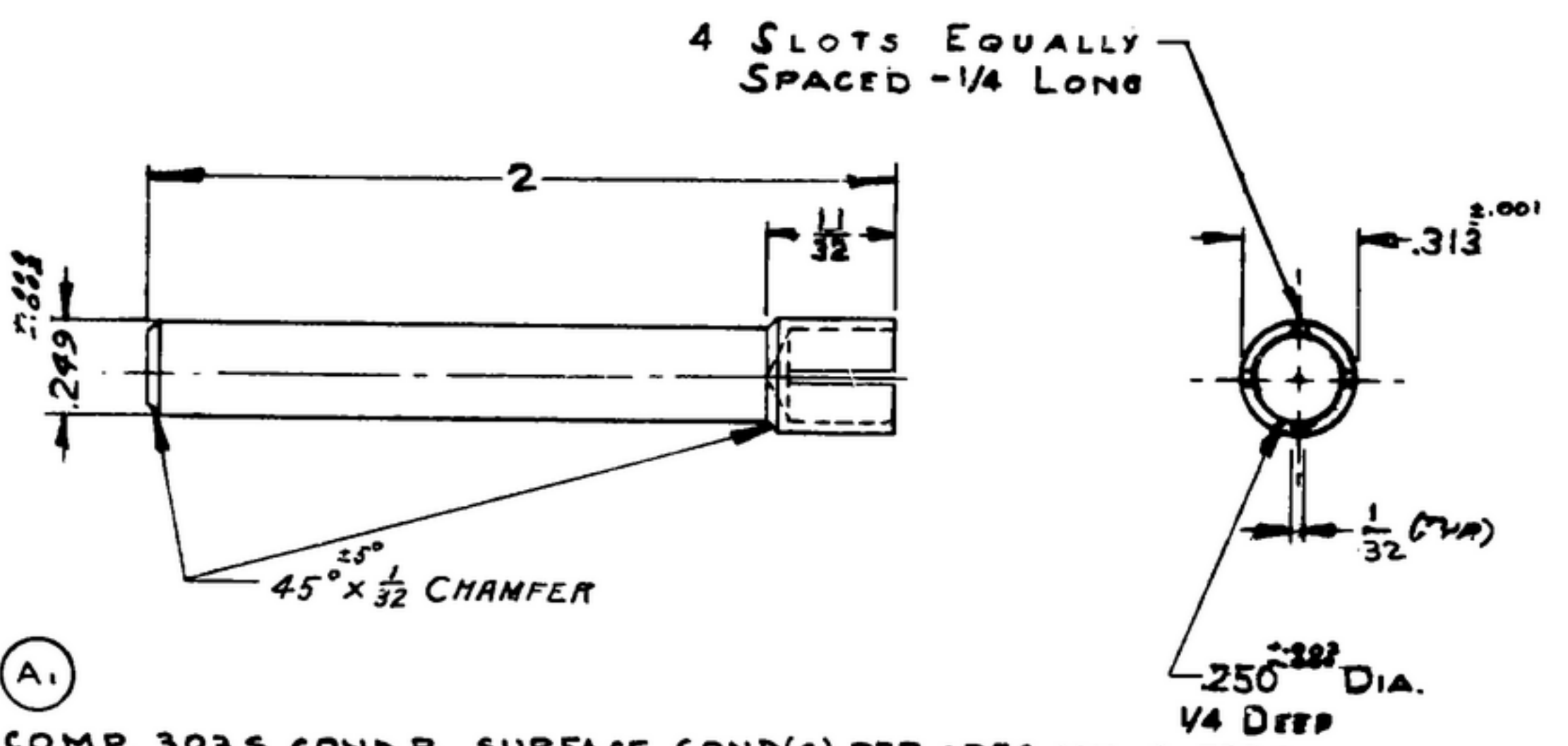
LMP - 0.7

506-2133-002

NOTICE: WHEN GOVERNMENT DRAWINGS, SPECIFICATIONS, OR OTHER DATA ARE USED FOR ANY PURPOSE OTHER THAN IN CONNECTION WITH A DEFINITELY RELATED GOVERNMENT PROCUREMENT OPERATION, THE UNITED STATES GOVERNMENT THEREBY INCURS NO RESPONSIBILITY FOR ANY OBLIGATION WHATSOEVER AND THE FACT THAT THE GOVERNMENT MAY HAVE FORMULATED, PROVIDED, OR IN ANY WAY SUPPLIED THE SAID DRAWINGS, SPECIFICATIONS, OR OTHER DATA IS NOT TO BE REGARDED BY IMPLICATION OR OTHERWISE AS IN ANY MANNER LICENSING THE HOLDER OR ANY OTHER PERSON OR CORPORATION, OR CONVEYING ANY RIGHTS OR PERMISSION TO MANUFACTURE, USE, OR SELL ANY PATENTED INVENTION THAT MAY IN ANY WAY BE RELATED THERETO.

NOTE:
 *FOR INFORMATION ONLY,
 CONTRACTOR MAY AT HIS
 OPTION DEVIATE FROM
 THESE PROCESS DETAILS

X SWE APPROVAL		REVISIONS		
SYM	PR	DESCRIPTION	DATE	APPROVAL
SYM	PR 10042-4			
A ₃		A ₁ STEEL WAS PER SPEC AN-S-771 A ₂ ADDED APPL SM-D-249140, SM-D-343619, SC-DL-248775 A ₃ FINISH WAS PER SPEC MIL-P-12011	8 OCT 59	4242B-PC 59-A1-S1 REV'D PME



- NOTES**
- A₁ 1 STEEL, COMP. 303 S COND B, SURFACE COND(C) PER SPEC. MIL-S-7720
 - 2 REMOVE BURRS EXCEPT SLIGHT BURR PERMISSIBLE IN SLOTS.
 - 3. FINISH E 300 PER SPEC MIL-F-14072

REQD	PART NO.	DESCRIPTION	QTY	UNIT
LIST OF MATERIAL				

UNLESS OTHERWISE SPECIFIED		AUTHENTICATION	
DIMENSIONS ARE IN INCHES		DRAWN 21852-PN-50-93	
TOLERANCES ON		TRACED <i>Photo</i>	
FRACTIONS	DECIMALS	ANGLES	CHECKED <i>M</i>
+ 1/64			VERIFIED <i>PD BR</i>
			APPROVED <i>PD BR</i>
			REVIEWED <i>PME</i>
			DATE 3 AUG. '53

SHAFT

SCALE 2/1

SIGNAL CORPS ENGINEERING
 LABORATORIES

FORT MONMOUTH NEW JERSEY

SM-B-178493

A₂