

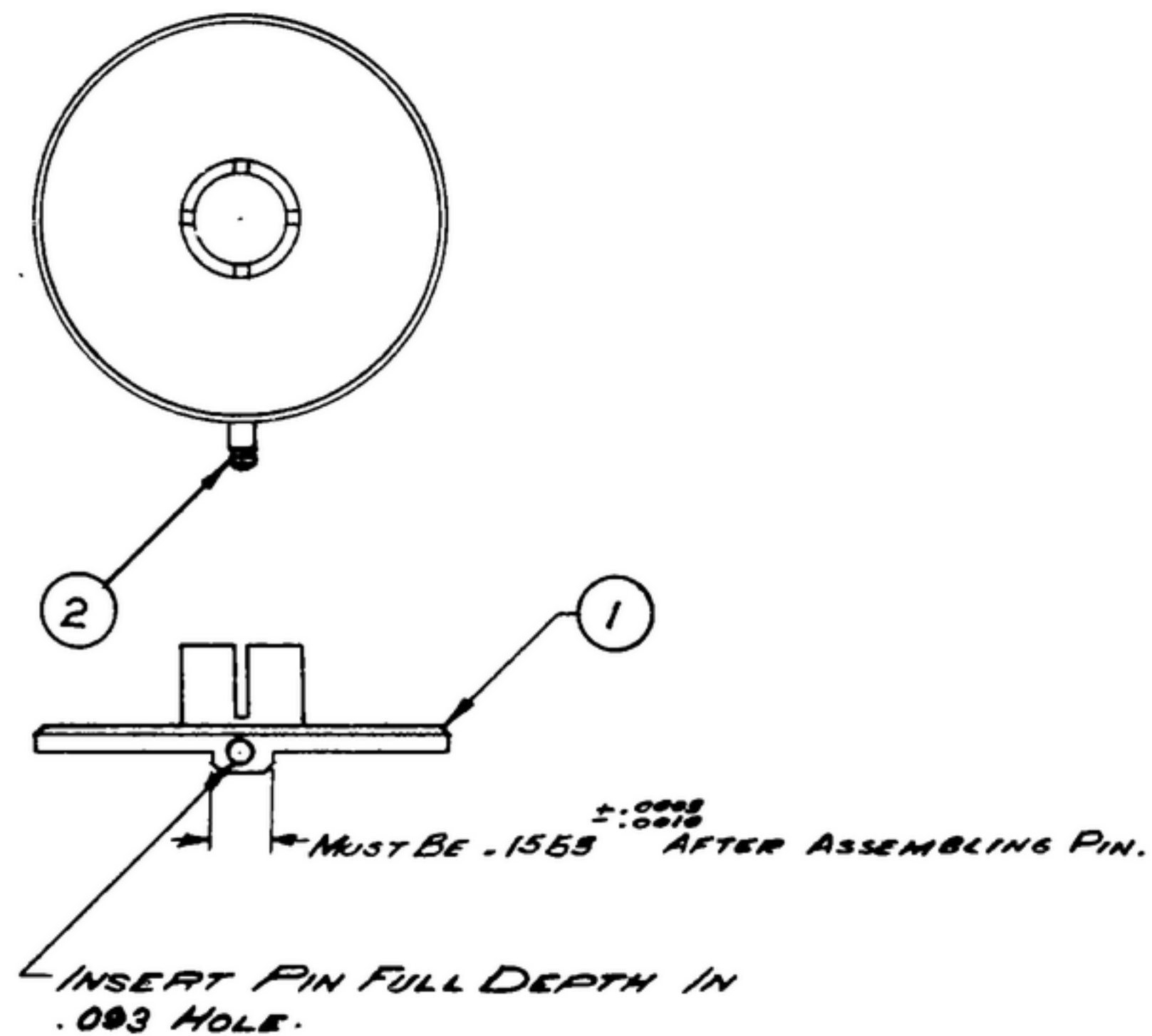
R-391-77-1934-005
500-1498-002 R-391

1.3

NOTICE: When Government drawings, specifications, or other data are used for any purpose other than in connection with a definitely related Government procurement operation, the United States Government hereby issues its responsibility or any obligation whatsoever, and the fact that the Government may have furnished, furnished, or in any way supplied the said drawings, specifications, or other data is not to be regarded by implication or otherwise as in any manner binding the holder or any other person or corporation, or conveying any rights or privileges to manufacturers, use or sell any patented invention that may in any way be related thereto.

SM	DESCRIPTION	DATE	APPROVAL
A ₁	A ₁ - ADDED ITEM; A ₂ - ADDED APPL. SM-D-249140, SM-D-343619, SC-DL-248775.	13 NOV. 59	42428-PC-59-A1-51 REV'D. PME
A ₂			
A ₃	A ₃ - REMOVED NOTE #1.		

NOTE:
*FOR INFORMATION ONLY, CONTRACTOR MAY AT HIS OPTION DEVIATE FROM THESE PROCESS DETAILS



ITEM	QTY	PART NO.	DESCRIPTION	MATL	SPEC	NOTE
2	1	SM-B-343637	PIN			
1	1	SM-C-178666	COUPLING			

UNLESS OTHERWISE SPECIFIED DIMENSIONS ARE IN INCHES TOLERANCES ON FRACTIONS ± _____ DECIMALS ± _____ ANGLES ± _____ COMMERCIAL TOLERANCES APPLY TO STOCK SIZES ALL SURFACES ✓	AUTHENTICATION DRAWN 21852-FH-50-89 TRACED PHOTO CHECKED <i>KL</i> VERIFIED <i>POBR</i> APPROVED <i>POBR</i> REVIEWED <i>PME</i> DATE 9-MAY-53	<h2>COUPLING ASSY</h2>		DEPARTMENT OF THE ARMY SIGNAL CORPS ENGINEERING LABORATORIES FORT MONMOUTH NEW JERSEY <h3>SM-B-178665</h3>
	SCALE 2/1	FINISH _____		

WHEN REFERRING TO THIS DRAWING STATE DRAWING NO., APPLICABLE ISSUE SYMBOL AND DATE