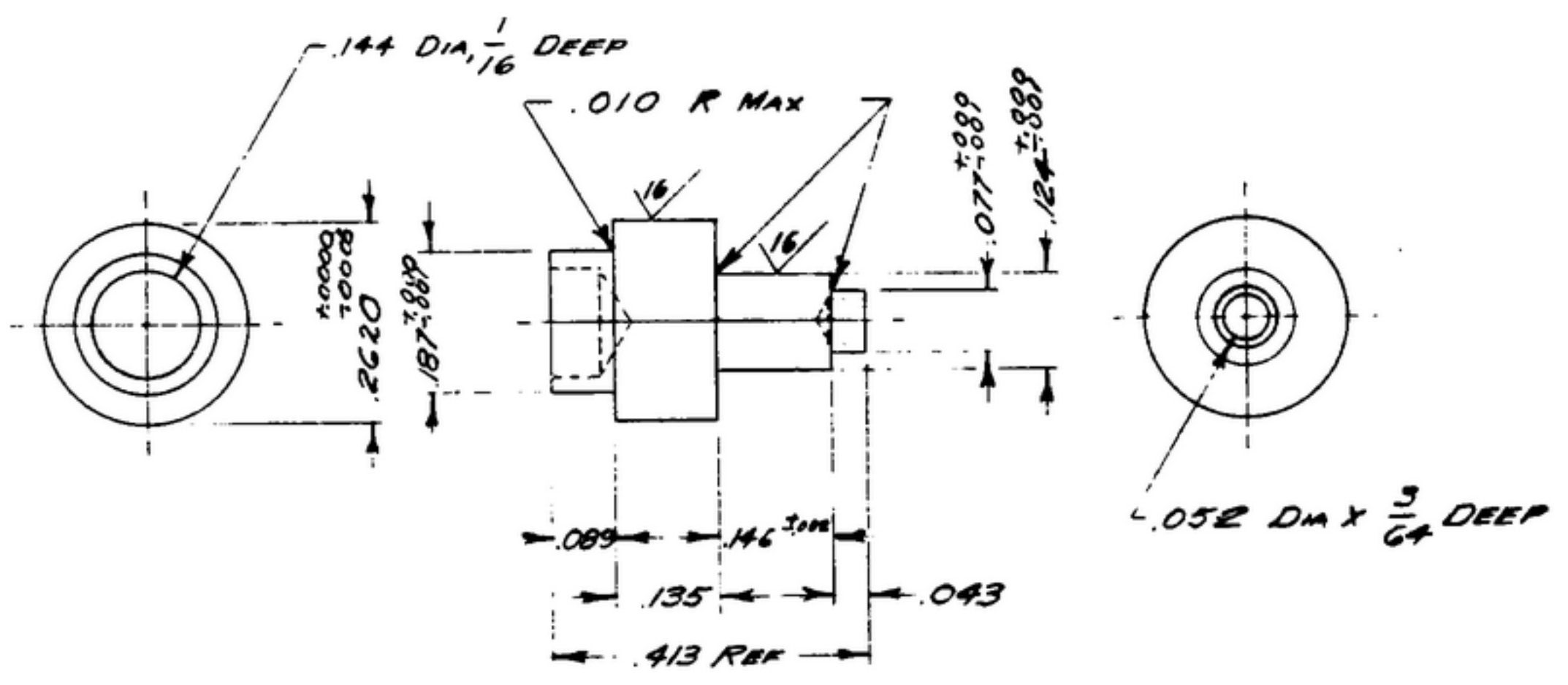


DIA. 208

NOTICE: When Government drawings, specifications, or other data are used for any purpose other than in connection with a definitely related Government procurement operation, the United States Government thereby incurs no responsibility or any obligation whatsoever; and the fact that the Government may have furnished, furnished, or in any way supplied the said drawings, specifications, or other data is not to be regarded by implication or otherwise as in any manner licensing the holder or any other person or corporation, or conveying any rights or permission to manufacture, use or sell any patented invention that may in any way be related thereto.

NEXT ASSEMBLY	USED ON
SM-C-178737	SC-DL-178467
SM-C-178741	

REVISIONS		DATE	APPROVAL
SYM	DESCRIPTION		



STEEL, COMP FM, COND B, PER SPEC AN-S-771  
 1- PASSIVATE PROCESS 25.01 PER MIL-P-12011

UNLESS OTHERWISE SPECIFIED	AUTHENTICATION	<b>SHAFT</b>	DEPARTMENT OF THE ARMY SIGNAL CORPS ENGINEERING LABORATORIES FORT MONMOUTH NEW JERSEY
DIMENSIONS ARE IN INCHES	DRAWN 21852-PH 50-93		
TOLERANCES ON	TRACED PHOTO		
FRACTIONS ± 1/64	CHECKED <i>[Signature]</i>		
DECIMALS ± .005	VERIFIED PD BR		
ANGLES ±	APPROVED PD BR		
COMMERCIAL TOLERANCES APPLY TO STOCK SIZES	REVIEWED PME	SCALE 4/1	SEE NOTE 1
ALL SURFACES ✓	DATE 15 JUL 53	<b>SM-B-178738</b>	