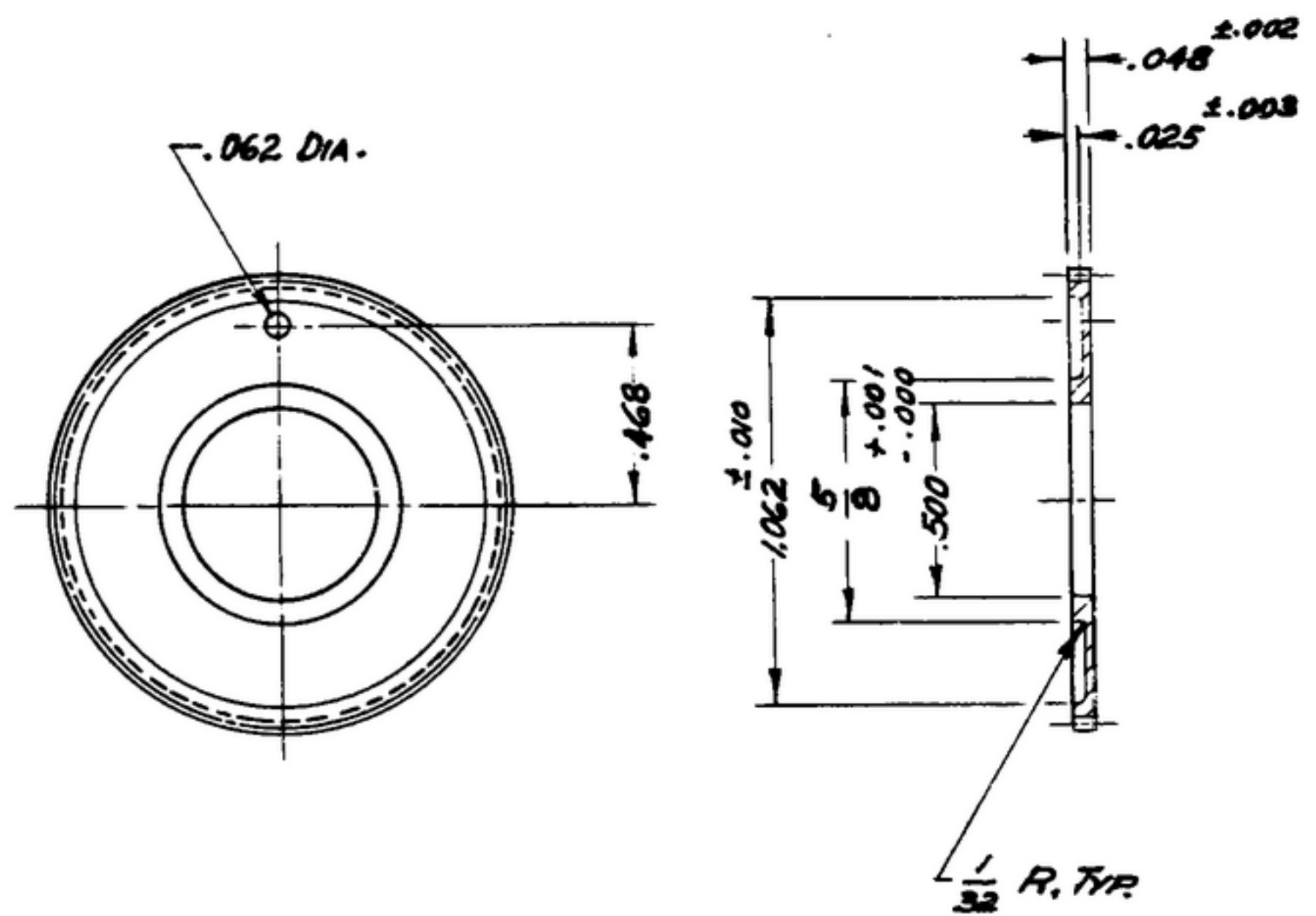


A-301 546 1761 027

NOTICE: When Government drawings, specifications, or other data are used for any purpose other than in connection with a definitely related Government procurement operation, the United States Government thereby incurs no responsibility or any obligation whatsoever; and the fact that the Government may have formulated, furnished, or in any way supplied the said drawings, specifications, or other data is not to be regarded by implication or otherwise as in any manner licensing the holder or any other person or corporation, or conveying any rights or permission to manufacture, use or sell any patented invention that may in any way be related thereto.

SYMBOL	SYMBOL	DESCRIPTION	DATE	APPROVAL	SWE
					APPROVAL
A ₂	SM-C-178855	SC-DL-178467	8 OCT. 59	42428-PC-59-A-51	PR 10042-M
	SM-C-178855	SC-DL-248775	23 FEB. 60	42428-PC-59	CA 84682
			15 SEP. 60	42428-PC-59	CA 84855



(A₁)

NOTES:

- 1.- BRASS, COMPOSITION 24 1/2 HARD, PER SPEC QQ-B-613. (B₁)
- 2.- NORMAL DIAMETRAL PITCH: 48
THEORETICAL PITCH DIAMETER: 1.166
PRESSURE ANGLE: 14 1/2°
NUMBER OF TEETH: 56
BACKLASH ON NORMAL PITCH CIRCLE WHEN MATED WITH MASTER .0015-.0025.
AMERICAN STANDARD TOOTH FORM.
- 3.- ECCENTRICITY BETWEEN BORE DIAMETER AND PITCH DIAMETER SHALL NOT EXCEED .002 TIR.
- 4.- PART MUST BE FLAT WITHIN .006 TIR.
- 5.- PART MUST BE FREE OF BURRS & SHARP EDGES.
- 6.- FINISH: CHEMICAL POLISH PER IRIDITE #7 METCOTE PROCESS BU ALLIED RESEARCH PRODUCTS INC., BALTIMORE, MD., OR EQUAL.

(C₁)

NOTE:
FOR INFORMATION ONLY,
CONTRACTOR MAY AT HIS
OPTION DEVIATE FROM
THESE PROCESS DETAILS

REV.	DATE	DESCRIPTION	BY	CHKD.	APP'D.
GEAR					
DEPARTMENT OF THE ARMY SIGNAL CORPS ENGINEERING LABORATORIES FORT MONMOUTH NEW JERSEY					
SM-B-178856					

UNLESS OTHERWISE SPECIFIED	AUTHENTICATION
DIMENSIONS ARE IN INCHES	DRAWN 21852-PN-50-83
TOLERANCES ON	TRACED PHOTO
FRACTIONS ± 1/64	CHECKED <i>PK</i>
DECIMALS ± .005	VERIFIED P.D.B.R.
ANGLES ±	APPROVED P.D.B.R.
COMMERCIAL TOLERANCES APPLY TO STOCK SIZES	REVIEWED <i>PME</i>
ALL SURFACES ✓	DATE 29-JUNE-59

SCALE 2/1