

0.4

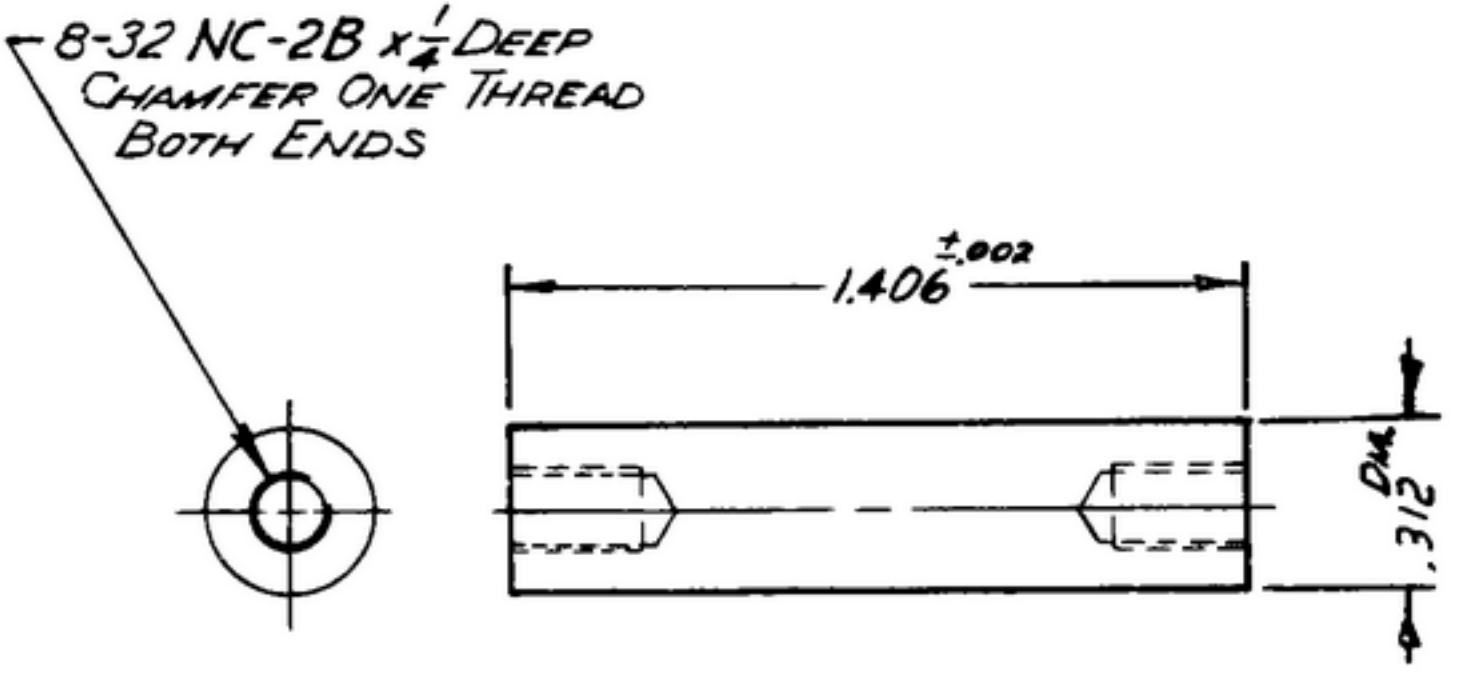
4391

506 2158 A2

NOTICE: When Government drawings, specifications, or other data are used for any purpose other than in connection with a definitely related Government procurement operation, the United States Government thereby incurs no responsibility or any obligation whatsoever; and the fact that the Government may have furnished, furnished, or in any way supplied the said drawings, specifications, or other data is not to be regarded by implication or otherwise as in any manner forming the holder or any other person or corporation, or conveying any rights or permission to manufacture, use or sell any patented invention that may in any way be related thereto.

NEXT ASSEMBLY	USED ON	SWE
SM-D-178900	SC-DL-178467	APPROVAL
SM-D-248975	SC-DL-248775	S Y R. M 100423
SM-D-343600	↓	

REVISIONS		DATE	APPROVAL
SYM	DESCRIPTION		
A <sub>2</sub>	A <sub>1</sub> -ADDED FINISH NOTE; A <sub>2</sub> -ADDED APPL. SM-D-248975, SM-D-343600, SC-DL-248775	6 OCT. 59	42428-PC-59-AJ-51 RE'D. PME
B <sub>1</sub>	(1) FINISH WAS M 262 A.	17 JULY 1962	L.T. JM E.D.B.



NOTES:

- 1.-STEEL COMP FS 1112, COND COLD ROLLED, PER SPEC. QQ-5-633
- 2.- REMOVE ALL BURRS.
- 3.- ALL THREADS SHALL BE IN ACCORDANCE WITH SCREWTHREAD STANDARDS FOR FEDERAL SERVICES HANDBOOK H-28.
- 4.- FINISH: M 264 PER MIL -F-14072.

(B<sub>1</sub>)

(A<sub>1</sub>)

NOTE:

\*FOR INFORMATION ONLY, CONTRACTOR MAY AT HIS OPTION DEVIATE FROM THESE PROCESS DETAILS

ISS.	FILE NO.	DESCRIPTION	MAT.	SEC.	NOTE																											
<table border="1"> <tr> <td rowspan="6">           UNLESS OTHERWISE SPECIFIED             DIMENSIONS ARE IN INCHES            TOLERANCES ON            FRACTIONS ± _____            DECIMALS ± .005            ANGLES ± _____             COMMERCIAL TOLERANCES APPLY TO STOCK SIZES             ALL SURFACES ✓         </td> <td colspan="2">AUTHENTICATION</td> <td rowspan="6" style="text-align: center; vertical-align: middle; font-size: 2em;">POST</td> <td colspan="2" rowspan="6" style="text-align: center; vertical-align: middle;">           DEPARTMENT OF THE ARMY            SIGNAL CORPS ENGINEERING LABORATORIES            FORT MONMOUTH NEW JERSEY   <b>SM-B-178906</b> </td> </tr> <tr> <td colspan="2">DRAWN 21852-PN-50-93</td> </tr> <tr> <td colspan="2">TRACED PHOTO</td> </tr> <tr> <td colspan="2">CHECKED <i>[Signature]</i></td> </tr> <tr> <td colspan="2">VERIFIED P.D.B.R.</td> </tr> <tr> <td colspan="2">APPROVED P.D.B.R.</td> </tr> <tr> <td colspan="2">REVIEWED PME</td> <td>SCALE 2/1</td> <td colspan="2">90-485-01570-187, 21852</td> </tr> <tr> <td colspan="2">DATE 4-JUL-53</td> <td colspan="4"></td> </tr> </table>						UNLESS OTHERWISE SPECIFIED  DIMENSIONS ARE IN INCHES TOLERANCES ON FRACTIONS ± _____ DECIMALS ± .005 ANGLES ± _____  COMMERCIAL TOLERANCES APPLY TO STOCK SIZES  ALL SURFACES ✓	AUTHENTICATION		POST	DEPARTMENT OF THE ARMY SIGNAL CORPS ENGINEERING LABORATORIES FORT MONMOUTH NEW JERSEY  <b>SM-B-178906</b>		DRAWN 21852-PN-50-93		TRACED PHOTO		CHECKED <i>[Signature]</i>		VERIFIED P.D.B.R.		APPROVED P.D.B.R.		REVIEWED PME		SCALE 2/1	90-485-01570-187, 21852		DATE 4-JUL-53					
UNLESS OTHERWISE SPECIFIED  DIMENSIONS ARE IN INCHES TOLERANCES ON FRACTIONS ± _____ DECIMALS ± .005 ANGLES ± _____  COMMERCIAL TOLERANCES APPLY TO STOCK SIZES  ALL SURFACES ✓	AUTHENTICATION		POST	DEPARTMENT OF THE ARMY SIGNAL CORPS ENGINEERING LABORATORIES FORT MONMOUTH NEW JERSEY  <b>SM-B-178906</b>																												
	DRAWN 21852-PN-50-93																															
	TRACED PHOTO																															
	CHECKED <i>[Signature]</i>																															
	VERIFIED P.D.B.R.																															
	APPROVED P.D.B.R.																															
REVIEWED PME		SCALE 2/1	90-485-01570-187, 21852																													
DATE 4-JUL-53																																

WHEN REFERRING TO THIS DRAWING STATE DRAWING NO., APPLICABLE ISSUE SYMBOL AND DATE