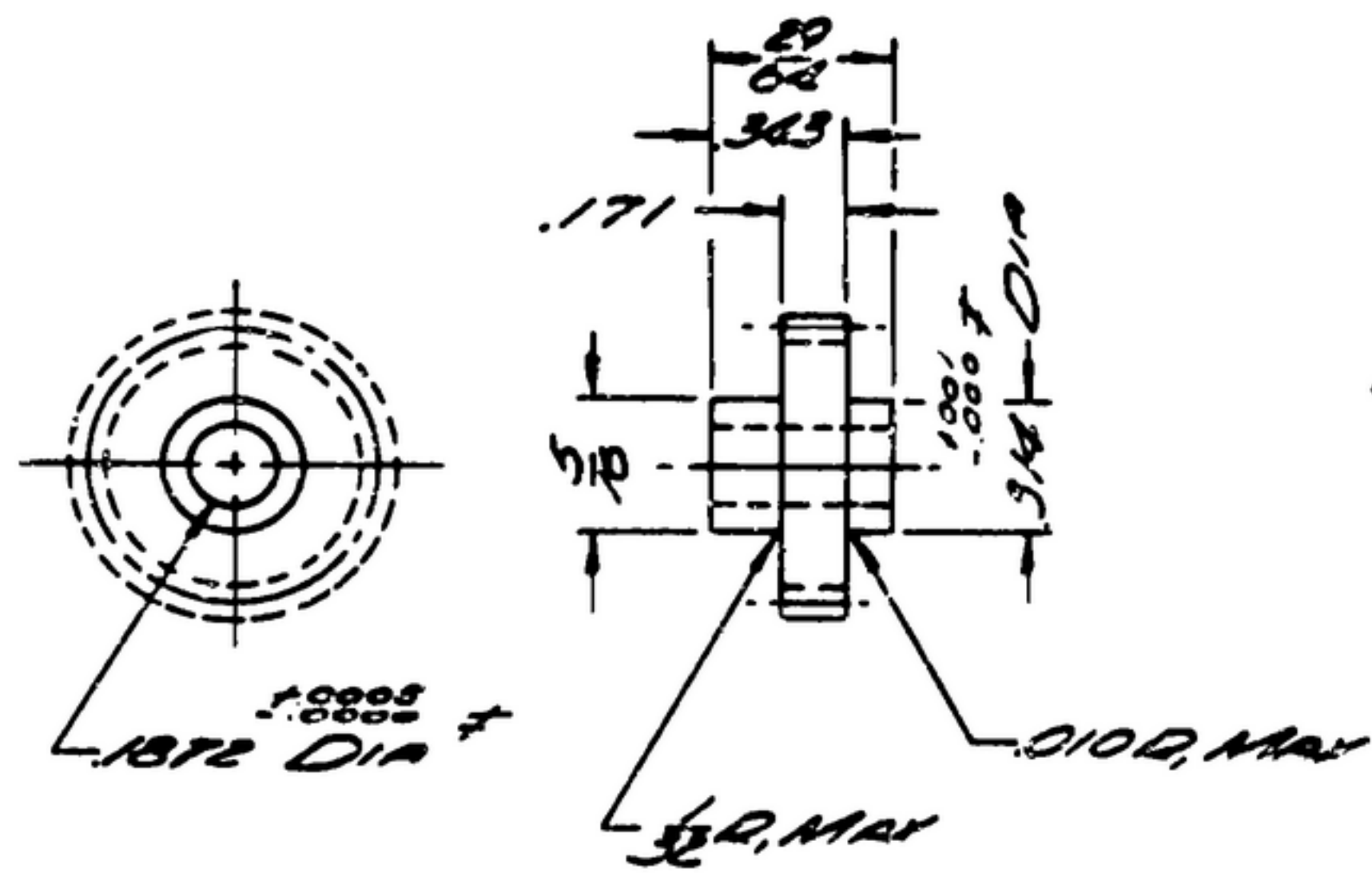


NOTE: THIS GOVERNMENT SPECIFICATION, IDENTIFICATION, OR OTHER DATA ARE USED FOR ANY PURPOSE OTHER THAN TO IDENTIFY THIS A SPECIFICALLY RELATED GOVERNMENT PROPERTY OR OPERATION, THE UNITED STATES GOVERNMENT TAKES NO RESPONSIBILITY FOR ANY UNLAWFUL OPERATION AND THE FACT THAT THE GOVERNMENT HAS BEEN FURNISHED, PROVIDED, OR IS ANY WAY RELATED TO THE DRAWING, SPECIFICATION, OR OTHER DATA IS NOT TO BE CONSIDERED AN IMPLICATION OR ENDORSEMENT OF ANY GOODS, SERVICES, OR BRANDS OR ANY OTHER FORM OF IDENTIFICATION, OR ANYTHING FOR WHICH IS REFERRED TO HEREIN. THIS, OR, OR CALL, ANY PATENTED INVENTION THAT MAY IN ANY WAY BE RELATED HERETO.

THIS DOCUMENT HAS BEEN FURNISHED BY THE GOVERNMENT AND IS NOT TO BE REPRODUCED AND USED IN CONNECTION WITH ANY GOVERNMENT PROPERTY OR OPERATION.

FOR INFORMATION ONLY. CONTRACTOR MAY AT HIS OPTION DEVIATE FROM THESE PROCESS DETAILS.

REVISIONS			
SYM	DESCRIPTION	DATE	APPROVAL



NOTES:
 1. ECCENTRICITY BETWEEN DIAMETERS MEASURED & NOT TO EXCEED .002 TIR.
 2. GEAR DATA:
 NORMAL DIAMETRAL PITCH - 48
 NORMAL PRESSURE ANGLE - 20°
 NUMBER OF TEETH - 32
 THEORETICAL PITCH DIAMETER - .6880
 BACKLASH .002 TO .003 WHEN REFERRED TO THE THEORETICAL PITCH CIRCLE.
 TOTAL COMPOSITE ERROR NOT TO EXCEED .003 WHEN MEASURED WITH MASTER GEAR.
 AMERICAN STANDARD INVOLUTE TOOTH FORM.
 ALL TERMS AS DEFINED BY AGMA STANDARDS.

COES. COME 3033, COND B, SURFACE COND C, PER SPEC MIL-S-7720

FINISH: E300 PER SPEC MIL-F-1407E
 *COLLINS 50-6085-00

COLLINS PART NO.	REV.	FILED	DATE	DESCRIPTION	BY	DATE
LIST OF MATERIAL						
COLLINS PART NO. 50-6085-00						

DRAWN <i>RDE</i>				CHECKED <i>BG</i>		APPROVED		COLLINS RADIO-GEAR PART NO. 14214-FW-51-98		DEPARTMENT OF THE ARMY SIGNAL CORPS ENGINEERING LABORATORIES FORT MONMOUTH NEW JERSEY 3M-B-248898	
UNLESS OTHERWISE SPECIFIED: SERIAL DIMENSIONS INCLUDING HOLE SIZES MAY VARY ±.003 FRACTIONAL DIMENSIONS INCLUDING HOLE SIZES MAY VARY ±1/64 MACHINED ANGLES MAY VARY ±.1° CHAMFERED ANGLES MAY VARY ±.25° BROKEN ANGLES MAY VARY ±1° ECCENTRICITY BETWEEN ANY DIAMETERS ON THE SAME CENTERLINE SHALL NOT EXCEED .010 TOTAL INDICATOR READING. ALL DIMENSIONS ARE FINISH DIMENSIONS INCLUDING APPLIED FINISH AND ARE GIVEN IN INCHES								SIGNAL CORPS			
								REVIEWED <i>PME</i>			
								APPROVED <i>HLV</i> <i>PME</i>			
COLLINS NO. <i>50-6085-00</i>				NEXT ASSY <i>50-6085-00</i>		USED ON		DATE <i>2 Oct 53</i>		SCALE <i>2/1</i>	
APPLICATION											