

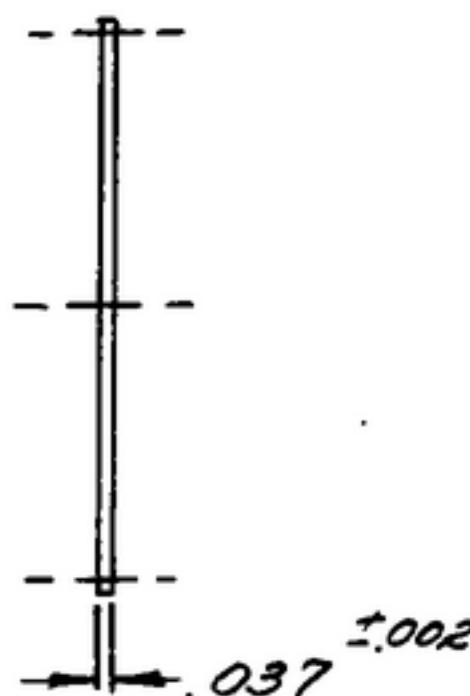
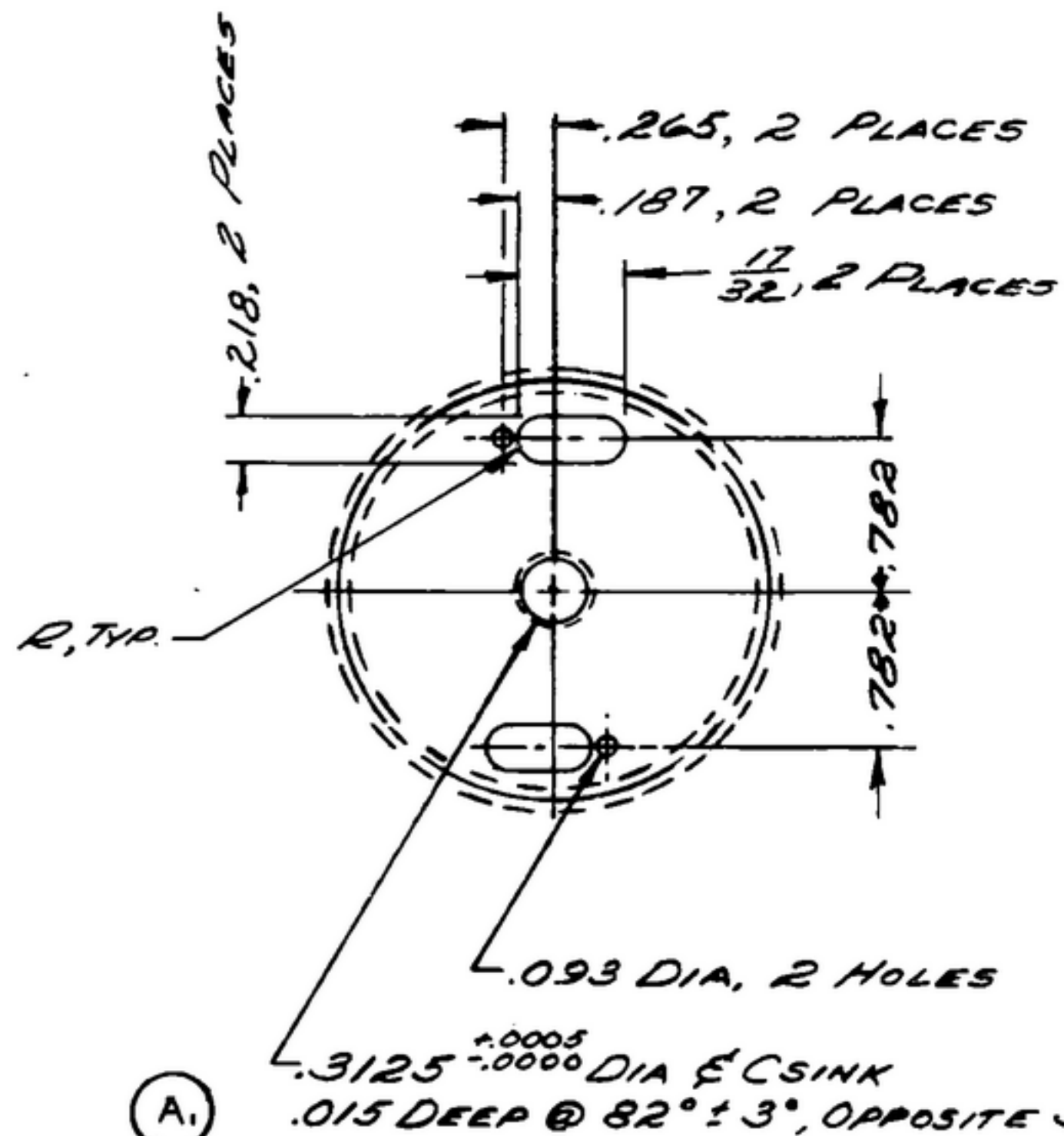
NOTICE: WHEN GOVERNMENT DRAWINGS, SPECIFICATIONS, OR OTHER DATA ARE USED FOR ANY PURPOSE OTHER THAN IN CONNECTION WITH A SPECIFICALLY RELATED GOVERNMENT PROCUREMENT OPERATION, THE UNITED STATES GOVERNMENT THEREBY ASSUMES NO RESPONSIBILITY FOR ANY CONSEQUENCE WHATSOEVER AND THE FACT THAT THE GOVERNMENT MAY HAVE REGULATED, PROVIDED, OR IN ANY WAY SUPPLIED THE SAID DRAWINGS, SPECIFICATIONS, OR OTHER DATA IS NOT TO BE CONSIDERED BY IMPLICATION OR OTHERWISE AS IN ANY MANNER LIMITING THE RIGHTS OF ANY OTHER PERSON OR ORGANIZATION, OR AS AFFECTING ANY RIGHTS OR PERMISSION TO MANUFACTURE, USE, OR SELL ANY PATENTED INVENTION THAT MAY IN ANY WAY BE RELATED THERETO.

THIS DOCUMENT HAS BEEN FORWARDED BY THE GOVERNMENT AND MAY BE REPRODUCED AND USED IN CONNECTION WITH ANY GOVERNMENT PROCUREMENT OR MANUFACTURE OPERATION.

\*FOR INFORMATION ONLY. CONTRACTOR MAY AT HIS OPTION DEVIATE FROM THESE PROCESS DETAILS.

*X SWE APPROVAL*  
*SYM PR10042-2*

REVISIONS			
SYM	DESCRIPTION	DATE	APPROVAL
A <sub>2</sub>	A <sub>1</sub> COMP 301 WAS 302 A <sub>2</sub> ADDED APPL SM-D-343600	10 OCT 59	42428-PC 59-AI-51 REV'D PME



NOTES:  
1. GEAR DATA  
NORMAL DIAMETRAL PITCH 32  
NORMAL PRESSURE ANGLE 20°  
NUMBER OF TEETH 68  
THEORETICAL PITCH DIAMETER 2.125  
BACKLASH .0015 TO .0025 WHEN REFERRED TO THEORETICAL PITCH CIRCLE.  
TOTAL COMPOSITE ERROR NOT TO EXCEED .003 WHEN MEASURED WITH MASTER GEAR.  
AMERICAN STANDARD INVOLUTE TOOTH FORM  
ALL TERMS USED AS DEFINED BY A. G. M. A. STANDARD.  
2. GEAR TO BE FLAT WITHIN .008 T.I.R.

*CRES, COMP 301, COND 1/2 H, PER SPEC MIL-S-5059*

*FINISH: E300 PER SPEC MIL-F-14072*

*\*COLLINS 580 002500*

COLLINS PART NO.	ITEM	REQD	PART NO.	DESCRIPTION	MATL	MATL SPEC
LIST OF MATERIAL						
-COLLINS PART NO. 558 0251002						

COLLINS NO.	QTY	NEXT ASSY	USED ON
558 0251004	1	SM-D-248975	SC-DL-248775

DRAWN *Mml* CHECKED *RM* APPROVED

UNLESS OTHERWISE SPECIFIED:  
DECIMAL DIMENSIONS INCLUDING HOLE SIZES MAY VARY ±.008  
FRACTIONAL DIMENSIONS INCLUDING HOLE SIZES MAY VARY ±1/64  
MACHINED ANGLES MAY VARY ±.1°  
SHEARED ANGLES MAY VARY ±.25°  
BROKEN ANGLES MAY VARY ±.1°  
ECCENTRICITY BETWEEN ANY DIAMETERS ON THE SAME CENTERLINE SHALL NOT EXCEED .010 TOTAL INDICATOR READING.  
ALL DIMENSIONS ARE FINISH DIMENSIONS INCLUDING APPLIED FINISH AND ARE GIVEN IN INCHES.

-COLLINS RADIO-00-  
-CEDAR RAPIDS, IOWA-  
*14214-PH-51-93*

SIGNAL CORPS  
REVIEWED *PME*  
APPROVED *HLT*  
*PME*

DATE *8 Dec 55* SCALE *1/1*

DEPARTMENT OF THE ARMY  
SIGNAL CORPS ENGINEERING  
LABORATORIES  
FORT MONMOUTH NEW JERSEY

*SM-B-248902*