

EQUIP. TYPE *R390A/URR* EXP. NO. *---*

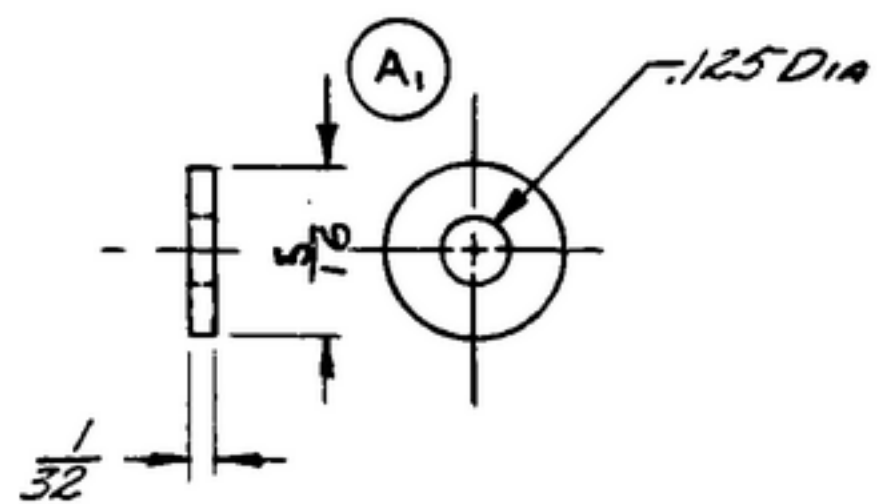
COL. 549-7602-002

NOTICE: WHEN GOVERNMENT DRAWINGS, SPECIFICATIONS, OR OTHER DATA ARE USED FOR ANY PURPOSE OTHER THAN IN CONNECTION WITH A SPECIFICALLY RELATED GOVERNMENT PURCHASE OPERATION, THE UNITED STATES GOVERNMENT THEREBY INCURS NO LIABILITY FOR ANY OMISSION, UNAUTHORIZED REPRODUCTION, OR THE FACT THAT THE GOVERNMENT MAY HAVE FORMULATED, PROVIDED, OR IN ANY WAY SUPPLIED THE SAID DRAWINGS, SPECIFICATIONS, OR OTHER DATA IS NOT TO BE REGARDED BY IMPLICATION OR OTHERWISE AS IN ANY MANNER ENDORSING THE INCLUSIONS OR ANY OTHER PORTION OR INFORMATION, OR CONVEYING ANY RIGHTS OR PERMISSIONS TO REPRODUCE, USE, OR SELL ANY PATENTED INVENTION THAT MAY IN ANY WAY BE RELATED THERETO.

THIS DOCUMENT HAS BEEN PURCHASED BY THE GOVERNMENT AND MAY BE REPRODUCED AND USED IN CONNECTION WITH ANY GOVERNMENT PURCHASEMENT OR CONTRACTING OPERATION.

* FOR INFORMATION ONLY. CONTRACTOR MAY AT HIS OPTION DEVIATE FROM THESE PROCESS DETAILS.

REVISIONS			
SYM	DESCRIPTION	DATE	APPROVAL
SWE APPROVAL	A. A. WAS 1/4	2 DEC 59	42428-PC
SYM RR 10042-8			
A.	CAB4628		REV'D PME



PLASTIC TYPE PBE-P PER SPEC MIL-P-3115

COLLINS PART NO.	ITEM	QTY	DESCRIPTION	DATE	MATERIAL SPEC
LIST OF MATERIAL					
COLLINS PART NO. <i>558-0389-002</i>					

DRAWN <i>Harmer</i>				CHECKED <i>Williams</i>		APPROVED		COLLINS-RADIO CO. CLEAR-PAPER-10WA <i>14214-PH-51-93</i>		DEPARTMENT OF THE ARMY SIGNAL CORPS ENGINEERING LABORATORIES FORT MONMOUTH NEW JERSEY	
UNLESS OTHERWISE SPECIFIED: DECIMAL DIMENSIONS INCLUDING HOLE SIZES MAY VARY ±.008 FRACTIONAL DIMENSIONS INCLUDING HOLE SIZES MAY VARY ±1/64 MACHINED ANGLES MAY VARY ±.1° SHEARED ANGLES MAY VARY ±.25° BROKEN ANGLES MAY VARY ±.1° ECCENTRICITY BETWEEN ANY DIAMETERS ON THE SAME CENTERLINE SHALL NOT EXCEED .010 TOTAL INDICATOR READING. ALL DIMENSIONS ARE FINISH DIMENSIONS INCLUDING APPLIED FINISH AND ARE GIVEN IN INCHES.				SIGNAL CORPS		REVIEWED <i>PME</i>		<i>WASHER - SPECIAL</i>			
<i>558-0396-004</i> - <i>4</i> <i>SM-D-249007</i> <i>SC-DL-248775</i>				APPROVED <i>HLV</i> <i>PME</i>		DATE <i>14 DEC 55</i>				SCALE <i>2/1</i>	
APPLICATION											