

EQIP. TYPE R390A/URR EXP. NO.

COL. 549 7869 002

NOTICE: WHEN GOVERNMENT DRAWINGS, SPECIFICATIONS, OR OTHER DATA ARE USED FOR ANY PURPOSE OTHER THAN IN CONNECTION WITH A GOVERNMENT RELATED GOVERNMENT PROCUREMENT OPERATION, THE UNITED STATES GOVERNMENT THEREBY ASSUMES NO RESPONSIBILITY FOR ANY OBLIGATION WHATSOEVER AND THE FACT THAT THE GOVERNMENT MAY HAVE FORMULATED, PROVIDED, OR IN ANY WAY SUPPLIED THE SAID DRAWINGS, SPECIFICATIONS, OR OTHER DATA IS NOT TO BE REGARDED BY IMPLICATION OR OTHERWISE AS IN ANY MANNER ENDORSING THE GOODS OR ANY OTHER FORMER OR SUBSEQUENT, OR CONVEYING ANY RIGHTS OR PRIVILEGES TO INVENTION, PATENT, OR ANY OTHER PATENTED INVENTION THAT MAY IN ANY WAY BE RELATED THEREBY.

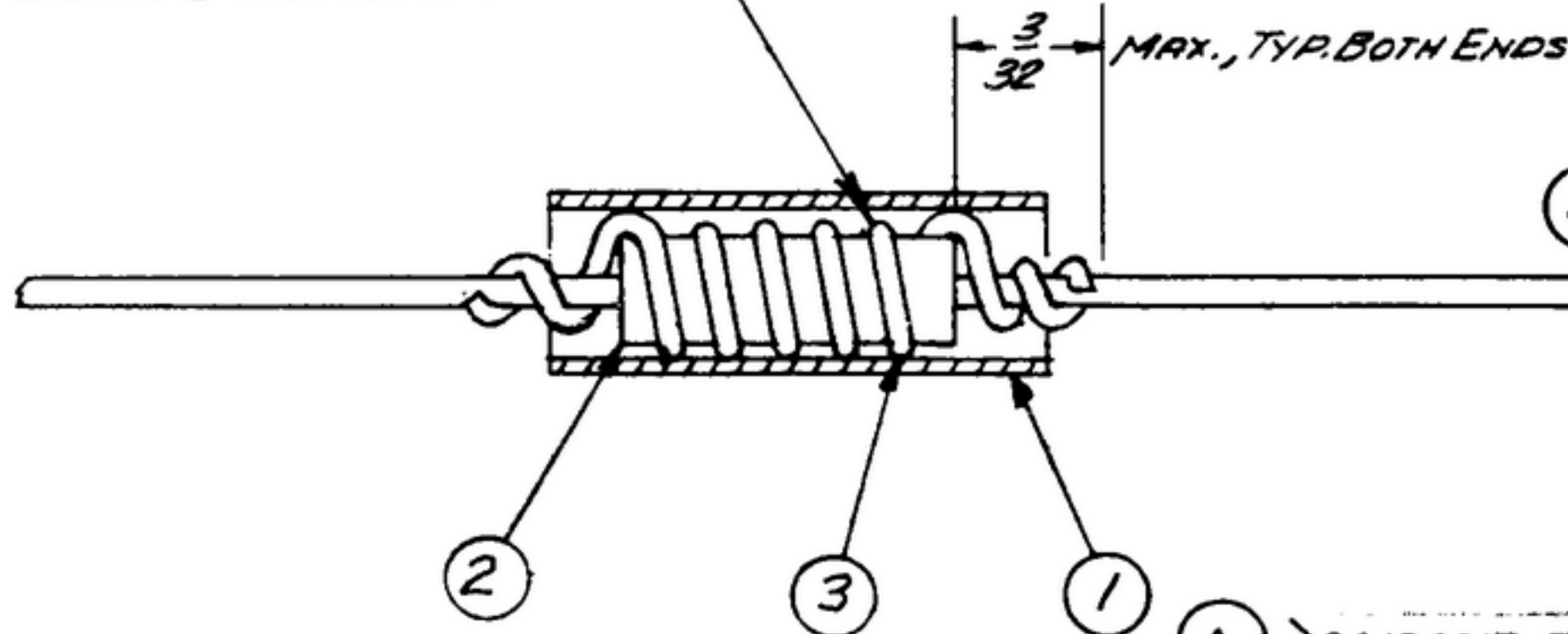
THIS DOCUMENT HAS BEEN PUBLISHED BY THE GOVERNMENT AND MAY BE REPRODUCED AND USED IN CONNECTION WITH ANY GOVERNMENT PROCUREMENT OR BARGAINING OPERATION.

* FOR INFORMATION ONLY. CONTRACTOR MAY AT HIS OPTION DEVIATE FROM THESE PROCESS DETAILS.

~~SWE APPROVAL~~
SYM | PRT0042-17

REVISIONS			
SYM	DESCRIPTION	DATE	APPROVAL
A,	A, ADDED NOTE 3 & ITEM 4	16 DEC 59	42428-PC-59-A1-51 REV'D PME

5 TURNS @ EQUAL SPACING



NOTES:

1. SOFT SOLDER PER SPEC MIL-5-6872 USING ROSIN CORE SOLDER PER SPEC QQ-5-571, COMP 5U60.
2. TYPE S NO. 22 DRAWN ANNEALED TIN COATED.
3. INSULATION ELECTRICAL SLEEVING BLACK VINYL COATED FIBERGLASS # 7AWG TYPE B-A-1 PER MIL-I-3190

SWE PART NO.	ITEM	REQD	PART NO.	DESCRIPTION	MATL	MATL SPEC	NOTE
105130317-7	4	AS REQD		SOLDER SOFT	QQ-5-571		1
303110663-39	3	AS REQD	SM-B-249064-2	WIRE	MIL-W-3861		2
375130383-64	2	1	RC206F271K	RESISTOR	MIL-R-11		
	1	AS REQD	SM-B-249064-1	INSULATION, SLEEVING	MIL-I-3190		3

LIST OF MATERIAL							
							COLLINS PART NO. <u>558 0415 002</u>

DRAWN <i>HENRY</i>			CHECKED <i>Rhm</i>			APPROVED			COLLINS RADIO CO. CEDAR RAPIDS, IOWA 14219-P.H 51-93			DEPARTMENT OF THE ARMY SIGNAL CORPS ENGINEERING LABORATORIES FORT MONMOUTH NEW JERSEY		
UNLESS OTHERWISE SPECIFIED: DECIMAL DIMENSIONS INCLUDING HOLE SIZES MAY VARY ±.008 FRACTIONAL DIMENSIONS INCLUDING HOLE SIZES MAY VARY ±1/64 MACHINED ANGLES MAY VARY ±.1° SHEARED ANGLES MAY VARY ±.25° BROKEN ANGLES MAY VARY ±.1° ECCENTRICITY BETWEEN ANY DIAMETERS ON THE SAME CENTERLINE SHALL NOT EXCEED .010 TOTAL INDICATOR READING. ALL DIMENSIONS ARE FINISH DIMENSIONS INCLUDING APPLIED FINISH AND ARE GIVEN IN INCHES.			REVIEWED <i>PME</i>			APPROVED <i>HLV</i> <i>PME</i>			SUPPRESSOR Assy-R.F.					
558-0452-005 + SM-E249101 SC-DL-248775			NEXT ASSY			USED ON						DATE <i>14 Dec 55</i> SCALE <i>B/1</i>		
APPLICATION									SM-B-249064					