

EQUIP. TYPE: R3904/JRF EXP. NO. _____

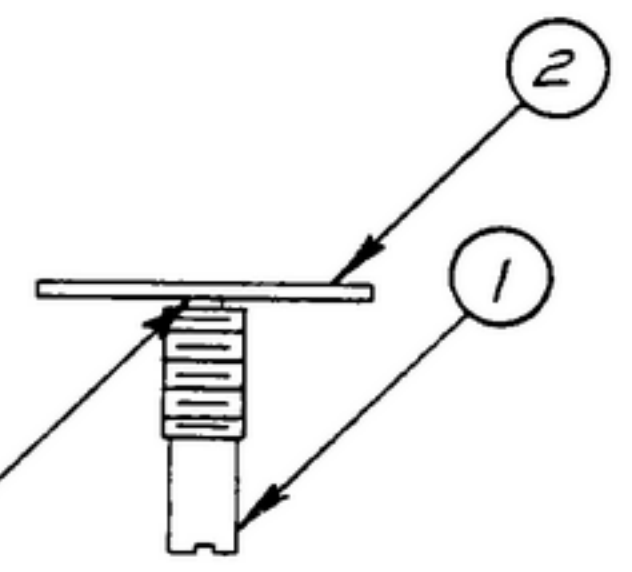
EOL 541 8152 002

NOTICE: WHEN GOVERNMENT DRAWINGS, SPECIFICATIONS, OR OTHER DATA ARE USED FOR ANY PURPOSE OTHER THAN IN CONNECTION WITH A DEFINITELY RELATED GOVERNMENT PROCUREMENT OPERATION, THE UNITED STATES GOVERNMENT THEREBY INCURS NO RESPONSIBILITY NOR ANY OBLIGATION WHATSOEVER; AND THE FACT THAT THE GOVERNMENT MAY HAVE FORMULATED, FURNISHED, OR IN ANY WAY SUPPLIED THE SAID DRAWINGS, SPECIFICATIONS, OR OTHER DATA IS NOT TO BE REGARDED BY IMPLICATION OR OTHERWISE AS IN ANY MANNER LICENSING THE HOLDER OR ANY OTHER PERSON OR CORPORATION, OR CONFERRING ANY RIGHTS OR PERMISSION TO MANUFACTURE, USE, OR SELL ANY PATENTED INVENTION THAT MAY IN ANY WAY BE RELATED THERETO.

THIS DOCUMENT HAS BEEN PURCHASED BY THE GOVERNMENT AND MAY BE REPRODUCED AND USED IN CONNECTION WITH ANY GOVERNMENT PROCUREMENT OR MAINTENANCE OPERATION.

* FOR INFORMATION ONLY, CONTRACTOR MAY AT HIS OPTION DEVIATE FROM THESE PROCESS DETAILS.

REVISIONS			
SYM	DESCRIPTION	DATE	APPROVAL



SEE NOTE 2

- NOTES:
1. LUBRICATE BEFORE ROLLING WITH GREASE (3) PER SPEC MIL-G-7421.
 2. ROLL PLATE (2) ONTO SHAFT (1) WITH C'SINK ON SHAFT SIDE. AFTER ROLLING, PLATE (2) MUST BE FREE ON SHAFT (1).

COLLINS PART NO.	ITEM	REQD	PART NO.	DESCRIPTION	MATL	MATL SPEC
005-0353-00	3	AS REQD		GREASE		
558-0452-002	2	1	SM-B-249110	PLATE-ADJUSTABLE		
558-0459-002	1	1	SM-B-249107	SHAFT-ADJUSTABLE		

LIST OF MATERIAL COLLINS PART NO. 558-0544-002

COLLINS NO.	QTY	NEXT ASSY	USED ON
558-0492-004	1	SM-D-2491405C-DL-24875	

DRAWN ECS CHECKED [Signature] APPROVED _____

UNLESS OTHERWISE SPECIFIED:
 DECIMAL DIMENSIONS INCLUDING HOLE SIZES MAY VARY ±.009
 FRACTIONAL DIMENSIONS INCLUDING HOLE SIZES MAY VARY ±1/64
 MACHINED ANGLES MAY VARY ±.1°
 SHEARED ANGLES MAY VARY ±.25°
 BROKEN ANGLES MAY VARY ±1°
 ECCENTRICITY BETWEEN ANY DIAMETERS ON THE SAME CENTERLINE SHALL NOT EXCEED .010 TOTAL INDICATOR READING.
 ALL DIMENSIONS ARE FINISH DIMENSIONS INCLUDING APPLIED FINISH AND ARE GIVEN IN INCHES.

COLLINS RADIUS CO.
 COALD SANDS, IOWA
1424 - PH - 51-93

SIGNAL CORPS
 REVIEWED PME
 APPROVED HLV
PME

DATE 28 MAR 56 SCALE 1/1

SHAFT ASSY

DEPARTMENT OF THE ARMY
 SIGNAL CORPS ENGINEERING
 LABORATORIES
 FORT MONMOUTH NEW JERSEY

SM-B-249188