

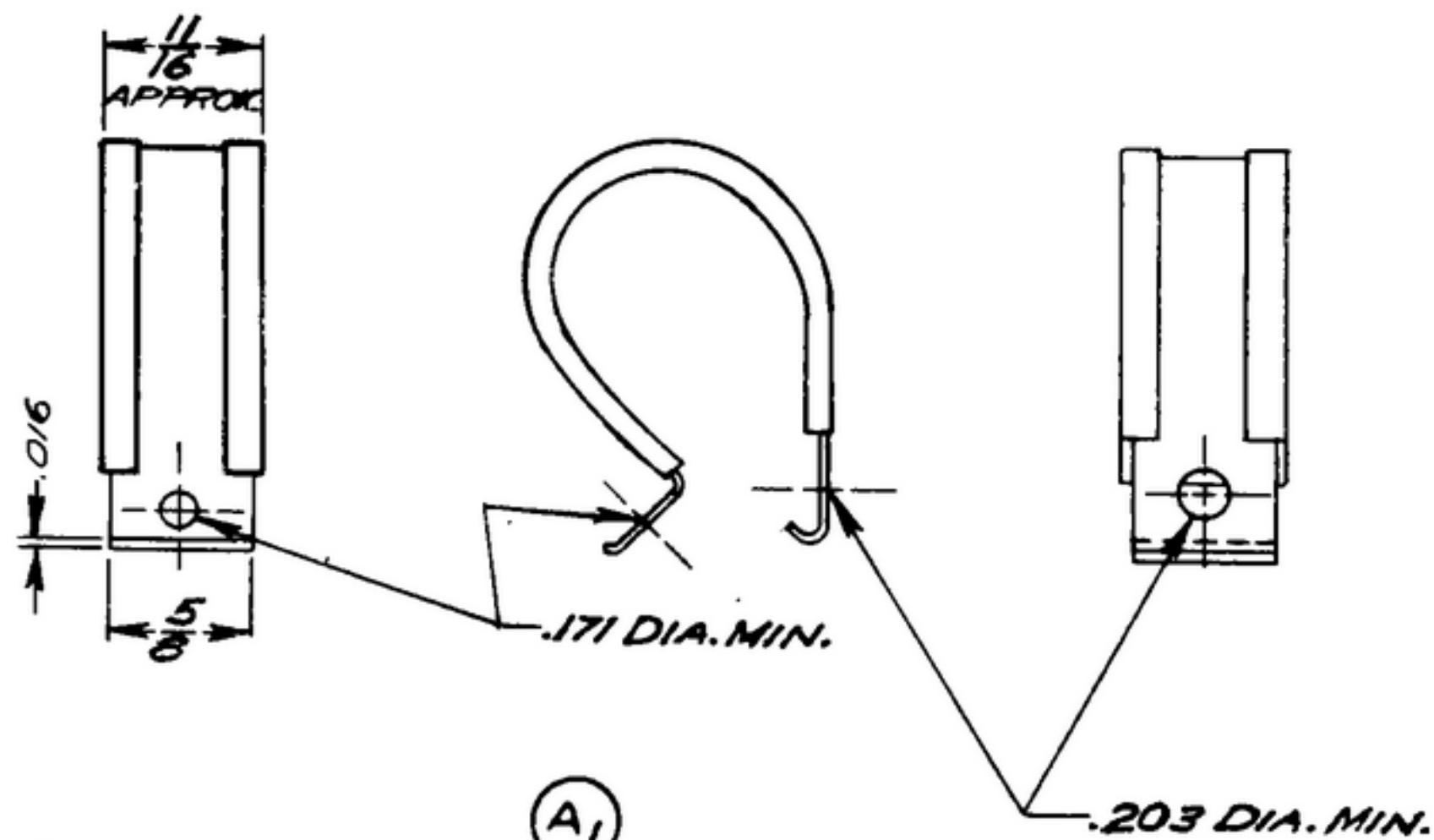
NOTICE: WHEN GOVERNMENT DRAWINGS, SPECIFICATIONS, OR OTHER DATA ARE USED FOR ANY PURPOSE OTHER THAN IN CONNECTION WITH A DEFINITELY RELATED GOVERNMENT PROCUREMENT OPERATION, THE UNITED STATES GOVERNMENT THEREBY INCURS NO RESPONSIBILITY FOR ANY OBLIGATION WHATSOEVER, AND THE FACT THAT THE GOVERNMENT MAY HAVE FORMULATED, FURNISHED, OR IN ANY WAY SUPPLIED THE SAID DRAWINGS, SPECIFICATIONS, OR OTHER DATA IS NOT TO BE REGARDED AS IMPLICATION OR OTHERWISE AS IN ANY MANNER LICENSING THE HOLDER OR ANY OTHER PERSON OR CORPORATION, OR CONVEYING ANY RIGHTS OR PERMISSION TO MANUFACTURE, USE, OR SELL ANY PATENTED INVENTION THAT MAY IN ANY WAY BE RELATED THERETO.

THIS DOCUMENT HAS BEEN PURCHASED BY THE GOVERNMENT AND MAY BE REPRODUCED AND USED IN CONNECTION WITH ANY GOVERNMENT PROCUREMENT OR MAINTENANCE OPERATION.

* FOR INFORMATION ONLY. CONTRACTOR MAY AT HIS OPTION DEVIATE FROM THESE PROCESS DETAILS.

~~*SWE APPROVAL~~
~~SYM PR10042-9~~

REVISIONS			
SYM	DESCRIPTION	DATE	APPROVAL
A ₂	A ₁ - WAS PART # A3044-2 A ₂ - ADDED APPL. SM-D-343619	4 NOV. 59	42428-PC-59-A1-51 REV'D PME



NOTES:

1. PART MAY BE #A3044-2-92 AS SUPPLIED BY TINNEMAN PRODUCTS CORP, CLEVELAND, OHIO, OR EQUAL, PROVIDING IT MEETS THE FOLLOWING REQUIREMENTS & DIMENSIONS SHOWN.

MATERIAL: PLAIN ALUMINUM

INSULATION: FLAME RESISTANT EXTRUDED SYNTHETIC CHANNEL 1/32 THICK.

SIZE: 5/16 (AREA DIA.)

A₂

COLLINS PART NO.	ITEM	REQD	PART NO.	DESCRIPTION	MATL	MATL SPEC
LIST OF MATERIAL						
COLLINS PART NO. 559-042-002						

			DRAWN <i>R.B.B.</i>	CHECKED <i>[Signature]</i>	APPROVED	-COLLINS RADIO CO. -SUGAR RAPIDS, IOWA- 1421A-PH-51-93	DEPARTMENT OF THE ARMY SIGNAL CORPS ENGINEERING LABORATORIES FORT MONMOUTH NEW JERSEY
			UNLESS OTHERWISE SPECIFIED: DECIMAL DIMENSIONS INCLUDING HOLE SIZES MAY VARY ±.005 FRACTIONAL DIMENSIONS INCLUDING HOLE SIZES MAY VARY ±1/64 MACHINED ANGLES MAY VARY ±.1° SHEARED ANGLES MAY VARY ±.25° BROKEN ANGLES MAY VARY ±.1° ECCENTRICITY BETWEEN ANY DIAMETERS ON THE SAME CENTERLINE SHALL NOT EXCEED .010 TOTAL INDICATOR READING. ALL DIMENSIONS ARE FINISH DIMENSIONS INCLUDING APPLIED FINISH AND ARE GIVEN IN INCHES.				
SM-D-343619						SIGNAL CORPS	SM-B-249200
558-0492-004			SM-D-249140 SC-DL-248775			REVIEWED <i>PME</i>	
COLLINS NO. <i>QTY</i> NEXT ASSY USED ON			APPLICATION			APPROVED <i>HLV</i> <i>PME</i>	
						DATE <i>11 JAN 56</i> SCALE <i>1/1</i>	