

EQUIP. TYPE: 23909/4102 EXP. NO. \_\_\_\_\_

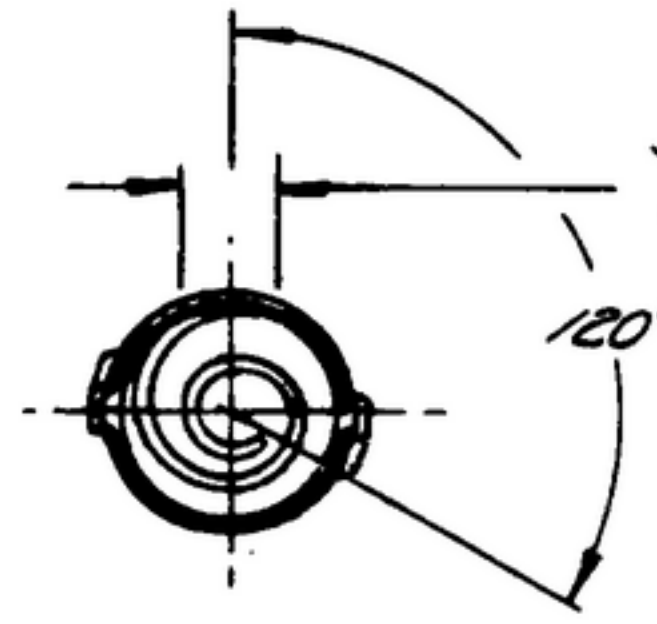
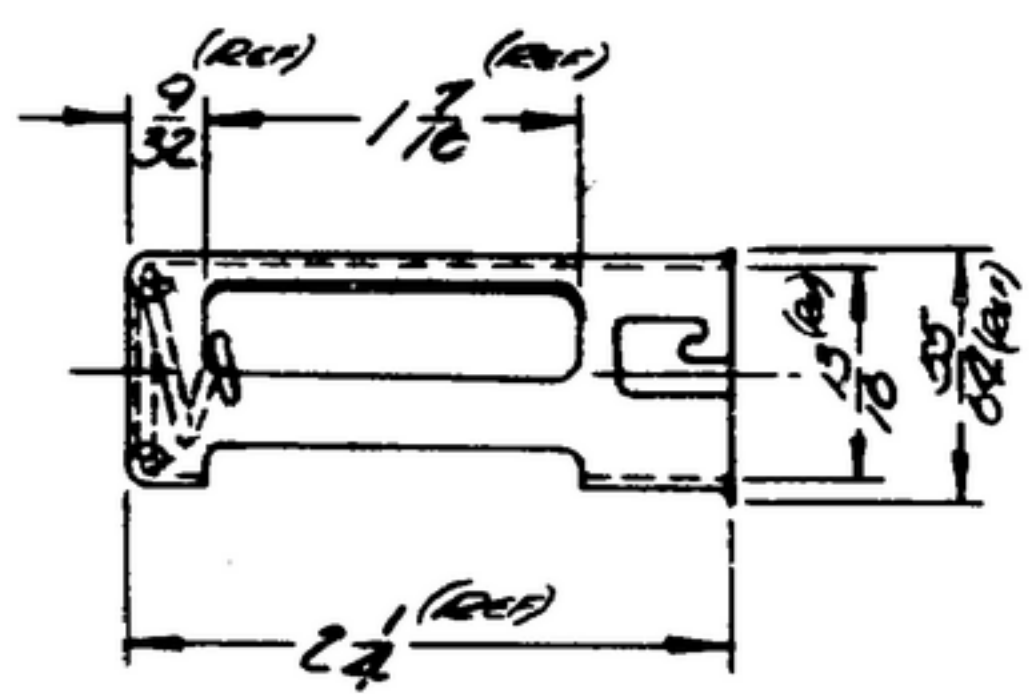
506 184 0137 00

NOTICE: WHEN GOVERNMENT DRAWINGS, SPECIFICATIONS, OR OTHER DATA ARE USED FOR ANY PURPOSE OTHER THAN IN CONNECTION WITH A DEFINITELY RELATED GOVERNMENT PURCHASE OR OPERATION, THE UNITED STATES GOVERNMENT THEREBY ASSUMES NO RESPONSIBILITY FOR ANY OBLIGATION WHATSOEVER, AND THE FACT THAT THE GOVERNMENT MAY HAVE FORMULATED, PROVIDED, OR IN ANY WAY SUPPLIED THE SAID DRAWINGS, SPECIFICATIONS, OR OTHER DATA IS NOT TO BE REGARDED AS IMPLICATION OR ENDORSEMENT AS IN ANY MANNER LIMITING THE RIGHTS OR ANY OTHER PERSON OR ORGANIZATION, OR DENYING ANY RIGHTS OR PERMISSION TO MANUFACTURE, USE, OR SELL ANY PATENTED INVENTION THAT MAY IN ANY WAY BE RELATED THERETO.

THIS DOCUMENT HAS BEEN PURCHASED BY THE GOVERNMENT AND MAY BE REPRODUCED AND USED IN CONNECTION WITH ANY GOVERNMENT PURCHASE OR MAINTENANCE OPERATION.

\* FOR INFORMATION ONLY. CONTRACTOR MAY AT HIS OPTION DEVIATE FROM THESE PROCESS DETAILS.

REVISIONS			
SYM	DESCRIPTION	DATE	APPROVAL



$\frac{9}{32}$  MIN  
 $\frac{3}{8}$  MAX  
 BETWEEN SLOTS; TYP 3 PLACES (REF)

NOTES:  
 1. PART MAY BE #16G 14631 AS SUPPLIED BY CINCH MFG CO, CHICAGO, ILL, OR EQUAL, PROVIDED IT MEETS THE FOLLOWING REQUIREMENTS & DIMENSIONS SHOWN. PART MODIFIED BY ADDING FINISH.

DESCRIPTION: TUBE SHIELD WITH VENTILATING SLOTS; FOR USE WITH SHIELDED SOCKETS.  
 MATERIAL: DIA 3.002 BRASS  
 FINISH: M352 PER SPEC MIL-F-14072.

~~\* WHEN PART NO. APPEARS AS 559 0129 9 C, MILITARY SOURCE INSPECTION IS REQUIRED.~~

COLLINS PART NO.	ITEM	QTY	PART NO.	DESCRIPTION	MATL	MATL-SPEC
------------------	------	-----	----------	-------------	------	-----------

LIST OF MATERIAL COLLINS PART NO. 559 0129 9 C

DRAWN <i>RDE</i>				CHECKED <i>BG</i>		APPROVED		COLLINS-RADIS-00 DESAS-SAFZS-IOWA <i>14214-PH-51-93</i>		DEPARTMENT OF THE ARMY SIGNAL CORPS ENGINEERING LABORATORIES FORT MONMOUTH NEW JERSEY	
UNLESS OTHERWISE SPECIFIED: DECIMAL DIMENSIONS INCLUDING HOLE SIZES MAY VARY ±.005 FRACTIONAL DIMENSIONS INCLUDING HOLE SIZES MAY VARY ±1/64 MACHINED ANGLES MAY VARY ±.1° SHEARED ANGLES MAY VARY ±.25° "BROKEN ANGLES MAY VARY ±1." ECCENTRICITY BETWEEN ANY DIAMETERS ON THE SAME CENTERLINE SHALL NOT EXCEED .010 TOTAL INDICATOR READING. ALL DIMENSIONS ARE FINISH DIMENSIONS INCLUDING APPLIED FINISH AND ARE GIVEN IN INCHES.				SIGNAL CORPS		REVIEWED <i>PME</i>		APPROVED <i>HLV</i> <i>PME</i>			
APPLICATION				DATE <i>10 SEPT 58</i>		SCALE <i>1/1</i>				<i>SM-B-249207</i>	
-COLLINS NO. - QTY - NEXT ASSY - USED ON											

WHEN REFERRING TO THIS DRAWING STATE DRAWING NO., APPLICABLE ISSUE SYMBOL, IF ANY, AND DATE