

EQUIP. TYPE **F390A/JRR** EXP. NO.

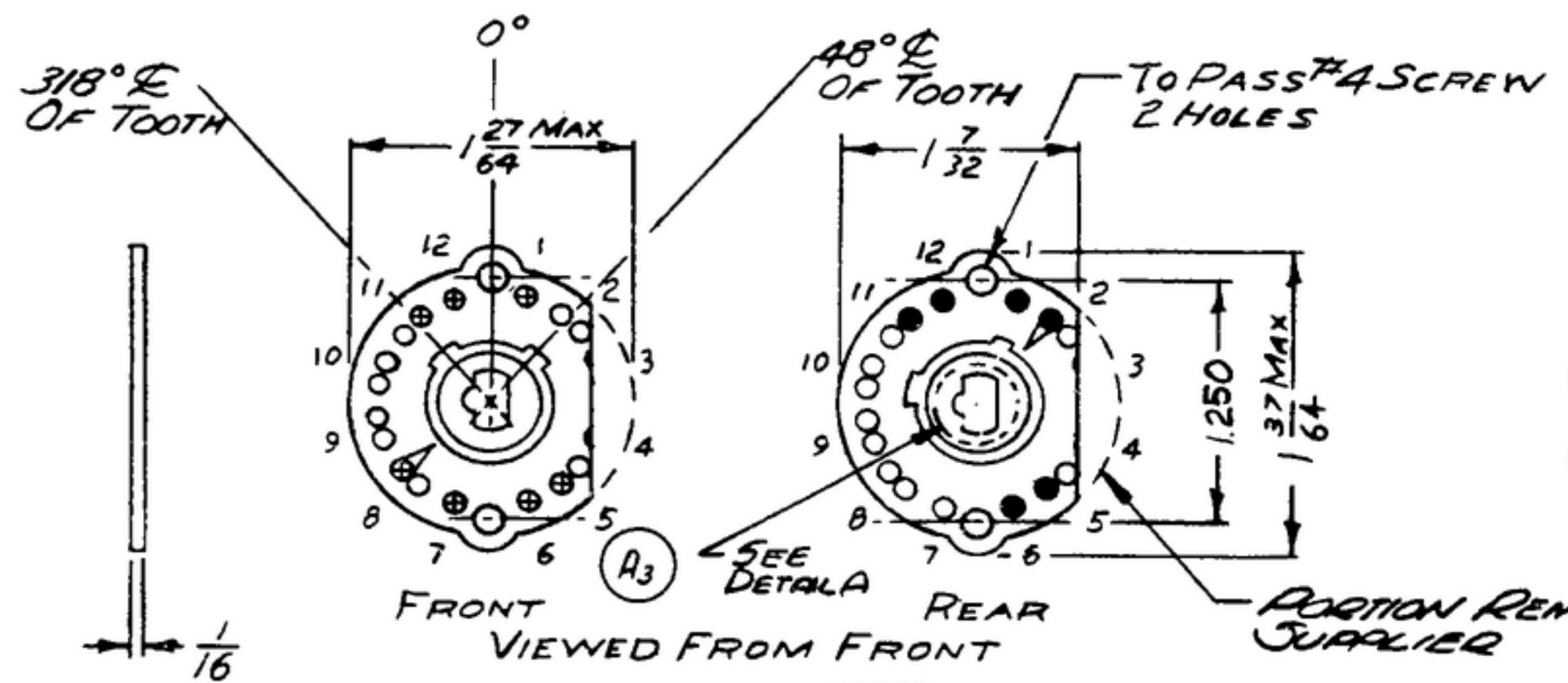
COL 269172900

NOTICE: WHEN GOVERNMENT DRAWINGS, SPECIFICATIONS, OR OTHER DATA ARE USED FOR ANY PURPOSE OTHER THAN IN CONNECTION WITH A DEFINITELY RELATED GOVERNMENT PROCUREMENT OPERATION, THE UNITED STATES GOVERNMENT THEREBY INCURS NO RESPONSIBILITY NOR ANY OBLIGATION WHATSOEVER, AND THE FACT THAT THE GOVERNMENT MAY HAVE FORMULATED, FURNISHED, OR IN ANY WAY SUPPLIED THE SAID DRAWINGS, SPECIFICATIONS, OR OTHER DATA IS NOT TO BE REGARDED BY IMPLICATION OR OTHERWISE AS IN ANY MANNER LICENSING THE HOLDER OR ANY OTHER PERSON OR CORPORATION, OR CONVEYING ANY RIGHTS OR PERMISSION TO MANUFACTURE, USE, OR SELL ANY PATENTED INVENTION THAT MAY IN ANY WAY BE RELATED THEREBY.

THIS DOCUMENT HAS BEEN PURCHASED BY THE GOVERNMENT AND MAY BE REPRODUCED AND USED IN CONNECTION WITH ANY GOVERNMENT PROCUREMENT OR MAINTENANCE OPERATION.

*FOR INFORMATION ONLY. CONTRACTOR MAY AT HIS OPTION DEVIATE FROM THESE PROCESS DETAILS.

REVISIONS				
SYM	DESCRIPTION	DATE	APPROVAL	
*SWE APPROVAL				
SYM PR10042/10	(1) WAS .188 & "REF" ADDED	17	42428-PC-59	
A	(2) "REF" ADDED	OCT	REVD	PME
A	CA#84875	60	REVD	PME
B	(1) - DELETED NOTE. (2) DELETED NOTE 2.	8 DEC	4248-PC-59	
	(3) - ADDED NOTE 3. (4) - ADDED NOTE 4.	60	REVD	PME
	(5) - "REF" REMOVED 2 PLACES, .188 WAS .170 .187 .191			

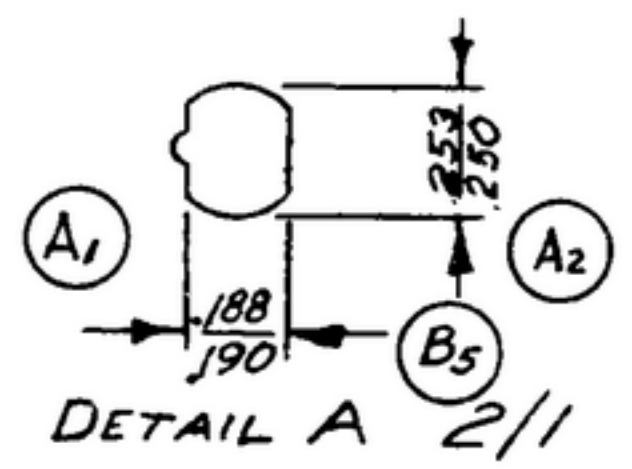


- (B3) 3. CENTER HOLE MUST BE PERPENDICULAR (90°) TO WAFER WITHIN ±1°
- (B4) 4. ALL CONTACTS MUST BE LOCATED IN POSITIONS SHOWN. CENTERS OF ENGAGEMENT AREAS OF CONTACT CLIPS MUST BE MAINTAINED A 15° AND/OR 30° STARTING FROM WAFER MOUNTING CENTERS, TOLERANCES NON CUMULATIVE.

NOTES:
 1. PART MAY BE #68064+K, AS SUPPLIED BY OAK MFG. CO., CHICAGO, ILL., OR EQUAL, PROVIDING IT MEETS THE FOLLOWING REQUIREMENTS AND DIMENSIONS SHOWN.

- KEY TO SYMBOLS
- ⊕ SHORT CLIP
 - ⊕ LONG CLIP
 - SHORT CLIP-REVERSED
 - LONG CLIP-REVERSED
 - NO CLIP

DESCRIPTION: 2 CIRCUIT (2 POLE), 12 POSITION ROTARY WAFER SWITCH SECTION.
 INSULATION: STATOR--GLASS SILICONE, ONE SIDE SANDED (PANELYTE 130 AS SUPPLIED BY ST. REGIS PAPER CO., PANELYTE DIV., RICHMOND, IND., OR EQUIVALENT) TREATED WITH A SILICONE VARNISH. ROTOR--POLYMONOCHLOROTRIFLUOROETHYLENE.
 CLIPS: SPRING SILVER ALLOY, BENT 60° - 75°.
 ROTOR BLADES: SHORTING TYPE, COIN SILVER ALLOY.
 *PRODUCTION TESTING SHALL CONSIST OF THE FOLLOWING: VISUAL INSPECTION, INDEXING AND FUNCTION.
 OPERATING TEMPERATURE RANGE: -55°C TO +100°C.
 EVIDENCE OF CRACKING OR CHIPPING OF THE MATERIAL SHALL BE CAUSE FOR REJECTION.
 *SAMPLE MUST BE SUBMITTED TO CONTRACTOR'S ENGINEERING DEPARTMENT FOR APPROVAL BEFORE SHIPMENT OF PRODUCTION UNITS.



- (B1)
- (B2)
- (A3)

COLLINE PART NO.	ITEM	REQD	PART NO.	DESCRIPTION	DATE	MATL QTY
LIST OF MATERIAL						
COLLINE PART NO. 558-0178-002						

DRAWN <i>Hamer</i>				CHECKED <i>[Signature]</i>		APPROVED		COLLINE RADIO CO. OSCAR PARSONS-IOWA 14214-PH-51-93		DEPARTMENT OF THE ARMY SIGNAL CORPS ENGINEERING LABORATORIES FORT MONMOUTH NEW JERSEY	
UNLESS OTHERWISE SPECIFIED: DECIMAL DIMENSIONS INCLUDING HOLE SIZES MAY VARY ±.005 FRACTIONAL DIMENSIONS INCLUDING HOLE SIZES MAY VARY ±1/64 MACHINED ANGLES MAY VARY ±.1° SHEARED ANGLES MAY VARY ±.25° BROKEN ANGLES MAY VARY ±.1° ECCENTRICITY BETWEEN ANY DIAMETERS ON THE SAME CENTERLINE SHALL NOT EXCEED .010 TOTAL INDICATOR READING. ALL DIMENSIONS ARE FINISH DIMENSIONS INCLUDING APPLIED FINISH AND ARE GIVEN IN INCHES.				REVIEWED <i>PME</i>		APPROVED <i>HLV</i> <i>PME</i>		SECTION ROTARY SWITCH			
558-0451-004 - SM-D-249100 SC-DL-248775				DATE <i>12 JAN 56</i>		SCALE <i>1/1</i>					
APPLICATION				NEXT ASSY		USED ON					