

EQUIP. TYPE *63904* DIA. NO.

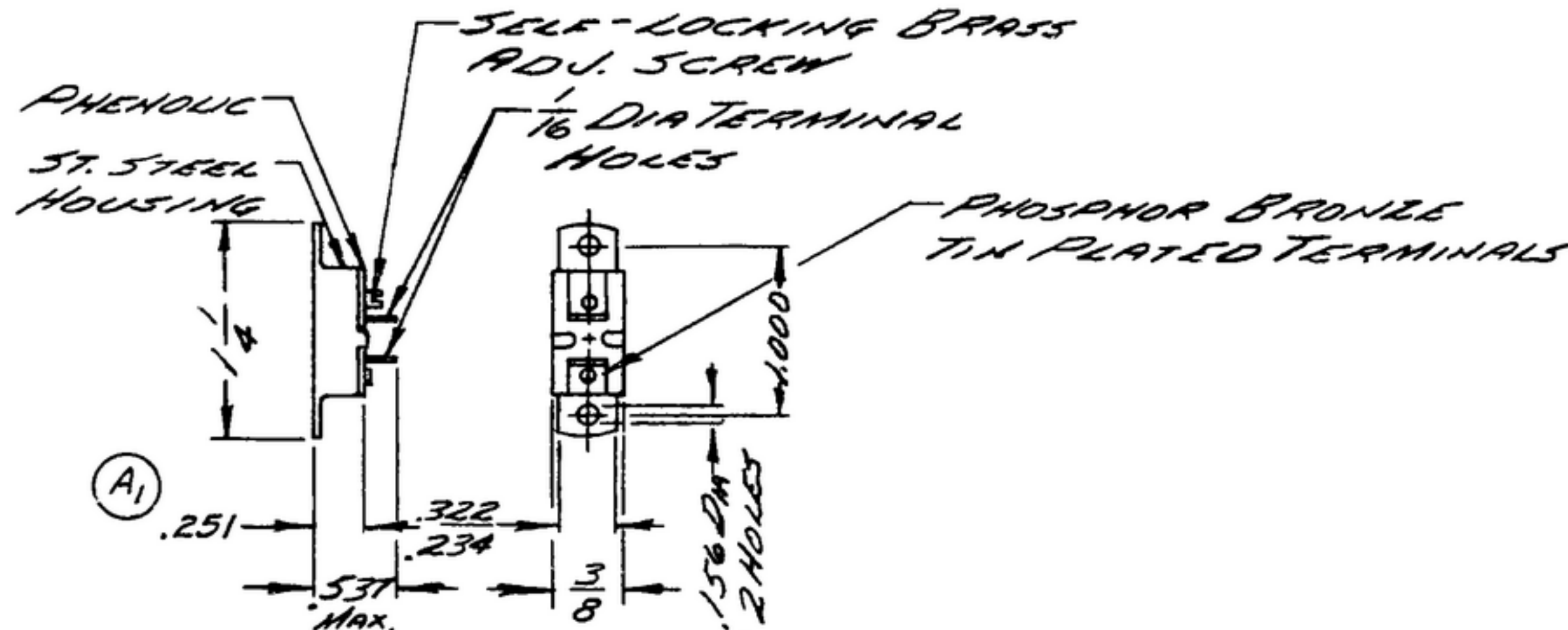
*606 292 0127 00*

NOTICE: WHEN GOVERNMENT DRAWINGS, SPECIFICATIONS, OR OTHER DATA ARE USED FOR ANY PURPOSE OTHER THAN IN CONNECTION WITH A DEFINITELY RELATED GOVERNMENT PROCUREMENT OPERATION, THE UNITED STATES GOVERNMENT THEREBY INCURS NO RESPONSIBILITY NOR ANY OBLIGATION WHATSOEVER; AND THE FACT THAT THE GOVERNMENT MAY HAVE FORMULATED, FURNISHED, OR IN ANY WAY SUPPLIED THE SAID DRAWINGS, SPECIFICATIONS, OR OTHER DATA IS NOT TO BE REGARDED BY IMPLICATION OR OTHERWISE AS IN ANY MANNER LICENSEING THE HOLDER OR ANY OTHER PERSON OR CORPORATION, OR CONVEYING ANY RIGHTS OR PERMISSION TO MANUFACTURE, USE, OR SELL ANY PATENTED INVENTION THAT MAY IN ANY WAY BE RELATED THERETO.

THIS DOCUMENT HAS BEEN PURCHASED BY THE GOVERNMENT AND MAY BE REPRODUCED AND USED IN CONNECTION WITH ANY GOVERNMENT PROCUREMENT OR MAINTENANCE OPERATION.

\* FOR INFORMATION ONLY. CONTRACTOR MAY AT HIS OPTION DEVIATE FROM THESE PROCESS DETAILS.

REVISIONS			
SYM	DESCRIPTION	DATE	APPROVAL
A <sub>2</sub>	(1) WAS 1/32 (2) NOTE 1 WAS PN 3200-1	21 SEP 65	P.H.B. R.P. EDB



PLANES, MOTION TO BE APPLIED IN EACH PLANE FOR A PERIOD OF 2 HOURS. AT THE COMPLETION OF THIS TEST THE PART SHALL CONFORM TO THE REQUIREMENTS OF THIS SPECIFICATION.

**SHOCK:** PART SHALL MEET ALL THE REQUIREMENTS SPECIFIED ON COMPLETION OF A SHOCK TEST IN ACCORDANCE WITH MILITARY STANDARD 202, METHOD 202, CONSISTING OF 18 IMPACT SHOCKS OF 15 G'S, EACH SHOCK HAVING A TIME DURATION OF  $11 \pm 1$  MILLISECONDS. THE SHOCKS SHALL BE APPLIED ALONG ALL THREE OF THE PRINCIPAL AXES, THREE SHOCKS IN EACH DIRECTION ALONG EACH AXIS

**THERMOSTATS** SUPPLIED UNDER THIS SPECIFICATION SHALL BE PERMANENTLY SET TO THE NOMINAL OPERATING TEMPERATURE. ADJUST SCREW SHALL BE LOCKED IN SAME MANNER TO PREVENT CHANGES IN ADJUSTMENT.

**MOUNTING** SCREWS AND SPRINGS SHALL BE SUPPLIED WITH UNITS. SCREWS SHALL BE 4-40 NC-2A.

**NOTES:**  
 1. PART MAY BE NO. 32410-0, AS SUPPLIED BY FENVAL INC., ASHLAND, MASS., OR EQUAL, PROVIDING IT MEETS THE FOLLOWING REQUIREMENTS AND DIMENSIONS SHOWN.

**DESCRIPTION:** BI-METALLIC STRIP TYPE THERMOSTATIC SWITCH.  
**CONTACT ARRANGEMENT:** CONTACTS OPEN ON TEMPERATURE RISE.  
**ELECTRICAL RATINGS:** 115 VOLTS A.C.--2.5 AMP., 28 VOLTS D.C.--2.0 AMP.  
**NOMINAL OPERATING TEMPERATURE:**  $85^{\circ}\text{C} \pm 3^{\circ}\text{C}$ .  
**DIFFERENTIAL:**  $2^{\circ}\text{C}$  MAXIMUM.  
**VIBRATION:** PART SHALL BE CAPABLE OF WITHSTANDING THE VIBRATION TEST SPECIFIED IN MILITARY STANDARD 202, METHOD 201, IN EACH OF 3 MUTUALLY PERPENDICULAR

COLLINE PART NO.	ITEM	REQD	PART NO.	DESCRIPTION	MATL	MATL SPEC
LIST OF MATERIAL						
COLLINE PART NO. <i>559 0200 002</i>						

DRAWN <i>RDE</i>		CHECKED <i>BG</i>		APPROVED		COLLINE RADIO CO. CEDAR RAPIDS, IOWA <i>14214 - PH</i> <i>51-93</i>		DEPARTMENT OF THE ARMY SIGNAL CORPS ENGINEERING LABORATORIES FORT MONMOUTH NEW JERSEY	
UNLESS OTHERWISE SPECIFIED: DECIMAL DIMENSIONS INCLUDING HOLE SIZES MAY VARY $\pm .008$ FRACTIONAL DIMENSIONS INCLUDING HOLE SIZES MAY VARY $\pm 1/64$ MACHINED ANGLES MAY VARY $\pm .1^{\circ}$ SHEARED ANGLES MAY VARY $\pm .25^{\circ}$ BROKEN ANGLES MAY VARY $\pm .1^{\circ}$ ECCENTRICITY BETWEEN ANY DIAMETERS ON THE SAME CENTERLINE SHALL NOT EXCEED .010 TOTAL INDICATOR READING. ALL DIMENSIONS ARE FINISH DIMENSIONS INCLUDING APPLIED FINISH AND ARE GIVEN IN INCHES.		SIGNAL CORPS.		REVIEWED <i>PME</i>		<i>SWITCH-THERMOSTATIC</i>			
559 0207 00 / <i>SM-C-249031 JCDL-20870</i>		APPROVED <i>HLV</i> <i>PME</i>		DATE <i>21 JAN 58</i> SCALE <i>1/1</i>					
COLLINE NO. <i>953</i>		NEXT ASSY		USED ON		<i>5M-B-249248</i>			
APPLICATION									