

EQUIP. TYPE *D-370A/JUR* EXP. NO.

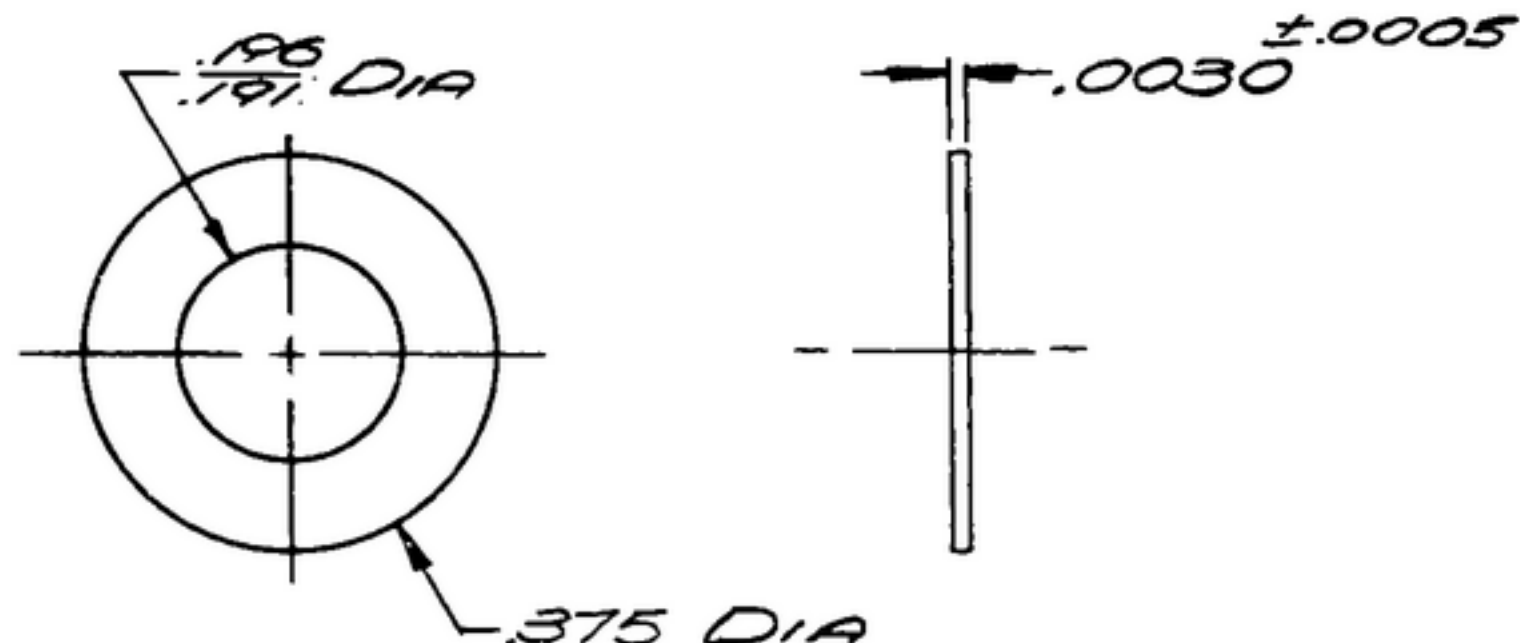
*60c-504-0737-003*

NOTICE: WHEN GOVERNMENT DRAWINGS, SPECIFICATIONS, OR OTHER DATA ARE USED FOR ANY PURPOSE OTHER THAN IN CONNECTION WITH A DEFINITELY RELATED GOVERNMENT PROCUREMENT OPERATION, THE UNITED STATES GOVERNMENT THEREBY INCURS NO RESPONSIBILITY FOR ANY OBLIGATION WHATSOEVER; AND THE FACT THAT THE GOVERNMENT MAY HAVE FORMULATED, FURNISHED, OR IN ANY WAY SUPPLIED THE SAID DRAWINGS, SPECIFICATIONS, OR OTHER DATA IS NOT TO BE REGARDED BY IMPLICATION OR OTHERWISE AS IN ANY MANNER LICENSING THE HOLDER OR ANY OTHER PERSON OR CORPORATION, OR CONVEYING ANY RIGHTS OR PERMISSION TO MANUFACTURE, USE, OR SELL ANY PATENTED INVENTION THAT MAY IN ANY WAY BE RELATED THERETO.

THIS DOCUMENT HAS BEEN PURCHASED BY THE GOVERNMENT AND MAY BE REPRODUCED AND USED IN CONNECTION WITH ANY GOVERNMENT PROCUREMENT OR MAINTENANCE OPERATION.

\* FOR INFORMATION ONLY. CONTRACTOR MAY AT HIS OPTION DEVIATE FROM THESE PROCESS DETAILS.

REVISIONS			
SYM	DESCRIPTION	DATE	APPROVAL
<del>SWE APPROVAL</del>			
<del>SYM PR10042-6</del>			
A <sub>2</sub>	A <sub>1</sub> ADDED TO FINISH NOTE IRIDITE NO.7 A <sub>2</sub> ADDED APPL SM-D-343600	15 OCT 59	42428-PC-69 M-51 PME



(A<sub>1</sub>)

NOTES:

- MATERIAL: BRASS, COMPOSITION 1, TEMPER 1/2 H, PER SPEC. QQ-B-613.
- FINISH: CHEMICAL POLISH PER IRIDITE NO.7 METCOTE PROCESS BY ALLIED RESEARCH PRODUCTS, INC., BALTIMORE, MD, OR EQUAL. (\*572167)  
\* ~~COLLINS 580 0034 00~~

*(\* SAME AS SWE 572BA9-3A)*

(A<sub>2</sub>)

COLLINS PART NO.	ITEM	REQD	PART NO.	DESCRIPTION	MATL	MATL SPEC
LIST OF MATERIAL						
COLLINS PART NO. <i>558 0552002</i>						

				DRAWN <i>RAW</i>	CHECKED <i>RM</i>	APPROVED	COLLINS RADIO CO. DESAR, IOWA <i>14214-DH-51-93</i>		<b>WASHER</b>	DEPARTMENT OF THE ARMY SIGNAL CORPS ENGINEERING LABORATORIES  FORT MONMOUTH NEW JERSEY
				UNLESS OTHERWISE SPECIFIED: DECIMAL DIMENSIONS INCLUDING HOLE SIZES MAY VARY $\pm .005$ FRACTIONAL DIMENSIONS INCLUDING HOLE SIZES MAY VARY $\pm 1/64$ MACHINED ANGLES MAY VARY $\pm .1^\circ$ SHEARED ANGLES MAY VARY $\pm .25^\circ$ BROKEN ANGLES MAY VARY $\pm .1^\circ$ ECCENTRICITY BETWEEN ANY DIAMETERS ON THE SAME CENTERLINE SHALL NOT EXCEED .010 TOTAL INDICATOR READING. ALL DIMENSIONS ARE FINISH DIMENSIONS INCLUDING APPLIED FINISH AND ARE GIVEN IN INCHES.			SIGNAL CORPS			
							REVIEWED <i>PME</i>			
							APPROVED <i>HLV</i> <i>PME</i>			
							DATE <i>7 MAY 56</i>	SCALE <i>4/1</i>		<b>5MB-283253</b>
				APPLICATION						