

NOTICE: WHEN GOVERNMENT DRAWINGS, SPECIFICATIONS, OR OTHER DATA ARE USED FOR ANY PURPOSE OTHER THAN IN CONNECTION WITH A GOVERNMENT RELATED GOVERNMENT PROCUREMENT OPERATION, THE UNITED STATES GOVERNMENT THEREBY INCURS NO RESPONSIBILITY NOR ANY OBLIGATION WHATSOEVER; AND THE FACT THAT THE GOVERNMENT MAY HAVE FORMULATED, FURNISHED, OR IN ANY WAY SUPPLIED THE SAID DRAWINGS, SPECIFICATIONS, OR OTHER DATA IS NOT TO BE REGARDED BY IMPLICATION OR OTHERWISE AS IN ANY MANNER LICENSING THE HOLDER OR ANY OTHER PERSON OR CORPORATION, OR CONVEYING ANY RIGHTS OR PERMISSION TO MANUFACTURE, USE, OR SELL ANY PATENTED INVENTION THAT MAY IN ANY WAY BE RELATED THERETO.

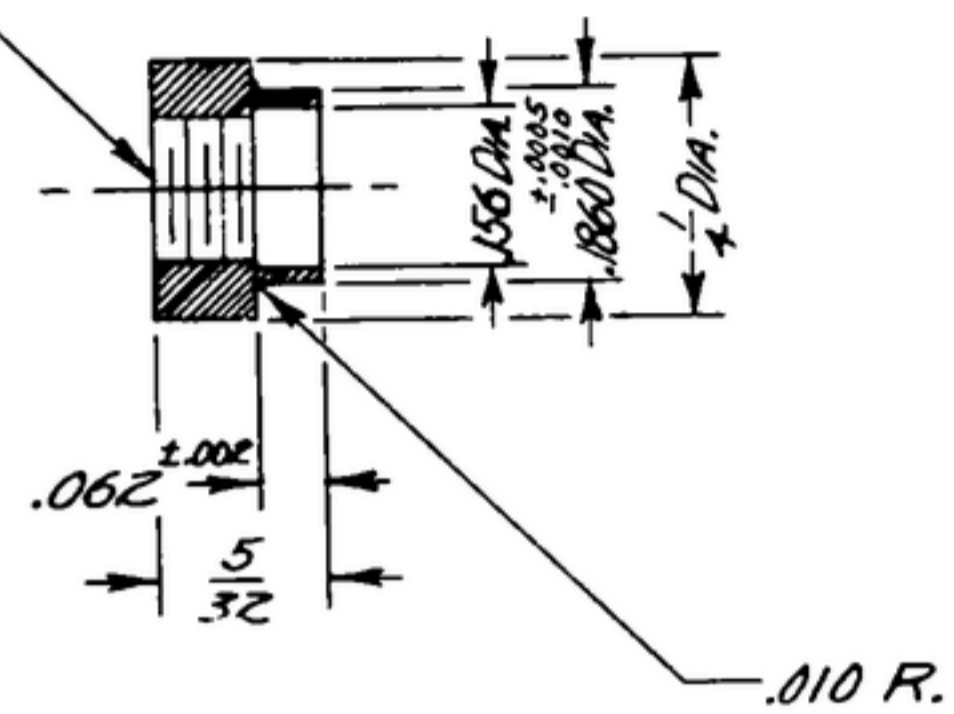
THIS DOCUMENT HAS BEEN PURCHASED BY THE GOVERNMENT AND MAY BE REPRODUCED AND USED IN CONNECTION WITH ANY GOVERNMENT PROCUREMENT OR MAINTENANCE OPERATION.

\*FOR INFORMATION ONLY. CONTRACTOR MAY AT HIS OPTION DEVIATE FROM THESE PROCESS DETAILS.

ORIG ISSUE A REVISIONS 27 AUG 56

SYM	DESCRIPTION	DATE	APPROVAL
-----	-------------	------	----------

6-32 NC-2B



CRES CLASS 7, TYPE A, PER QQ-5-763  
 NOTES:  
 1. FINISH: E300 PER SPEC MIL-F-14072.  
 2. ALL THREADS PER H2B.

SM-D-58485			
SM-D-58486			
SM-D-58487		SM-D-33314	
SM-D-58488		SM-D-33313	
SM-D-58489		SM-D-33312	
SM-D-58490		SM-D-33311	
SM-D-58491		SM-D-33310	
SM-D-58492		SM-D-33309	
SM-D-58493		SM-D-33308	
SM-D-58496		SM-D-33307	
SM-D-58719		SM-D-33306	
SM-D-58760		SM-D-33305	
SM-D-58781		SM-D-33304	
SM-D-58782	SC-GL-57147	SM-D-33207	SCGL-57655
NEXT ASSY	USED ON	NEXT ASSY	USED ON
APPLICATION		APPLICATION	

UNLESS OTHERWISE SPECIFIED  
 DIMENSIONS ARE IN INCHES  
 TOLERANCES ON  
 FRACTIONS DECIMALS ANGLES  
 $\pm \frac{1}{64}$   $\pm .005$

DET. NO.	ISS.	PART NO.	DESCRIPTION	QTY.	FINISHED SIZE	EXT. USED
LIST OF MATERIAL						
			NUT			
			REVIEWED XXX			
			APPROVED R.F.X.			
			DATE 27 AUG 56	SCALE 4/1		

DEPARTMENT OF THE ARMY  
 SIGNAL CORPS ENGINEERING  
 LABORATORIES

PORT MONMOUTH NEW JERSEY

SM-B-31956

WHEN REFERRING TO THIS DRAWING STATE DRAWING NO., APPLICABLE ISSUE SYMBOL, IF ANY, AND DATE.