

EQUIP. TYPE *R396ALVRF* PART NO.

*COL. 540-7489-002*

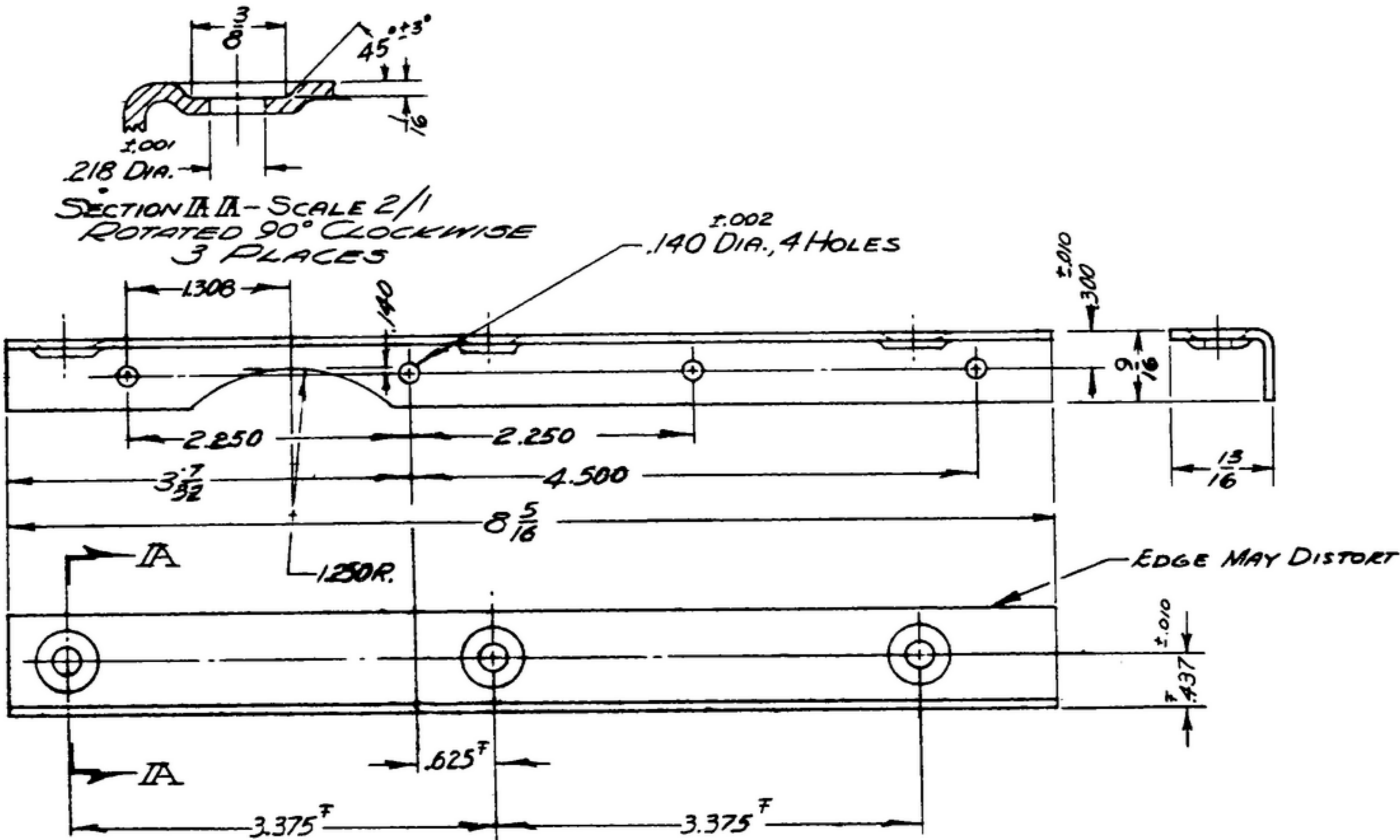
NOTICE: WHEN GOVERNMENT SPECIFICATIONS, OR OTHER DATA ARE USED FOR ANY PURPOSE OTHER THAN IN CONNECTION WITH A SPECIFICALLY RELATED SYSTEM, THE UNITED STATES GOVERNMENT THEREBY ASSUMES NO RESPONSIBILITY FOR ANY OMISSIONS, UNWARRANTED, AND THE FACT THAT THE GOVERNMENT MAY HAVE FORMULATED, FURNISHED, OR IN ANY WAY APPLIED THE SAID SPECIFICATIONS, OR OTHER DATA IN CONNECTION WITH ANY SPECIFIC SYSTEM OR OPERATION AS IF ANY ERRORS OR OMISSIONS THEREIN OR ANY OTHER PERSONS OR ORGANIZATION, OR CONTRACTORS ARE SUBJECT TO THE SAME, SHALL BE HELD AS NEGLIGENT OR NEGLIGENT THEREIN.

THIS DOCUMENT HAS BEEN PREPARED BY THE GOVERNMENT AND MAY BE REPRODUCED AND USED IN CONNECTION WITH ANY GOVERNMENT PROGRAM OR OPERATION.

FOR INFORMATION ONLY. CONTRACTOR MAY AT HIS OPTION DEVIATE FROM THESE PROCESS DETAILS.

SWF APPROVAL  
SYM *FR 10042-5*

REVISIONS			
SYM	DESCRIPTION	DATE	APPROVAL
A1	WAS 525;	9 OCT 59	42428-PC-59 -A1-51
A2	A2 ADDED APPL SM-D-343612		REV'D <i>PME</i>



(A1) ALUMINUM ALLOY 5052, TEMPER H32, PER SPEC QQ-A-318, .064 THICK  
FINISH: E513 PER SPEC MIL-F-14072  
\* COLLINS 580-0036-00

NOTES:  
1. ALL INSIDE BEND RADII 1/16.  
2. F TOL APPLIES TO HOLES. DIMPLES MAY VARY ± 1/64.

COLLINS PART NO.	ITEM	QTY	PART NO.	DESCRIPTION	DATE	DATE SPEC
LIST OF MATERIAL						
COLLINS PART NO. <i>558-0277-003</i>						

(A2)	COLLINS NO.	QTY	NEXT ASSY	USED ON	UNLESS OTHERWISE SPECIFIED: DECIMAL DIMENSIONS INCLUDING HOLE SIZES MAY VARY ±.005 FRACTIONAL DIMENSIONS INCLUDING HOLE SIZES MAY VARY ±1/64 MACHINED ANGLES MAY VARY ±.1° SHEARED ANGLES MAY VARY ±.25° BROKEN ANGLES MAY VARY ±.1° ECCENTRICITY BETWEEN ANY DIAMETERS ON THE SAME CENTERLINE SHALL NOT EXCEED .010 TOTAL INDICATOR READING. ALL DIMENSIONS ARE FINISH DIMENSIONS INCLUDING APPLIED FINISH AND ARE GIVEN IN INCHES.	DRAWN <i>ECS</i>	CHECKED <i>Williams</i>	APPROVED _____	COLLINS-RADIO-CO. 14214-PH-51-93 SIGNAL CORPS	BRACKET-LONG	DEPARTMENT OF THE ARMY SIGNAL CORPS ENGINEERING LABORATORIES FORT MONMOUTH NEW JERSEY	
	SM-D-343612	1				REVIEWED <i>PME</i>	APPROVED <i>HLV</i> <i>PME</i>	DATE 20 DEC 55	SCALE 1/1			
	558-0277-004	1	SM-D-248922	SC-DL-248775								
	APPLICATION											

SM-C-248928