

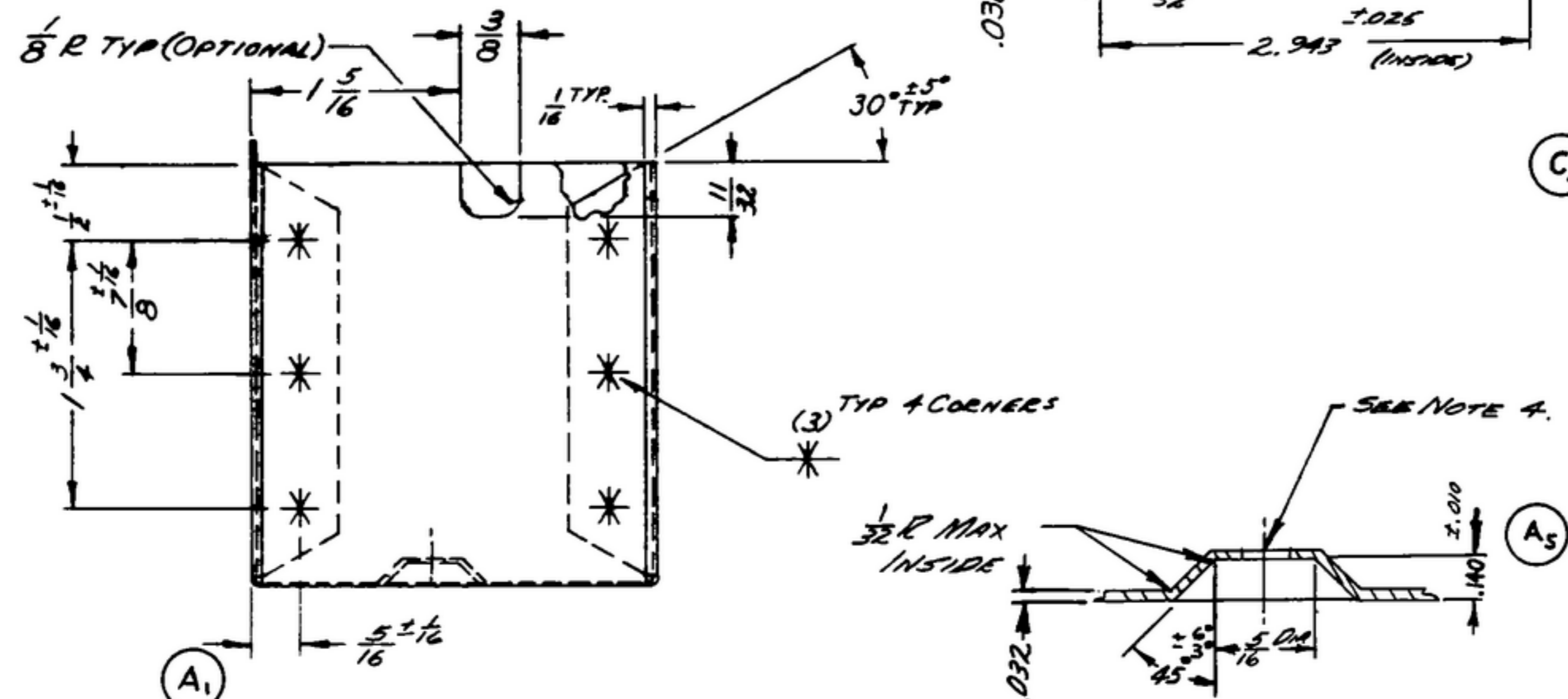
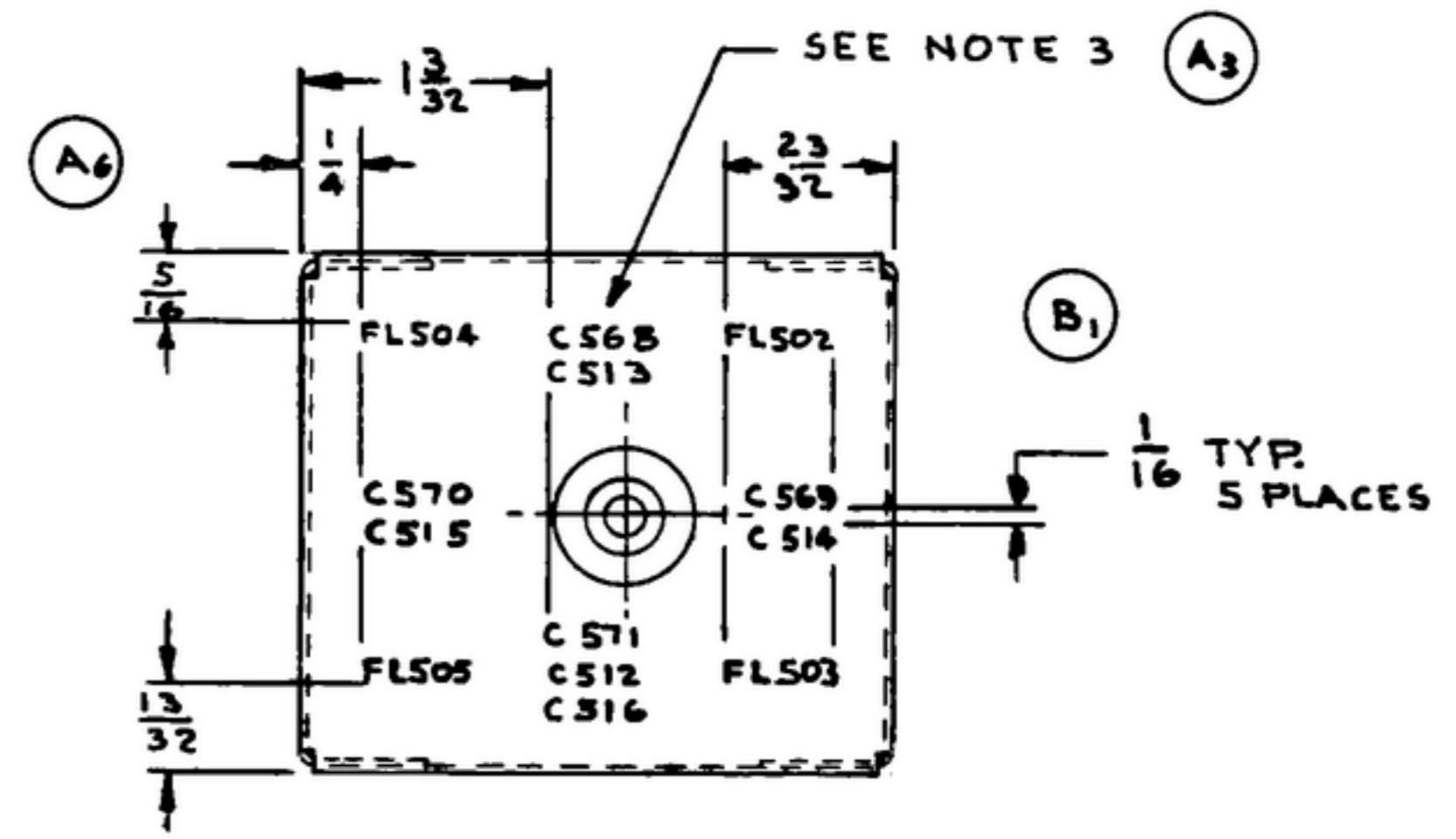
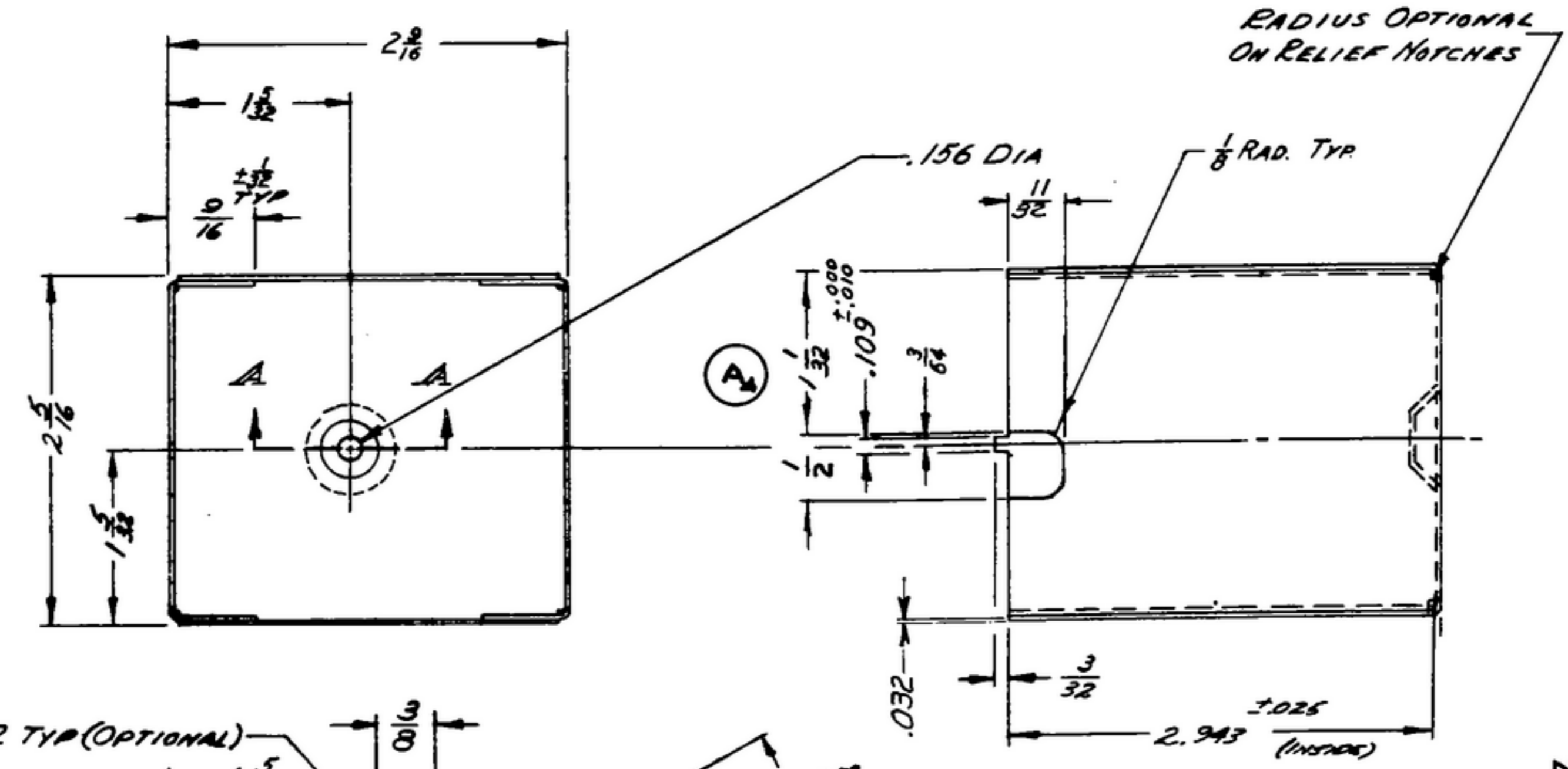
NOTICE: WHEN GOVERNMENT DRAWINGS, SPECIFICATIONS, OR OTHER DATA ARE USED FOR ANY PURPOSE OTHER THAN IN CONNECTION WITH A DEFINITELY RELATED GOVERNMENT PROCUREMENT OPERATION, THE UNITED STATES GOVERNMENT THEREBY INCURS NO RESPONSIBILITY AND ANY OBLIGATION WHATSOEVER; AND THE FACT THAT THE GOVERNMENT MAY HAVE FORMULATED, PROVIDED, OR IN ANY WAY SUPPLIED THE SAID DRAWINGS, SPECIFICATIONS, OR OTHER DATA IS NOT TO BE REGARDED AS IMPLICATION OR OTHERWISE AS IN ANY MANNER ENDORSING THE HOLDER OR ANY OTHER PERSON OR CORPORATION, OR OBSERVING ANY RIGHTS OR PRIVILEGES TO MANUFACTURE, USE, OR SELL ANY PATENTED INVENTION THAT MAY IN ANY WAY BE RELATED THEREBY.

THIS DOCUMENT HAS BEEN PUBLISHED BY THE GOVERNMENT AND MAY BE REPRODUCED AND USED IN CONNECTION WITH ANY GOVERNMENT PROCUREMENT OR MAINTENANCE OPERATION.

* FOR INFORMATION ONLY. CONTRACTOR MAY AT HIS OPTION DEVIATE FROM THESE PROCESS DETAILS.

SYM	DESCRIPTION	DATE	APPROVAL
C	(1) DELETED NOTE 5 (2) DELETED FIRST SENTENCE OF NOTE 8.	31 OCT 61	42428-PC-59 [RETD]

X SWE APPROVAL		REVISIONS			
SYM	PR10042-5	SYM	DESCRIPTION	DATE	APPROVAL
B	84810	A ₁	A ₁ 5052 WAS 525	4 NOV 59	42428-PC-59-A1-51 REV'D PME
		A ₂	A ₂ NOTE 3 WAS 'CHARACTERS SHALL BE BLACK AND MEET TEST REQUIREMENTS OF SPEC MIL-M-13231		
		A ₃	A ₃ SEE NOTE 3 WAS REF OF SILK SCREEN DRWG		
		A ₄	A ₄ 1 1/32, 1/2 WAS 1 3/32, 7/16		
		A ₅	A ₅ REVISED WITNESS LINE		
		A ₆	A ₆ DIMENSIONED SILK SCREENING		
		A ₇	A ₇ ADDED APPL SM-D-343620		
		A ₈	A ₈ MIL-W-6858 WAS MIL-W-6860		
B ₁	B ₁	B ₁ REDIMENSION SILK SCREENING OF CHARACTERS, C56B C513, C569, C514, C570, C515 C571, C512, C516	24 JUNE 60	42428-PC-59 REV'D PME	



- NOTES
1. ALL INSIDE BEND RADII 3/64 MAX
 2. WELDING SHALL BE IN ACCORDANCE WITH SPEC MIL-W-6858
 3. ~~SILK SCREENING TO BE LOCATED AS SHOWN~~ ALL CHARACTERS TO BE 3/32 HIGH GOTHIC TYPE PER SPEC MIL-M-13231, GROUP II. COLOR TO BE BLACK, COLOR CHIP #27038 PER FED. STD. 595 MARKING TO BE CENTRALLY LOCATED ± 1/32 UNLESS OTHERWISE SHOWN. COVER DESIGNATIONS WITH ONE (1) COAT VARNISH PER MIL-V-173 TYPE II
 4. DIMPLE MAY BE OFF CENTER LINE OF HOLE BY 1/32

ALUMINUM ALLOY 5052 TEMPER H32, PER SPEC QQ-A-318. SECTION A-A SCALE 2/1
FINISH: E513 PER SPEC MIL-F-14072.
* COLLINS 580 0036 00.

WHEN PART NO. APPEARS AS 588 0361 9-3 MILITARY SOURCE INSPECTION IS REQUIRED.

COLLINS PART NO.	ITEM	REQD	PART NO.	DESCRIPTION	MATL	MATL SPEC
588 0016 002	1	REF	SM-B-248792	SILK SCREEN COVER		

LIST OF MATERIAL COLLINS PART NO. 588 0361 003

APPLICATION			DRAWN	CHECKED	APPROVED	GOLLINS-RABIN CO. CEDAR RAPIDS, IOWA		DEPARTMENT OF THE ARMY SIGNAL CORPS ENGINEERING LABORATORIES	
			ECS	RA		1421A-PH-51-93	SIGNAL CORPS	FORT MONMOUTH NEW JERSEY	
						REVIEWED	PME	SM-C-249012	
						APPROVED	HLV PME		
						DATE	28 Dec 55	SCALE	1/1

UNLESS OTHERWISE SPECIFIED:
DECIMAL DIMENSIONS INCLUDING HOLE SIZES MAY VARY ±.005
FRACTIONAL DIMENSIONS INCLUDING HOLE SIZES MAY VARY ±1/64
MACHINED ANGLES MAY VARY ±.1°
SHEARED ANGLES MAY VARY ±.25°
BROKEN ANGLES MAY VARY ±.1°
ECCENTRICITY BETWEEN ANY DIAMETERS ON THE SAME CENTERLINE SHALL NOT EXCEED .010 TOTAL INDICATOR READING.
ALL DIMENSIONS ARE FINISH DIMENSIONS INCLUDING APPLIED FINISH AND ARE GIVEN IN INCHES.