

Col. 540-7854-002

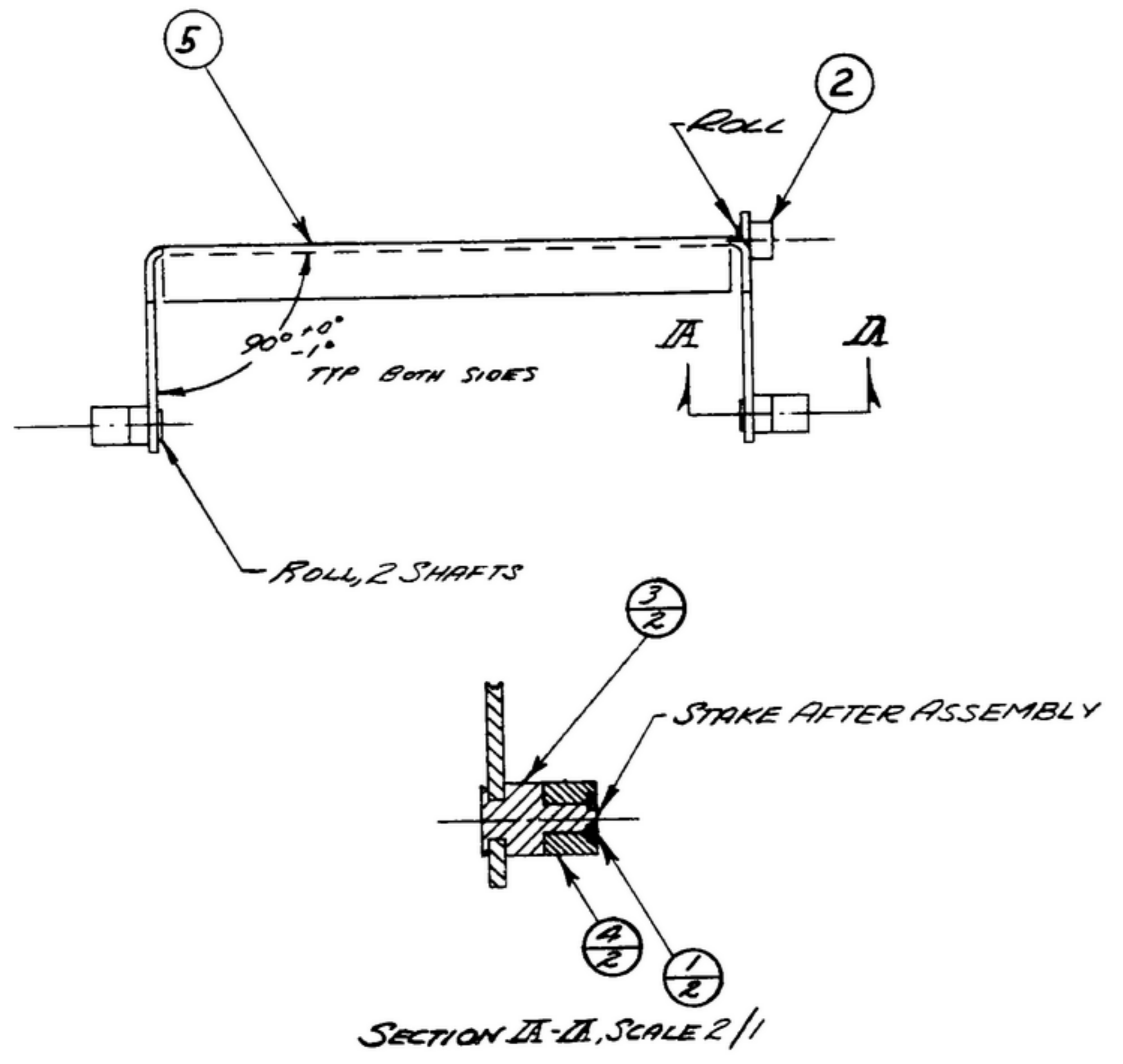
EQUIP. TYPE R390A/URR EXP. NO.

NOTICE: WHEN GOVERNMENT DRAWINGS, SPECIFICATIONS, OR OTHER DATA ARE USED FOR ANY PURPOSE OTHER THAN IN CONNECTION WITH A DEFINITELY RELATED GOVERNMENT PROCUREMENT OPERATION, THE UNITED STATES GOVERNMENT THEREBY MAKES NO REPRESENTATION OR WARRANTY WHATSOEVER AND THE FACT THAT THE GOVERNMENT HAS PROVIDED THESE DRAWINGS, SPECIFICATIONS, OR OTHER DATA IS NOT TO BE REGARDED AS IMPLICATION OR ENDORSEMENT AS TO ANY PATENT RIGHTS OR AS TO THE MERCHANTABILITY OR FITNESS FOR USE OF ANY PATENTED INVENTION THAT MAY IN ANY WAY BE RELATED THERETO.

THIS DRAWING HAS BEEN FORWARDED BY THE GOVERNMENT AND MAY BE REPRODUCED AND USED IN CONNECTION WITH ANY GOVERNMENT PROCUREMENT OR MAINTENANCE OPERATION.

* FOR INFORMATION ONLY. CONTRACTOR MAY AT HIS OPTION DEVIATE FROM THESE PROCESS DETAILS.

REVISIONS			
SYM	DESCRIPTION	DATE	APPROVAL



- NOTES:
1. ROLLER (4) MUST ROTATE FREELY AFTER STAKING.
 2. ROLLER BORE TO BE LUBRICATED WITH OIL (6) PER SPEC MIL-L-7870, BEFORE ASSY.
 3. IN ALL SPLIT BALLOONS TOP FIGURE IS MATERIAL ITEM INDICATOR AND BOTTOM FIGURE IS QUANTITY.

COLLINS-PART NO.	ITEM	QTY	PART NO.	DESCRIPTION	MATL	MATL SPEC
558 0116 002	6	AS REQD		OIL		2
558 0425 003	5	1	SM-C-249074	RACK-LOW		
558 0180 002	4	2	SM-B-178739	ROLLER		
558 0178 002	3	2	SM-B-178738	SHAFT		
558 0176 002	2	1	SM-B-178723	PIN		
558 0086 002	1	2	SM-B-170822	WASHER		

LIST OF MATERIAL - COLLINS-PART NO. 558 0410 003

DRAWN ECS			CHECKED Rhm	APPROVED	COLLINS-RADIO-88 14214-PH-51-93	DEPARTMENT OF THE ARMY SIGNAL CORPS ENGINEERING LABORATORIES FORT MONMOUTH NEW JERSEY SM-C-249059
UNLESS OTHERWISE SPECIFIED: DECIMAL DIMENSIONS INCLUDING HOLE SIZES MAY VARY ±.008 FRACTIONAL DIMENSIONS INCLUDING HOLE SIZES MAY VARY ±1/64 MACHINED ANGLES MAY VARY ±.1° SHEARED ANGLES MAY VARY ±.25° BROKEN ANGLES MAY VARY ±.1° ECCENTRICITY BETWEEN ANY DIAMETERS ON THE SAME CENTERLINE SHALL NOT EXCEED .010 TOTAL INDICATOR READING. ALL DIMENSIONS ARE FINISH DIMENSIONS INCLUDING APPLIED FINISH AND ARE GIVEN IN INCHES.					SIGNAL CORPS	
558 0457 004 1 SM-D-21685A SC-DL-248775					REVIEWED PME	
COLLINS NO. 679 NEXT ASSY USED ON					APPROVED HLY PME	
APPLICATION					DATE 20 DEC 55 SCALE 1/1	

WHEN REFERRING TO THIS DRAWING STATE DRAWING NO., APPLICABLE ISSUE SYMBOL, IF ANY, AND DATE