

EQUIP. TYPE *R990A/JRR* EXP. NO.

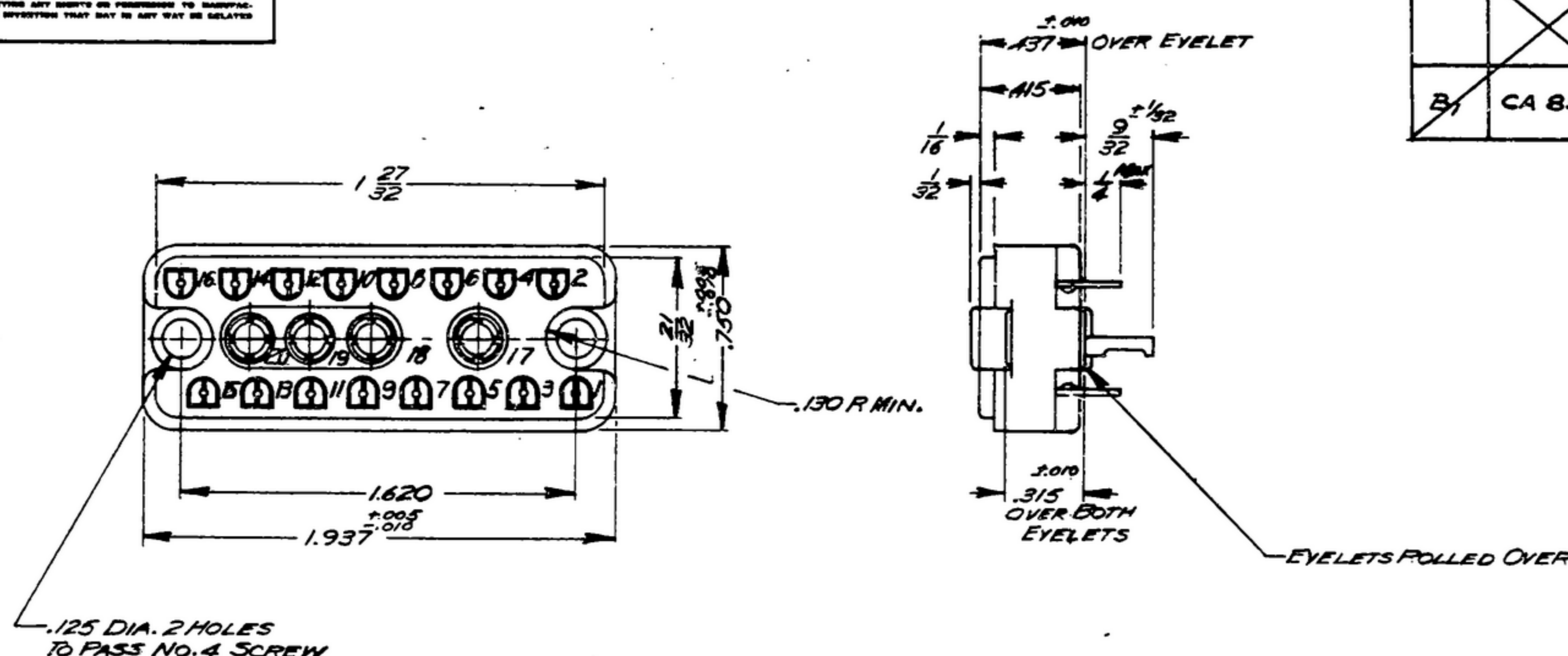
*COL. 321071-50*

NOTICE: WHEN GOVERNMENT DRAWINGS, SPECIFICATIONS, OR OTHER DATA ARE USED FOR ANY PURPOSE OTHER THAN IN CONNECTION WITH A SPECIFICALLY RELATED GOVERNMENT PROCUREMENT OPERATION, THE UNITED STATES GOVERNMENT THEREBY INCURS NO RESPONSIBILITY FOR ANY INADEQUACIES, DAMAGES, OR LOSS OF PROFITS OR OTHER CONSEQUENCES, AND THE FACT THAT THE GOVERNMENT MAY HAVE PROVIDED, FORWARDED, OR IN ANY WAY INDICATED THE SAID DRAWINGS, SPECIFICATIONS, OR OTHER DATA IS NOT TO BE CONSTRUED BY IMPLICATION OR OTHERWISE AS IN ANY MANNER LIMITING THE LIABILITY OR ANY OTHER PERSON OR CORPORATION, OR ASSUMING ANY LIABILITY OR LIABILITY IN CONNECTION WITH THE USE, REPAIR, OR MAINTENANCE OF ANY EQUIPMENT OR SYSTEM OR ANY PART THEREOF OR IN ANY MANNER.

THIS DRAWING HAS BEEN PURCHASED BY THE GOVERNMENT AND MAY BE REPRODUCED AND USED IN CONNECTION WITH ANY GOVERNMENT PROCUREMENT OR MAINTENANCE OPERATION.

\*FOR INFORMATION ONLY. CONTRACTOR MAY AT HIS OPTION DEVIATE FROM THESE PROCESS DETAILS.

X SWE APPROVAL		REVISIONS			
SYM	PRIO	SYM	DESCRIPTION	DATE	APPROVAL
	<i>6</i>	<i>A<sub>2</sub></i>	<i>A<sub>1</sub> ADDED NOTE 2 A<sub>2</sub> WAS MIL-P-14</i>	<i>15 OCT 59</i>	<i>42428-PC 59-AI-51 REV'D PME</i>
<i>B<sub>1</sub></i>	<i>CA 85035</i>	<i>B<sub>1</sub></i>	<i>(1) - TERMINAL PLATING WAS M351 OR M310 OVER M351 PER SPEC. MIL-F-14072.</i>	<i>23 JAN 61</i>	<i>42428 C-57 REV'D PME</i>



NOTES:

1. PART MAY BE #126-807-1002, AS SUPPLIED BY AMERICAN PHENOLIC CORP., CHICAGO, ILL. OR EQUAL, PROVIDING IT MEETS THE FOLLOWING REQUIREMENTS AND DIMENSIONS SHOWN.

DESCRIPTION: 20 CONTACT PANEL OR CABLE MOUNTING FEMALE CONNECTOR.

VOLTAGE RATING: 500 VOLTS RMS MAXIMUM AT SEA LEVEL.

CURRENT RATING: 4 LARGE CONTACTS (.093 DIA) - 15 AMPERES

16 SMALL CONTACTS (.040 DIA) - 5 AMPERES

*A<sub>2</sub>* INSULATION: PHENOLIC TYPE MFE OR BETTER IN ACCORDANCE WITH MILITARY SPECIFICATION MIL-17-14.

TERMINALS: BERYLLIUM COPPER

TERMINAL PLATING: M351 PER MIL-F-14072 WITH GOLD FLASH. *B<sub>1</sub>*

EYELETS: BRASS, FINISH: M352 PER SPEC MIL-F-14072.

MARKINGS: TERMINAL NUMBER SHALL BE MOLDED ON FRONT AND REAR OF CASTING AS SHOWN AND SHALL BE IN ACCORDANCE WITH SPEC MIL-H-13231.

MOUNTING DATA: LIQUID STAKING IS RECOMMENDED FOR MOUNTING SCREWS RATHER THAN LOCKWASHERS.

EYELET MAY BE OMITTED IF 0.437 AND 0.315 DIMENSIONS ARE MAINTAINED.

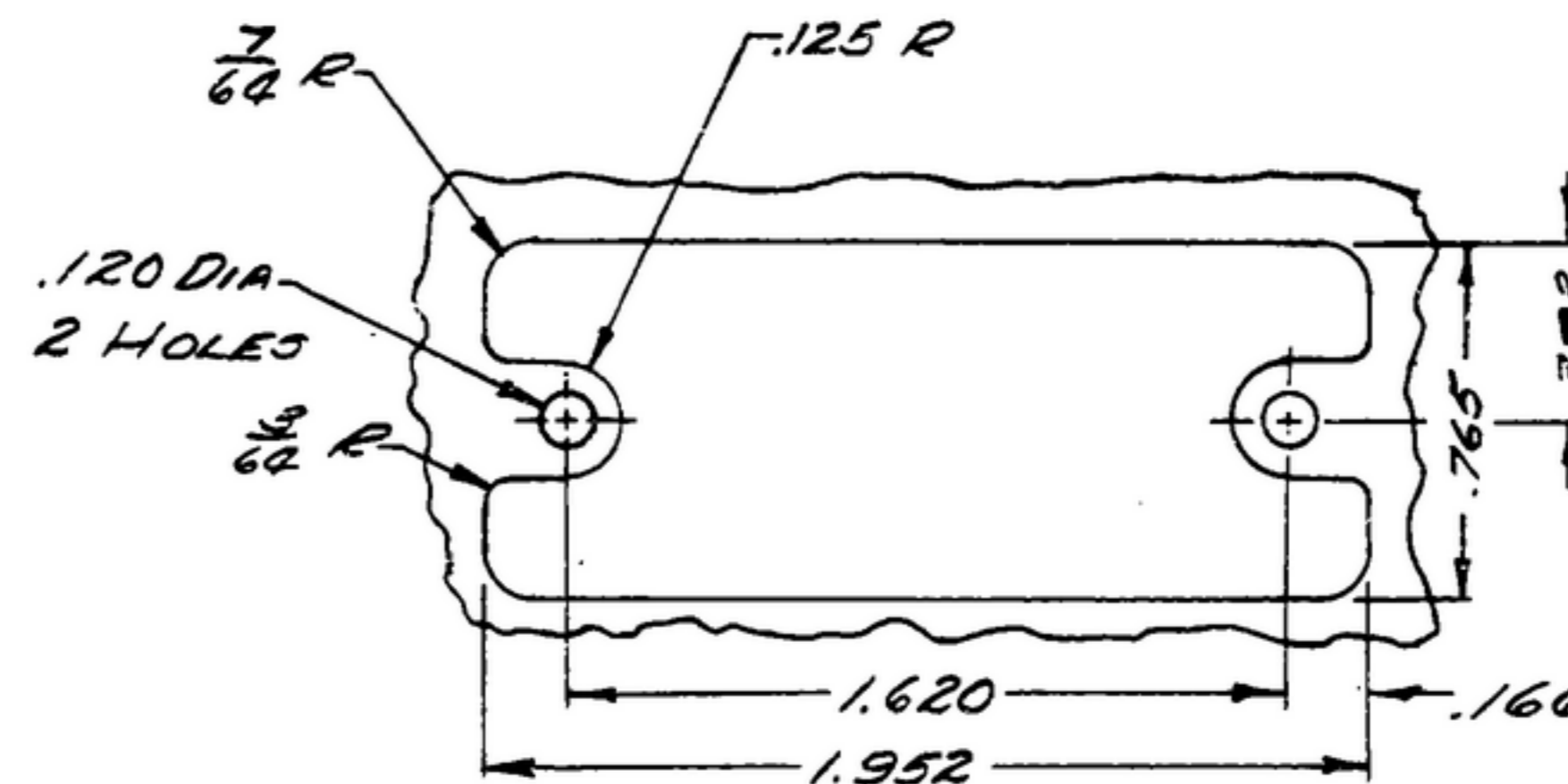
CONTACTS SHALL BE A 2 TINE STYLE (APPROVED BY CONTRACTORS ENGINEERING DEPARTMENT, ANY SUBSEQUENT MODIFICATION SHALL BE RESUBMITTED FOR APPROVAL PRIOR TO USAGE ON PRODUCTION ITEMS.)

APPROXIMATE HOLE IN CONTACTS: SMALL CONTACTS - .062 X .125

LARGE CONTACTS - .085 X .125

CONTACT TAILS: FINISH: M317 PER SPEC MIL-F-14072.

*A<sub>1</sub>* 2. CONNECTOR SHALL MEET THE APPLICABLE REQUIREMENTS OF MIL-C-8384 EXCEPT WHERE AMENDED BY THIS SPECIFICATION



SUGGESTED MOUNTING HOLE

\*WHEN PART NO APPEARS AS 559 0290 9-3 MILITARY SOURCE INSPECTION IS REQUIRED.

COLLINS PART NO.	REV.	RECD.	PART NO.	DESCRIPTION	DATE	DATE SPEC.
LIST OF MATERIAL						
COLLINS PART NO. <i>559 0290 003</i>						

DRAWN	CHECKED	APPROVED	COLLINS RADIO CO.	DEPARTMENT OF THE ARMY
<i>R.B.B.</i>	<i>EL</i>		<i>14214-PH-51-93</i>	SIGNAL CORPS ENGINEERING LABORATORIES
UNLESS OTHERWISE SPECIFIED: DECIMAL DIMENSIONS INCLUDING HOLE SIZES MAY VARY ±.008 FRACTIONAL DIMENSIONS INCLUDING HOLE SIZES MAY VARY ±1/64 MACHINED ANGLES MAY VARY ±1° SHEARED ANGLES MAY VARY ±.25° BROKEN ANGLES MAY VARY ±1° ECCENTRICITY BETWEEN ANY DIAMETERS ON THE SAME CENTERLINE SHALL NOT EXCEED .010 TOTAL INDICATOR READING. ALL DIMENSIONS ARE FINISH DIMENSIONS INCLUDING APPLIED FINISH AND ARE GIVEN IN INCHES.				CONNECTOR
				REVIEWED <i>PME</i>
APPLICATION				FORT MONMOUTH NEW JERSEY
558-0455-004 / SM-D-289103 SC-DL-248775				SM-C-283189
COLLINS NO.	QTY	NEXT ASSY	USED ON	
DATE <i>17 JAN '56</i> SCALE <i>2/1</i>				