

EQUIP. TYPE ~~R390A/URR~~ EXP. NO.

606-678-0754-00

NOTICE: WHEN GOVERNMENT DRAWINGS, SPECIFICATIONS, OR OTHER DATA ARE USED FOR ANY PURPOSE OTHER THAN IN CONNECTION WITH A DEFINITELY RELATED GOVERNMENT PROCUREMENT OPERATION, THE UNITED STATES GOVERNMENT THEREBY INCURS NO RESPONSIBILITY FOR ANY OMISSION, WHATSOEVER, AND THE FACT THAT THE GOVERNMENT HAS PARTICIPATED, FINANCED, OR IN ANY WAY SUPPLIED THE SAID DRAWINGS, SPECIFICATIONS, OR OTHER DATA IS NOT TO BE REGARDED AS IMPLICATION OF ENDORSEMENT OR ANY MANNER LICENSING THE HOLDER OR ANY OTHER PERSON OR CORPORATION, OR CONFERRING ANY RIGHTS OR PERMISSION TO REPRODUCE, USE, OR SELL ANY PATENTED INVENTION THAT MAY IN ANY WAY BE RELATED THEREBY.

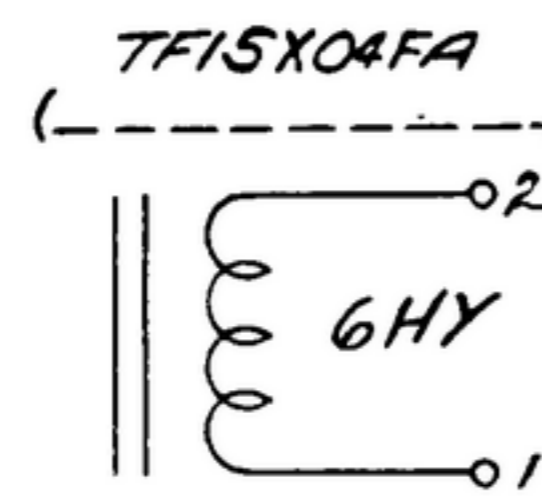
THIS DOCUMENT HAS BEEN PURCHASED BY THE GOVERNMENT AND MAY BE REPRODUCED AND USED IN CONNECTION WITH ANY GOVERNMENT PROCUREMENT OR MAINTENANCE OPERATION.

* FOR INFORMATION ONLY. CONTRACTOR MAY AT HIS OPTION DEViate FROM THESE PROCESS DETAILS.

* SWE APPROVAL
SYM PR 10072-13

REVISIONS

SYM	DESCRIPTION	DATE	APPROVAL
A ₉	A ₇ -TYPE 24N205208 WAS PART NO. 21610 AS SUPPLIED BY CHICAGO STD TRANSFORMER CORP. ETC. A ₈ -15/16 WAS 1, .173 WAS .171 A ₅ -WORKING VOLTAGE WAS HI POT TEST: 1500V WAS SOLDER LUG #18 AWG. A ₄ -TYPE TF1504FA WAS CLASS S, GRADE I. A ₅ -WORKING VOLTAGE: 535V WAS TEST VOLTAGE 1500 ETC. A ₂ -45° WAS 40° A ₇ -DELETED LIFE EXPECTANCY & SEAL TEST REQUIREMENTS. A ₈ -P213E WAS P213P A ₉ -ADDED SAMPLE APPROVAL NOTE.	20 NOV 59	42428-PC-59 -11-51



SPECIFY NAME OF MANUFACTURER. (SEE NOTE 2)

INDUCTANCE: 6.0 HENRIES MIN AT 10V RMS & 60 CPS
DC. CURRENT: 150 MA DC
DC. RESISTANCE: 137 OHMS MAX AT +25°C
WORKING VOLTAGE: 535 V
ALTITUDE: 10,000 FT.

(A₁)

NOTES:

- PART MAY BE SWE TYPE 24N205208 AS SUPPLIED BY STEWART WARNER ELECTRONICS, CHICAGO, ILL, PROVIDING IT MEETS THE FOLLOWING REQUIREMENTS AND DIMENSIONS SHOWN.
- AFFIX IN A THOROUGHLY LEGIBLE MANNER ALL CHARACTERS AND MARKINGS IN VERTICAL GOTHIC 3/32 IN. HIGH, IN ACCORDANCE WITH AND TO MEET THE TEST REQUIREMENTS OF SPEC MIL-M-13231.

DESCRIPTION: FILTER REACTOR IN ACCORDANCE WITH MILITARY SPECIFICATION MIL-T-27, TYPE TF15X04FA
INDUCTANCE: 6.0 HENRIES MINIMUM MEASURED AT 10 VOLTS RMS, 60 CPS, AND WITH RATED D.C. FLOWING THROUGH REACTOR.

RATED CURRENT: 150 MA DC.
D.C. RESISTANCE: 137 OHMS MAXIMUM AT 25°C.

WORKING VOLTAGE: 535 V

RIPPLE FREQUENCY: 100 TO 120 CPS.

AMBIENT TEMPERATURE RANGE: -55°C TO +85°C.

TEMPERATURE RISE: SHALL NOT EXCEED 45°C ABOVE AN OPERATING AMBIENT OF +85°C WHEN OPERATED AT RATED LOAD AND SPECIFIED DUTY CYCLE FOR A SUFFICIENT LENGTH OF TIME TO REACH NORMAL OPERATING TEMPERATURE.

DUTY CYCLE: CONTINUOUS.

ALTITUDE: SEA LEVEL TO 10,000 FEET OPERATING.

CASE: HERMETICALLY SEALED, MIL-TYPE FA CASE, STUD MOUNTED, WITH TERMINALS EXTENDING FROM MOUNTING SURFACE.

TERMINALS: TERMINALS SHALL BE LOCATED IN THE RELATIVE POSITIONS INDICATED. TERMINAL DESIGN IS OPTIONAL (PROVIDING TERMINAL LENGTH CONFORMS TO SPECIFIED LENGTH DIMENSIONS) BUT SHALL HAVE PRIOR SPEC MIL-T-27 PROTOTYPE APPROVAL AND SHALL BE APPROVED BY THE PRIME CONTRACTOR, BEFORE PROCEEDING WITH PRODUCTION QUANTITIES. THE TERMINAL DESIGN SHALL BE SUCH THAT THE TERMINALS ARE CAPABLE OF WITHSTANDING THE TERMINAL STRENGTH TESTS OF SPEC MIL-T-27 WHEN USING A TEST FORCE OF 5 POUNDS.

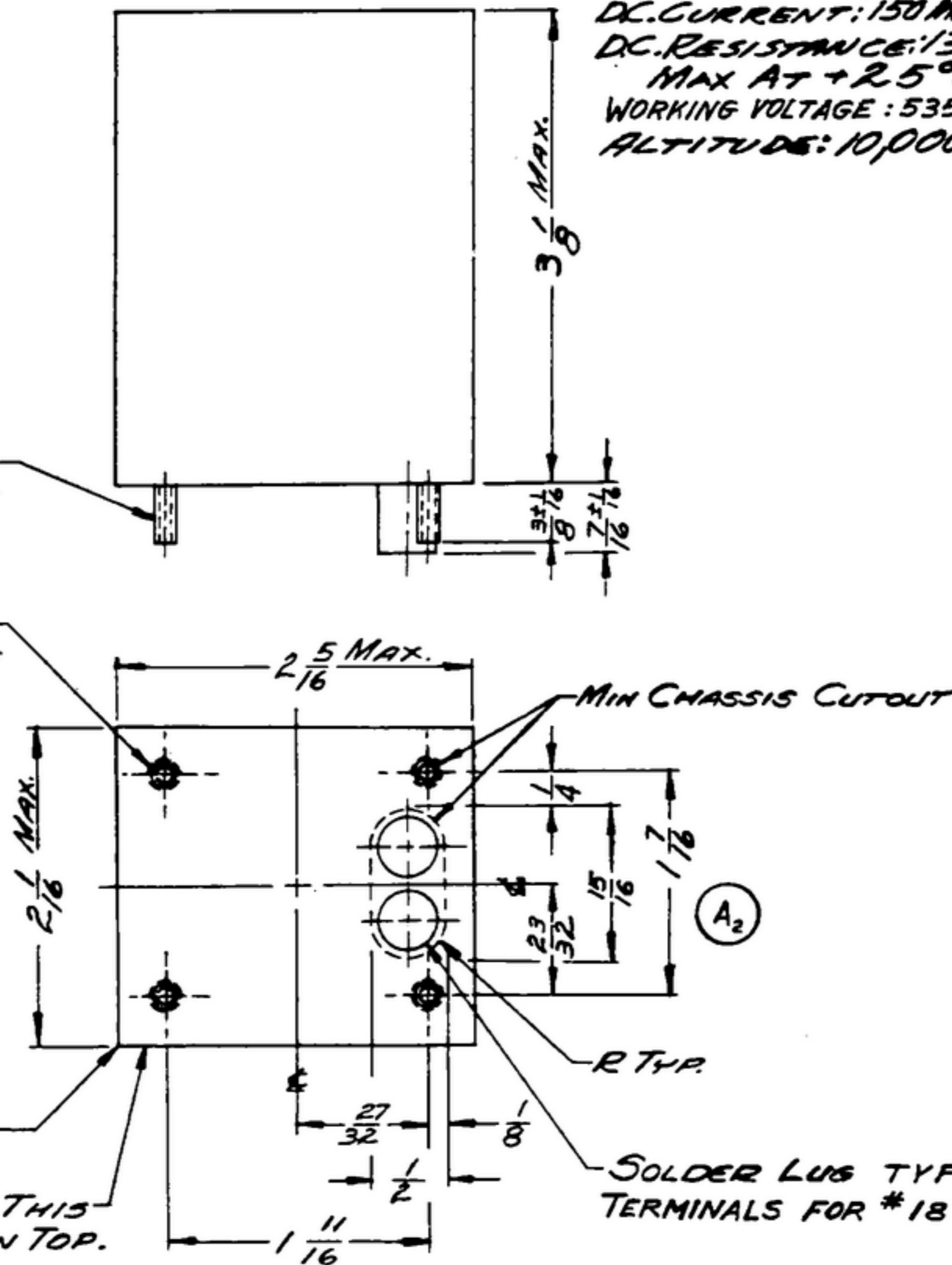
(A₇)

(A₈) FINISH: P213E PER SPEC MIL-F-14072.

(A₉) SAMPLE APPROVAL: SAMPLE APPROVAL MUST BE OBTAINED FROM PRIME CONTRACTOR BEFORE PROCEEDING WITH PRODUCTION. ALL THE ELECTRICAL AND MECHANICAL QUALIFICATIONS REQUIREMENTS SPECIFIED IN MIL-T-27 WILL BE CHECKED BEFORE GRANTING SAMPLE APPROVAL.

6-32NC-2A
4 MTS. STUDS

(A₂) .173 DIA
4 PLACES



* WHEN PART NO. APPEARS AS 652 036 9-2, MILITARY SOURCE INSPECTION IS REQ'D.

QUANTITY	PART NO.	DESCRIPTION	DATE	DATE CHG
LIST OF MATERIAL				
-SWE PART NO. 24N205208-				

DRAWN DC. WRIGHT	CHECKED EG	APPROVED	COLLINS-RADIO-60 CENTR-RAPID-100W 14214PH-51-93	DEPARTMENT OF THE ARMY SIGNAL CORPS ENGINEERING LABORATORIES FORT MONMOUTH NEW JERSEY 5M-C283219
UNLESS OTHERWISE SPECIFIED: DECIMAL DIMENSIONS INCLUDING HOLE SIZES MAY VARY ±.005 FRACTIONAL DIMENSIONS INCLUDING HOLE SIZES MAY VARY ±1/64 MACHINED ANGLES MAY VARY ±1° SHEARED ANGLES MAY VARY ±.25° BROKEN ANGLES MAY VARY ±1° ECCENTRICITY BETWEEN ANY DIAMETERS ON THE SAME CENTERLINE SHALL NOT EXCEED .010 TOTAL INDICATOR READING. ALL DIMENSIONS ARE FINISH DIMENSIONS INCLUDING APPLIED FINISH AND ARE GIVEN IN INCHES.			SIGNAL CORPS	
5580340-004-1 5M-D-248801 5G-DL-248775			REVIEWED FME	
COLLINS NO. 677 NEXT ASSY USED ON			APPROVED HLY PME	
APPLICATION			DATE 5 MAR 58 SCALE 1/1	