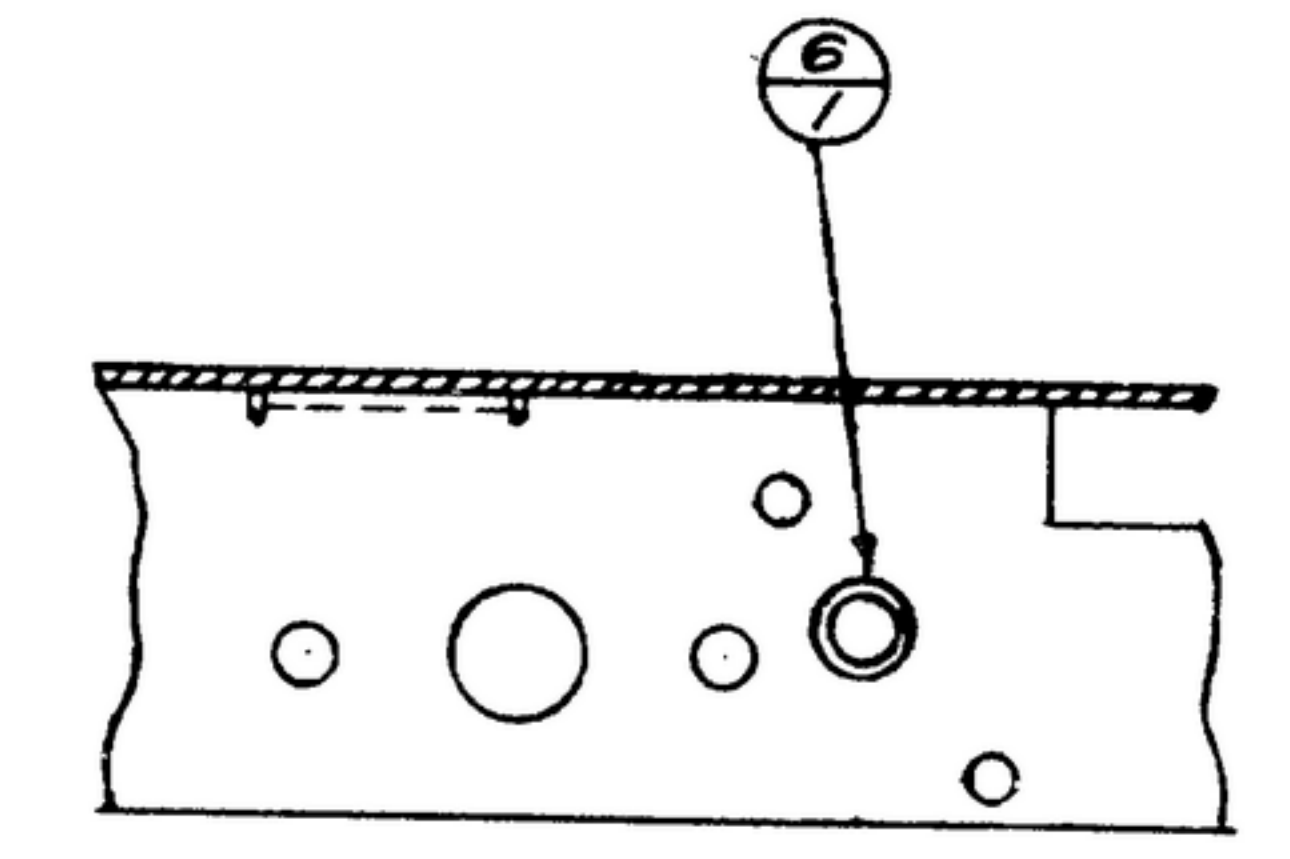
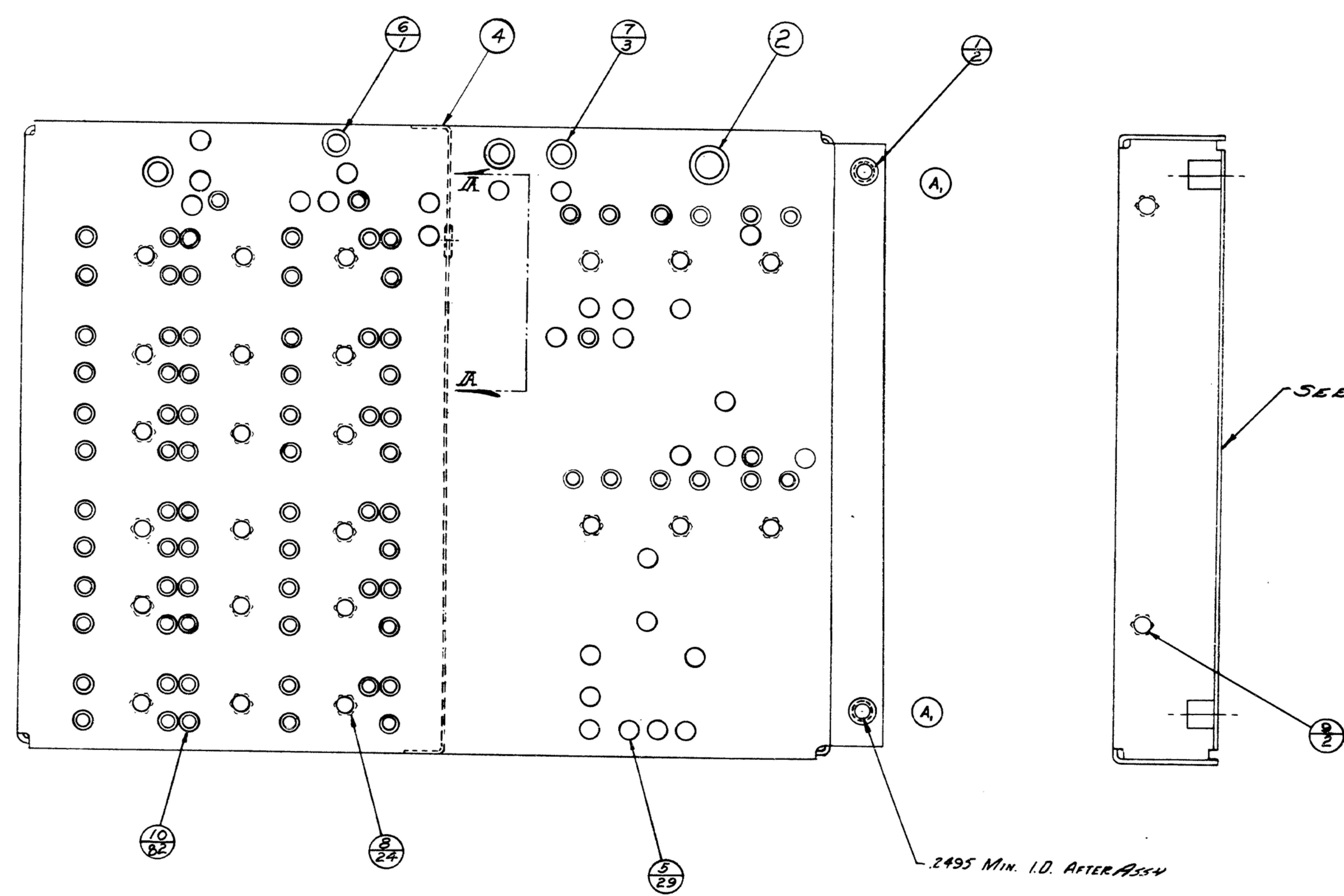


NOTE: THIS DRAWING IS A REVISION OF A PREVIOUS DRAWING. IT IS THE RESPONSIBILITY OF THE CONTRACTOR TO OBTAIN THE LATEST REVISION OF THIS DRAWING. THE UNITED STATES GOVERNMENT TAKES NO RESPONSIBILITY FOR ANY ERRORS OR OMISSIONS IN THIS DRAWING. THE CONTRACTOR SHALL BE RESPONSIBLE FOR THE CORRECTNESS OF THE DATA AND DIMENSIONS SHOWN HEREON. THE CONTRACTOR SHALL BE RESPONSIBLE FOR THE CORRECTNESS OF THE DATA AND DIMENSIONS SHOWN HEREON. THE CONTRACTOR SHALL BE RESPONSIBLE FOR THE CORRECTNESS OF THE DATA AND DIMENSIONS SHOWN HEREON.

THIS DRAWING HAS BEEN PREPARED BY THE CONTRACTOR AND IS TO BE USED AS A GUIDE IN THE CONSTRUCTION AND OPERATION OF THE EQUIPMENT. THE CONTRACTOR SHALL BE RESPONSIBLE FOR THE CORRECTNESS OF THE DATA AND DIMENSIONS SHOWN HEREON. THE CONTRACTOR SHALL BE RESPONSIBLE FOR THE CORRECTNESS OF THE DATA AND DIMENSIONS SHOWN HEREON. THE CONTRACTOR SHALL BE RESPONSIBLE FOR THE CORRECTNESS OF THE DATA AND DIMENSIONS SHOWN HEREON.

FOR INFORMATION ONLY. CONTRACTOR MAY AT HIS OPTION DEVIATE FROM THESE PROCESS DETAILS.

REVISIONS			
SYM	DESCRIPTION	DATE	APPROVAL
A	(1) CLARIFIED VIEW	27 OCT 59	2222 R-PC-89 HCF PHE



SECTION II, II - ROTATED 90° CLOCKWISE

- NOTES:
1. PRESS FASTENERS (8) AND (9) INTO CHASSIS (4) FROM INSIDE AS SHOWN.
  2. PRESS TERMINALS (5) AND CONNECTORS (10) INTO CHASSIS (4) FROM OUTSIDE AS SHOWN.
  3. INSTALL EYELETS (6), (2), (7) AS SHOWN FROM TOP EXCEPT (6) IN SECTION "A-A" FROM EITHER SIDE.
  4. IN ALL SPLIT BALLOONS, TOP FIGURE IS MATERIAL LIST ITEM INDICATOR & BOTTOM FIGURE IS QUANTITY.
  5. CHASSIS TO BE FLAT WITHIN 1/64 ON BOTTOM LIPS & BENT LIP.
  6. PRESS BUSHINGS (1) INTO CHASSIS IN POSITION SHOWN.

FORMING PART NO.	ITEM	REQD	PART NO.	DESCRIPTION	MATL	MATL SPEC
559 0285 002	10	82	SM-B-283194	CONNECTOR-RECEPTACLE		
559 0264 002	9	2		2 NUT-CAPTIVE INSERT		
559 0263 002	8	24	SM-B-283188.1	NUT-CAPTIVE INSERT		
559 0231 002	7	3	SM-B-283152	EYELET		
559 0227 002	6	2	SM-B-249273	EYELET		
559 0221 002	5	29	SM-B-249267	TERMINAL-INSULATED		
559 0434 004	4	1	SM-D-249102	CHASSIS - R.F.		
559 0400 002	2	1	SM-B-249089	EYELET		
559 0224 002	1	2	SM-B-248875	BUSHING-CAPTIVE		

FORMING PART NO.	ITEM	REQD	PART NO.	DESCRIPTION	MATL	MATL SPEC
559 0434 004	4	1	SM-D-249102	CHASSIS - R.F.		

DRAWN RDS	CHECKED [Signature]	APPROVED [Signature]	DESIGNED-BASIS-CD 1A21A-PH-51-93 SIGNAL CORPS REVIEWED PHE APPROVED HLY PHE DATE 28 DEC 1955 SCALE 1/1	LIST OF MATERIAL CHASSIS ASSY - R.F.	DEPARTMENT OF THE ARMY SIGNAL CORPS ENGINEERING LABORATORIES FORT MONMOUTH NEW JERSEY SM-D-249085
--------------	------------------------	-------------------------	---	---	---