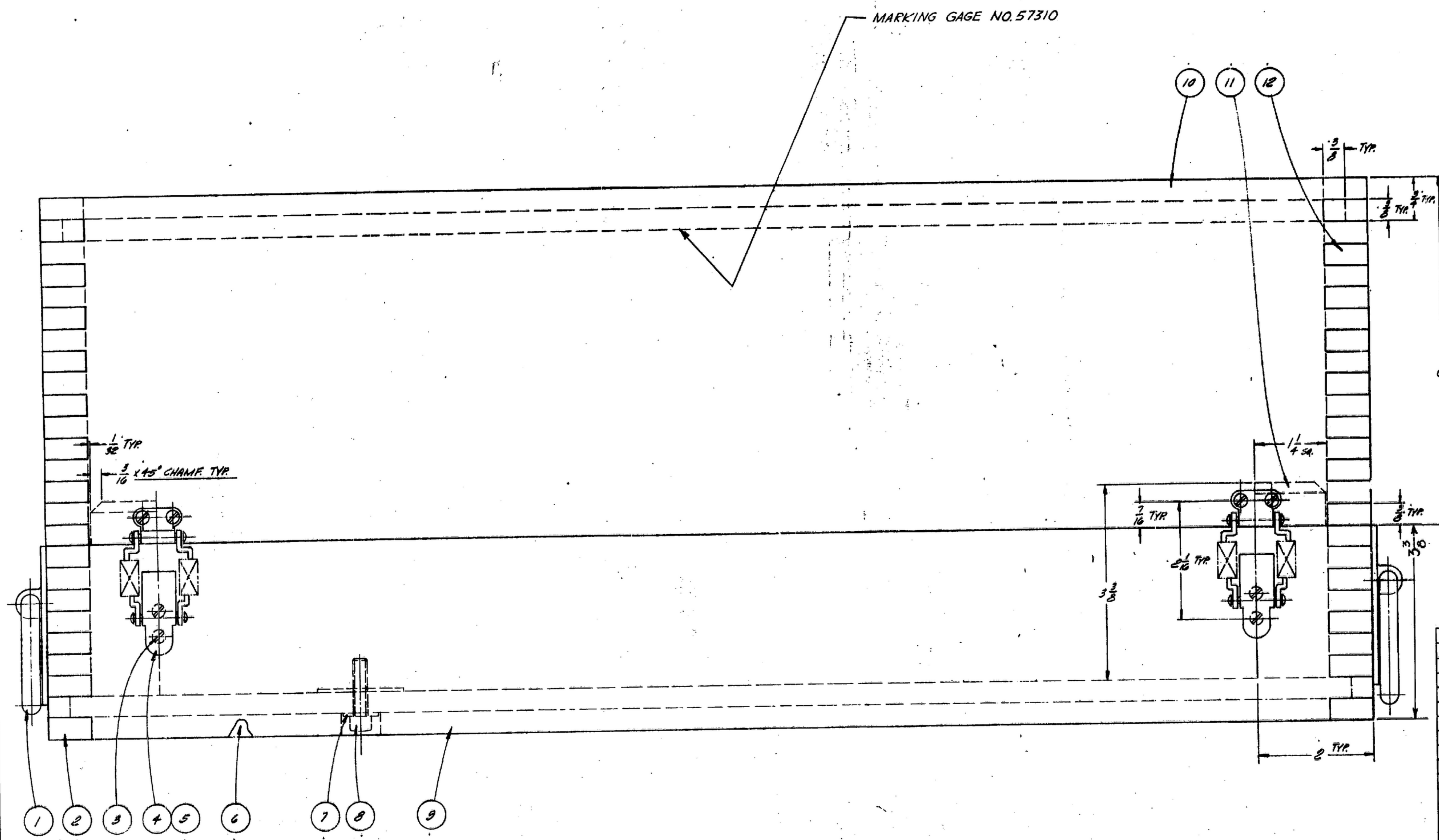


UNLESS OTHERWISE SPECIFIED, DIMENSIONS, SPECIFICATIONS, OR OTHER DATA ARE FOR THE PURPOSES OF THIS DRAWING ONLY AND ARE NOT TO BE CONSIDERED AS A WARRANTY OR GUARANTEE OF PERFORMANCE. THE UNITED STATES GOVERNMENT SHALL BE RESPONSIBLE FOR THE ACCURACY OF THE INFORMATION CONTAINED HEREIN AND FOR THE PROTECTION OF THE RIGHTS OF THE UNITED STATES GOVERNMENT. THIS DRAWING IS THE PROPERTY OF THE UNITED STATES GOVERNMENT AND IS LOANED TO YOU FOR YOUR INFORMATION ONLY. IT IS TO BE RETURNED TO THE OFFICE OF ORIGIN UPON COMPLETION OF YOUR WORK. IT IS NOT TO BE REPRODUCED OR TRANSMITTED IN ANY FORM OR BY ANY MEANS, ELECTRONIC OR MECHANICAL, INCLUDING PHOTOCOPYING, RECORDING, OR BY ANY INFORMATION STORAGE AND RETRIEVAL SYSTEM, WITHOUT PERMISSION IN WRITING FROM THE UNITED STATES GOVERNMENT. THIS DRAWING IS THE PROPERTY OF THE UNITED STATES GOVERNMENT AND IS LOANED TO YOU FOR YOUR INFORMATION ONLY. IT IS TO BE RETURNED TO THE OFFICE OF ORIGIN UPON COMPLETION OF YOUR WORK. IT IS NOT TO BE REPRODUCED OR TRANSMITTED IN ANY FORM OR BY ANY MEANS, ELECTRONIC OR MECHANICAL, INCLUDING PHOTOCOPYING, RECORDING, OR BY ANY INFORMATION STORAGE AND RETRIEVAL SYSTEM, WITHOUT PERMISSION IN WRITING FROM THE UNITED STATES GOVERNMENT.

THIS DOCUMENT AND THE PROGRAMS BY THE REFERENCED AND NOT BE REPRODUCED OR TRANSMITTED IN ANY FORM OR BY ANY MEANS, ELECTRONIC OR MECHANICAL, INCLUDING PHOTOCOPYING, RECORDING, OR BY ANY INFORMATION STORAGE AND RETRIEVAL SYSTEM, WITHOUT PERMISSION IN WRITING FROM THE UNITED STATES GOVERNMENT.

NOTE:
*FOR INFORMATION ONLY. CONTRACTOR MAY AT HIS OPTION DEVIATE FROM THESE PROCESS DETAILS

REVISIONS ORIGINAL ISSUE A 27-10-55			
SYN	DESCRIPTION	DATE	APPROVAL



- NOTES
- SUPPLIED BY MEMASTER-CARR SUPPLY CO.
640 W. LAKE ST. CHICAGO, ILL. OR EQUAL
 - SUPPLIED BY CORBIN CABINET LOCK DIV.
THE AMERICAN HARDWARE CO. INC.
NEW BRITAIN, CONN. OR EQUAL
 - COMMERCIAL DOUGLAS FIR PLYWOOD EXTERIOR TYPE,
GRADE SOUND B, SIDES EXTERIOR PER SPEC. MIL-P-66.
 - ALL JOINTS INCLUDING BOTTOM SHALL BE BONDED
WITH ADHESIVE PER SPEC. MIL-A-807 TYPE I, CLASS I,
AND APPLIED PER SPEC. MIL-A-848B.
 - BREAK ALL UNNECESSARY SHARP EDGES.

15	6	15	PAD 1/16 x 1/8 x 1/8	FELT	C-P-202	
14	1	14	TAG TO SUIT	AL ALLOY	BR-A-810	
13	4	13	#6 x 1/2 RD. HD. WOOD SCR.	BRASS		
12	2	12	SIDE 3/4 x 6 x 20	PLYWOOD		
11	4	11	SUPPORT 1 1/4 x 1/4 x 5 3/8	HARDWOOD	MM-L-736	
10	2	10	SIDE 3/4 x 6 x 23	PLYWOOD		
9	2	9	SIDE 1/2 x 3 1/2 x 23	PLYWOOD		
8	4	8		STEEL		
7	4	7		STEEL		
6	2	6		PLYWOOD		
5	8	5				2
4	8	4				2
3	32	3		BRASS		
2	2	2		PLYWOOD		
1	2	1	SM-D-57311-1			1

UNLESS OTHERWISE SPECIFIED DIMENSIONS ARE IN INCHES TOLERANCES ON FRACTIONS DECIMALS ANGLES ± 1/32		COLLEGE-BADIN-CO ORDER # 08719-PH-55-93 SIGNAL CORPS REVIEWED APPROVED M.H. DATE 27-10-55 SCALE FULL	DEPARTMENT OF THE ARMY SIGNAL CORPS ENGINEERING LABORATORIES FORT MONMOUTH NEW JERSEY SM-D-57311 SHEET 1 OF 2
NEXT ASSY USED ON APPLICATION	5C-6L-5759Z	CASE, GAGE	WHEN REFERRING TO THIS DRAWING STATE DRAWING NO., APPLICABLE ISSUE SY... ANY, A... DATE

SYM	DESCRIPTION	DATE	APPROVAL
-----	-------------	------	----------

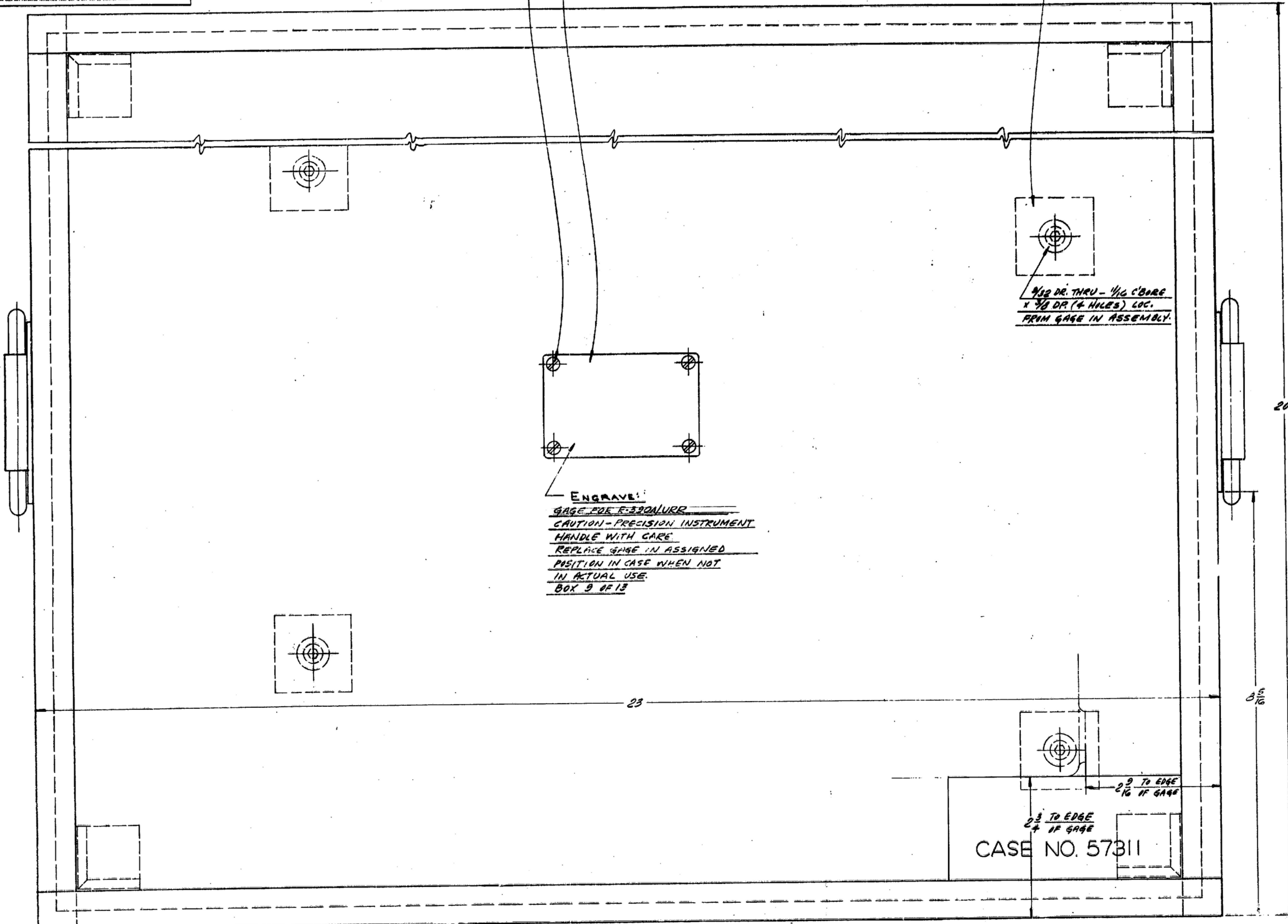
NOTES: THESE DIMENSIONS, UNLESS OTHERWISE SPECIFIED, ARE IN INCHES AND SHOULD BE USED FOR ALL DIMENSIONS UNLESS OTHERWISE SPECIFIED. DIMENSIONS ARE TO BE TAKEN FROM THE CENTER OF THE HOLE UNLESS OTHERWISE SPECIFIED. DIMENSIONS ARE TO BE TAKEN FROM THE CENTER OF THE HOLE UNLESS OTHERWISE SPECIFIED.

"THIS DRAWING HAS BEEN PREPARED BY THE GOVERNMENT AND IS NOT TO BE REPRODUCED OR TRANSMITTED IN ANY FORM OR BY ANY MEANS, ELECTRONIC OR MECHANICAL, INCLUDING PHOTOCOPYING, RECORDING, OR BY ANY INFORMATION STORAGE AND RETRIEVAL SYSTEM, WITHOUT PERMISSION IN WRITING FROM THE GOVERNMENT."

NOTE: *FOR INFORMATION ONLY. CONTRACTOR MAY AT HIS OPTION DEVIATE FROM THESE PROCESS DETAILS

13 14

15 LOC. (2) PADS TO SUIT



ENGRAVE!
GAGE FOR F-330ALURR
 CAUTION - PRECISION INSTRUMENT
 HANDLE WITH CARE
 REPLACE GAGE IN ASSIGNED
 POSITION IN CASE WHEN NOT
 IN ACTUAL USE
 BOX 9 OF 13

1/32 DR. THRU - 1/16 C BORE
 X 1/8 DR (4 HOLES) LOC.
 FROM GAGE IN ASSEMBLY.

2 3/16 TO EDGE
 2 9/16 IF GAGE
 CASE NO. 57311

20

8 5/16

23

2 9/16 TO EDGE
 IF GAGE

2 3/16 TO EDGE
 IF GAGE

PART NO.	DESCRIPTION	MATL.	MATL SPEC.
----------	-------------	-------	------------

UNLESS OTHERWISE SPECIFIED DIMENSIONS ARE IN INCHES TOLERANCES ON FRACTIONS DECIMALS ANGLES + .001 - .002		CALCINS RADIN CO ORDER # 08719-PH-55-93 SIGNAL CORPS REVIEWED PNE APPROVED M.H. PNE DATE 27-10-55 SCALE FULL	CASE GAGE DEPARTMENT OF THE ARMY SIGNAL CORPS ENGINEERING LABORATORIES FORT MONMOUTH NEW JERSEY SM-D-57311
SC-GL-57592	NEXT ASSY USED ON	APPLICATION	WHEN REFERRING TO THIS DRAWING STATE DRAWING NO., APPLICABLE ISSUE SYMBOL, IF ANY, AND DATE.