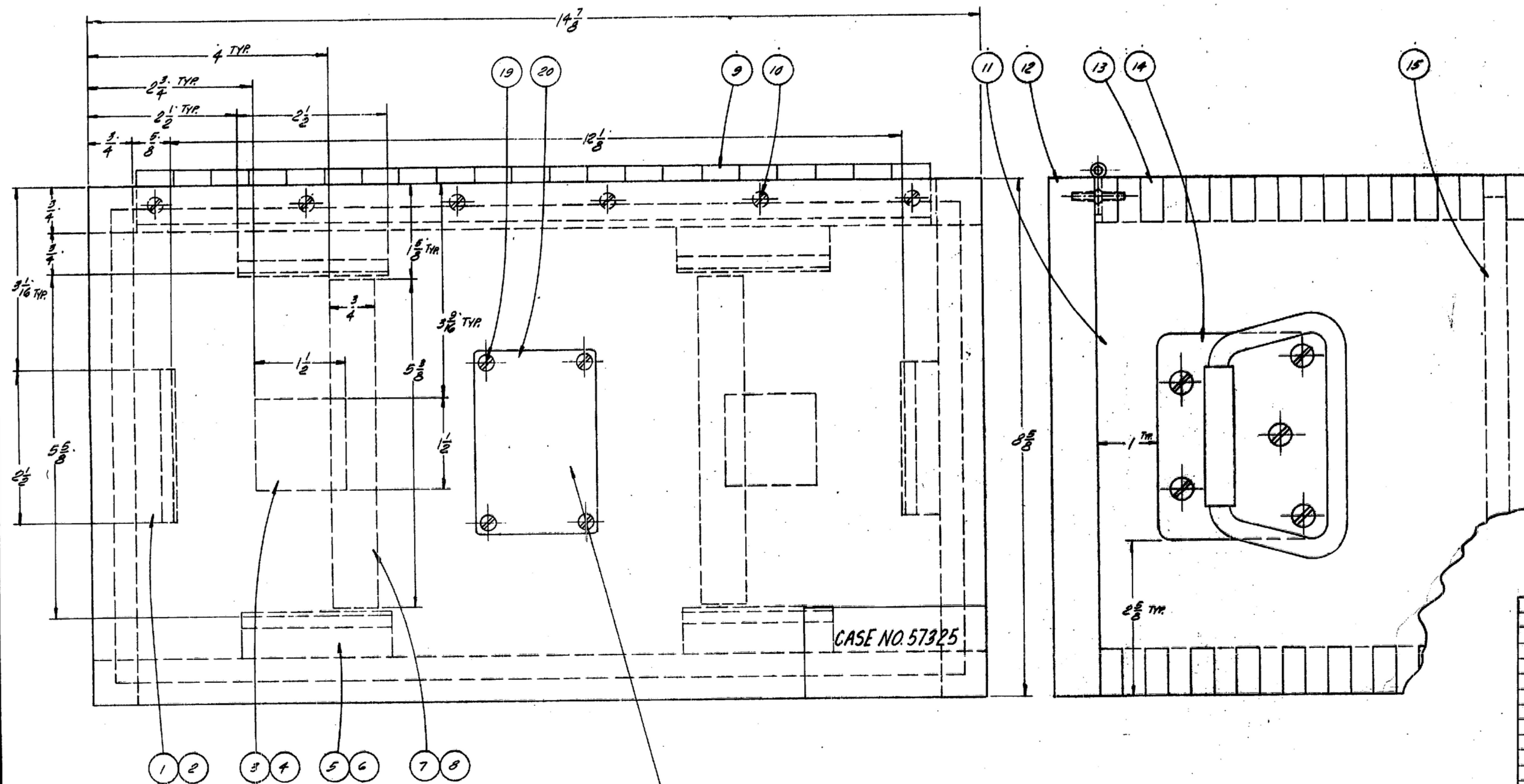


NOTE: *FOR INFORMATION ONLY. CONTRACTOR MAY AT HIS OPTION DEVIATE FROM THESE PROCESS DETAILS

ENGINEER'S NOTE: THIS DRAWING IS THE PROPERTY OF THE UNITED STATES GOVERNMENT AND IS LOANED TO YOU BY THE UNITED STATES GOVERNMENT. IT IS TO BE USED ONLY FOR THE PURPOSES SPECIFIED HEREIN AND IS NOT TO BE REPRODUCED OR TRANSMITTED IN ANY FORM OR BY ANY MEANS, ELECTRONIC OR MECHANICAL, INCLUDING PHOTOCOPYING, RECORDING, OR BY ANY INFORMATION STORAGE AND RETRIEVAL SYSTEM, WITHOUT PERMISSION IN WRITING FROM THE UNITED STATES GOVERNMENT.

*THIS DRAWING IS THE PROPERTY OF THE ENGINEER AND IS LOANED TO YOU BY THE ENGINEER. IT IS TO BE USED ONLY FOR THE PURPOSES SPECIFIED HEREIN AND IS NOT TO BE REPRODUCED OR TRANSMITTED IN ANY FORM OR BY ANY MEANS, ELECTRONIC OR MECHANICAL, INCLUDING PHOTOCOPYING, RECORDING, OR BY ANY INFORMATION STORAGE AND RETRIEVAL SYSTEM, WITHOUT PERMISSION IN WRITING FROM THE ENGINEER.



NOTES

- 1. SUPPLIED BY MEMMASTER-CARE SUPPLY CO. 640 N. LAKE ST. CHICAGO 6, ILL. OR EQUAL
- 2. SUPPLIED BY CURBIN CABINET LOCK DIV. THE AMERICAN HARDWARE CORP. NEW BRITAIN, CONN. OR EQUAL
- 3. COMMERCIAL DOUGLAS FIR PLYWOOD EXTERIOR TYPE, GRADE SOUND 2, SIDES EXTERIOR PER SPEC. MIL-P-66.
- 4. ALL JOINTS INCLUDING BOTTOM SHALL BE BONDED WITH ADHESIVE PER SPEC. MIL-A-397 TYPE 1, CLASS 1, AND APPLIED PER SPEC. MIL-A-5435
- 5. BREAK ALL UNNECESSARY SHARP EDGES
- 6. VARNISH FINISH

ENGRAVE:
 GAGE FOR R-330A/URR
 CAUTION-PRECISION INSTRUMENT
 HANDLE WITH CARE
 REPLACE GAGE IN ASSIGNED
 POSITION IN CASE WHEN NOT
 IN ACTUAL USE.
 OF 12 OF 13

ITEM	QTY	PART NO.	DESCRIPTION	NATL	NATL SPEC	NOTES
20	1		TAG TO SUIT	AL ALLOY	QR-A-318	
19	4	19	#6 x 1/2 RD. H.W. NND SCR	BRASS		
18	2			182A		2
17	2			172A		2
16	2		SCR	BRASS		
15	1		1/2	PLYWOOD		
14	2					1
13	2			PLYWOOD		
12	1			PLYWOOD		
11	2			PLYWOOD		
10	12			10 SCR	BRASS	
9	1					1
8	2	8	PAD 1/2 x 3/4 x 5/8	FELT	C-F-206	
7	2	7	RAIL 3/4 x 3/4 x 5/8	PLYWOOD		
6	4	6	PAD 1/2 x 1 x 2 1/2	FELT	C-F-206	
5	4	5	RAIL 3/4 x 1 1/8 x 2 1/2	PLYWOOD		
4	2	4	BLOCK 1 1/2 x 1 1/2 x 1 1/2	HARDWOOD	MM-L-736	
3	2	3	PAD 1/2 x 1 1/2 x 1 1/2	FELT	C-F-206	
2	2	2	RAIL 3/8 x 1 1/8 x 2 1/2	HARDWOOD	MM-L-716	
1	2		PAD 1/2 x 1 x 2 1/2	FELT	C-F-206	

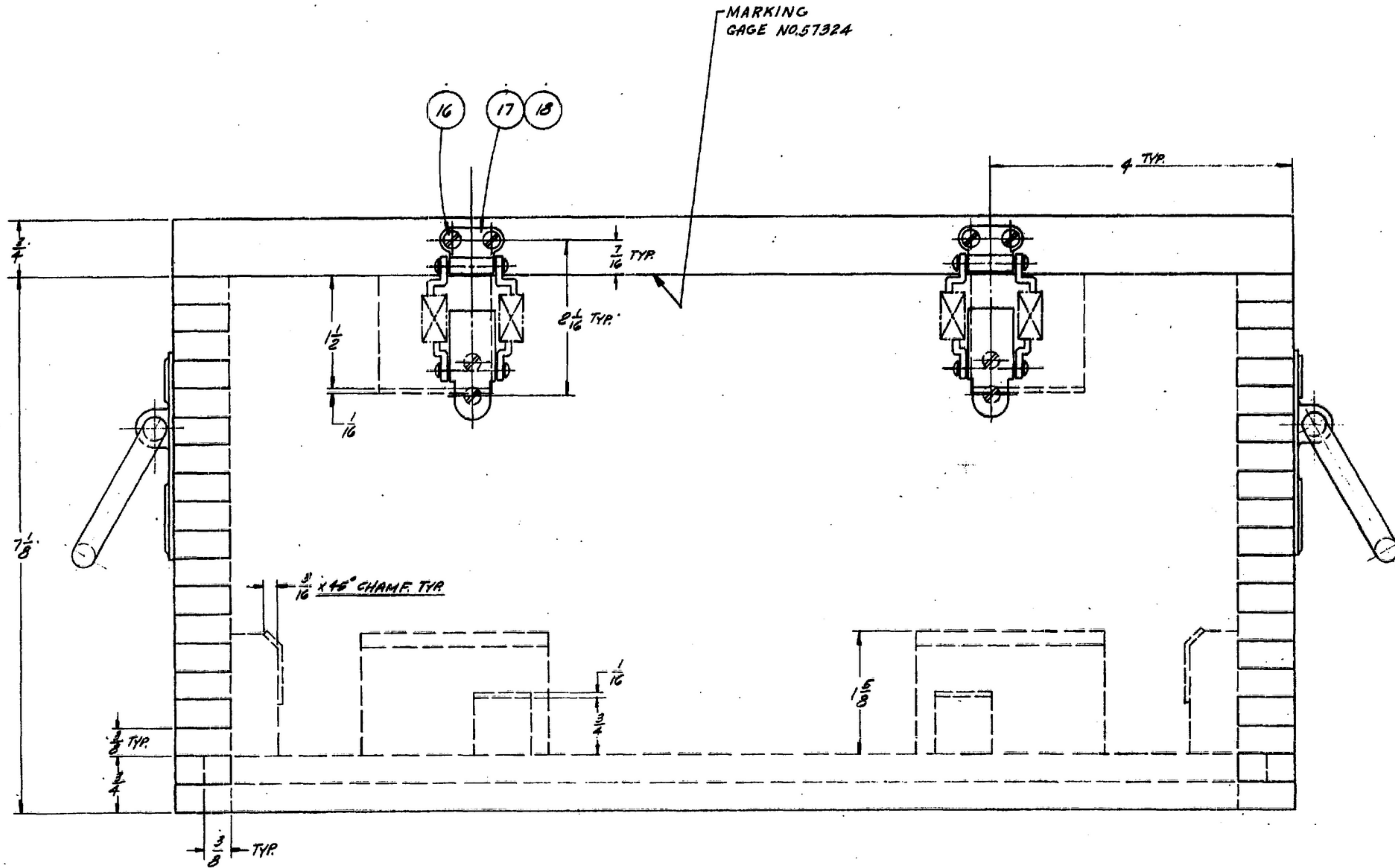
UNLESS OTHERWISE SPECIFIED DIMENSIONS ARE IN INCHES TOLERANCES ON FRACTIONS DECIMALS ANGLES + .02		CASE GAGE	DEPARTMENT OF THE ARMY SIGNAL CORPS ENGINEERING LABORATORIES FORT MONMOUTH NEW JERSEY SM-D-57325 SHEET 1 OF 2
ORDER # 08719-PH-55-93 SIGNAL CORPS REVIEWED PME APPROVED DATE 26-10-55	NEXT ASSY USED ON APPLICATION	ALL H. PME SCALE FULL	WHEN REFERRING TO THIS DRAWING STATE DRAWING NO., APPLICABLE ISSUE, ANY, AND DATE.

UNLESS OTHERWISE SPECIFIED, DIMENSIONS, SPECIFICATIONS, OR OTHER DATA ARE GIVEN FOR ALL PROPOSED STEEL
 SHALL BE CONSIDERED WITH A TOLERANCE OF PLUS OR MINUS ONE HUNDRED THIRTY-FOURTH (0.0075) INCHES. THE TOLERANCE SHALL
 APPLY TO ALL DIMENSIONS UNLESS OTHERWISE SPECIFIED. AND THE FACT THAT THE
 DIMENSIONS ARE GIVEN IN FRACTIONS DOES NOT IMPLY THAT THE DIMENSIONS ARE TO BE CUT TO
 THE NEAREST ONE THIRTY-FOURTH (0.0075) INCHES. THE DIMENSIONS ARE TO BE CUT TO THE
 NEAREST ONE THIRTY-FOURTH (0.0075) INCHES UNLESS OTHERWISE SPECIFIED. THE
 DIMENSIONS ARE TO BE CUT TO THE NEAREST ONE THIRTY-FOURTH (0.0075) INCHES UNLESS OTHERWISE SPECIFIED.
 ALL DIMENSIONS ARE TO BE CUT TO THE NEAREST ONE THIRTY-FOURTH (0.0075) INCHES UNLESS OTHERWISE SPECIFIED.

"THIS DRAWING HAS BEEN PREPARED BY THE ENGINEERING
 AND ART DEPARTMENT AND DOES NOT CONSTITUTE A
 CONTRACT DOCUMENT OR WARRANTY OF ANY KIND."

NOTE:
 * FOR INFORMATION ONLY, CONTRACTOR MAY AT HIS
 OPTION DEVIATE FROM THESE PROCESS DETAILS

REVISIONS ORIGINAL ISSUE A 26-10-54			
SYM	DESCRIPTION	DATE	APPROVAL



PART NO.	DESCRIPTION	MATL.	MATL. SPEC.
	LIST OF MATERIAL		
	CASE,		
	GAGE		

UNLESS OTHERWISE SPECIFIED DIMENSIONS ARE IN INCHES TOLERANCES ON FRACTIONS DECIMALS ANGLES	SC-GL-57325	REVIEWED PME	APPROVED M. H. PNE	DATE 26-10-54	SCALE FULL
ORDER # 08719-PH-55-93		SIGNAL CORPS			

DEPARTMENT OF THE ARMY
 SIGNAL CORPS ENGINEERING
 LABORATORIES
 FORT MONMOUTH NEW JERSEY
 SM-D-57325
 SHEET 2 OF 2