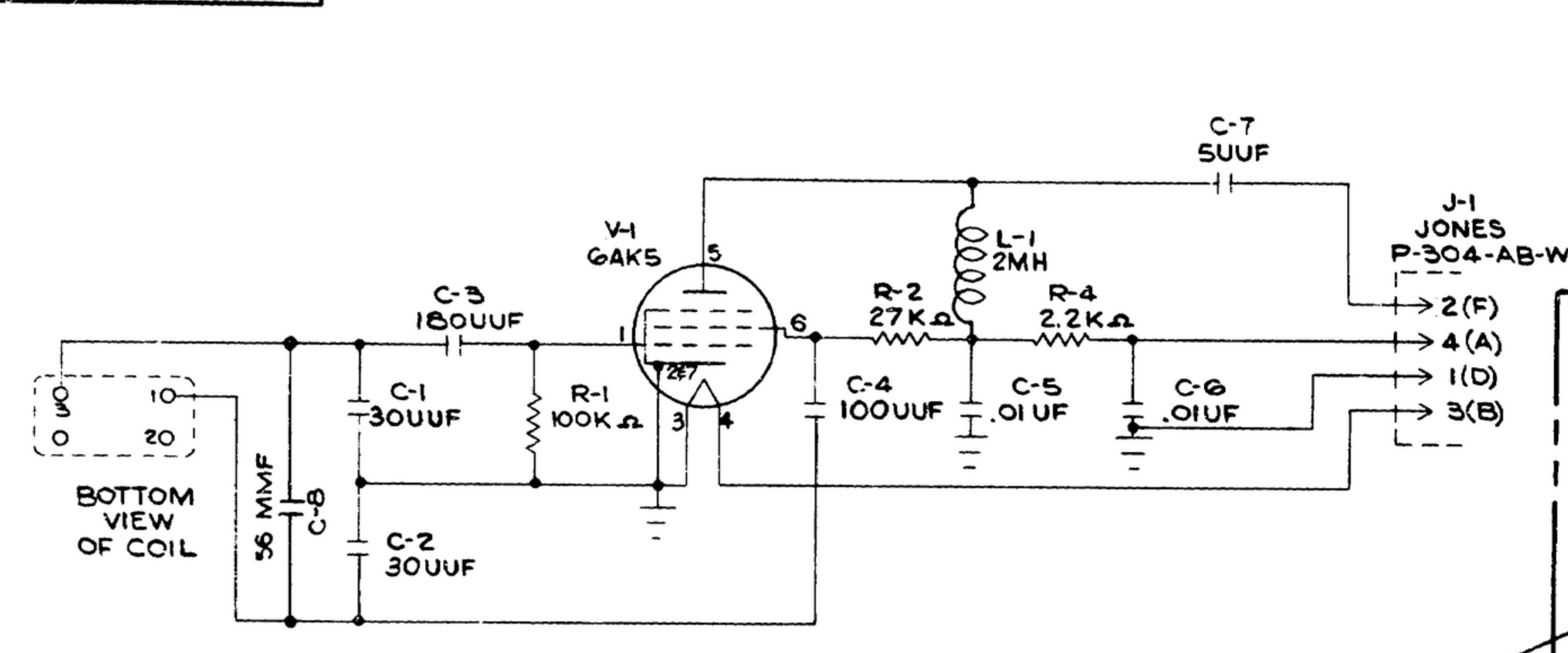
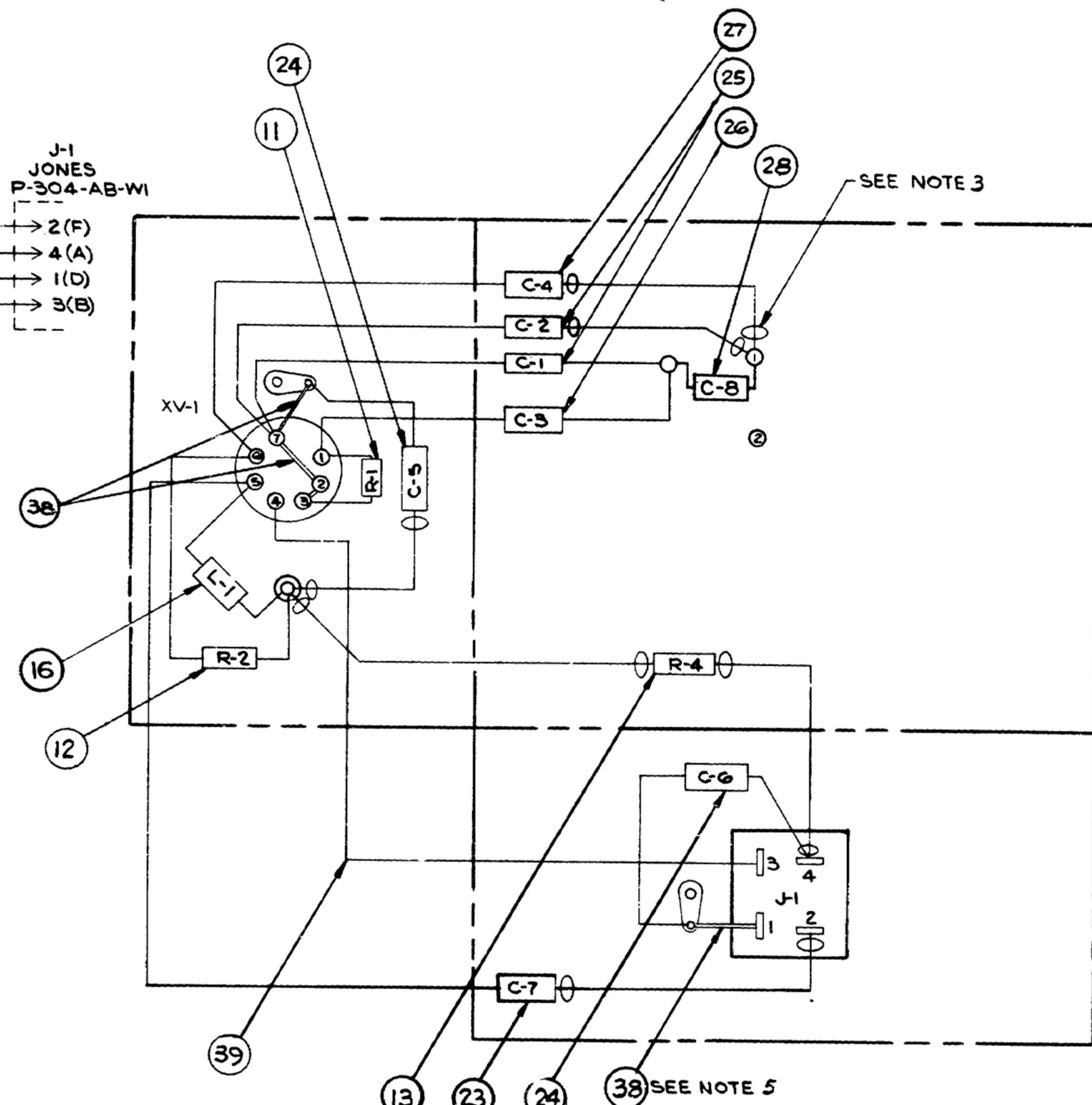


FOR INFORMATION ONLY, CONTRACTOR MAY AT HIS OPTION DEVIATE FROM THESE PROCESS DETAILS.

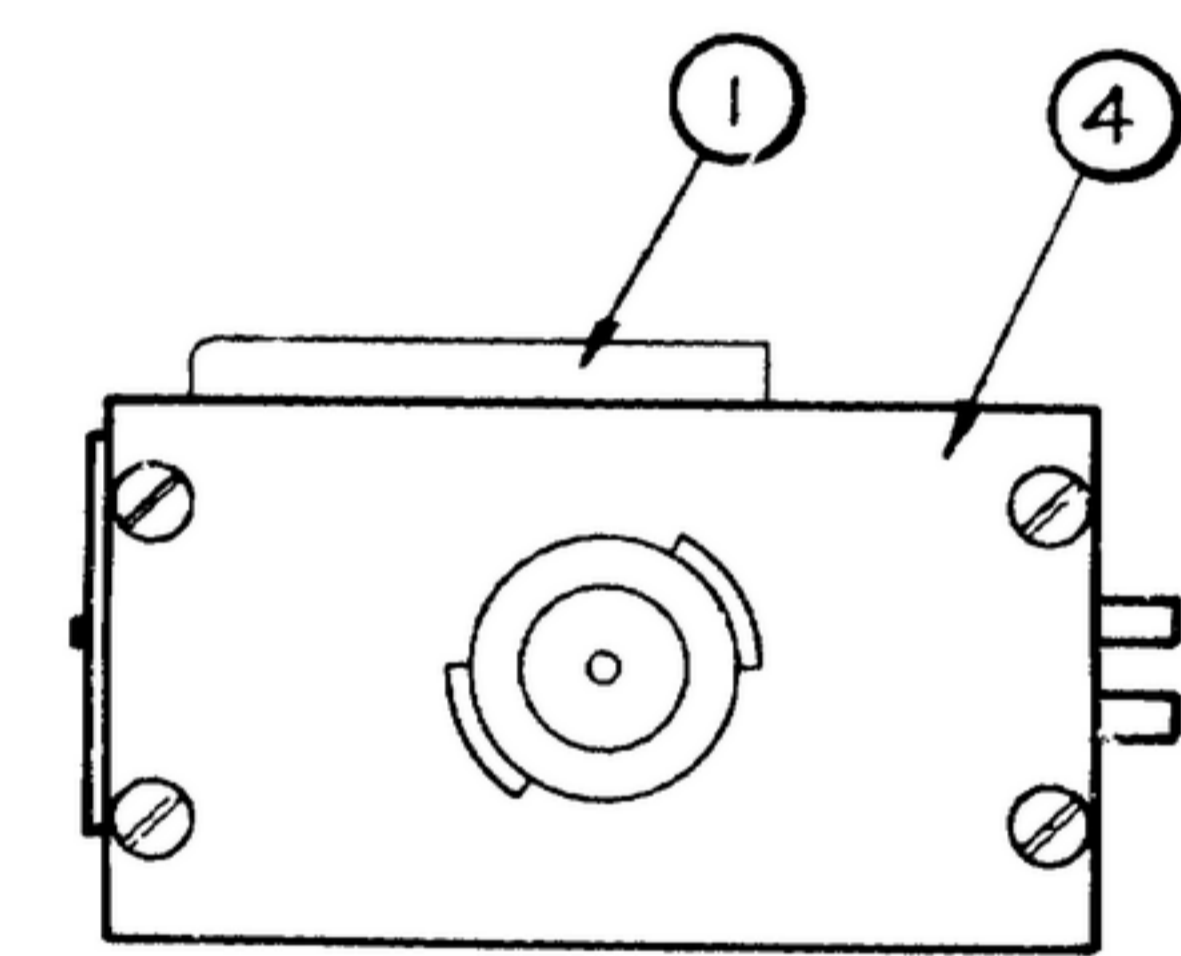


SCHEMATIC DIAGRAM

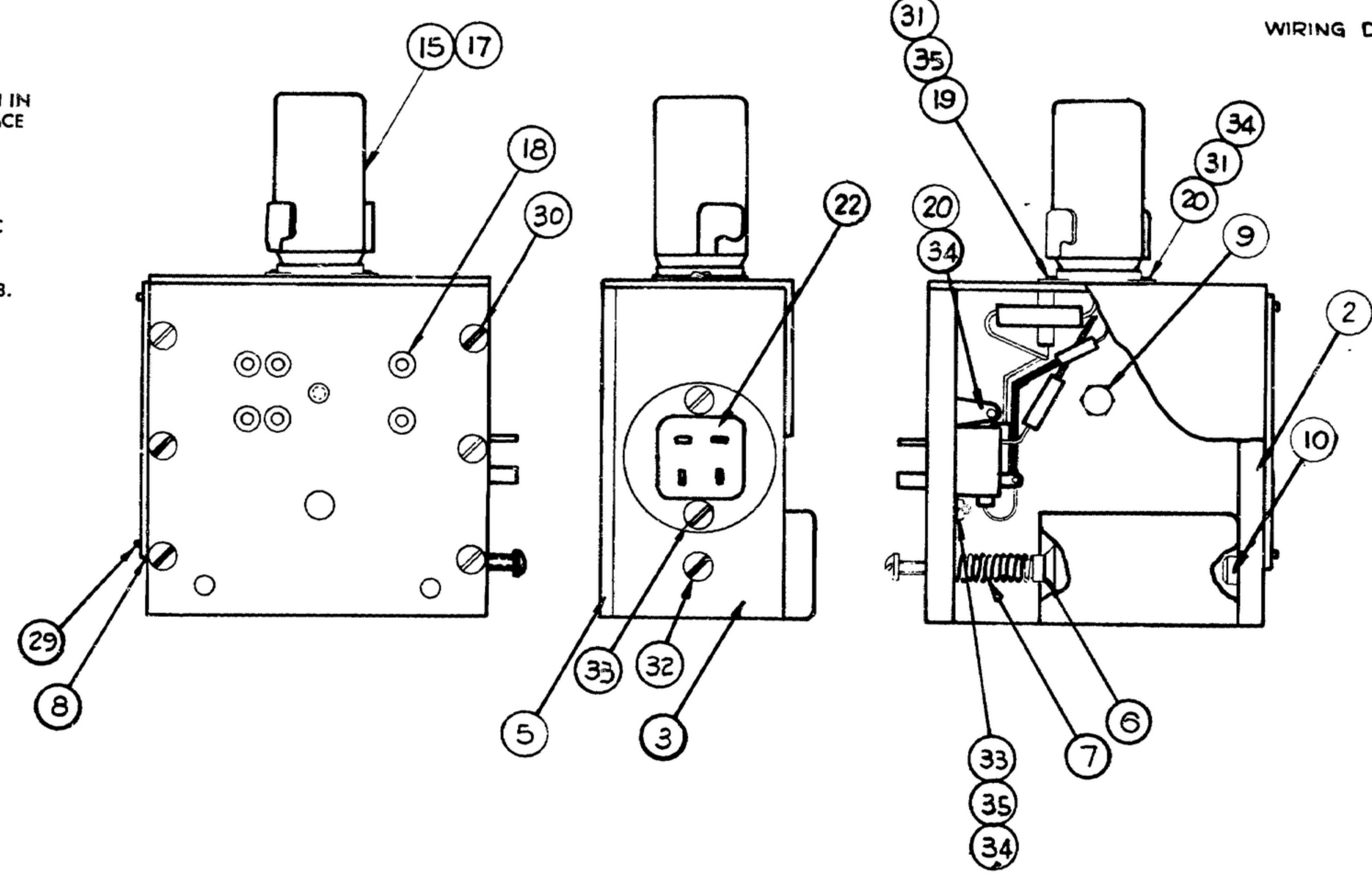


WIRING DIAGRAM

- NOTES:
- SUPPLIER FOR: (OR APPROVED EQUIVALENT)
 ITEM 14 & 15: CINCH MFG CO, CHICAGO, ILLINOIS
 ITEM 16: J.W. MILLER CO, LOS ANGELES, CALIF.
 ITEM 17: GENERAL ELECTRIC CORP, SCHENECTADY, N.Y.
 ITEM 18: SEALECTRO CORP, NEW ROCHELLE, N.Y.
 ITEM 19: WHITSO INC, SHILLER PARK, ILLINOIS
 ITEM 20: PATTON MAC-GUYER CO, PROVIDENCE, R.I.
 ITEM 21: BENTLY HARRIS MFG CO, CONSHOHOCKEN, PA.
 ITEM 22: HOWARD B. JONES, CHICAGO, ILLINOIS
 ITEM 24: SPRAGUE ELECTRIC CO, NORTH ADAMS, MASS.
 ITEMS 25, 26, 27, & 28: ARCO ELECTRONICS INC, CHICAGO, ILL.
 ITEM 29: PARKER-KALON CORP, CLIFTON, N.Y.
 ITEMS 31, 32 & 33: SAMUEL HARRIS & CO, CHICAGO, ILL.
 ITEM 34: CENTRAL SCREW CO, CHICAGO, ILLINOIS
 ITEM 35: SHAKEPROOF, DIV OF ILLINOIS TOOL WORKS, ELGIN, ILL.



- PART TO BE CLEAN & FREE OF BURRS & SHARP EDGES.
- SYMBOL \ominus \ominus INDICATES TUBING (ITEM 21).
- COIL ASSY (ITEM 1) IS SUPPLIED IN POSITION SHOWN. WHEN IN USE, COIL IS PLUGGED IN SOCKETS (ITEM 18) AND HELD IN PLACE WITH SCREW (ITEM 31).
- WIRE (ITEM 39) IS SHOWN BY A DOUBLE LINE.
- WIRE SHALL BE TYPE 5, DRAWN & ANNEALED, TINNED PER SPEC MIL-W-3861
- ELECTRICAL CONNECTIONS SHALL BE SOLDERED USING ITEM 38.
- COVERCOAT SOLDER CONNECTIONS USING ITEM 37.



ITEM	QTY	SIG PART NO.	DESCRIPTION	MATERIAL	MIL-FIN	FIN SIZE OR SPEC	SHT	NOTE
39	1	-39	WIRE MW-C2999F		MIL-W-76		1	
38	1	-38	WIRE #22				1	#86
37	1	-37	SOLDER .062 DIA Sn50WP3		CO-8-571		1	7
36	1	-36	VARNISH, TYPE 1		MIL-V-173		1	8
35	2	-35	LK WASH., (#4 INT TOOTH)				1	1
34	3	-34	NUT, (#4-40 HEX)				1	1
33	2	-33	(#4-40x LG SLOT. FH)				1	1
32	1	-32	(#6-32x LG SLOT. BIND. HD)				1	1
31	2	-31	MS, (#4-40x LG SLOT. BIND. HD)				1	1
30	10	-30	SCREW AN505-4-3				1	
29	2	-29	SCR (#2x3/16 LG RH TAPPING)	STL CAD PL			1	1
28	1	-28	#CM-15-E-560-J				1	1
27	1	-27	#CM-15-E-101-J				1	1
26	1	-26	#CM-15-E-181-J				1	1
25	2	-25	#CM-15-E-300-J	SILVER MICA			1	1
24	2	-24	#1039452	PAPER			1	1
23	1	-23	CAPACITOR 5 UUF	MICA	MIL-C-81		1	1
22	1	-22	CONN #P-304-AB-W1				1	1
21	1	-21	TUBING #18 BH-800				1	1
20	2	-20	LUG #3002				1	1
19	1	-19	POST #1032-1				1	1
18	6	-18	SOCKET #SKT-1	TEFLON			1	1
17	1	-17	TUBE #6AK5		MIL-E-1		1	1
16	1	-16	COIL 2.4 MH #4666				1	1
15	1	-15	SHIELD #8667		JAN-S-28		1	1
14	1	-14	SOCKET #13723		JAN-S-28		1	1
13	1	-13	RESISTOR 2.2KQ		MIL-R-11		1	1
12	1	-12	RESISTOR 27KQ		MIL-R-11		1	1
11	1	-11	RESISTOR 100KQ		MIL-R-11		1	1
10	1	-10	SCREW, (#8-32 NC-2)			.250x	2	2
9	1	-9	NUT, (#10-32 NC-2)			1/2 HEXx	2	2
8	1	-8	PLATE			.032x1 1/2x3	2	2&3
7	1	-7	SPRING			.020x.219x	2	
6	1	-6	NUT, (#6-32 NC-2)			9/32x5/32	2	2
5	1	-5	PLATE			1/8x3x3	2	2
4	1	-4	COVER			.052x1 5/8x3	2	2
3	1	-3	PLATE			1/2x1x3	2	2
2	1	-2	PLATE			1/2x1x3	2	2
1	1	-1	SM-D-58794-1	COIL ASSEMBLY			2	-5

UNLESS OTHERWISE SPECIFIED		MOTOROLA INC.	
DIMENSIONS ARE IN INCHES		ORDER NO. 14385-PC-58-A1	
TOLERANCES ON FRACTIONS DECIMALS ANGLES		SIGNAL CORPS	
± .01 ± .005		REVIEWED XXX	
DRAWN E.D.H.		APPROVED	
DATE 14 AUG 58		DATE 14 AUG 58	
NEXT ASSY USED ON	NEXT ASSY USED ON	CHECKED W.J.P. 14 JAN 59	SCALE
MOTOROLA APPL	APPLICATION	APPROVED CHAJAN 59	DATE 14 AUG 58

TEST OSCILLATOR, R-390A/UR

R.F. COIL Z213 17.5-25.0MC

SIG C INSPECTION

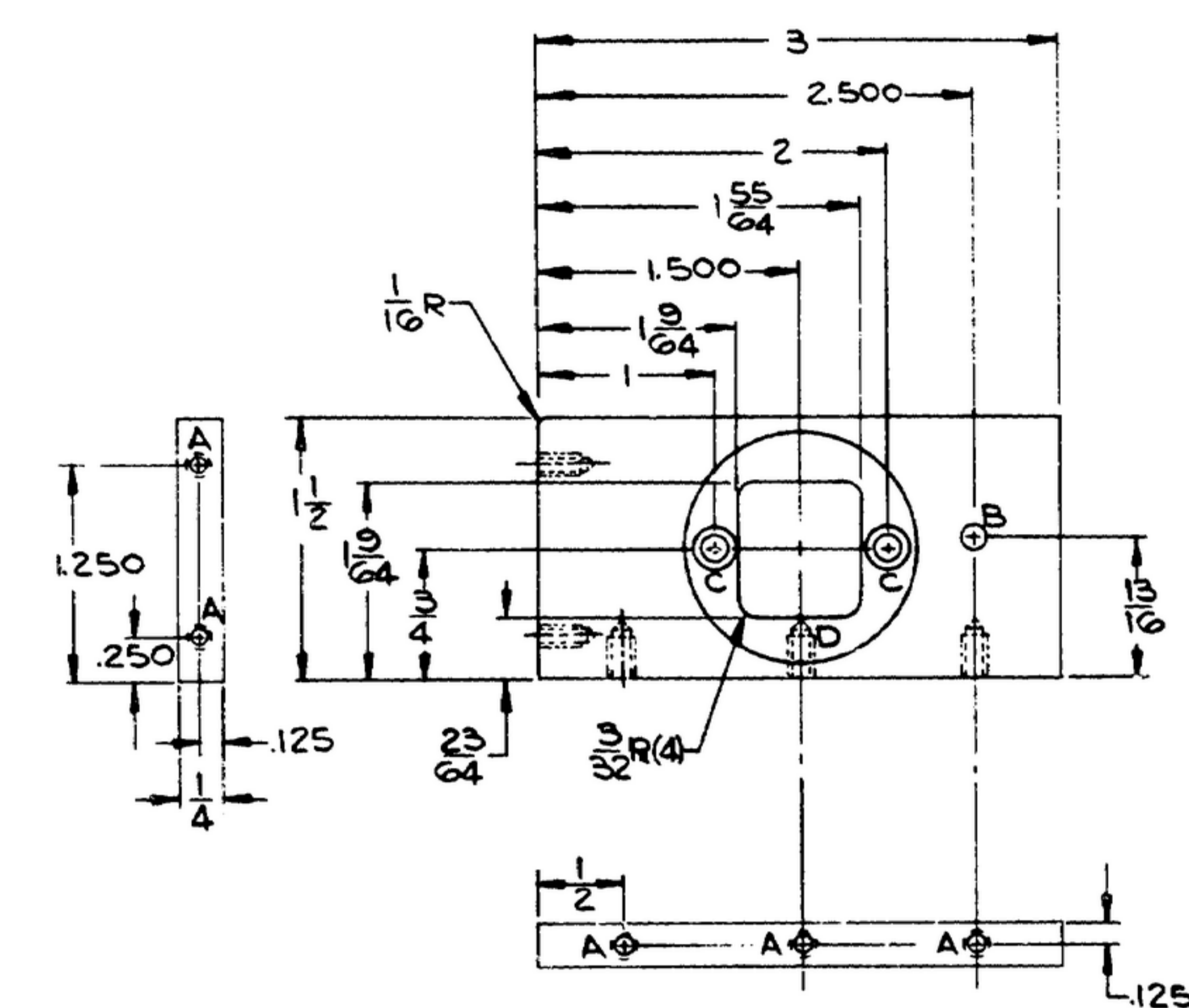
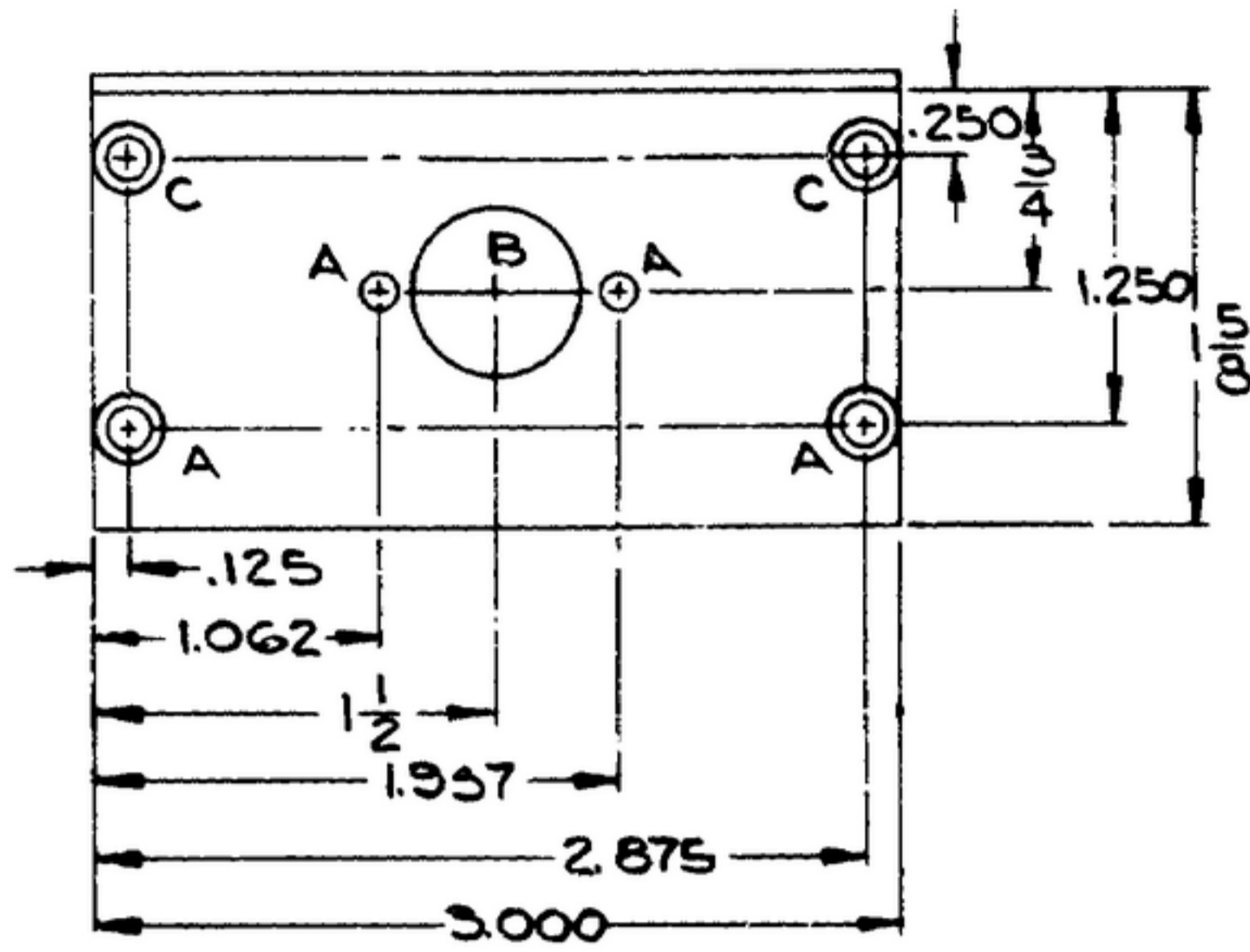
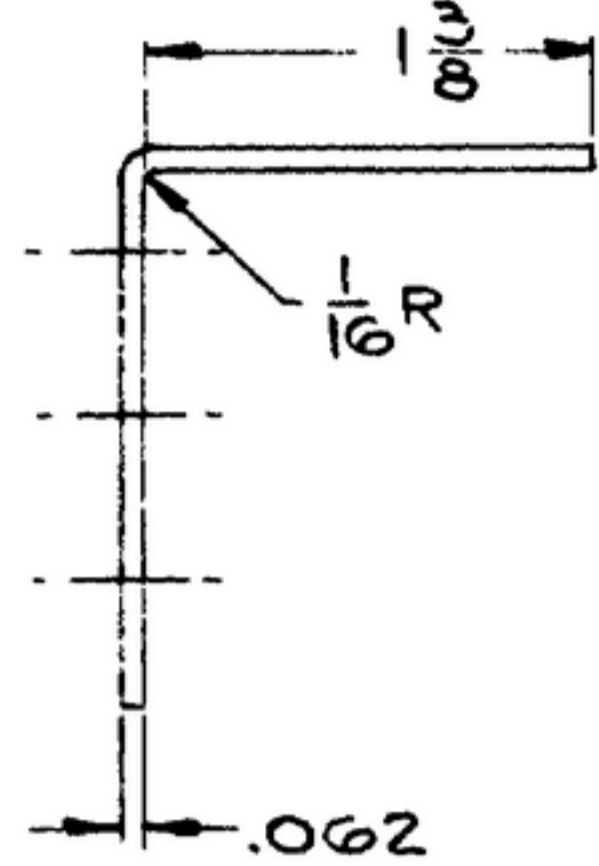
DEPARTMENT OF THE ARMY	SIGNAL CORPS ENGINEERING LABORATORIES
FORT MONMOUTH	NEW JERSEY
SM-D-58794	
SHEET 1 OF 2 SHEETS	

W&M REFERRING TO THIS DRAWING STATE DRAWING NO., APPLICABLE ISSUE SYMBOL, IF ANY, AND DATE.

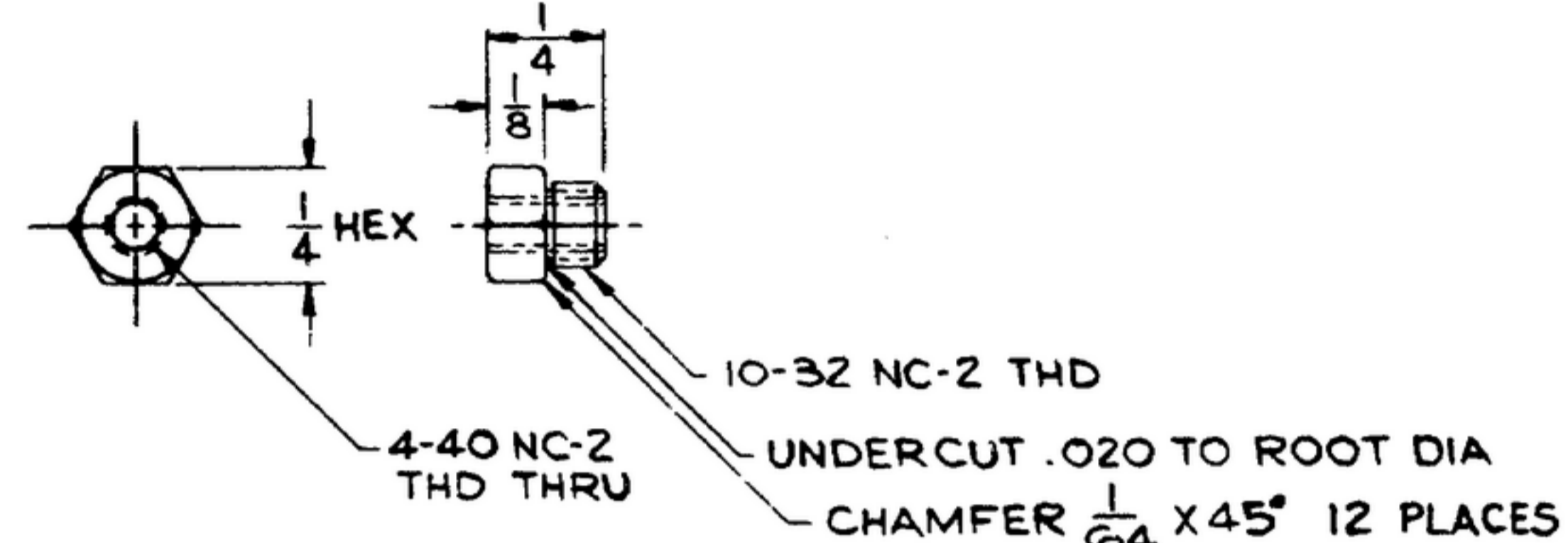
UNLESS OTHERWISE SPECIFIED, DIMENSIONS ARE TO BE INTERPRETED AS DIMENSIONS OF THE UNFINISHED SURFACE OF THE PART. DIMENSIONS IN PARENTHESES REFER TO DIMENSIONS OF THE FINISHED SURFACE. DIMENSIONS OF THE FINISHED SURFACE SHALL BE THE GOVERNING DIMENSIONS. DIMENSIONS OF THE FINISHED SURFACE SHALL BE THE GOVERNING DIMENSIONS.

*FOR INFORMATION ONLY, CONTRACTOR MAY AT HIS OPTION DEVIATE FROM THESE PROCESS DETAILS.

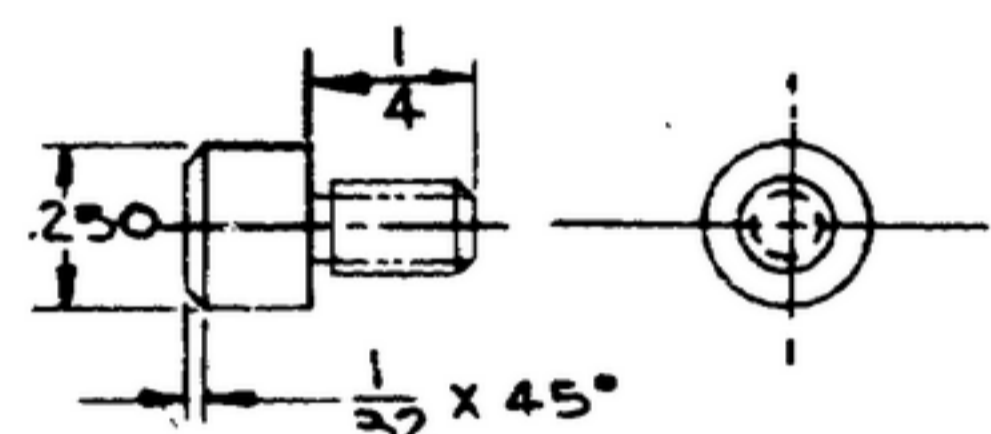
SYM	DESCRIPTION	QTY
A	.125 DIA THRU	2
B	.025 DIA THRU	1
C	.140 DIA THRU CSK 82° TO .230 DIA	4



SYM	DESCRIPTION	QTY
A	4-40 NC-2 THD 1/4 DEEP	5
B	.144 DIA THRU	1
C	.140 DIA THRU; CSK 82° TO .230 DIA	2
D	CBORE 1 1/32 DIA 3/16 DEEP	1



9 NUT, SPECIAL SCALE 2/1
 MATL: CRES COMP 3035, PHYS COND A, SURFACE COND C PER SPEC MIL-S-7720.
 FINISH: PASS. PER SPEC MIL-S-5002.



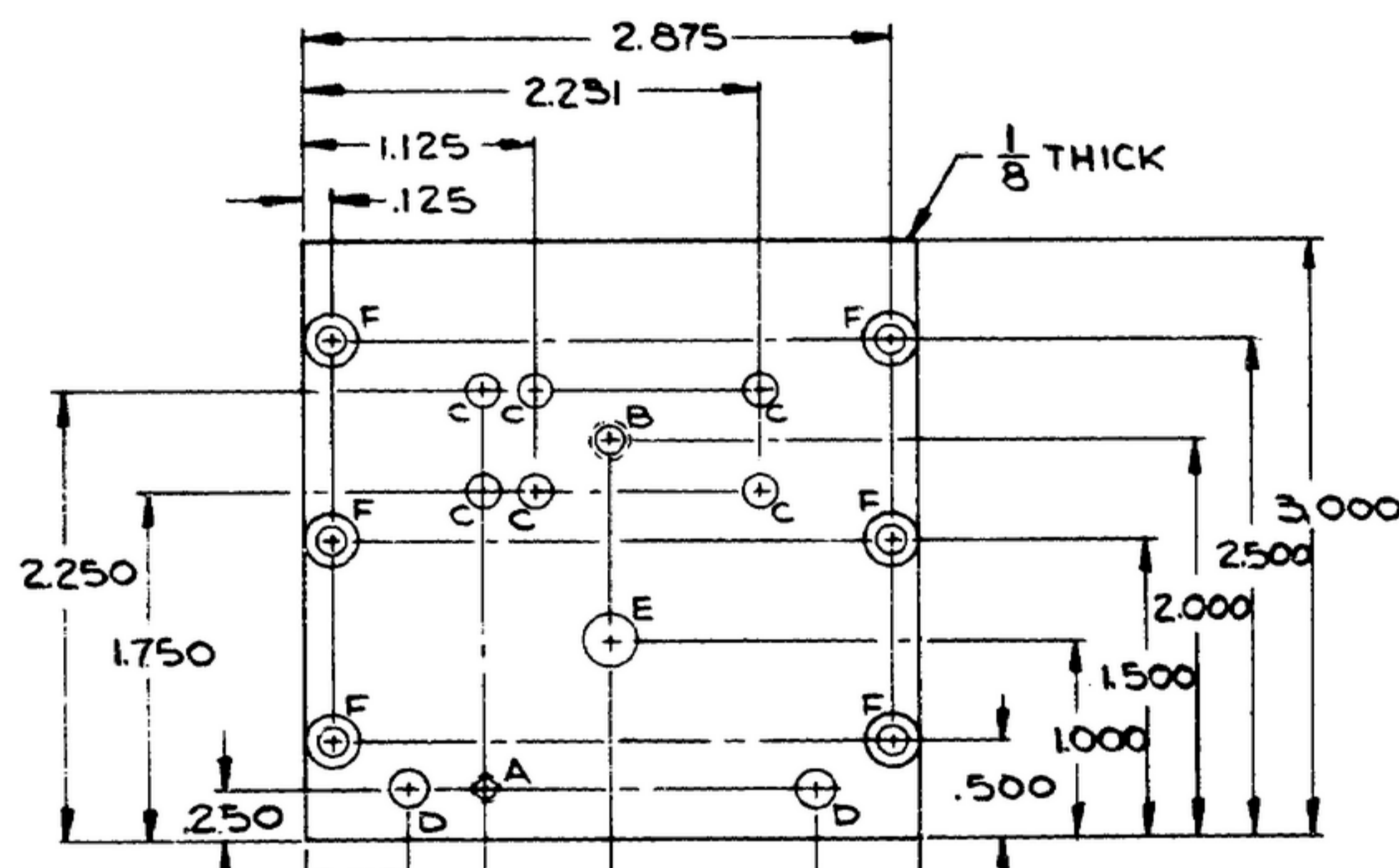
10 SCREW, SPECIAL SCALE 2/1
 MATL: 8-32 NC-2 THD ALLEN HD
 MS. 53T 18-8
 (SEE NOTE 9)

4 COVER SCALE 1/1
 MATL: AL ALLOY 2024 TEMPER T36 PER SPEC QQ-A-355.
 FIN: ZINC PL CL2, TYPE II PER SPEC QQ-Z-325.

3 PLATE SCALE 1/1
 MATL: AL ALLOY 2024 TEMPER T36 PER SPEC QQ-A-355.
 FIN: ZINC PL CL2, TYPE II PER SPEC QQ-Z-325.

NOTES:

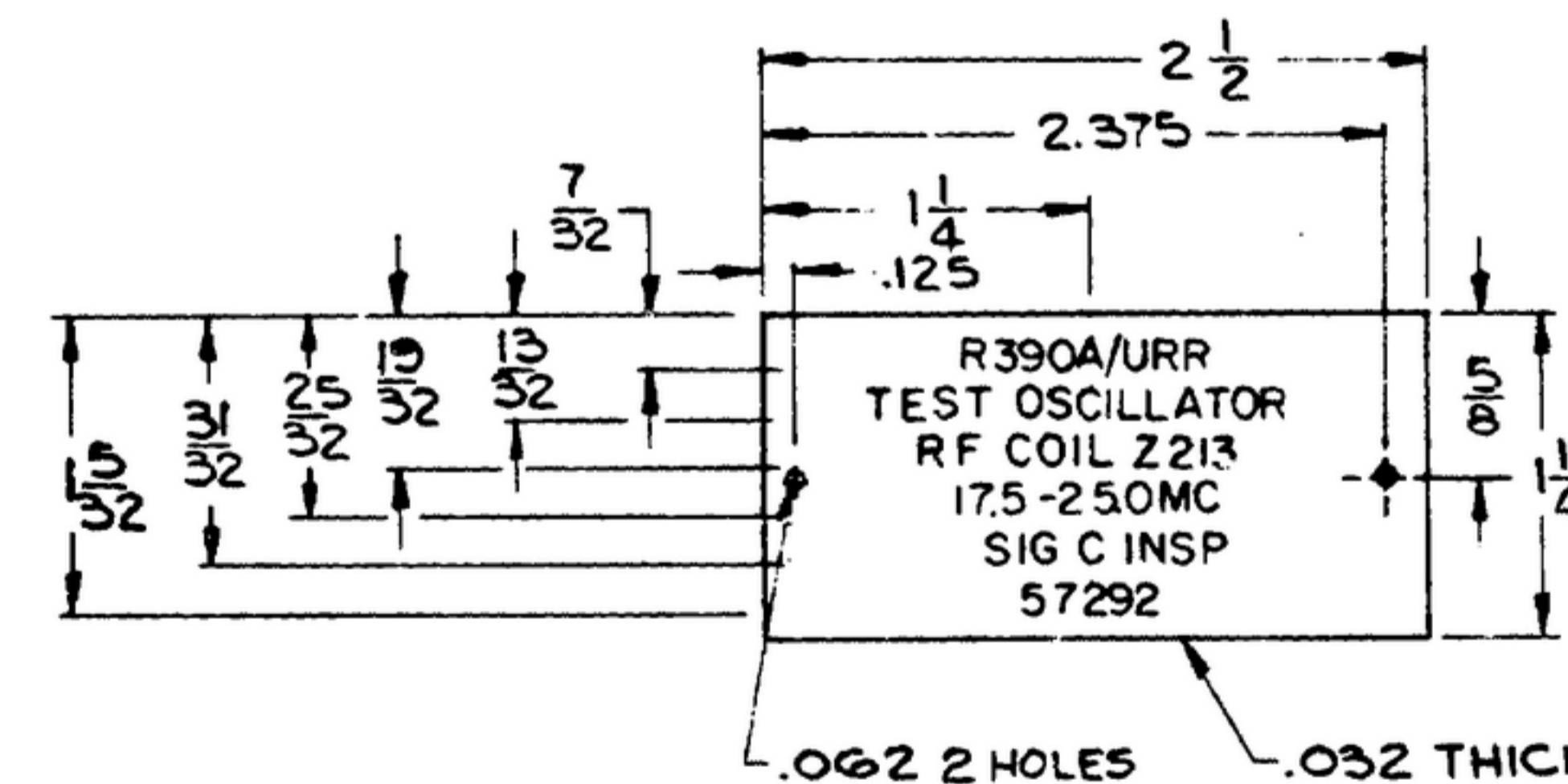
- MAY BE PART NO. 8-32 NC-2 THD ALLEN HEAD MACHINE SCREW, AS SUPPLIED BY ALLEN MFG CO., HARTFORD, CONN. EXCEPT MODIFICATION AS SHOWN.
- SCREW THDS ARE PER FED. SERV HDBK H-28.



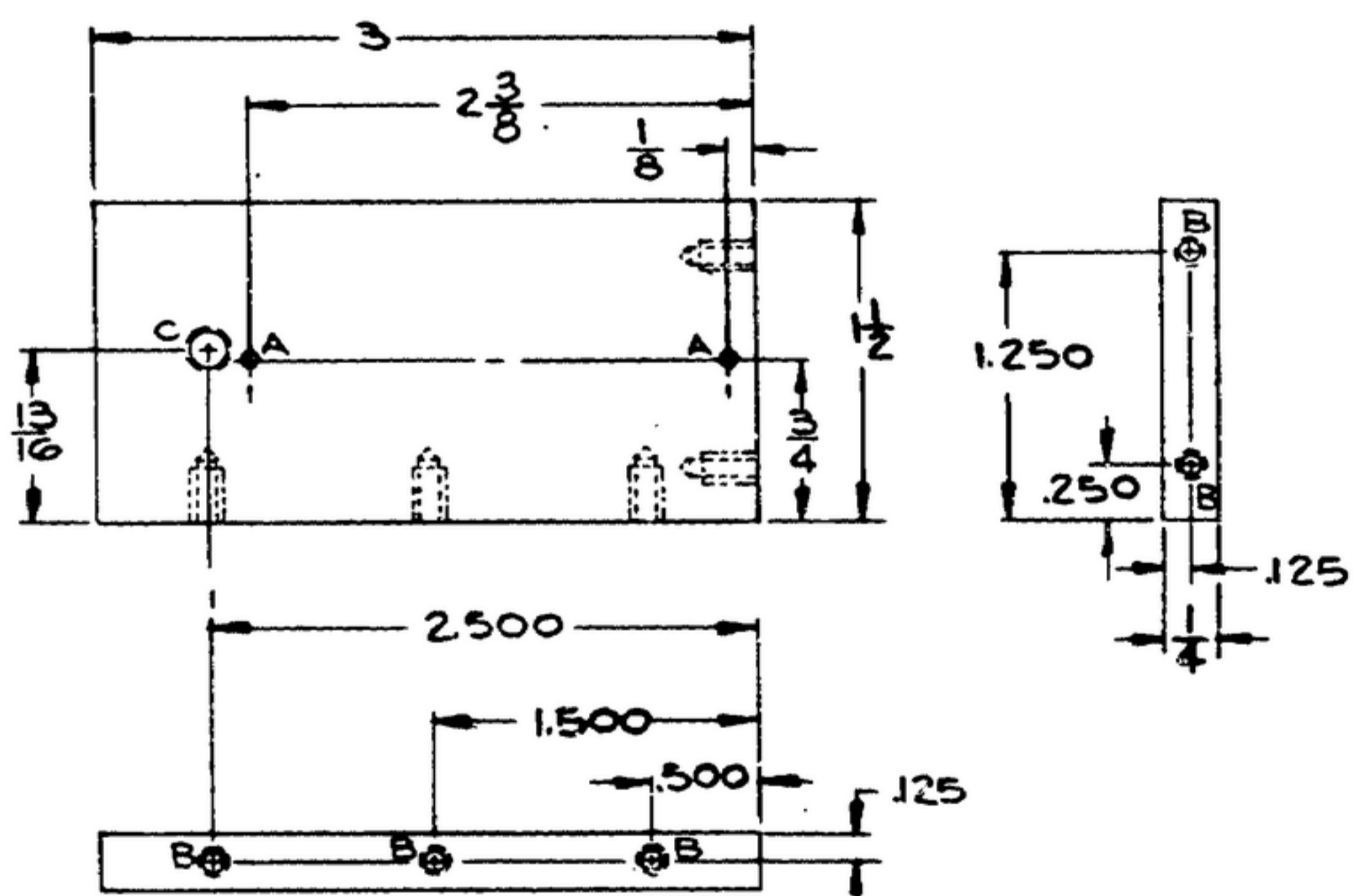
SYM	DESCRIPTION	QTY
A	.052 DIA THRU	2
B	4-40 THD 1/4 DEEP	5
C	8-32 THD THRU	1

5 PLATE SCALE 1/1
 MATL: AL ALLOY 2024 TEMPER T36 PER SPEC QQ-A-355.
 FIN: ZINC PL CL2, TYPE II PER SPEC QQ-Z-325.

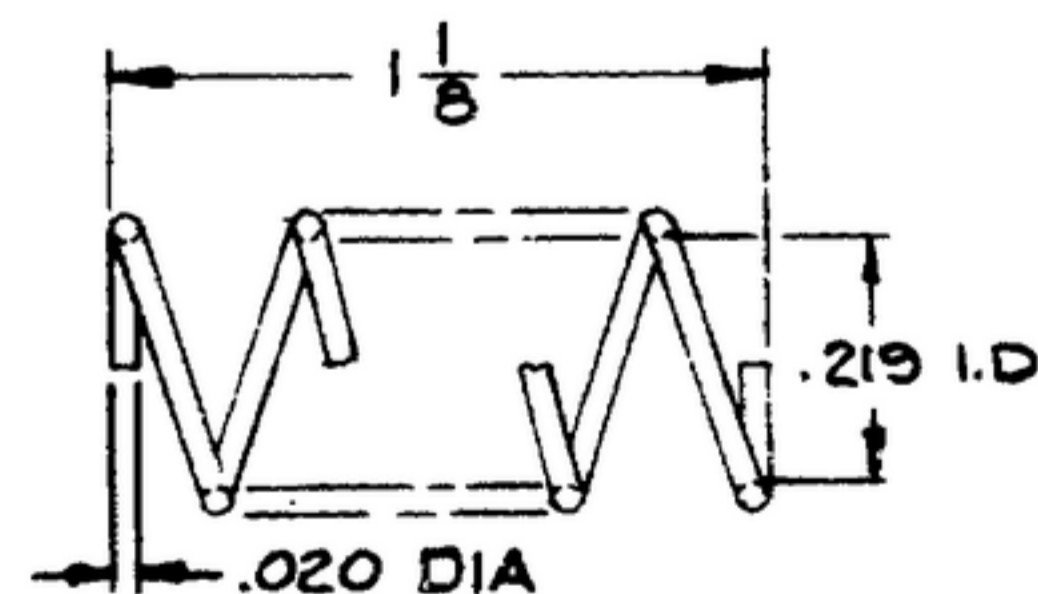
SYM	DESCRIPTION	QTY
A	4-40 THD THRU	1
B	10-32 THD THRU	1
C	.173 DIA THRU	6
D	.193 DIA THRU	2
E	17/64 DIA THRU	1
F	.140 DIA THRU; CSK 82° TO .230 DIA	6



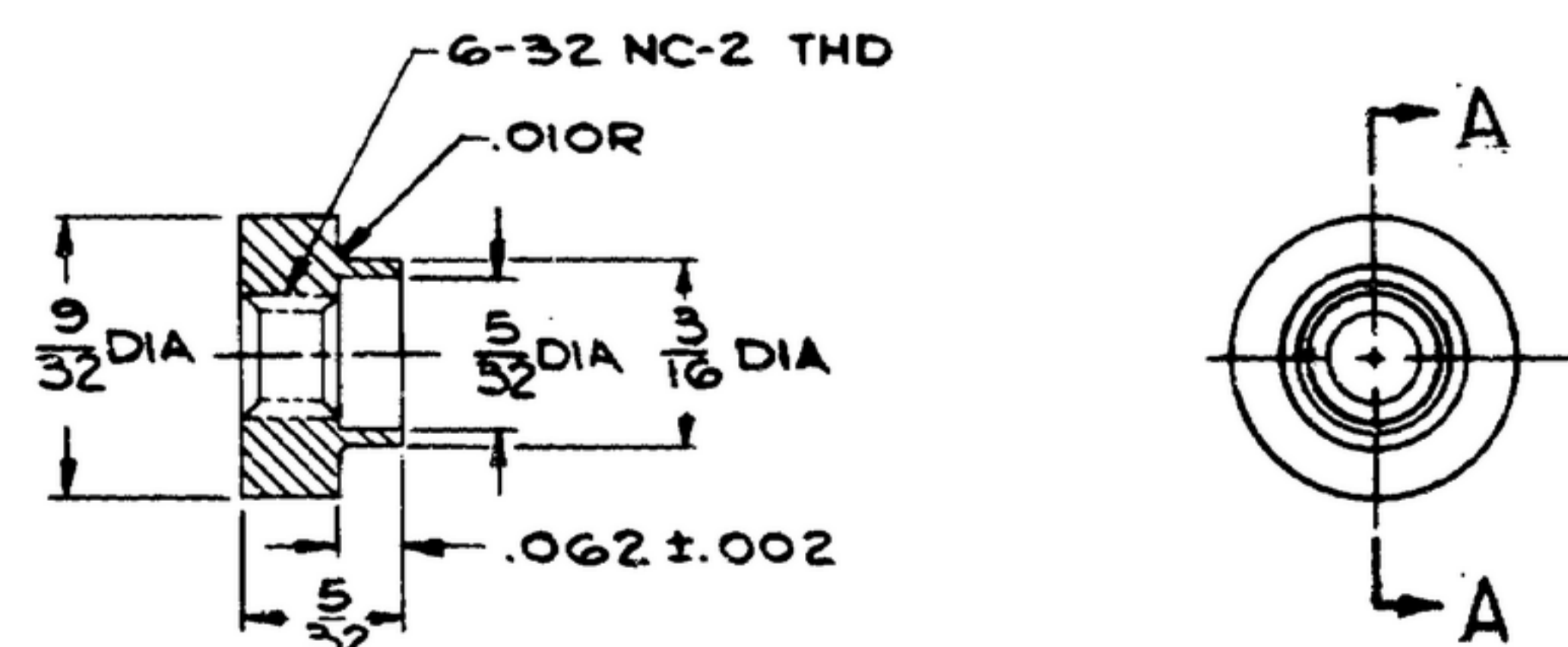
8 NAMEPLATE SCALE 1/1
 MATL: AL ALLOY 5052 TEMPER H-34 PER SPEC QQ-A-318.
 FIN: ZINC PL CL2, TYPE II PER SPEC QQ-Z-325.
 METAL STAMP CHARACTERS IN VERTICAL GOTHIC STYLE, 1/8 HIGH, SPACED & CENTERED AS SHOWN. AFTER FINISH HAS DRIED, FILL CHARACTERS WITH P511B PER SPEC MIL-F-14072.



2 PLATE SCALE 1/1
 MATL: AL ALLOY 2024 TEMPER T36 PER SPEC QQ-A-355.
 FIN: ZINC PL CL2, TYPE II PER SPEC QQ-Z-325.



7 SPRING SCALE 2/1
 MATL: WIRE, MUSIC, SPRING STEEL PER SPEC QQ-W-470
 1/2 MIN WORKING LENGTH
 2 LB LOAD @ 1/4 DEFLECTION
 RIGHT HAND WOUND
 GROUND, SQUARED ENDS



6 NUT SCALE 4/1
 MATL: CRES, CLASS 7, TYPE A PER SPEC QQ-A-762
 FIN: M262 PER SPEC MIL-F-14072.

ORD	PART NO.	DESCRIPTION	MATL	MATL SPEC
SEE TABLE FOR PT NO. LIST OF MATERIAL				
UNLESS OTHERWISE SPECIFIED		MOTOROLA INC.		
DIMENSIONS ARE IN INCHES		ORDER NO. 14385-PC-58-A1		
TOLERANCES ON FRACTIONS DECIMALS ANGLES		SIGNAL CORPS		
± 1/64	± .005	REVIEWED	XXX	
DRAWN E.D.H.		APPROVED		
DATE 15 AUG 58		DATE 15 AUG 58		
CHECKED W.J.P. 14 JAN 58		DATE 15 AUG 58		
APPROVED [Signature]		SCALE		

TEST OSCILLATOR R-390A/URR R.F. COIL Z213 17.5-25.0MC SIG C INSPECTION		DEPARTMENT OF THE ARMY SIGNAL CORPS ENGINEERING LABORATORIES FORT MONMOUTH NEW JERSEY	
SM-D-58794		SHEET 2 OF 2 SHEETS	