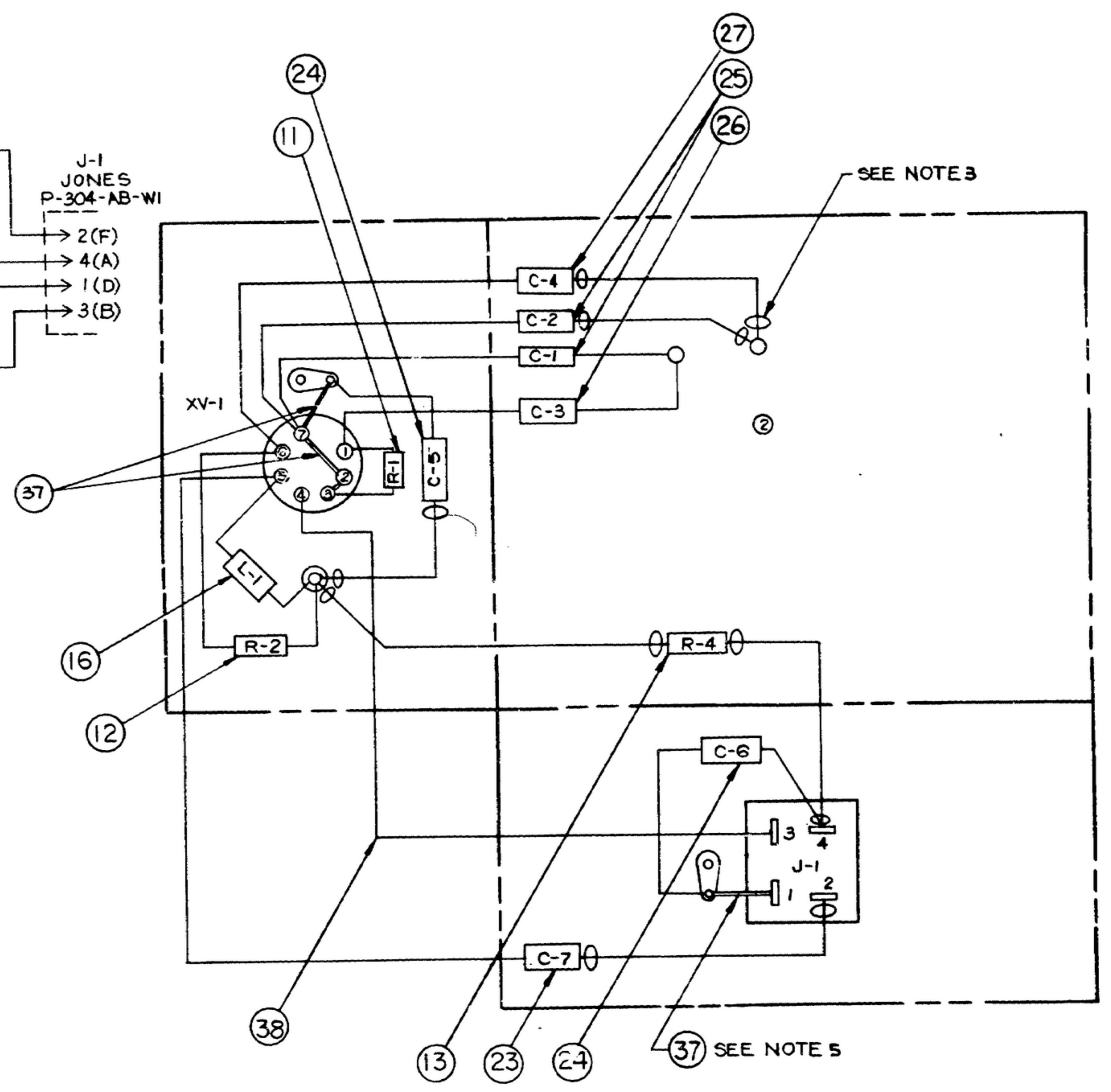
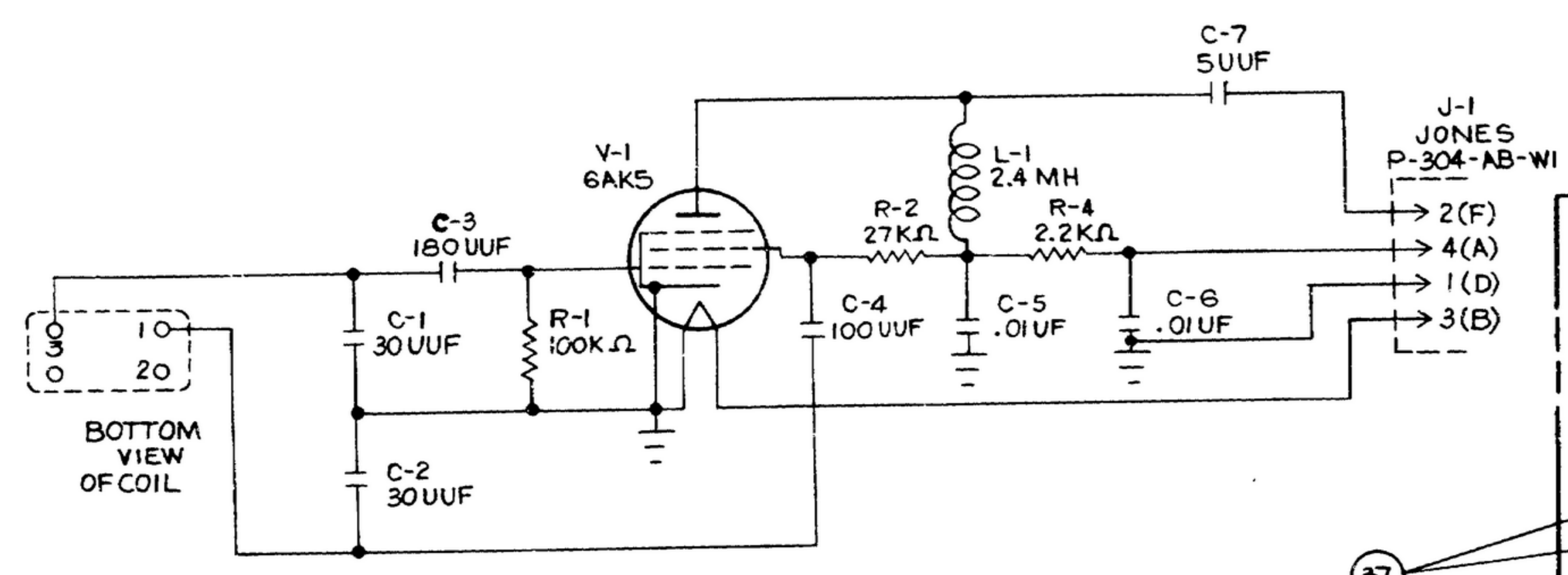
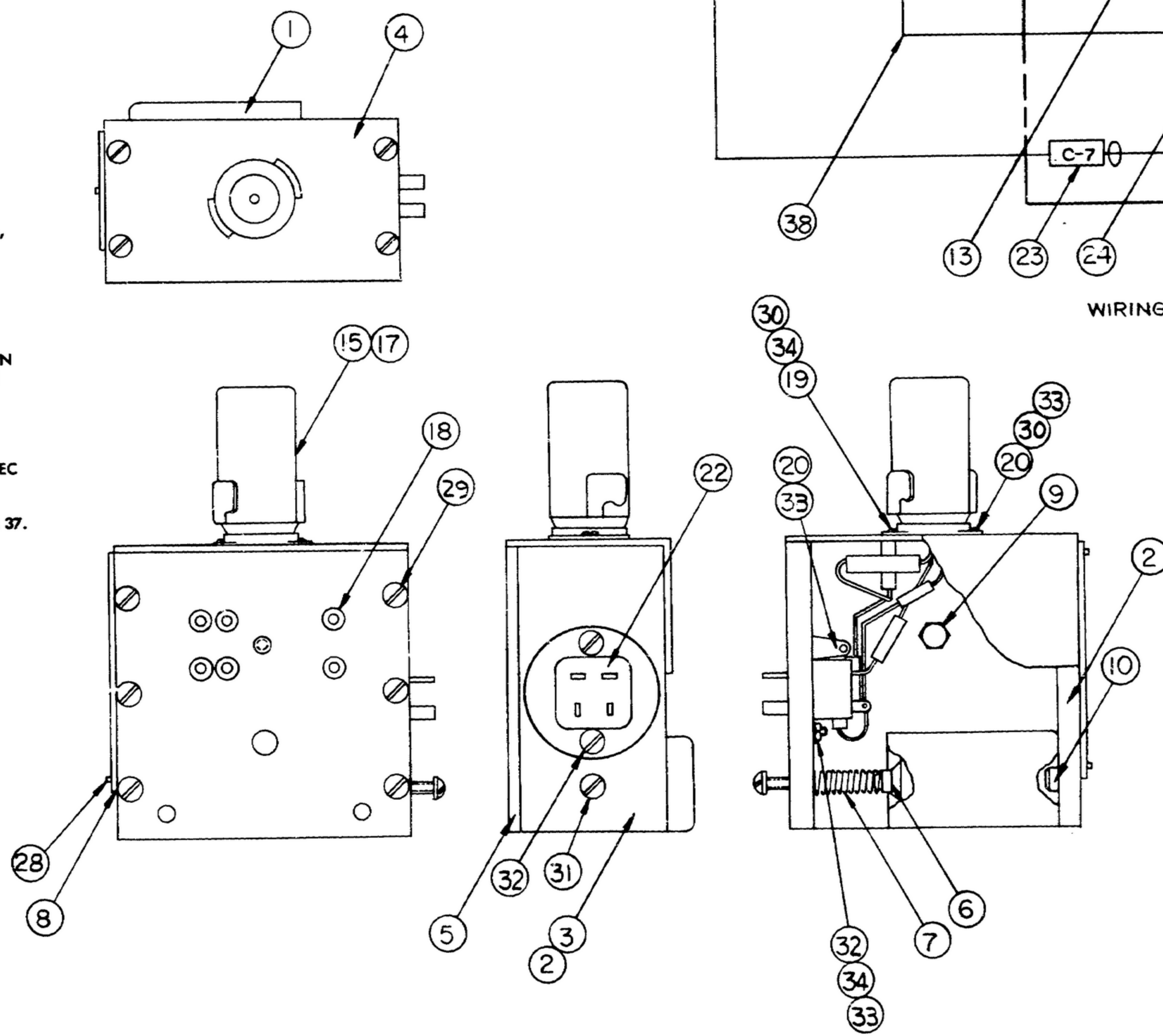


*FOR INFORMATION ONLY, CONTRACTOR MAY AT HIS OPTION DEVIATE FROM THESE PROCESS DETAILS.



- NOTES:
- SUPPLIER FOR: (OR APPROVED EQUIVALENT)
 ITEM 14 & 15: CINCH MFG CO, CHICAGO, ILLINOIS
 ITEM 16: J.W. MILLER CO, LOS ANGELES, CALIF.
 ITEM 17: GENERAL ELECTRIC CORP, SCHEMECTADY, N.Y.
 ITEM 18: SEAELECTRO CORP, NEW ROCHELLE, N.Y.
 ITEM 19: WHITSO INC, SHILLER PARK, ILLINOIS
 ITEM 20: PATTON MAC-GUYER CO, PROVIDENCE, R.I.
 ITEM 21: BENTLY HARRIS MFG CO, CONSHOHOCKEN, PA.
 ITEM 22: HOWARD B. JONES, CHICAGO, ILLINOIS
 ITEM 24: SPRAGUE ELECTRIC CO, NORTH ADAMS, MASS.
 ITEMS 25, 26 & 27: ARCO ELECTRONICS INC, CHICAGO, ILL.
 ITEM 28: PARKER-KALON CORP, CLIFTON, N.Y.
 ITEM 30, 31 & 32: SAMUEL HARRIS & CO, CHICAGO, ILL.
 ITEM 33: CENTRAL SCREW CO, CHICAGO, ILL.
 ITEM 34: SHAKEROOF, DIVISION OF ILLINOIS TOOL WORKS, ELGIN, ILLINOIS.
 - PART TO BE CLEAN & FREE OF BURRS & SHARP EDGES.
 - SYMBOL \ominus INDICATES TUBING (ITEM 21).
 - COIL ASSY (ITEM 1) IS SUPPLIED IN POSITION SHOWN. WHEN IN USE, COIL IS PLUGGED IN SOCKETS (ITEM 18) AND HELD IN PLACE WITH SCREW (ITEM 30).
 - WIRE (ITEM 38) IS SHOWN BY A DOUBLE LINE
 - WIRE SHALL BE TYPE S, DRAWN & ANNEALED, TINNED PER SPEC MIL-W-3861.
 - ELECTRICAL CONNECTIONS SHALL BE SOLDERED USING ITEM 37.
 - COVERCOAT SOLDER CONNECTIONS USING ITEM 36.



ITEM	QTY	SIG PART NO.	Description	MATL-FIN	FIN SIZE OR SHT	NOTES
38			WIRE MW-C22(7)U1		MIL-W-76	1
37			WIRE #22			586
36			SOLDER .062 DIA Sn50WAP#3		QQ-5-571	1 7
35	AS REQD		VARNISH, TYPE 1		MIL-V-173	1 8
34	2		LK WASH., (#4 INT TOOTH)			1 1
			#1204-00			
33	3		NUT, (#4-40 HEX)			1 1
32	2		#4-40x1/2 LG SLOT. FH			1 1
31	1		#6-32x1/2 LG SLOT. BIND. HD			1 1
30	2		MS, (#4-40x1/2 LG SLOT BIND. HD)			1 1
29	10		SCREW AN505-4-3			1
28	2		SCR(#2x3/16 LG RH TAPPING)	STL CAD PL		1 1
27	1		#CM-15-E-101-J			1 1
26	1		#CM-15-E-181-J			1 1
25	2		#CM-15-E-300-J	SILVER MICA		1 1
24	2		#1039452	PAPER		1 1
23	1		CAPACITOR 5 UUF	MICA	MIL-C-81	1
22	1		CONN #P-304-AB-W1			1 1
21	AS REQD		TUBING #18 BH-800			1 1&3
20	2		LUG #3002			1 1
19	1		POST #103A-1			1 1
18	6		SOCKET #5KT-1	TEFLON		1 1
17	1		TUBE #6AK5		MIL-E-1	1 1
16	1		COIL 2.4 MH #4666			1 1
15	1		SHIELD #8660		JAN-5-28	1 1
14	1		SOCKET #13723		JAN-5-28	1 1
13	1		2.2K Ω		MIL-R-11	1
12	1		27K Ω		MIL-R-11	1
11	1		RESISTOR 100K Ω		MIL-R-11	1
10	1		SCREW (#8-32 NC-2)	.250x1/2		2 2
9	1		NUT, (#10-32 NC-2)	1/2 HEXx1/2		2 2
8	1		PLATE	.032x1 1/2x2 1/2		2 2&3
7	1		SPRING	.020x.219		2 2
6	1		NUT, (#6-32 NC-2)	9/32x5/32		2 2
5	1		PLATE	1/8x3x3		2 2
4	1		COVER	.062x1 5/8x3		2 2
3	1		PLATE	1/2x1x3		2 2
2	1		PLATE	1/2x1x3		2 2
1	1	SM-D-58795-1	COIL ASSEMBLY			2 5

UNLESS OTHERWISE SPECIFIED
 DIMENSIONS ARE IN INCHES
 TOLERANCES OR FRACTIONS DECIMALS ANGLES
 ±.01 ±.005

MOTOROLA INC.
 ORDER NO. 14385-FC-58-A1
 SIGNAL CORPS

DEPARTMENT OF THE ARMY
 SIGNAL CORPS ENGINEERING LABORATORIES
 FORT MONMOUTH NEW JERSEY

TEST OSCILLATOR
 R-390A/URR
 R.F. COIL Z216 3.0-2.0 MC
 SIG C INSPECTION

SM-D-58795
 SHEET 1 OF 2 SHEETS

REVIEWED XXX
 APPROVED
 DATE 6 NOV 58
 CHECKED W.J.P. 14 JAN 59
 APPROVED C.F. JAN 59

SC-6L-57655
 DATE 6 NOV 58

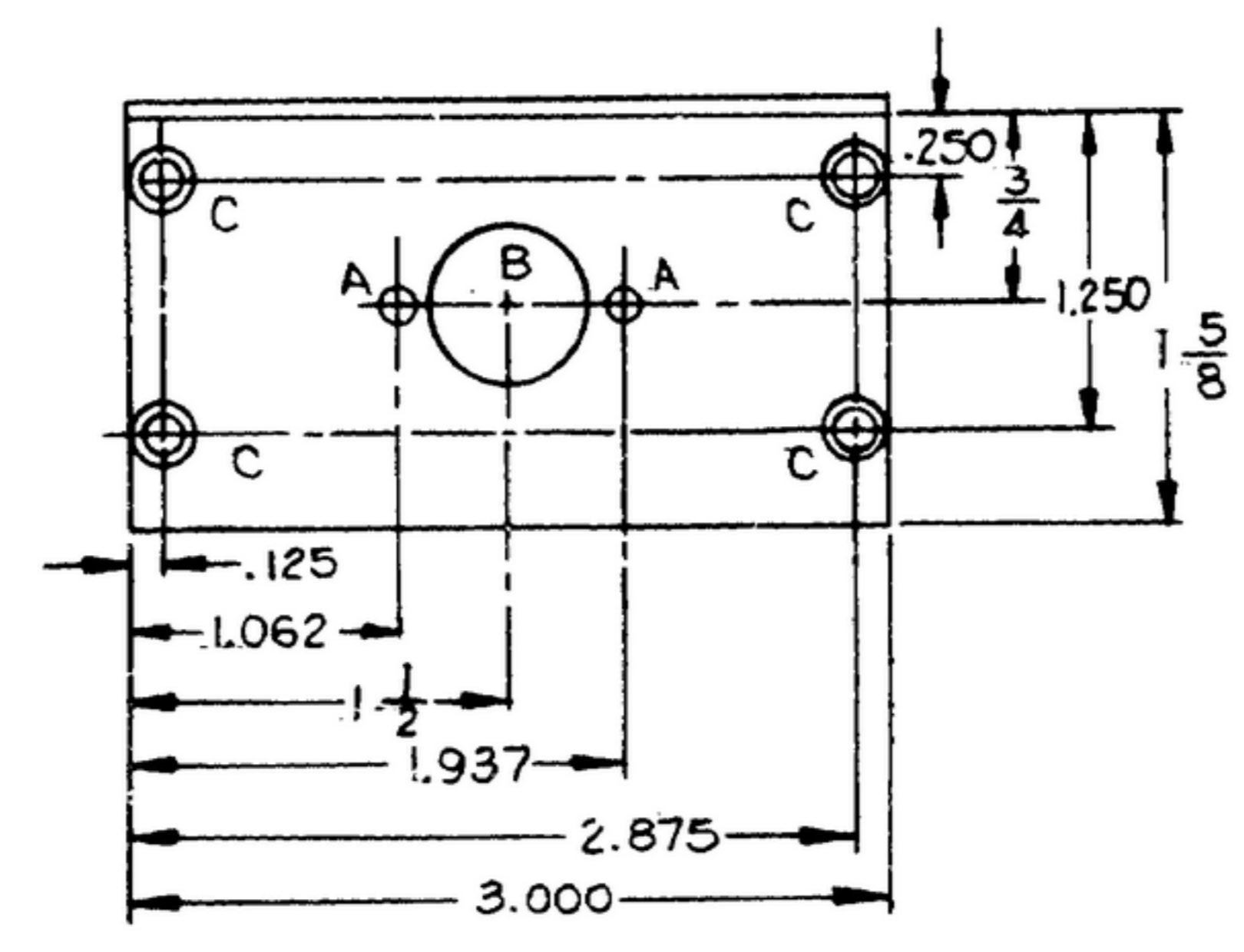
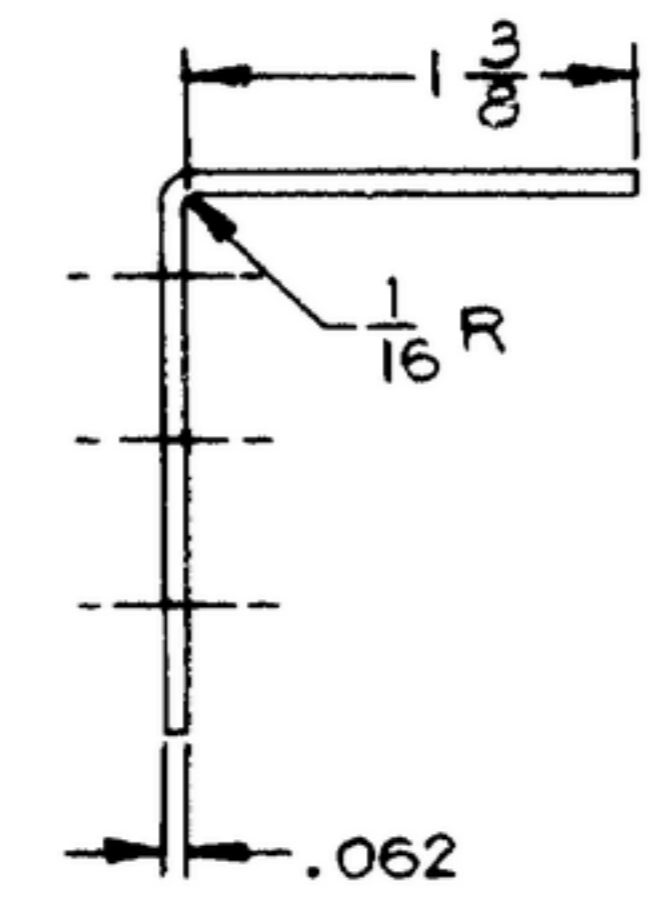
NEXT ASSY USED ON NEXT ARMY USED ON APPLICATION
 APPROVED

WHEN REFERRING TO THIS DRAWING STATE DRAWING NO., APPLICABLE ISSUE SYMBOL, IF ANY, AND DATE.

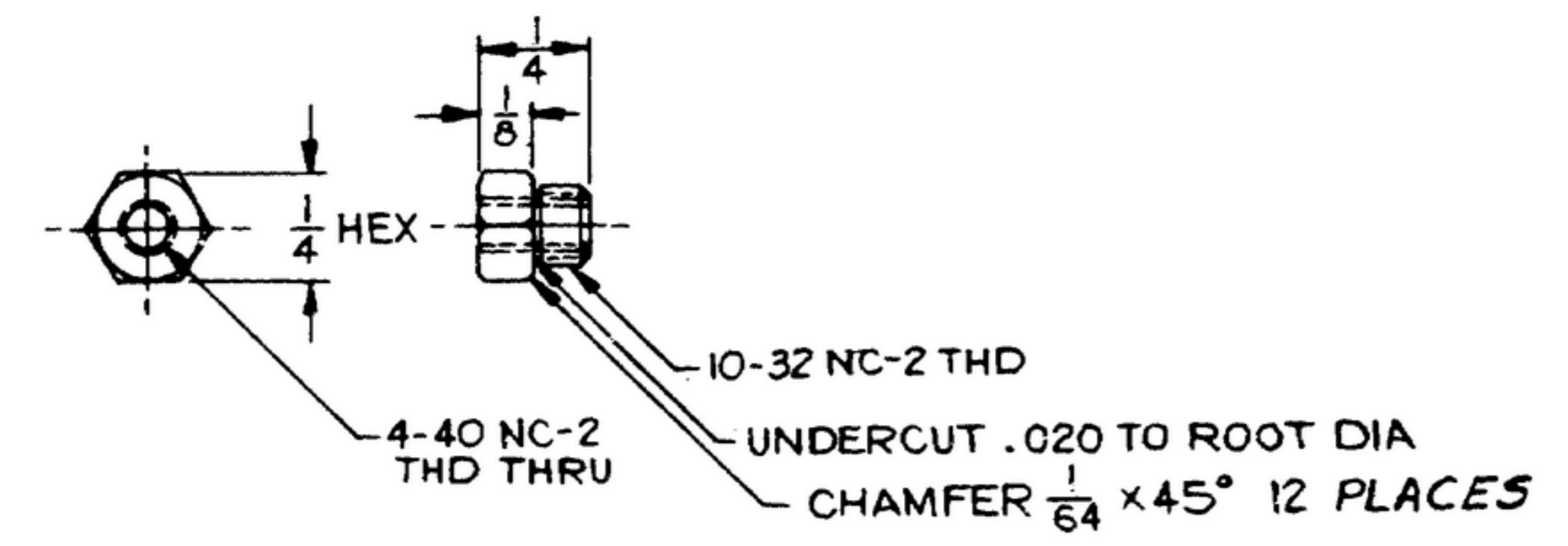
NOTES: THESE DIMENSIONS UNLESS OTHERWISE SPECIFIED ARE IN INCHES AND SHOULD BE OBSERVED AS SUCH IN CONNECTION WITH ANY DIMENSIONAL TOLERANCES OR FINISHES SPECIFIED THEREON. THE PARTS MUST BE MANUFACTURED TO THESE DIMENSIONS AND FINISHES, AND THE PARTS MUST BE IDENTIFIED BY THESE DIMENSIONS AND FINISHES. THE PARTS MUST BE IDENTIFIED BY THESE DIMENSIONS AND FINISHES. THE PARTS MUST BE IDENTIFIED BY THESE DIMENSIONS AND FINISHES.

*FOR INFORMATION ONLY, CONTRACTOR MAY AT HIS OPTION DEVIATE FROM THESE PROCESS DETAILS.

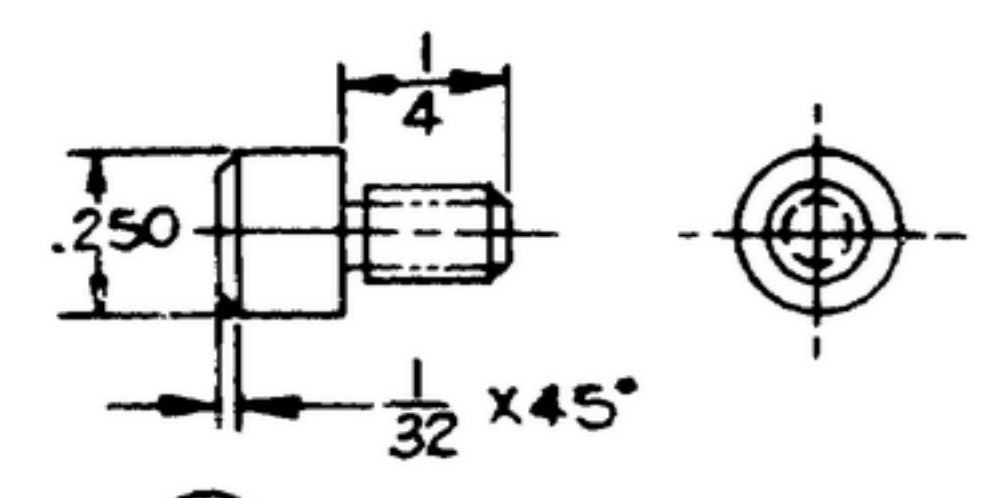
HOLE LEGEND		
SYM	DESCRIPTION	QTY
A	.125 DIA THRU	2
B	.625 DIA THRU	1
C	.140 DIA THRU & CSK 82° TO .230 DIA	4



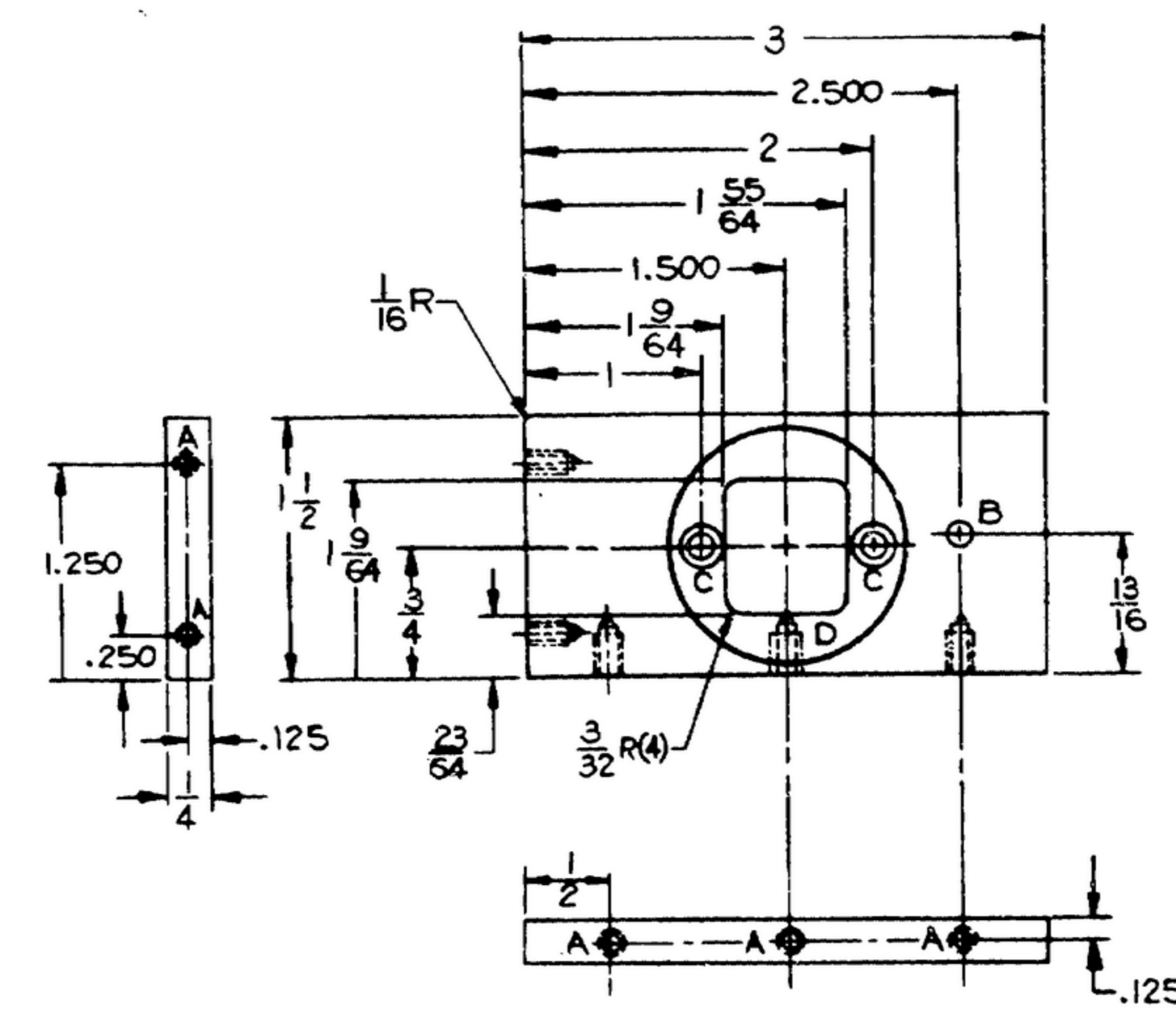
④ COVER SCALE 1/1
 MATL: AL ALY 2024 TEMPER T36 PER SPEC QQ-A-355
 FIN: ZINC PL CL 2, TYPE II PER SPEC QQ-Z-325.



⑨ NUT, SPECIAL SCALE 2/1
 MATL: CRES, COMP 3035, PHYS CONDA, SURFACE COND C PER SPEC MIL-S-7120.
 FIN: PASS. PER SPEC MIL-S-5002

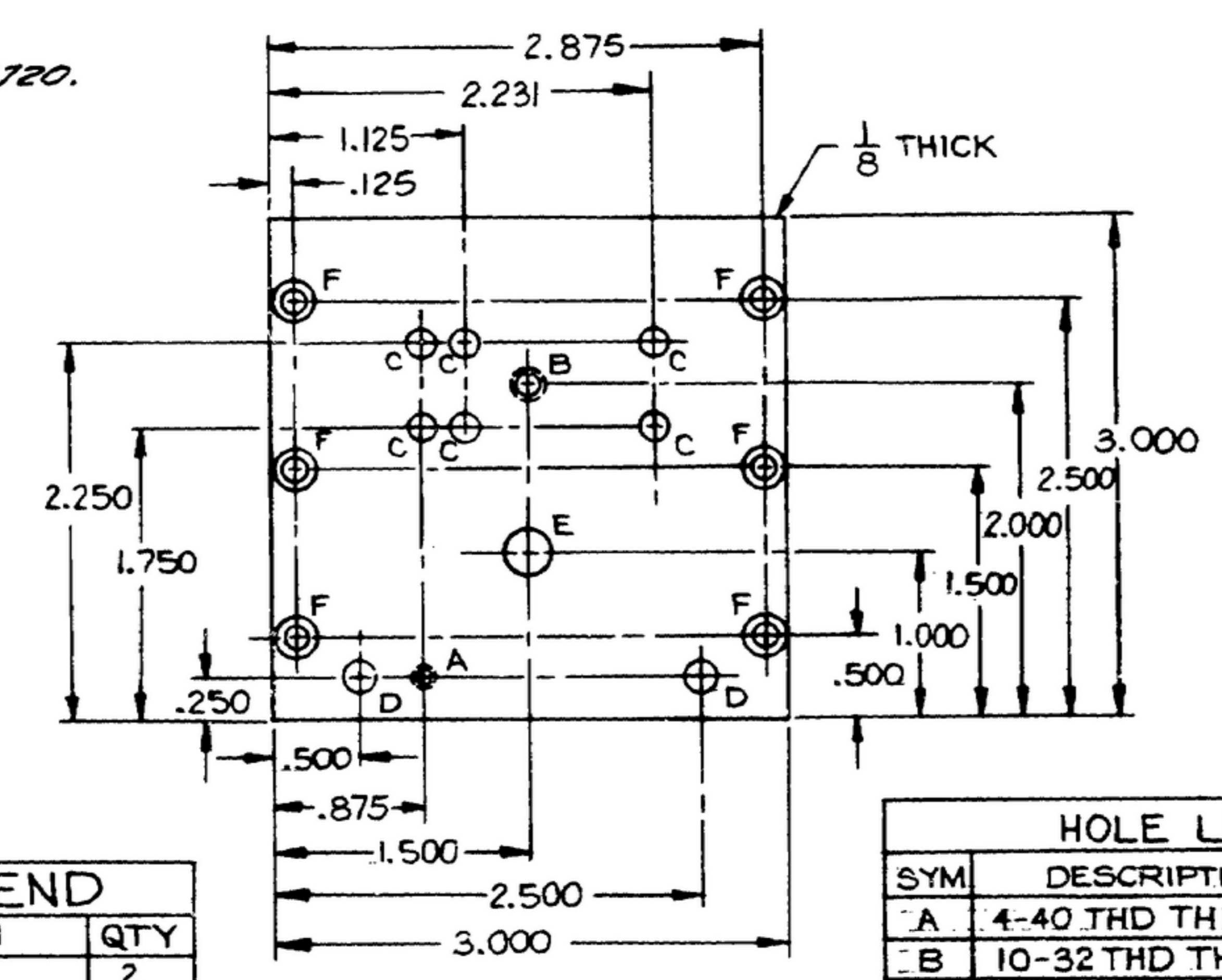


⑩ SCREW, SPECIAL SCALE 2/1
 MATL: 8-32 NC-2 THD ALLEN HD MS, S5T 18-8 (SEE NOTE 9)



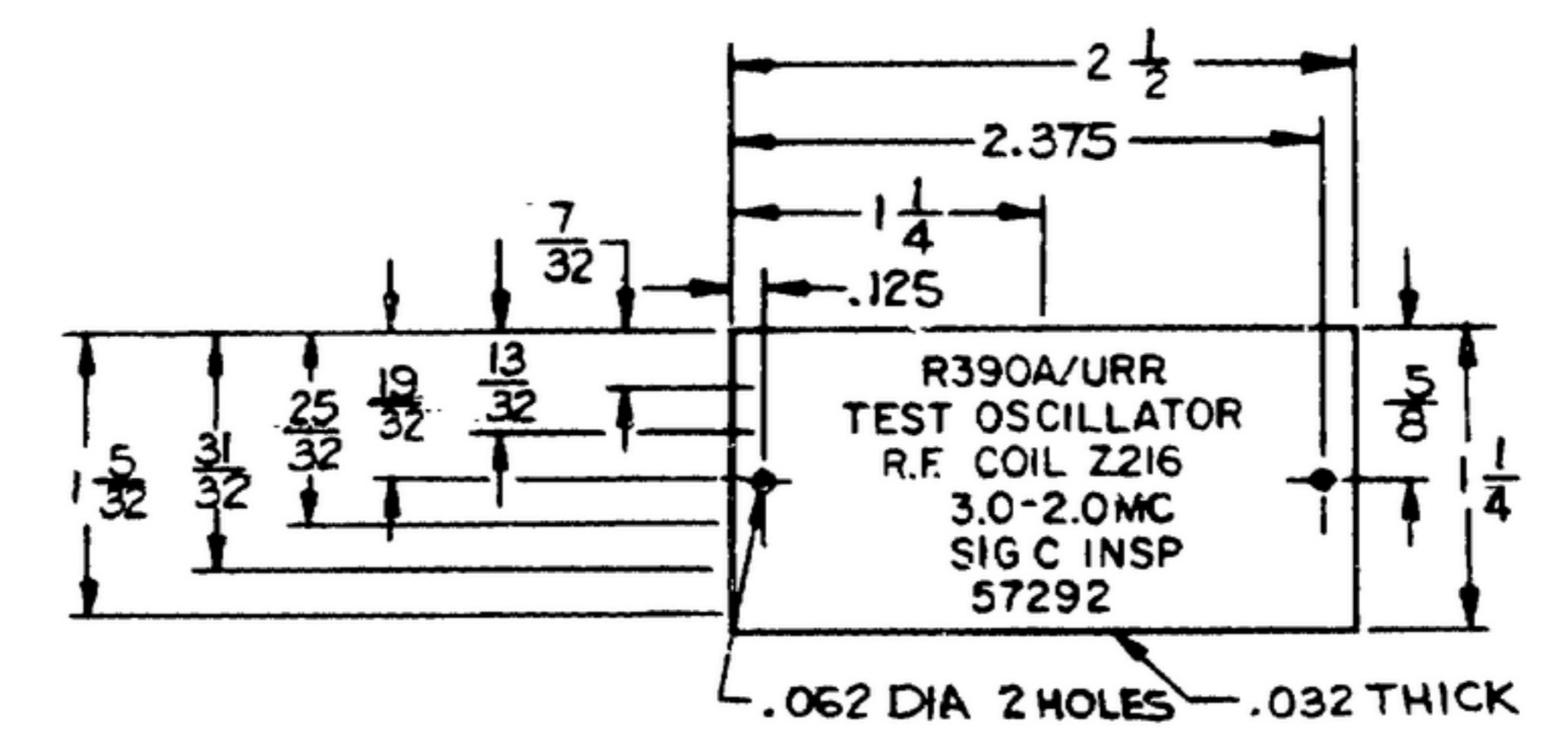
HOLE LEGEND		
SYM	DESCRIPTION	QTY
A	4-40 NC-2 THD 1/4 DEEP	5
B	.144 DIA THRU	1
C	.140 DIA THRU & CSK 82° TO .230 DIA	2
D	CBORE 1 11/32 DIA 3/16 DEEP	1

② PLATE SCALE 1/1
 MATL: AL ALY 2024 TEMPER T36 PER SPEC QQ-A-355.
 FIN: ZINC PLATE CL 2, TYPE II PER SPEC QQ-Z-325.



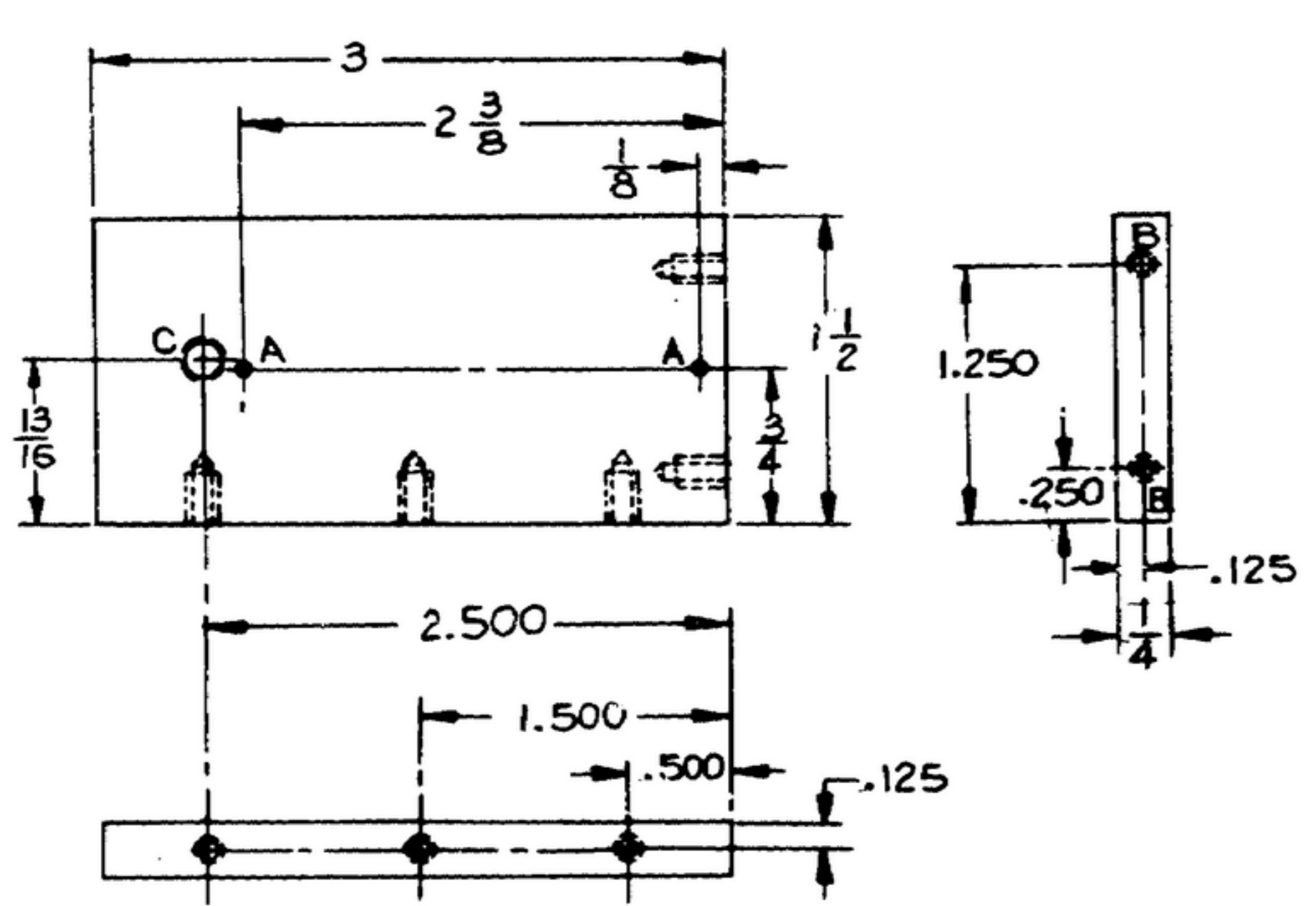
HOLE LEGEND		
SYM	DESCRIPTION	QTY
A	4-40 THD THRU	1
B	10-32 THD THRU	1
C	.173 DIA THRU	6
D	.193 DIA THRU	2
E	17/64 DIA THRU	1
F	.140 DIA THRU & CSK 82° TO .230 DIA	6

⑤ PLATE SCALE 1/1
 MATL: AL ALY 2024 TEMPER T36 PER SPEC QQ-A-355.
 FIN: ZINC PLATE CL 2, TYPE II PER SPEC QQ-Z-325.

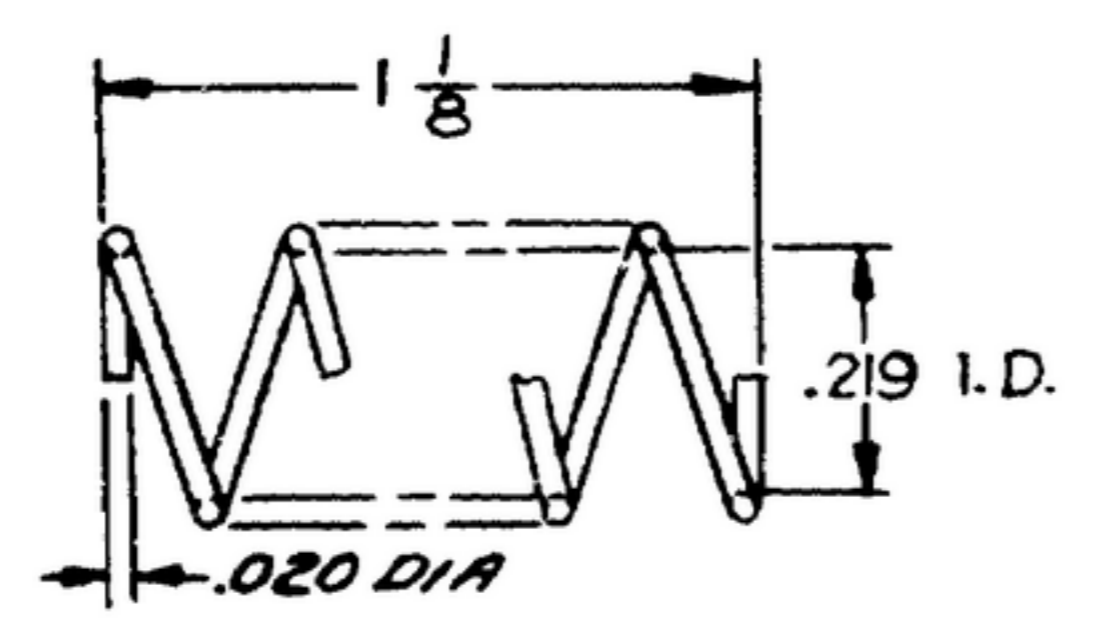


⑧ NAMEPLATE SCALE 1/1
 MATL: AL ALY 5052 TEMPER H34 PER SPEC QQ-A-318.
 FIN: ZINC PLATE CL 2, TYPE II PER SPEC QQ-Z-325.
 METAL STAMP CHARACTERS IN VERTICAL GOTHIC STYLE 1/8 HIGH, SPACED & CENTERED AS SHOWN. AFTER FINISH HAS DRIED, FILL CHARACTERS WITH P511B PER SPEC MIL-F-14072.

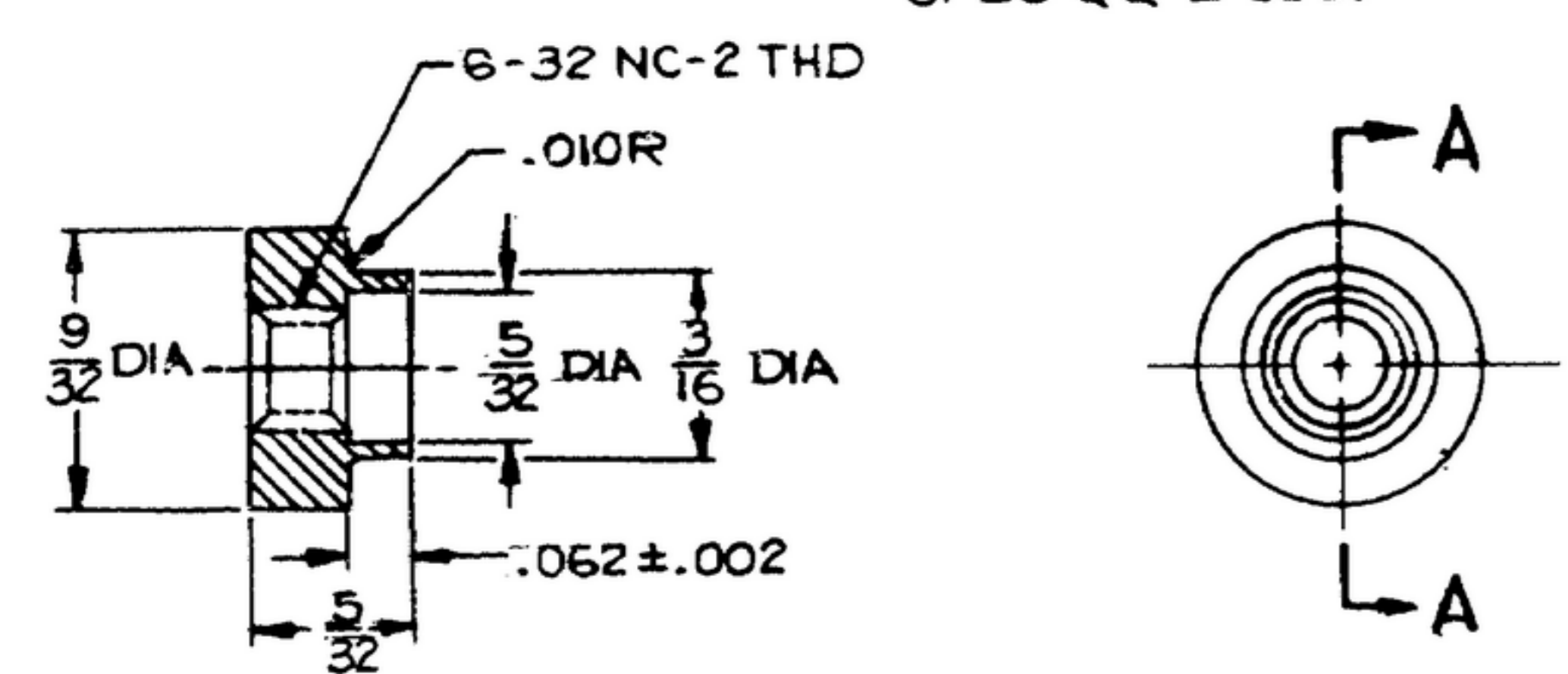
NOTES:
 9. MAY BE PART NO. 8-32 NC-2 THD ALLEN HD MACHINE SCREW, AS SUPPLIED BY ALLEN MFG CO, HARTFORD, CONN. EXCEPT MODIFICATION AS SHOWN.
 10. SCREW THREADS ARE PER FED. SERV. HND BK H-28.



③ PLATE SCALE 1/1
 MATL: AL ALY 2024 TEMPER T36 PER SPEC QQ-A-355.
 FIN: ZINC PLATE CL 2, TYPE II PER SPEC QQ-Z-325.



⑦ SPRING SCALE 2/1
 MATL: WIRE, MUSIC SPRING STEEL PER SPEC QQ-W-470.
 1/2 MIN WORKING LENGTH
 2 LB LOAD @ 1/4 DEFLECTION
 RIGHT HAND WOUND
 GROUND, SQUARED ENDS.



SECTION AA ⑥ NUT SCALE 4/1
 MATL: CRES CLASS 7, TYPE A PER SPEC QQ-S-763.
 FIN: M262 PER SPEC MIL-F-14072.

UNLESS OTHERWISE SPECIFIED	MOTOROLA INC.	TEST OSCILLATOR	DEPARTMENT OF THE ARMY
DIMENSIONS ARE IN INCHES	ORDER NO. 14285-PC-58-A1	R-390A/URR	SIGNAL CORPS ENGINEERING
TOLERANCES ON FRACTIONS DECIMALS ANGLES	DATE 6 NOV 58	R.F. COIL Z216 3.0-2.0MC	LABORATORIES
± 1/64 ± .005	DRAWN J.J.L.	SIG C INSPECTION	PORT MONMOUTH NEW JERSEY
	DATE 6 NOV 58		SM-D-58795
	CHECKED W.J.P. 12/10/58		SHEET 2 OF 2 SHEETS
NEXT ASSY USED ON	APPROVED [Signature]	SCALE	
*MOTOROLA APPL	APPLICATION	DATE 6 NOV 58	