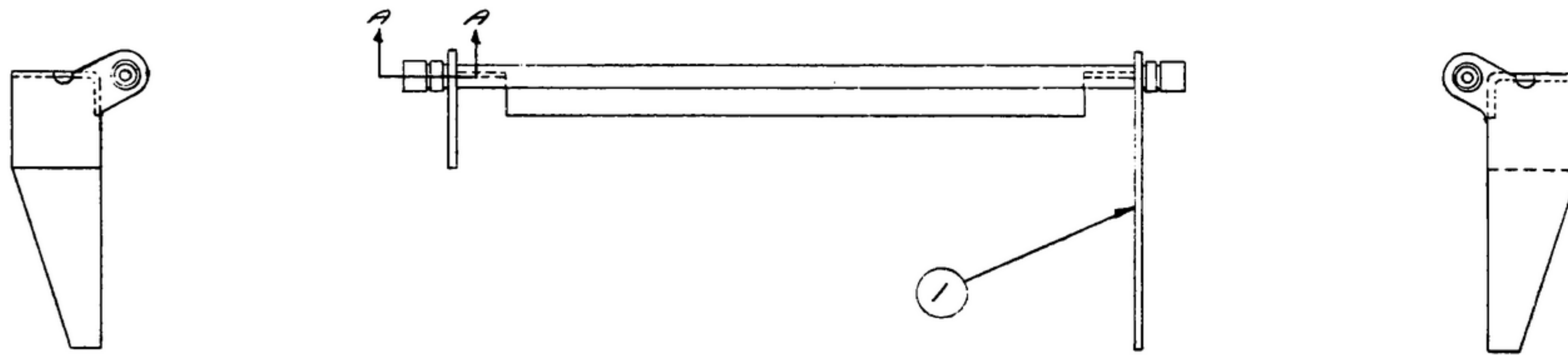


WORK: THIS GOVERNMENT DRAWING, SPECIFICATIONS, OR OTHER DATA ARE MADE FOR ANY PURPOSE OTHER THAN IN CONNECTION WITH A SPECIFICALLY RELATED GOVERNMENT PROCUREMENT OPERATION. THE UNITED STATES GOVERNMENT THEREBY MAKES NO REPRESENTATION OR WARRANTY AS TO THE ACCURACY, COMPLETENESS, OR THE FACT THAT THE INFORMATION HAS BEEN PROVIDED FOR THE PURPOSES OF THE DRAWING, SPECIFICATIONS, OR OTHER DATA. NO OTHER DATA IS TO BE INCLUDED IN APPLICATIONS OR OTHERWISE AS TO ANY DRAWING, SPECIFICATIONS, OR OTHER DATA. THE DRAWING, SPECIFICATIONS, OR OTHER DATA ARE MADE FOR ANY PURPOSE OTHER THAN IN CONNECTION WITH A SPECIFICALLY RELATED GOVERNMENT PROCUREMENT OPERATION. THE UNITED STATES GOVERNMENT THEREBY MAKES NO REPRESENTATION OR WARRANTY AS TO THE ACCURACY, COMPLETENESS, OR THE FACT THAT THE INFORMATION HAS BEEN PROVIDED FOR THE PURPOSES OF THE DRAWING, SPECIFICATIONS, OR OTHER DATA. NO OTHER DATA IS TO BE INCLUDED IN APPLICATIONS OR OTHERWISE AS TO ANY DRAWING, SPECIFICATIONS, OR OTHER DATA.

"THIS DOCUMENT HAS BEEN PREPARED BY THE GOVERNMENT AND MAY BE REPRODUCED AND USED IN CONNECTION WITH ANY GOVERNMENT PROCUREMENT OR MAINTENANCE OPERATION."

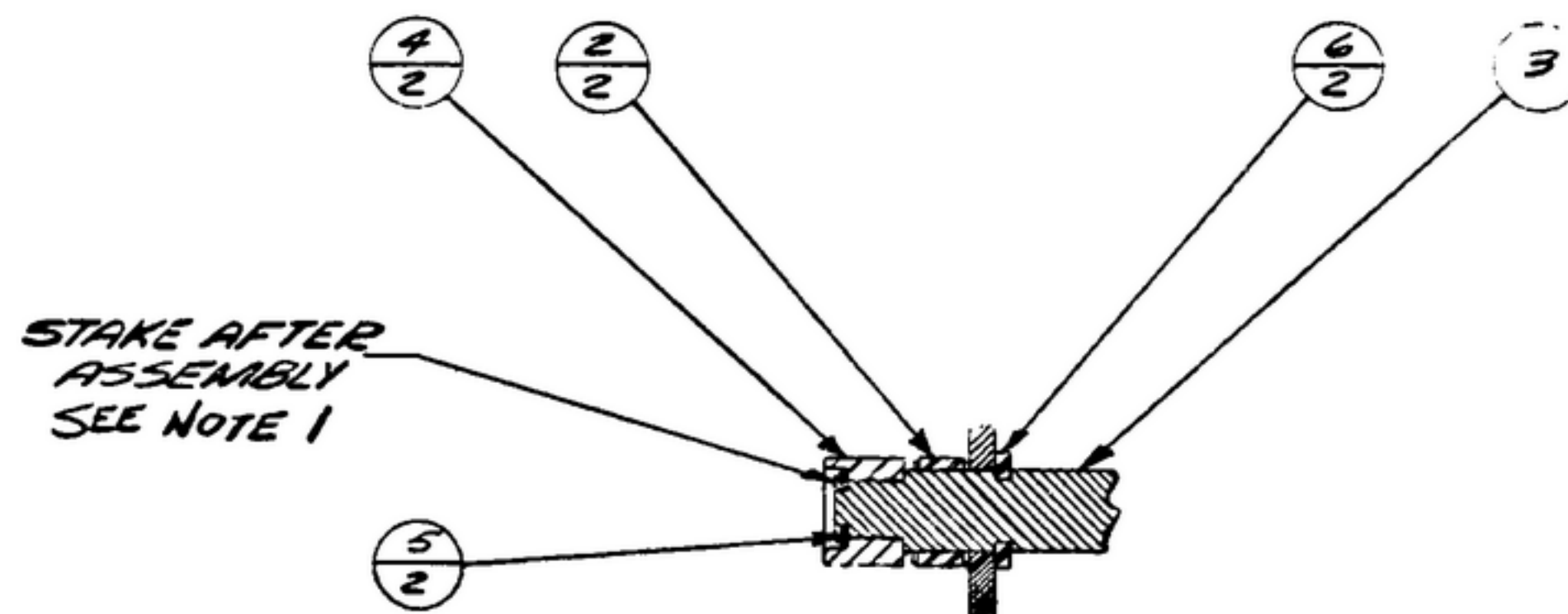
NOTE: *FOR INFORMATION ONLY, CONTRACTOR MAY AT HIS OPTION DEVIATE FROM THESE PROCESS DETAILS

REVISIONS			
SYM	DESCRIPTION	DATE	APPROVAL



NOTES:

1. ROLLERS MUST ROTATE FREELY AFTER STAKING.
2. ROLLER BORE TO BE LUBRICATED WITH LUBRICANT (1) PER SPEC. MIL-L-7870 BEFORE ASS'Y.
3. IN ALL SPLIT BALLOONS TOP FIGURE IS MATERIAL LIST ITEM INDICATOR & BOTTOM FIGURE IS QUANTITY.



SECTION "A-A"
TYPICAL BOTH ENDS OF SHAFT
SCALE 2:1

ITEM	SYM	PART NO.	REQD	PART NO.	DESCRIPTION	MATL	MATL SPEC	NOTES
7	11511255-6	AS REQD	2	MS-16633-4017	LUBRICANT			2
6			2	SM-B-170822	RING, RETAINING			
5			2	SM-B-170822	WASHER			
4	574210		2	SM-B-170739	ROLLER			
3			1	SM-B-343612	SHAFT			
2			2	SM-B-343612	BEARING			
1			1	SM-C-249007	BACK-ASSEMBLY			

LIST OF MATERIAL

UNLESS OTHERWISE SPECIFIED DIMENSIONS ARE IN INCHES TOLERANCES ON FRACTIONS DECIMALS ANGLES		STEWART WARNER ELECTRAGINGS ORDER NO. 42428-PC-59		DEPARTMENT OF THE ARMY SIGNAL CORPS ENGINEERING LABORATORIES FORT MONMOUTH NEW JERSEY	
SM-D-343629 SCALE 2:1/775		SIGNAL CORPS			
NEXT ASSY USED ON		REVIEWED P.M.E.		BACK ASS'Y - HIGH	
APPLICATION		APPROVED P.M.E.			
		DATE 2 NOV 59		SCALE 1/1	
				SM-C-343630	