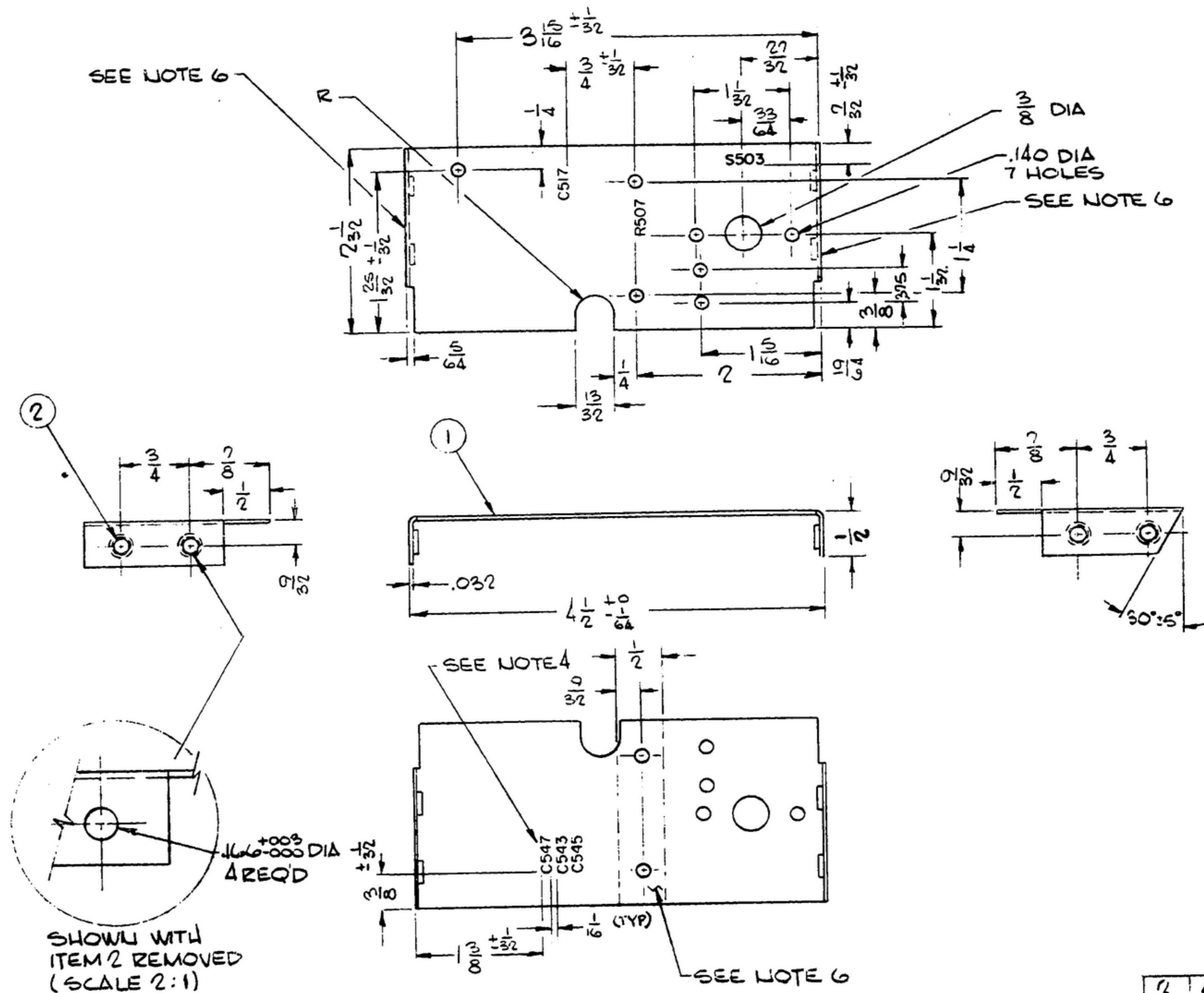


NOTICE - WHEN GOVERNMENT DRAWINGS, SPECIFICATIONS, OR OTHER DATA ARE USED FOR ANY PURPOSE OTHER THAN IN CONNECTION WITH A DEFINITELY RELATED GOVERNMENT PROCUREMENT OPERATION, THE UNITED STATES GOVERNMENT THEREBY INCURS NO RESPONSIBILITY NOR ANY OBLIGATION WHATSOEVER, AND THE FACT THAT THE GOVERNMENT MAY HAVE FORMULATED, FURNISHED, OR IN ANY WAY SUPPLIED THE SAID DRAWINGS, SPECIFICATIONS OR OTHER DATA IS NOT TO BE REGARDED BY IMPLICATION OR OTHERWISE AS IN ANY MANNER LICENSING THE HOLDER OR ANY OTHER PERSON OR CORPORATION, OR CONVERTING ANY RIGHTS OR PERMISSION TO MANUFACTURE, USE, OR SELL, ANY PATENTED INVENTION THAT MAY IN ANY WAY BE RELATED THERETO.

"THIS DOCUMENT HAS BEEN PURCHASED BY THE GOVERNMENT AND MAY BE REPRODUCED AND USED IN CONNECTION WITH ANY GOVERNMENT PROCUREMENT OR MAINTENANCE OPERATION."

NOTE: DATA MARKED BY AN ASTERISK(\*) ARE FOR INFORMATION ONLY, CONTRACTOR MAY, AT HIS OPTION, DEVIATE FROM THESE DETAILS

REVISIONS			
SYM	DESCRIPTION	DATE	APPROVAL



NOTES

- MATERIAL: ALUMINUM ALLOY 5052, TEMPER H34, PER SPEC QQ-A-250/B.
- FINISH: E513 PER SPEC MIL-F-14072.
- 1/16 MAX INSIDE BELD RADIUS
- ALL CHARACTERS TO BE 3/32 HIGH GOTHIC TYPE PER SPEC MIL-M-13231 GROUP II COLOR TO BE BLACK, COLOR CHIP NO. 27038 PER FED-STD-595. MARKING TO BE CENTRALLY LOCATED ±1/32 UNLESS OTHERWISE SHOWN. COVER DESIGNATION WITH 1 COAT OF VARNISH PER MIL-V-173 TYPE II.
- SUPPLIED BY PENN ENGINEERING & MFG. CORP, DOYLESTOWN, PENN. PART NO. CLS-440-0,\*303 ST/STL OR EQUAL
- MASK ALL AREAS DESIGNATED BEFORE FINISHING.

ITEM	REQD	PART NO.	DESCRIPTION	SPECIFICATION
2	4	SM-C-505826-2	FASTENER, SELF-CLINCHING	5
1	1	SM-C-505826-1	SHIELD-I.F.	

LIST OF MATERIAL

UNLESS OTHERWISE SPECIFIED	ELECTRONIC ASSISTANCE CORPORATION	DEPARTMENT OF THE ARMY
DIMENSIONS ARE IN INCHES	U-6-001 89 (E)	U. S. ARMY SIGNAL MATERIEL SUPPORT AGENCY
TOLERANCES ON FRACTIONS DECIMALS ANGLES	SIGNAL CORPS	FORT MONMOUTH NEW JERSEY
±1/64 ±.005 ±1°	REVIEWED EC-2 (RMB)	SM-C-505826
DRAWN G.A.P.	APPROVED EC-2 (RMB)	CODE 80063
CHECKED DIMENSION	DATE 11 APR 66	10F1
NEXT ASSY USED ON APPLICATION	SCALE 1/1	

WHEN REFERRING TO THIS DRAWING STATE DRAWING NO., APPLICABLE ISSUE SYMBOL, IF ANY, AND DATE.