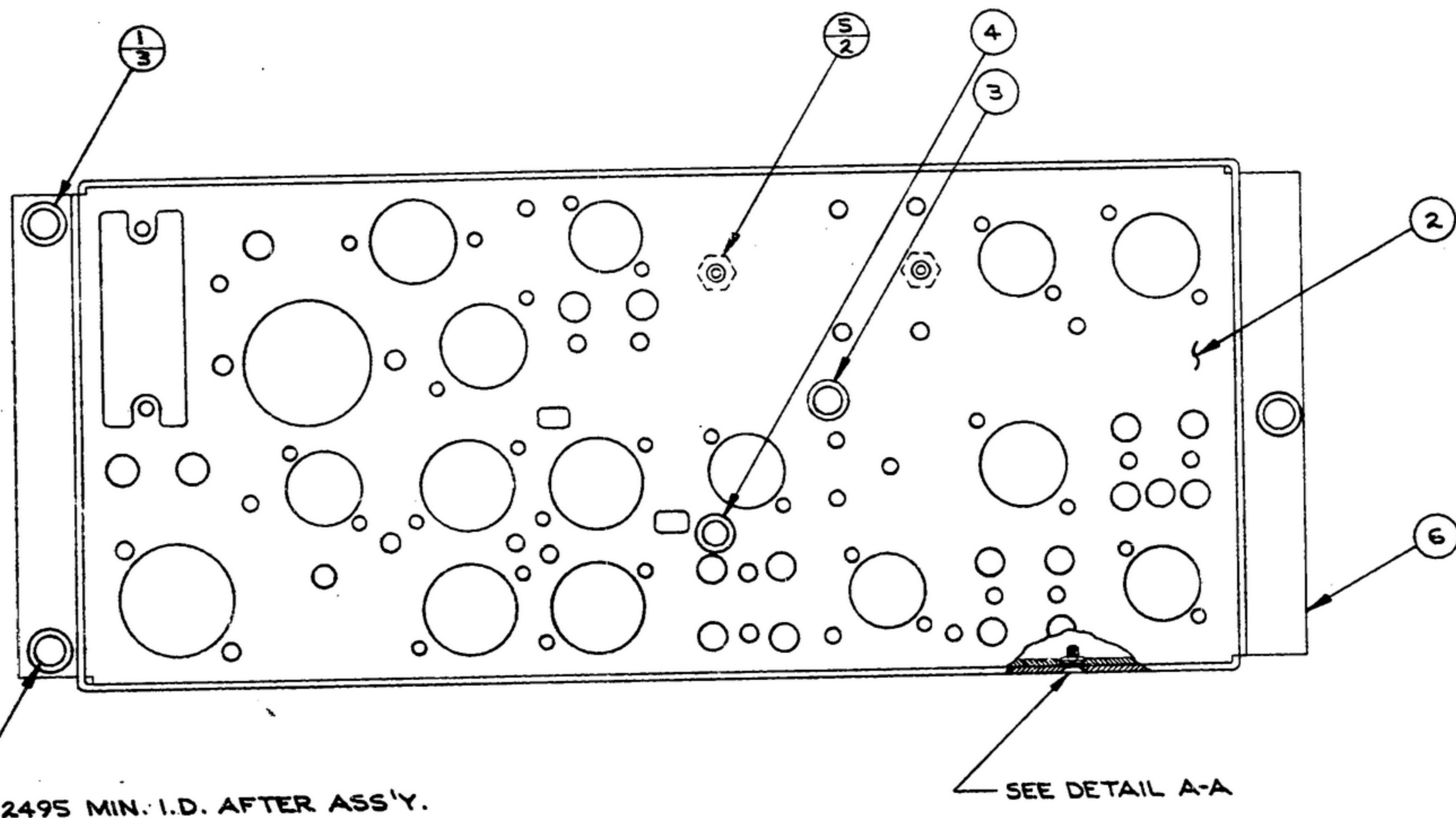


NOTICE - WHEN GOVERNMENT DRAWINGS, SPECIFICATIONS, OR OTHER DATA ARE USED FOR ANY PURPOSE OTHER THAN IN CONNECTION WITH A DEFINITELY RELATED GOVERNMENT PROCUREMENT OPERATION, THE UNITED STATES GOVERNMENT THEREBY INCURS NO RESPONSIBILITY NOR ANY OBLIGATION WHATSOEVER, AND THE FACT THAT THE GOVERNMENT MAY HAVE FORMULATED, FURNISHED, OR IN ANY WAY SUPPLIED THE SAID DRAWINGS, SPECIFICATIONS OR OTHER DATA IS NOT TO BE REGARDED BY IMPLICATION OR OTHERWISE AS IN ANY MANNER LICENSING THE HOLDER OR ANY OTHER PERSON OR CORPORATION, OR CONVEYING ANY RIGHTS OR PERMISSION TO MANUFACTURE, USE, OR SELL ANY PATENTED INVENTION THAT MAY IN ANY WAY BE RELATED THERETO.

"THIS DOCUMENT HAS BEEN PURCHASED BY THE GOVERNMENT AND MAY BE REPRODUCED AND USED IN CONNECTION WITH ANY GOVERNMENT PROCUREMENT OR MAINTENANCE OPERATION."

NOTE:  
DATA MARKED BY AN ASTERISK (\*) ARE FOR INFORMATION ONLY, CONTRACTOR MAY, AT HIS OPTION, DEVIATE FROM THESE DETAILS

REVISIONS			
SYM	DESCRIPTION	DATE	APPROVAL

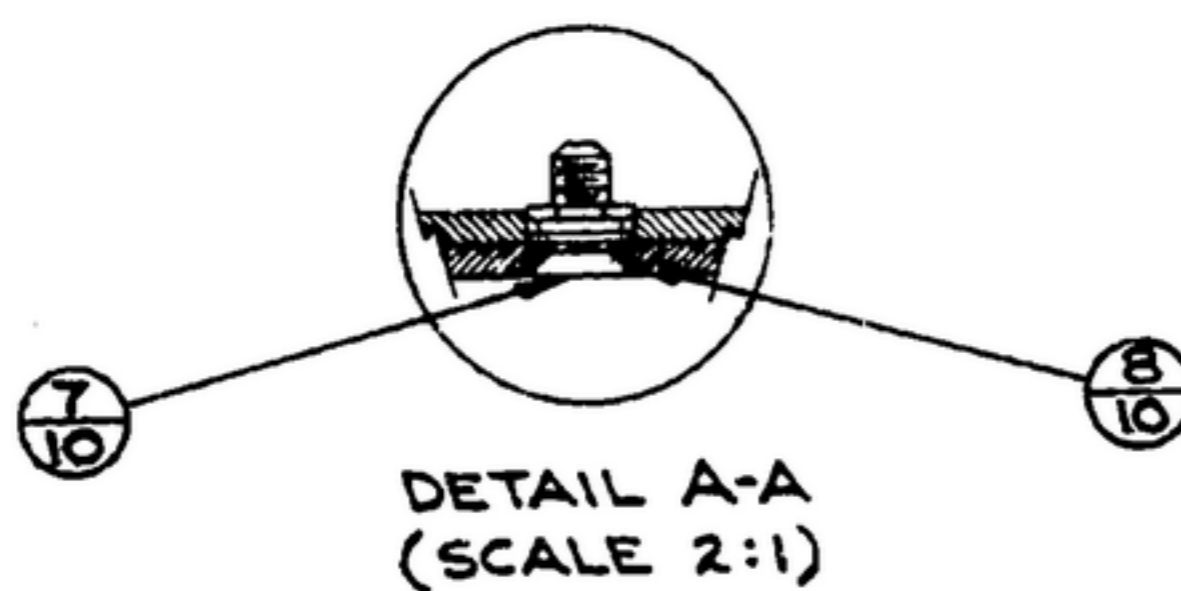


NOTES :

- 1 - PRESS CAPTIVE BUSHINGS (1) INTO CHASSIS (6) FROM SIDE SHOWN.
- 2 - INSERT EYELETS (3 & 4) FROM SIDE SHOWN AND SPIN OR ROLL ON OPPOSITE SIDE. EYELETS MUST SHOW NO FRACTURE AFTER FORMING.
- 3 - IN ALL SPLIT BALLOONS, TOP FIGURE IS MATERIAL LIST ITEM INDICATOR, AND BOTTOM FIGURE IS QUANTITY.
- 4 - SUPPLIED BY SHAKEPROOF DIVISION OF ILLINOIS TOOL WORKS, ELGIN ILL., PT NO. 1504-00 OR EQUAL.

ITEM	REQD	PART NO.	DESCRIPTION	SPECIFICATION	NOTE
8	10	SM-C-505832-1	WASHER, EXT C'SUNK #4		4
7	10	MS24693-C1	SCREW 100° FHM		
6	1	SM-D-505824	CHASSIS -I.F. COVER		
5	2	SM-C-283166-B	NUT-INSERT, CAPTIVE		
4	1	SM-B-283151	EYELET		
3	1	SM-B-283150	EYELET		
2	1	SM-D-505825	CHASSIS -I.F. BASE		
1	3	SM-B-248875	BUSHING -CAPTIVE		

LIST OF MATERIAL



UNLESS OTHERWISE SPECIFIED	
DIMENSIONS ARE IN INCHES	
TOLERANCES ON FRACTIONS	DECIMALS ANGLES
DRAWN P. GAIMO	
CHECKED DMSHAW	
ENG.	APPROVED
APPLICATION	

ELECTRONIC ASSISTANCE CORPORATION  
U-6-00189(E)  
SIGNAL CORPS  
REVIEWED EC-2 (AMB)  
APPROVED EC-2 (AMB)  
DATE 1/26/67

CHASSIS ASSY. - I.F.

DEPARTMENT OF THE ARMY  
U. S. ARMY SIGNAL MATERIEL SUPPORT AGENCY  
FORT MONMOUTH NEW JERSEY  
SM-C-505832  
CODE 80063

WHEN REFERRING TO THIS DRAWING STATE DRAWING NO., APPLICABLE ISSUE SYMBOL, IF ANY, AND DATE.