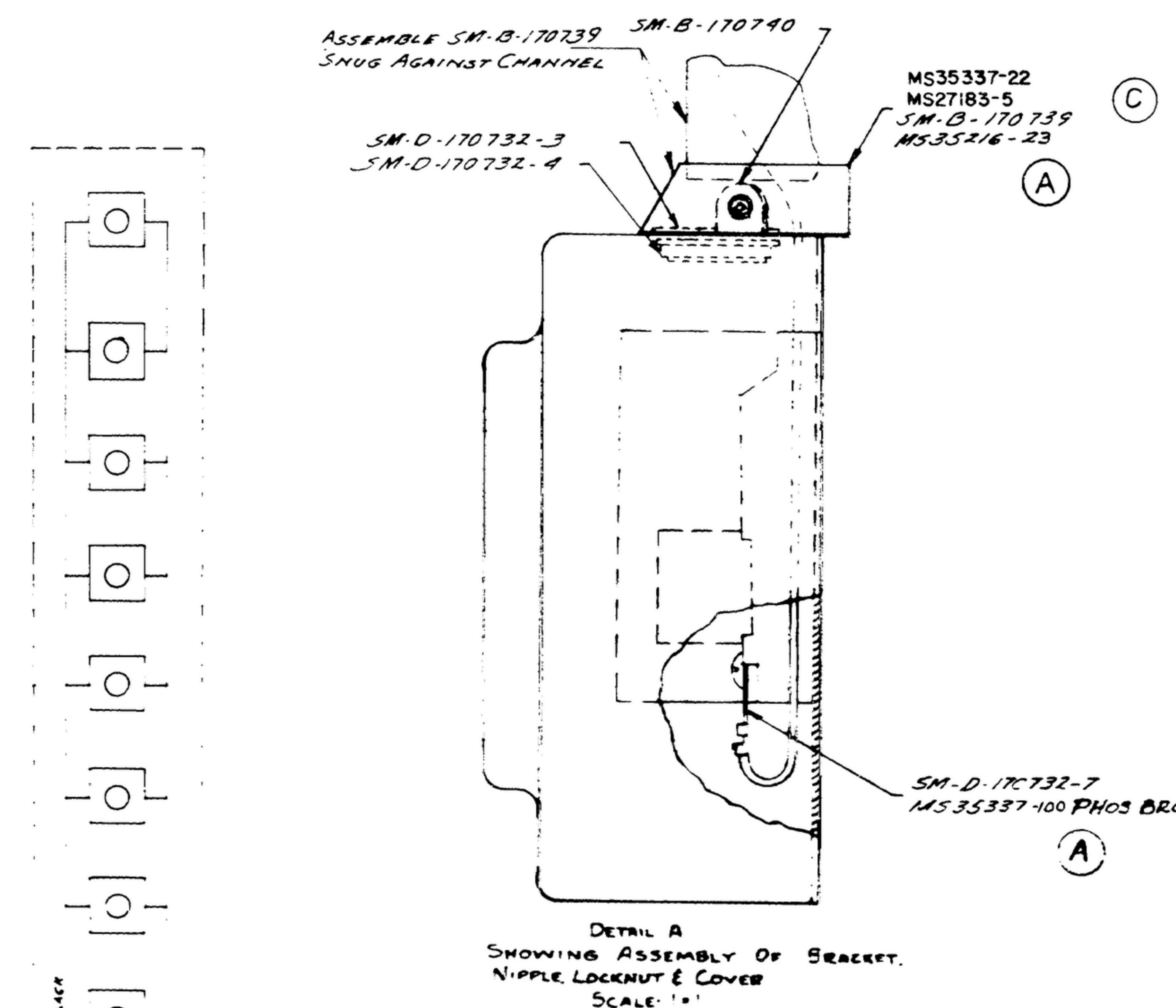


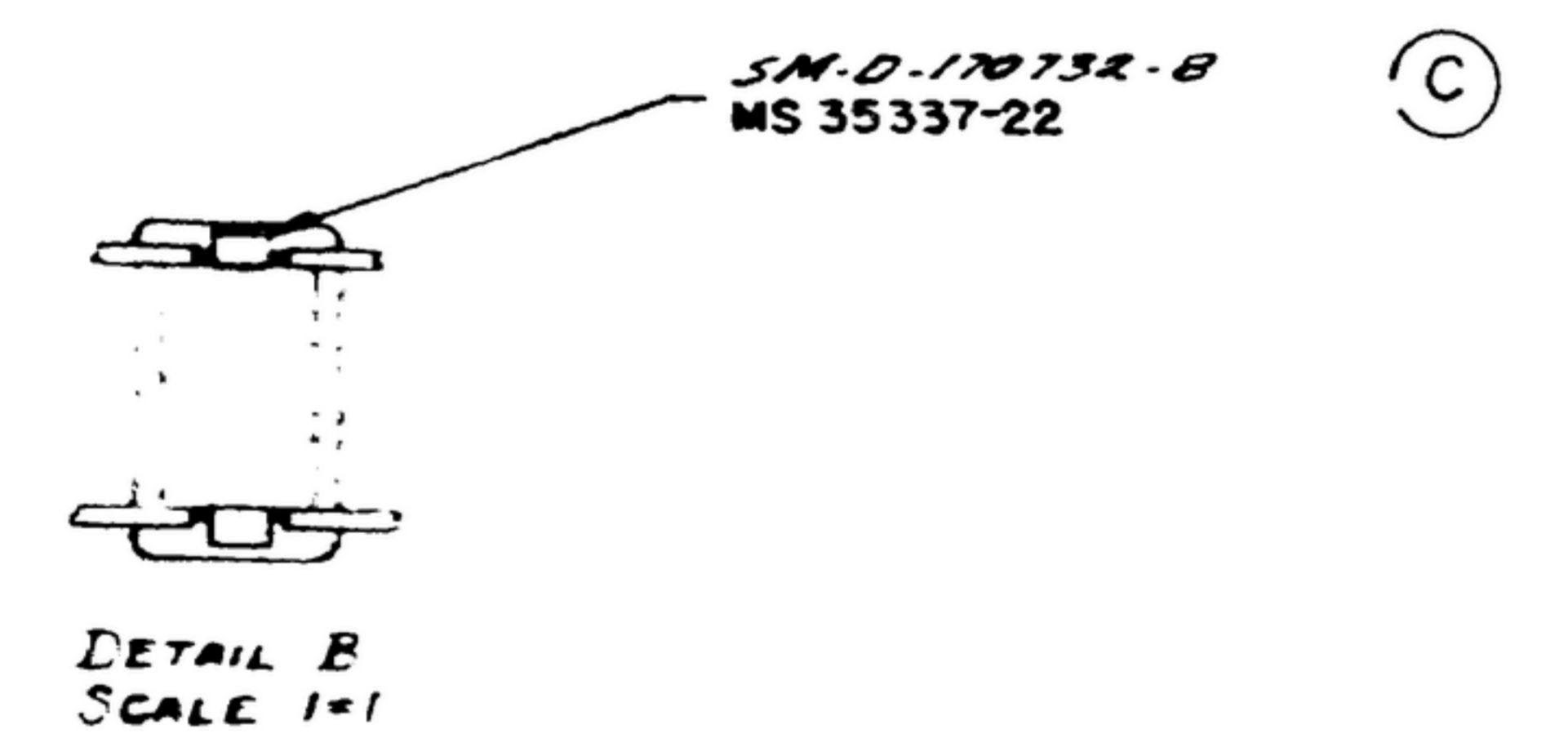
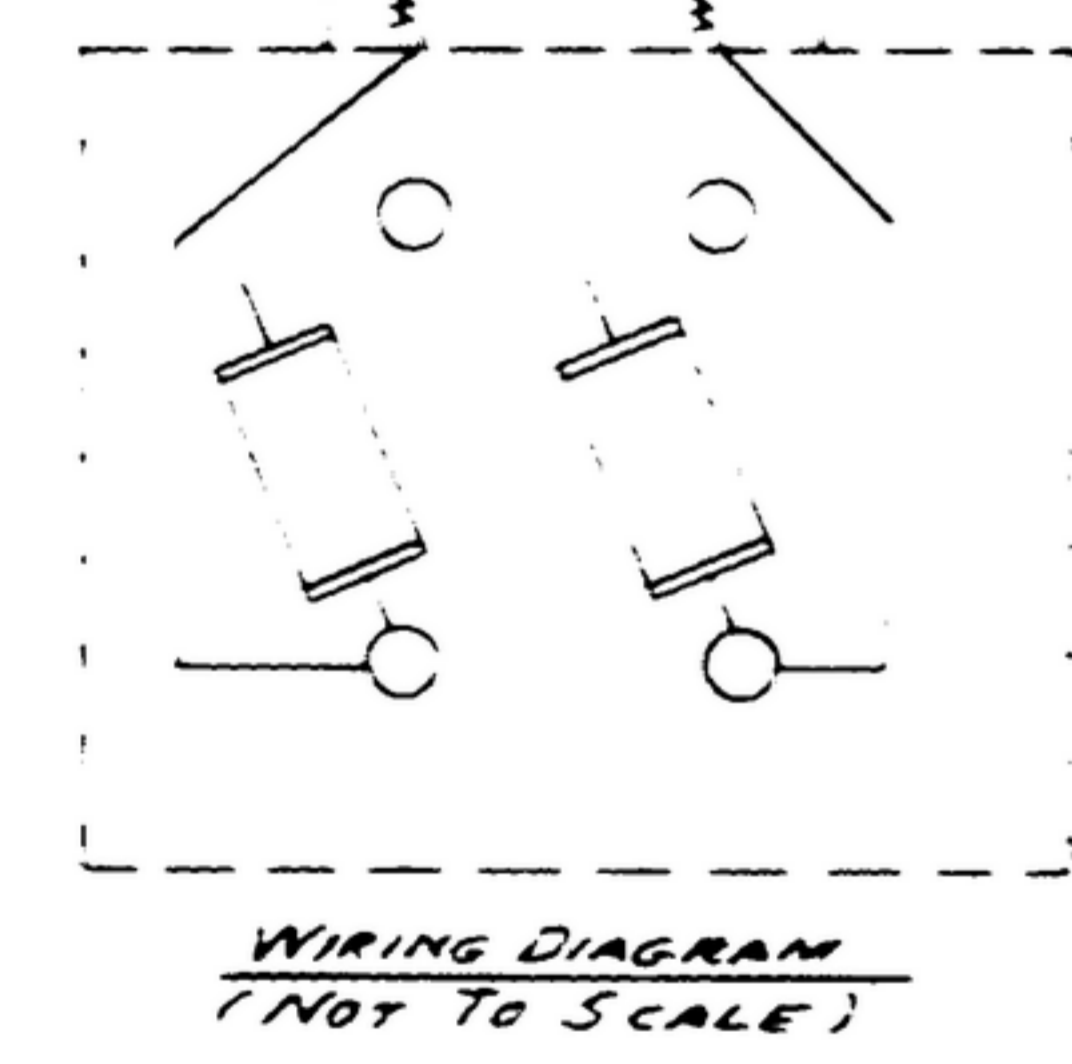
NOTICE: WHEN GOVERNMENT TRAINING SPECIFICATIONS OR OTHER DATA ARE USED FOR ANY PURPOSE OTHER THAN IN CONNECTION WITH A SPECIFICALLY RELATED GOVERNMENT PROCUREMENT OPERATION THE UNITED STATES GOVERNMENT THEREBY INCURS NO RESPONSIBILITY AND ANY RELIANCE THEREON SHALL BE AT THE RISK OF THE BUYER. THE GOVERNMENT MAY HAVE FORWARDED, FURNISHED OR IN ANY WAY MADE AVAILABLE TO YOU TECHNICAL DATA, SPECIFICATIONS, OR OTHER DATA, IF NOT TO BE DEEMED BY OPERATION OF LAW OR OTHERWISE AS AN AUTHORITY FOR THE BUYER OR ANY OTHER PERSON OR ENTITY TO REPRODUCE OR TO TRANSMIT IN ANY MANNER OR BY ANY MEANS OR FOR ANY PURPOSE OR TO USE OR TO PATENT ANY INVENTION THAT MAY IN ANY WAY BE RELATED THEREIN.

REVISIONS			
BYM	DESCRIPTION	DATE	APPROVAL
A	SM-B-126-175 RE REQ'D. WAS 1, MS35337-5 REMOVED, MS35337-5 RE REQ'D. WAS 36, MS35337-5 RE REQ'D. WAS 4, MS35337-5 WAS 10, MS35216-23 WAS 24	8/1/57	435305 PH-57-50 REV'D PME
B	(1) NOTES AND BILL OF MATERIALS REVISED (2) ADDED SC-B-32291 (3) & (4) SEE SHEET 2	7/1/58	SAM WJC REV'D XXX
C	MS STANDARDS WERE 100 SERIES	27 JUN 1963	4279-PAGE1 REV'D PME



- 1-AS SUPPLIED BY SURPRENANT MFG. CO., BOSTON 7, MASS., OR EQUAL.
- 2-AS SUPPLIED BY THOMAS F. BETTS CO. INC., ELIZABETH, N.J., OR EQUAL.
- 3-AS SUPPLIED BY TINNEMAN PRODUCTS INC., CLEVELAND, OHIO, OR EQUAL.
- 4-AS SUPPLIED BY PATTON-MACGUYER CO., PROVIDENCE, R.I., OR EQUAL.
- 5-AS SUPPLIED BY AMERICAN HARDWARE CORP., NEW BRITAIN, CONN., OR EQUAL.
- 6-AS SUPPLIED BY HART MFG. CO., HARTFORD, CONN., OR EQUAL.
- 7-AS SUPPLIED BY ARROW-HART & HEGEMAN, HARTFORD, CONN., OR EQUAL.
- 8-AS SUPPLIED BY NATIONAL LOCK & KEY CO., CHICAGO, ILL., OR EQUAL.
- 9-AS SUPPLIED BY PHOENIX MFG. CO., CHICAGO, ILL., OR EQUAL. (PHILLIPS CROSS RECESSED)
- 10-AS SUPPLIED BY WROUGHT WASHER MFG. CO., MILWAUKEE, WIS., OR EQUAL.
- 11-AS SUPPLIED BY ARMSTRONG CORK CO., LANCASTER, PA., OR EQUAL.
- 12-AS SUPPLIED BY PHOENIX MFG. CO., CHICAGO, ILL., OR EQUAL.
- 13-LIQUID STAKE SCREW THREADS, USING VARNISH # 7526 AS SUPPLIED BY GENERAL ELECTRIC CORP., SCHENECTADY, N.Y., OR EQUAL. DOES NOT APPLY TO SCREWS HOLDING BLANK FRAME OR THE
- 14-ASSEMBLY FABRICATED PARTS & HARDWARE AS SHOWN. SCREWS HOLDING COVERS SM-B-170739 ON
- 15-ASSEMBLY DOOR & HINGES WITH OFFSET SIDE OF HINGE ON DOOR. THE WIRING PORTS
- 16-SM-D-170732-9 TO BE ASSEMBLED & ADJUSTED TO LATCH ON RACK FRAME WITH A MINIMUM OVERLAP ON FRAME PLATE OF 1/8 INCH.
- 17-OUTLETS TO BE WIRED WITH A SUFFICIENT LEAD TO ALLOW REPLACEMENT.
- 18-SM-D-170732-15 TO BE USED FOR REMOVAL OF PAINT FROM PANEL MOUNTING HOLES AS REQUIRED.
- 19-THE FOLLOWING ITEMS: SM-D-170732-17, SM-D-170732-16, SM-D-170732-19, & SM-B-126-955 ARE NOT SHOWN ON THE ASSY DRAWING, BUT SHALL BE FURNISHED WITH EACH ASSY TO FORM A COMPLETE CY-1119/U
- 20-THE FOLLOWING ITEMS: SM-D-170732-5, SM-D-170732-6, MS90087, SC-B-32291, SM-B-170739, 109-15-416L, MS35337-1, MS35337-3, MS35338-25, MS35338-1, SM-D-170732-18, MS35216-2, MS35216-3, MS35216-25, MS35217-53, MS35335-2, SM-B-170965, & SM-B-170966 ARE NOT SHOWN ON THE ASSEMBLY DRAWING, BUT ARE FURNISHED AS THE INSTALLATION KIT WITH EACH FR-103 ASSY
- 21-INCLUDES RUNNING SPARES
- 22-ALL THREADS TO BE IN ACCORDANCE WITH SCREW THREAD STDS. FOR FED SERVICES HANDBOOK H-28.

QTY	DESCRIPTION	MATL	MATL SPEC	NOTES
4	MS35337-100			
12	MS35338-77			
26	MS35337-5			
9	MS35337-3			
6	MS35335-4			
6	MS35335-2 WASHER			
26	MS35209-6			
6	MS35217-53			
10	MS35217-52			
14	MS35218-42			
4	MS35216-41			
16	MS35216-40			
9	MS35216-25			
2	MS35216-23			
4	MS35216-3			
8	MS35216-2			
24	MS35201-54 SCREW			
18	MS35337-22			
24	MS-27183-10			
2	MS-27183-5 WASHER			
24	MS35650-102			
34	MS-35649-82 NUT			
26	-18 NUT, 1/2" DIA. 30NC-28	STEEL		17
66	-17 TYPE DC-100 5/16" DIA. 1/2" DIA. 1/8" THK			11
66	-16 WASHER, #12 15 1/8" DIA. 3/16" THK			10
1	-15 1/2" DIA. 30NC-28 1/2" DIA. 3/16" THK	NON STEEL		
66	-14 1/2" DIA. 30NC-28 1/2" DIA. 3/16" THK	STEEL		
6	-13 SCREW, #12 15 1/8" DIA. 3/16" THK	STEEL		9
1	-11 SWITCH, #27052			7
8	-10 OUTLET, #1626F(LT)			6
2	-9 LATCH, #156310			5
16	-8 LUG, #3030			4
2	-7 LUG, #2041-10			4
4	-6 CLAMP, A3049A-9-92			3
4	-5 CLAMP, A3049A-1-92			3
1	-4 NUT, #992			2
1	-3 FITTING, #191			2
2	-2 WIRE, R-1927N-A10 WHT			1
2	SM-D-170732-1 WIRE, R-1927N-A10 WHT			1



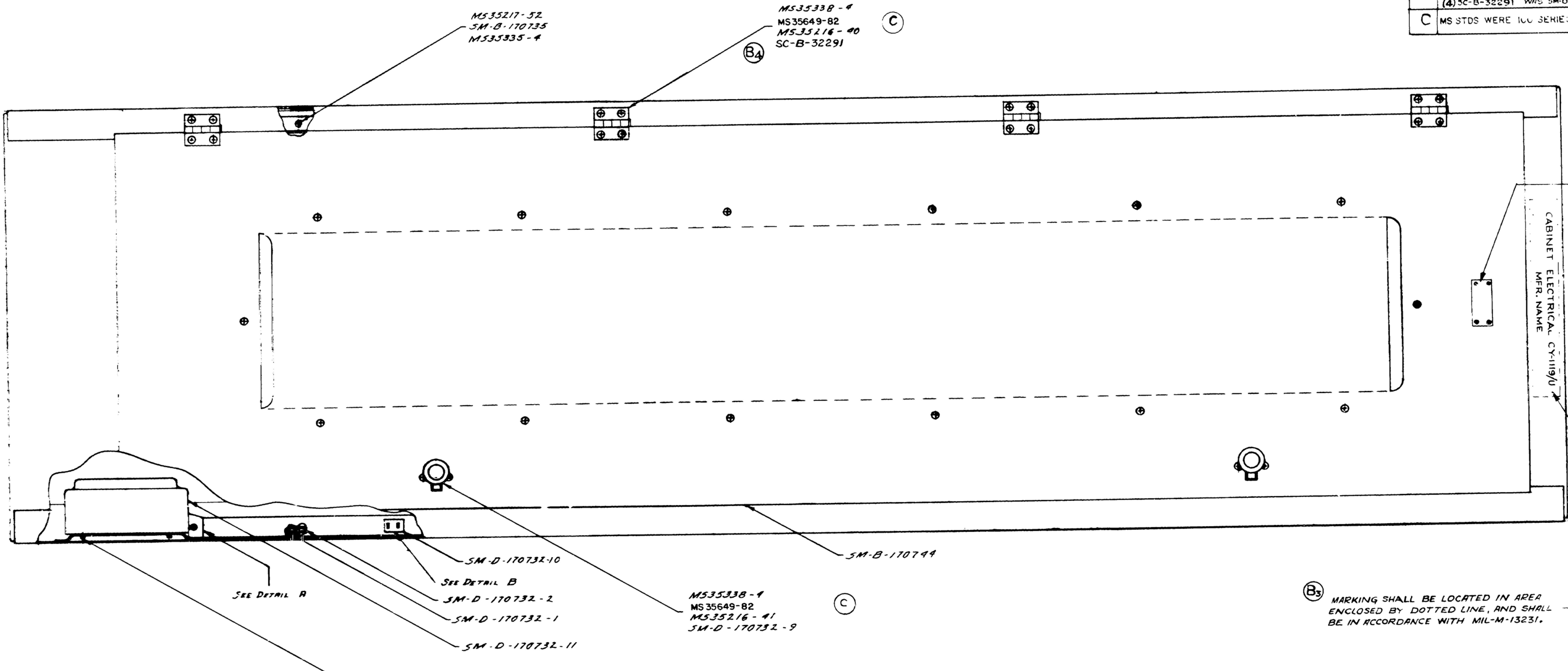
REQD	PART NO.	DESCRIPTION	MATL	MATL SPEC	NOTES
4	SC-B-32291	HINGE			
1	SC-D-17269-1	CAUTION PLATE			
4	MS90087	FUSE, F10DISROA			21
26	MS35338-25				
90	MS35338-4	WASHER			

LIST OF MATERIAL		LIST OF MATERIAL	
UNLESS OTHERWISE SPECIFIED DIMENSIONS ARE IN INCHES TOLERANCES ON FRACTIONS DECIMALS ANGLES	AUTHENTICATION DRAWN 3/8/52 - PMH TRACED PMH CHECKED PMH VERIFIED POBR APPROVED POBR REVIEWED PDE DATE 11-OCT-59	CABINET ELECTRICAL EQUIPMENT CY-1119/U ASSY	
SC-D-170731	NEXT ASSY USED ON	SIGNAL CORPS ENGINEERING LABORATORIES PORT MONMOUTH NEW JERSEY	
APPLICATION	SCALE 3/16	SM-D-170732 SHEET 1 OF 3	



NOTICE: WHEN GOVERNMENT DRAWINGS, SPECIFICATIONS, OR OTHER DATA ARE USED FOR ANY PURPOSE OTHER THAN IN CONNECTION WITH A DEFINITELY RELATED SERVICE, THE USER TAKES RESPONSIBILITY FOR ANY AND ALL CLAIMS AND THE FACT THAT THE GOVERNMENT HAS FORMULATED, PROVIDED, OR IN ANY WAY SUPPORTED THE SAID DRAWINGS, SPECIFICATIONS, OR OTHER DATA IS NOT TO BE DEEMED AN ENDORSEMENT OR APPROVAL OF ANY INVENTION OR CLAIM MADE BY ANY OTHER PERSON OR CORPORATION, OR CONSTITUTE ANY RIGHTS OR PERMISSION TO REPRODUCE, COPY, USE, OR SELL ANY PATENTED INVENTION THAT MAY IN ANY WAY BE RELATED THEREBY.

SYM	DESCRIPTION	DATE	APPROVAL
A	ADDED MS 35338-1, MS35216-3, SC-D-17269-1, MS 35338-1	8/9/58	43838- PH-57-05 REV D PML
B	(3) DELETED - SM-B-170733, MS35216-2 (4) MS 35338-17, - ADDED MARKING (4) SC-B-32291 WAS SM-D-170732-12	7/1/58	REV D XXX
C	MS STDS WERE 100 SERIES	27 JUN 1953	4299-PP-61 REV D PME



REAR VIEW

(B3) MARKING SHALL BE LOCATED IN AREA ENCLOSED BY DOTTED LINE, AND SHALL BE IN ACCORDANCE WITH MIL-M-13231.

ITEM NO.	DESCRIPTION	QTY	UNIT	REMARKS
LIST OF MATERIAL				
CABINET ELECTRICAL EQUIPMENT CY-1119/U ASSY				
SIGNAL CORPS ENGINEERING LABORATORIES FORT MONMOUTH NEW JERSEY				
MS-D-170732 SHEET 2				

UNLESS OTHERWISE SPECIFIED	AUTHENTICATION
DIMENSIONS ARE IN INCHES	DRAWN <i>PH-57-05</i>
TOLERANCES ON FRACTIONS DECIMALS ANGLES	TRACED <i>PHOTO</i>
	CHECKED <i>PHM</i>
	VERIFIED <i>PO BR</i>
	APPROVED <i>PO BR</i>
	REVIEWED <i>PME</i>
	DATE <i>12-OCT-54</i>
SCALE <i>3/8</i>	

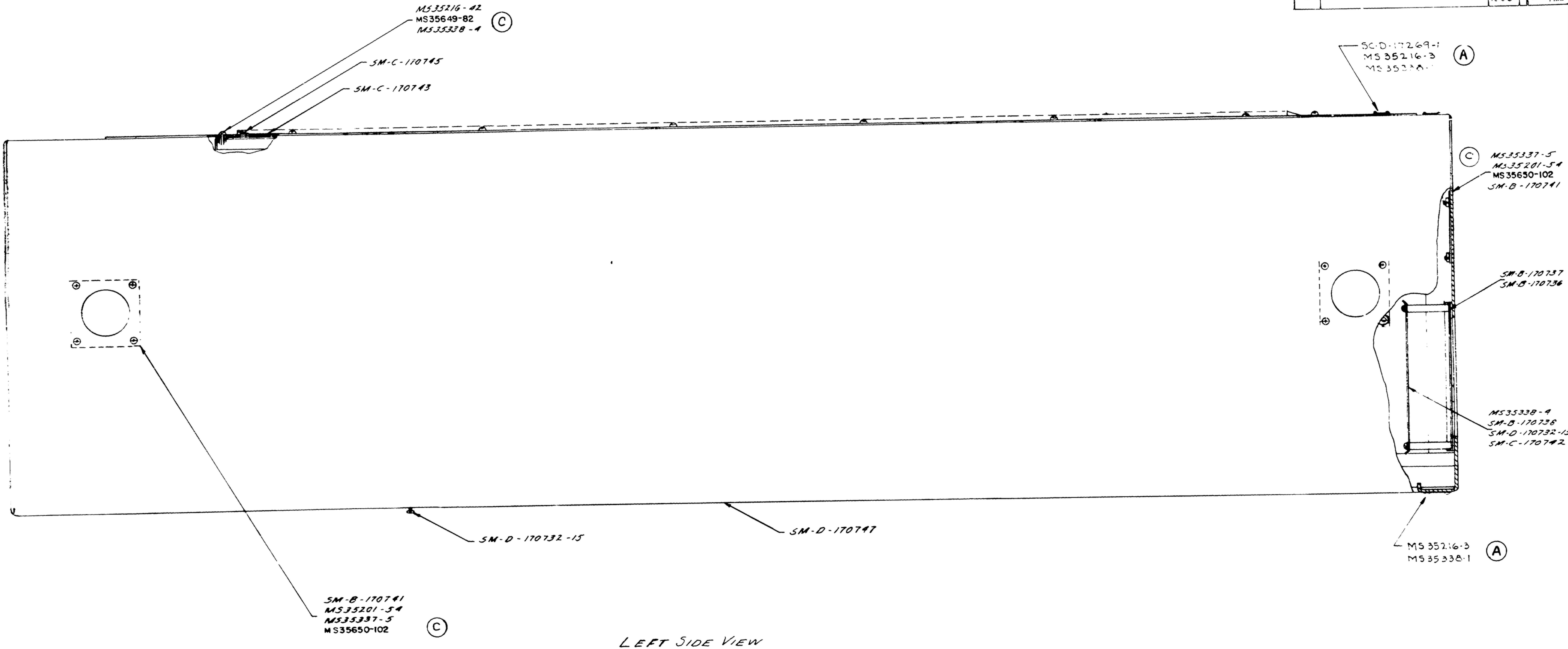
  

SC-D-170731	APPLICATION
NEXT ARMY USED ON	



NOTICE: WHEN GOVERNMENT SPECIFICATIONS OR OTHER DATA ARE USED FOR ANY PURPOSE OTHER THAN IN CONNECTION WITH A DEFENSE RELATED MATTER, THE USER SHALL BE RESPONSIBLE FOR OBTAINING THE LATEST EDITIONS THEREOF. THE GOVERNMENT ASSUMES NO LIABILITY FOR ANY DELAY OR INADEQUACY OF INFORMATION OR FOR THE USER'S NEGLIGENCE IN OBTAINING THE LATEST EDITIONS THEREOF. THE USER SHALL BE RESPONSIBLE FOR OBTAINING THE LATEST EDITIONS THEREOF. THE GOVERNMENT ASSUMES NO LIABILITY FOR ANY DELAY OR INADEQUACY OF INFORMATION OR FOR THE USER'S NEGLIGENCE IN OBTAINING THE LATEST EDITIONS THEREOF.

REVISIONS			
SYM	DESCRIPTION	DATE	APPROVAL
A	ADDED MS 35216-3, MS 35338-1 & SC-D-17269-1	8-9-57	43838 PH-57-58 RKP
B <sub>a</sub>		7/1/58	2701N 1963 4299-PP-61 RKP
C	MS STDS WERE 100 SERIES	1963	4299-PP-61 RKP



ITEM NO.	DESCRIPTION	QTY	UNIT	DATE SPEC
LIST OF MATERIAL				

UNLESS OTHERWISE SPECIFIED		AUTHENTICATION		<b>CABINET ELECTRICAL EQUIPMENT CY-1119/U ASSY</b>	SIGNAL CORPS ENGINEERING LABORATORIES PORT MONMOUTH NEW JERSEY  <b>SM-D-170732 SHEET 3</b>
DIMENSIONS ARE IN INCHES		DRAWN <i>STB</i>			
TOLERANCES ON		TRACED <i>Photo</i>			
FRACTIONS	DECIMALS	ANGLES	CHECKED <i>RKP</i>		
			VERIFIED <i>PDR</i>		
			APPROVED <i>PDR</i>		
NEXT ASSY USED ON		REVIEWED <i>PDR</i>		DATE <i>12-Oct-57</i>	
APPLICATION		SCALE <i>3/8</i>			

WHEN REFERRING TO THIS DRAWING STATE DRAWING NO., APPLICABLE ISSUE SYMBOL, IF ANY, AND DATE